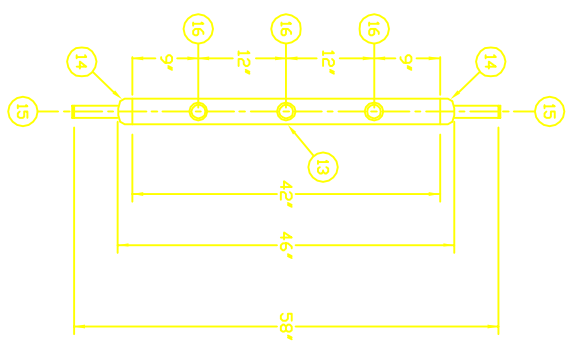
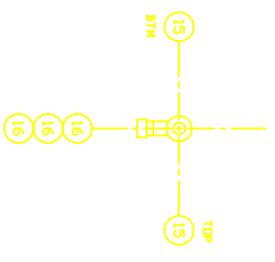
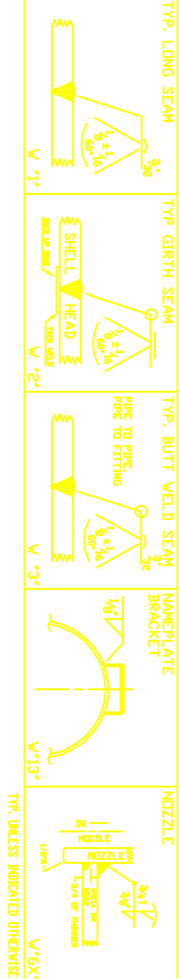
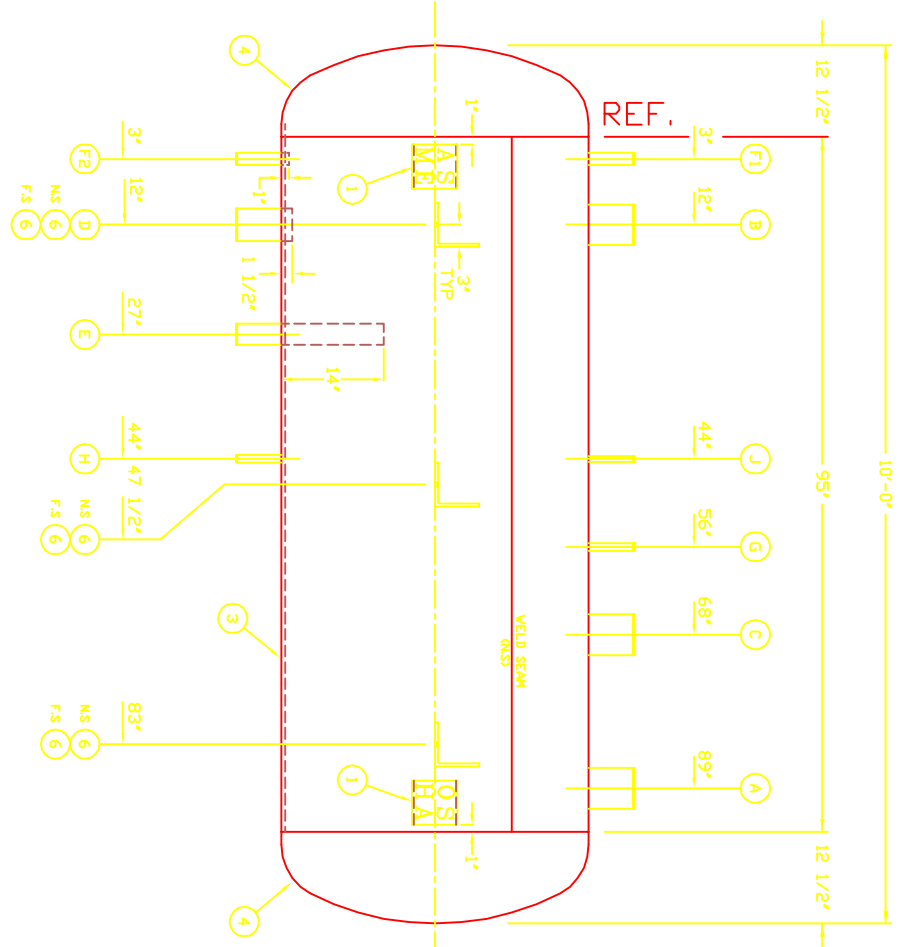
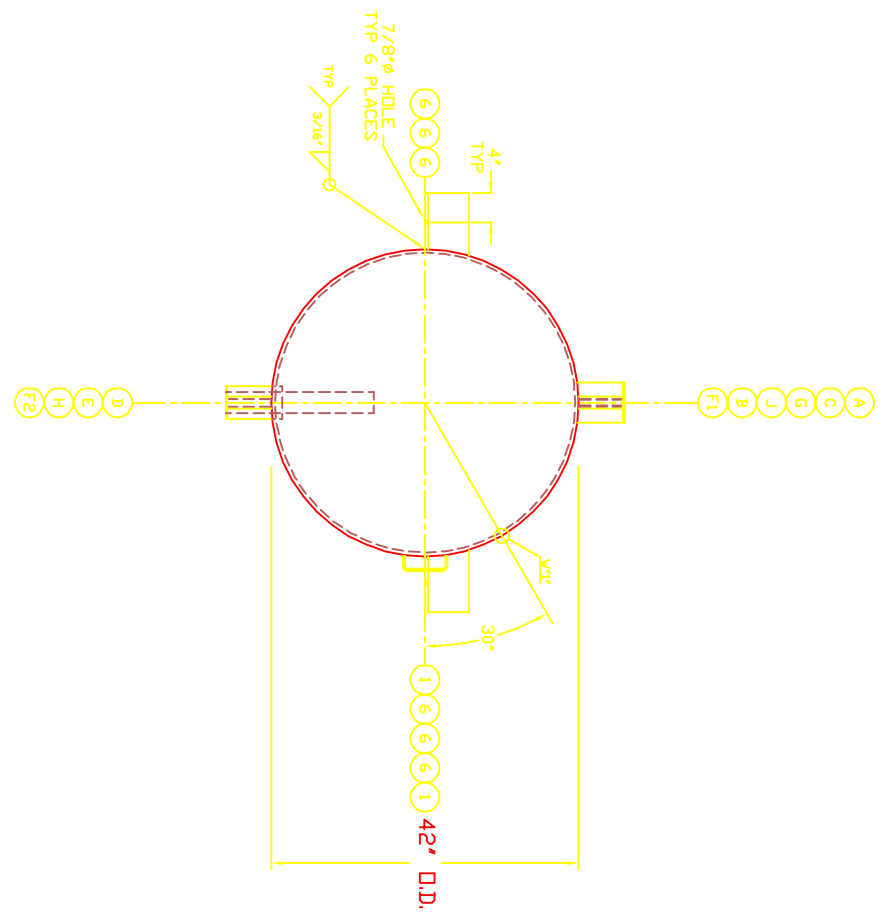


- GENERAL NOTES**
- 1) ALL PIPE NOZZLES EXTEND 6" OUTSIDE SHELL UNLESS INDICATED OTHERWISE.
 - 2) ALL WELDS: WPS 109, 1002, 1006, 2002, AND 4004 APPLY UNLESS INDICATED OTHERWISE.
 - 3) SA306-70 MAY BE SUBSTITUTED FOR SA306.
 - 4) SA306B PIPE MAY BE SUBSTITUTED FOR SA306B SEAMLESS AND VICE VERSA.
 - 5) ALL BOLT HOLES STRIKEOUT CENTRELINE.
 - 6) ALL PIPE NOZZLES EXTEND 1/2" INSIDE SHELL UNLESS INDICATED OTHERWISE.



#3 LEVEL COLUMN



DIE STAMP ON REVERSE OF STD DATA PLATE

CAL. OSHA
 NB THRO 1/2"
 SM THRO 1/2"
 US GAL. 6.78
 SS. FT. SURF. ACE. 117

TEST WITH ASME DATA PLATE

PRECISION
 NATIONAL BOND NO. _____
 CERTIFIED BY _____
 REFER TO VALVES & SYSTEMS CORPORATION BREVIA, TEXAS

RT-3 HAVP 250 PSI AT 300 °F
 HMT -20 °F AT 250 PSI

S/N 94806 YEAR 1994
 V-6

NOZZLE SCHEDULE

ITEM	QTY	SIZE	TYPE	RATING	MATERIAL	SERVICE	LENGTH	ITEM	QTY	SIZE	TYPE	RATING	MATERIAL	LENGTH
R								16	3	LI-2				7'
Q								15	2	1 1/4"	PIPE	S/80	SA106B	7'
P								14	2	3"	PIPE CAP	S/40	SA106B-VPB	42"
N								13	1	3"	PIPE	S/40	SA106B	42"
M								12						
L								11						
K								10						
J	1	1/2"	PIPE	S/80	SA106B	WATER	7'	9						
I	1	3/4"	PIPE	S/80	SA106B	WATER	7'	8						
H	1	1 1/4"	PIPE	S/80	SA106B	WATER	7'	7						
G	1	1 1/4"	PIPE	S/80	SA106B	WATER	7'	6		6" X 6"	ANGLE	S/80	SA36	8"
F	1	1 1/4"	PIPE	S/80	SA106B	WATER	7'	5						
E	1	2 1/2"	PIPE	S/40	SA106B	HIGH PRESSURE LIQUID	24"	4		42"	BL. ELIP. HEADS	S/40	SA306-70	95"
D	1	2 1/2"	PIPE	S/40	SA106B	HIGH PRESSURE LIQUID	7'	3		42"	NOZZLE SHELL	S/40	SA306-70	95"
C	1	5"	PIPE	S/40	SA106B	HIGH PRESSURE LIQUID	7'	2		1 1/2"	STD. STRAP	S/40	SA36	182"
B	1	5"	PIPE	S/40	SA106B	VENT	7'	1		2"	STD. DATA BRACKET	S/40	SA36	182"
A	1	5"	PIPE	S/40	SA106B	VENT	7'	1		2"	STD. DATA BRACKET	S/40	SA36	182"

BILL OF MATERIALS

SHELL, HEADS, INTERNALS, SUPPORTS

ITEM	QTY	SIZE	TYPE	RATING	MATERIAL	LENGTH
16	3	LI-2				7'
15	2	1 1/4"	PIPE	S/80	SA106B	7'
14	2	3"	PIPE CAP	S/40	SA106B-VPB	42"
13	1	3"	PIPE	S/40	SA106B	42"
12						
11						
10						
9						
8						
7						
6		6" X 6"	ANGLE	S/80	SA36	8"
5						
4		42"	BL. ELIP. HEADS	S/40	SA306-70	95"
3		42"	NOZZLE SHELL	S/40	SA306-70	95"
2		1 1/2"	STD. STRAP	S/40	SA36	182"
1		2"	STD. DATA BRACKET	S/40	SA36	182"

VESSEL DESIGN SPECIFICATIONS

DESIGN & CONSTRUCTION IN ACCORDANCE WITH SECTION VIII DIV. 1 ASME CODE FOR PRESSURE VESSELS

SHELL SA306-70 10'-0" DIA. 10'-0" HORIZ. 250# ASME
 HEADS SA306-70 10'-0" DIA. 10'-0" HORIZ. 250# ASME
 MAWP HAVP 250 PSI AT 300 °F
 HYDROTEST 375 PSI
 TITLE 42" O.D. X 10'-0" HORIZ. 250# ASME THERMOSYPHON RECEIVER (V-6)
 DRAWN BY MM
 CHECKED BY MM
 DATE 12-2-94
 SCALE 1"=1'-0"
 SERIAL NO. 94806
 TO SHOP
 DRAWING NO. REV. 1
RYS and Systems Corp.
 BREVIA, TEXAS 77806
L0403-6

CUSTOMER TRI-COM REFRIGERATION

P.D. NO. 24024