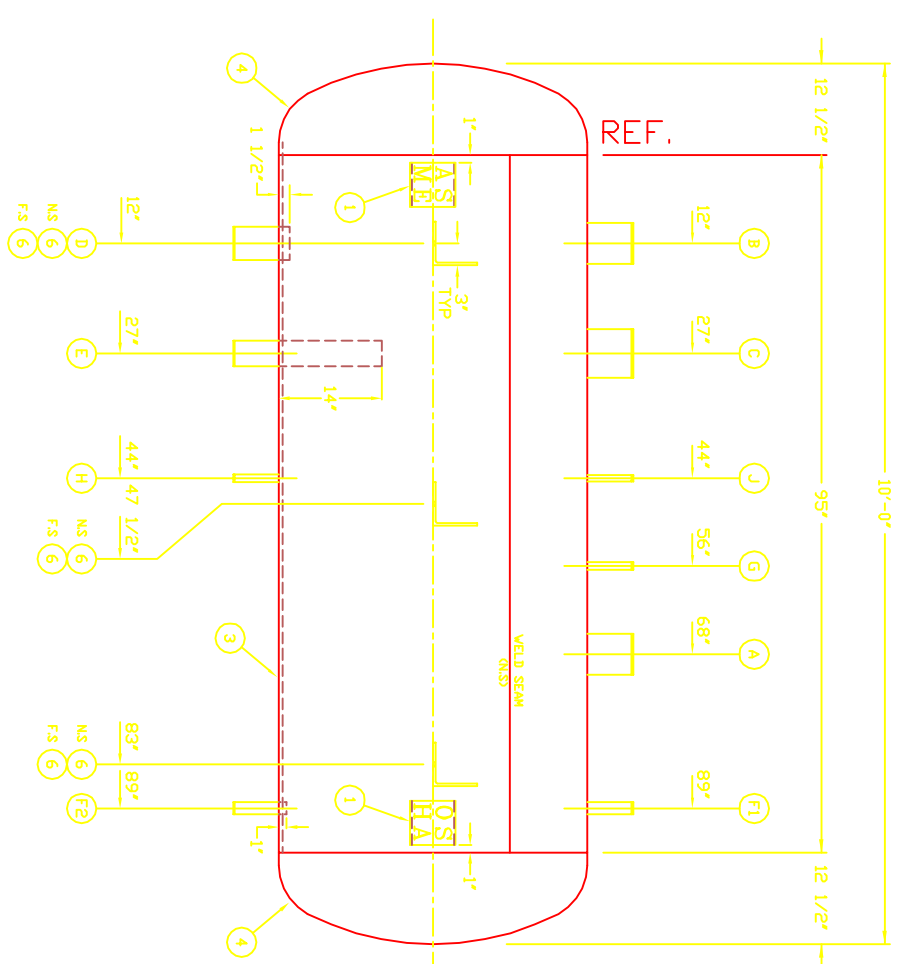
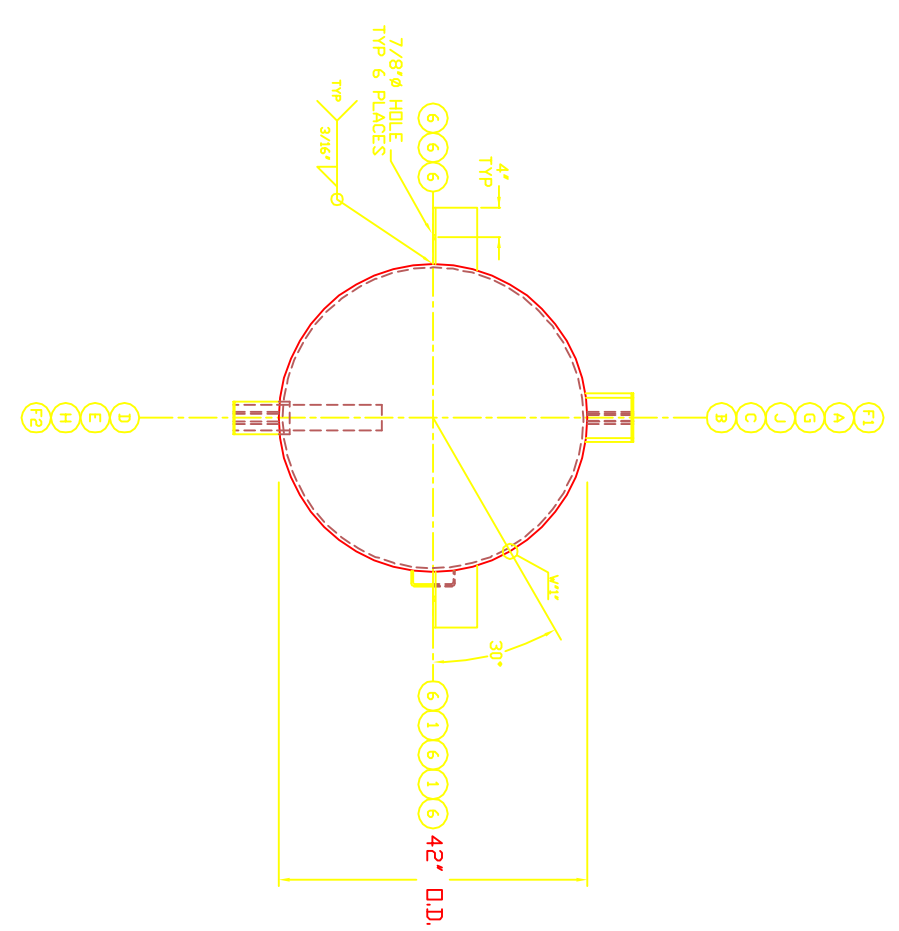
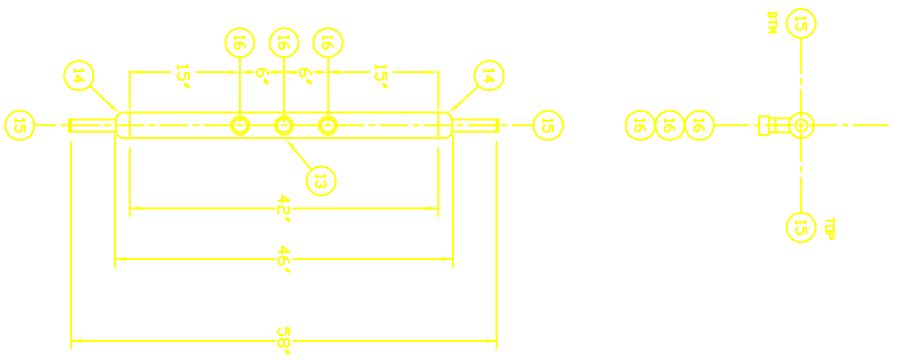
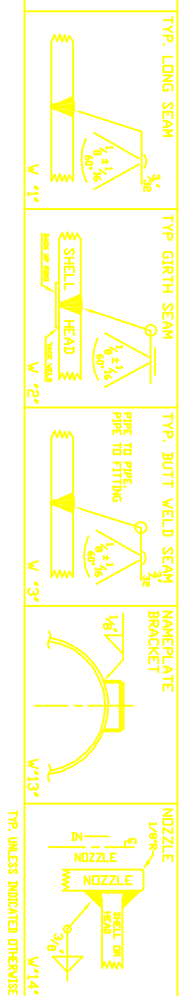


GENERAL NOTES

- 1) ALL PRE NOZZLES EXCEED 6" OUTSIDE SHELL UNLESS INDICATED OTHERWISE.
- 2) ALL WELDS WPS 100, 1002, 1005, 2002, AND 4004 APPLY UNLESS INDICATED OTHERWISE.
- 3) SA316-70 MAY BE SUBSTITUTED FOR SA306.
- 4) SA316 PIPE MAY BE SUBSTITUTED FOR SA306 SEAMLESS AND VICE VERSA.
- 5) ALL ROOT HOLS STRUOE GOVERN.
- 6) ALL PRE NOZZLES EXCEED 1/2" INSIDE SHELL UNLESS INDICATED OTHERWISE.



DIE STAMP DN REVERSE
DF STD DATA PLATE

CAL. OSHA

HD THD 1/2"
SH THD 1/2"
L.S. GAL. 678
S.S. FT. SURFACE 117

TEST WITH OIL ASME DATA PLATE

Manufacturer: ASME Systems Corp.	Specification: ASME B31.1
Welding Process: Shielded Metal Arc	Welding Position: 6G
Welding Electrode: E6010	Welding Current: 250
Welding Voltage: 30	Welding Speed: 250
Welding Time: 1994	Welding Location: V-3

BILL OF MATERIALS

ITEM	QTY	SIZE	TYP.	RATING	MATERIAL	SERVICE	LENGTH	ITEM	QTY	SIZE	TYP.	RATING	MATERIAL	LENGTH
1	2	2"	PIPE	S/40	SA316-70	VENT	7'	1	2	2"	PIPE	S/40	SA316-70	7'
2	2	1 1/2"	PIPE	S/40	SA316-70	VENT	7'	2	2	1 1/2"	PIPE	S/40	SA316-70	7'
3	2	1 1/2"	PIPE	S/40	SA316-70	VENT	7'	3	2	1 1/2"	PIPE	S/40	SA316-70	7'
4	2	1 1/2"	PIPE	S/40	SA316-70	VENT	7'	4	2	1 1/2"	PIPE	S/40	SA316-70	7'
5	6	6" X 6"	FLANGE	S/80	SA316	VENT	8"	5	6	6" X 6"	FLANGE	S/80	SA316	8"
6	6	6" X 6"	FLANGE	S/80	SA316	VENT	8"	6	6	6" X 6"	FLANGE	S/80	SA316	8"
7	6	6" X 6"	FLANGE	S/80	SA316	VENT	8"	7	6	6" X 6"	FLANGE	S/80	SA316	8"
8	6	6" X 6"	FLANGE	S/80	SA316	VENT	8"	8	6	6" X 6"	FLANGE	S/80	SA316	8"
9	6	6" X 6"	FLANGE	S/80	SA316	VENT	8"	9	6	6" X 6"	FLANGE	S/80	SA316	8"
10	6	6" X 6"	FLANGE	S/80	SA316	VENT	8"	10	6	6" X 6"	FLANGE	S/80	SA316	8"
11	6	6" X 6"	FLANGE	S/80	SA316	VENT	8"	11	6	6" X 6"	FLANGE	S/80	SA316	8"
12	1	3"	PIPE	S/40	SA316-70	VENT	42"	12	1	3"	PIPE	S/40	SA316-70	42"
13	1	3"	PIPE	S/40	SA316-70	VENT	42"	13	1	3"	PIPE	S/40	SA316-70	42"
14	2	3"	PIPE	S/40	SA316-70	VENT	42"	14	2	3"	PIPE	S/40	SA316-70	42"
15	2	1 1/4"	PIPE	S/80	SA316-70	VENT	7'	15	2	1 1/4"	PIPE	S/80	SA316-70	7'
16	3	1 1/4"	PIPE	S/80	SA316-70	VENT	7'	16	3	1 1/4"	PIPE	S/80	SA316-70	7'

VESSEL DESIGN SPECIFICATIONS

DESIGN & CONSTRUCTION IN ACCORDANCE WITH SECTION VIII DIV. 1 ASME CODE FOR PRESSURE VESSELS	EDITION & ADDENDA TO 1989
DESIGNER: ASME	CERTIFIED BY: ASME
DATE: 11-10-94	BY: MM
REVISIONS:	DESCRIPTION:
1	REVISED PER CUSTOMER
2	REVISED CLIPS PER CUSTOMER
3	RELEASED DATA PLATES
4	
5	
6	
DRAWN BY: MM	SERIAL NO: 94801
CHECKED BY: MM	TO SHIP
TITLE: 42' O.D. X 10'-0" HORIZ. 250# ASME THERMOSYPHON RECEIVER (V-3)	SCALE: 1"=1'-0"
DATE: 9-21-94	DRAWING NO: REV.2
Refrigeration Valves and ASME Systems Corp. 15520 CROSSROAD DRIVE, DRYDEN, TEXAS 77808	

CUSTOMER: **TRI-COM REFRIGERATION**
P. I. D. NO: **24024**

ASME
Refrigeration Valves and ASME Systems Corp.
 15520 CROSSROAD DRIVE, DRYDEN, TEXAS 77808
 DRAWING NO. REV.2
L0403-3