

GENERAL INFORMATION:

MTCS-16-13, SCREW CONVEYOR

DIAMETER: 16"

CONVEYOR LENGTH: 13'

CONSTRUCTION: TYPE 304 STAINLESS STEEL WITH GLASS BEADED FINISH

WELDING: CONTINUOUS

STAND: TYPE 304 STAINLESS STEEL

COVER: TWO HINGED AND ONE LIFT OFF SOLID MANUAL WITH SAFETY INTERLOCK

DRIVE BEARING: STEEL-IT COATED

DISCHARGE BEARING: DELRIN

PRIMARY VOLTAGE: 230/460V-60HZ-3PH (NO STARTERS)

DRIVE: 5HP TEFC GEARMOTOR WITH CHAIN AND SPROCKET, AND STAINLESS STEEL CHAIN GUARD

SPEED: 70 RPM

HOPPER: 1700 POUND CAPACITY BASED ON 55 POUNDS PER CUBIC FOOT

UNIT TO BE MOUNTED ON PLATFORM BY CUSTOMER

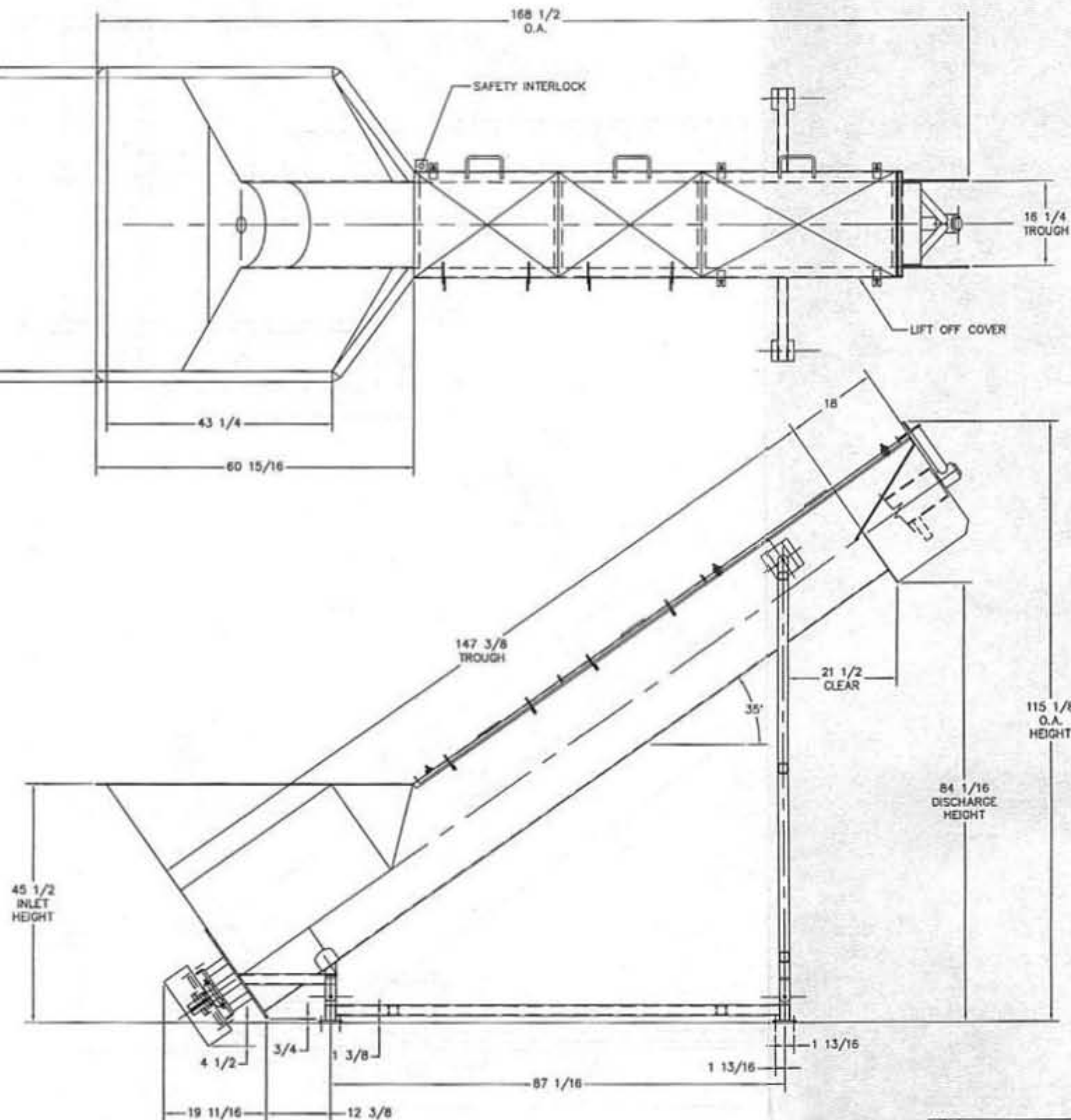
INLET: 45-1/2" FROM PLATFORM TO INLET

DISCHARGE: 84-1/16" FROM PLATFORM TO DISCHARGE

UNIT WEIGHT: 1500 LBS



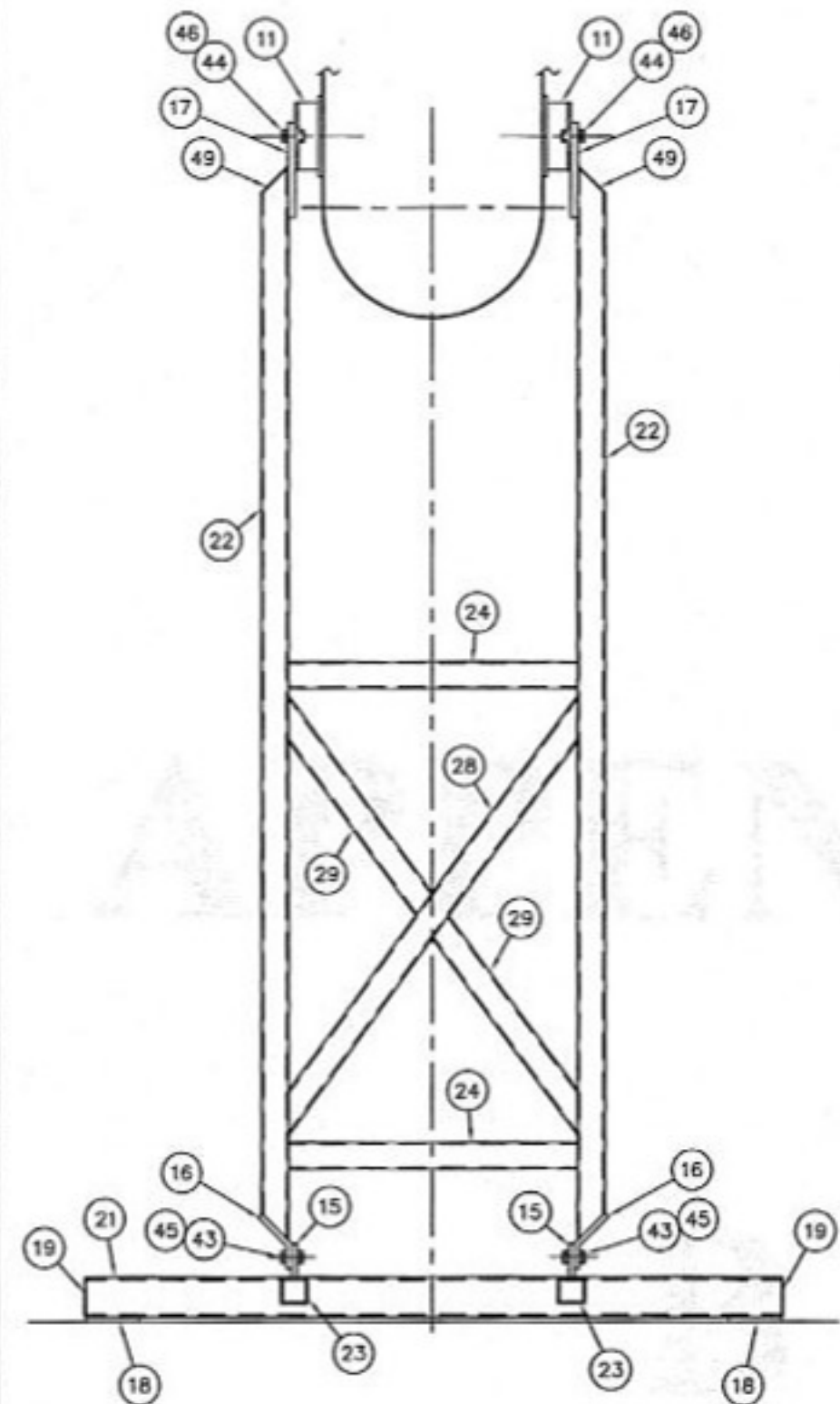
This Drawing is the property of
MATERIALS TRANSPORTATION COMPANY
and shall not be reproduced, copied,
lent, or disposed of, nor used for any
purpose other than for which it is
specifically furnished and must be
returned upon demand.



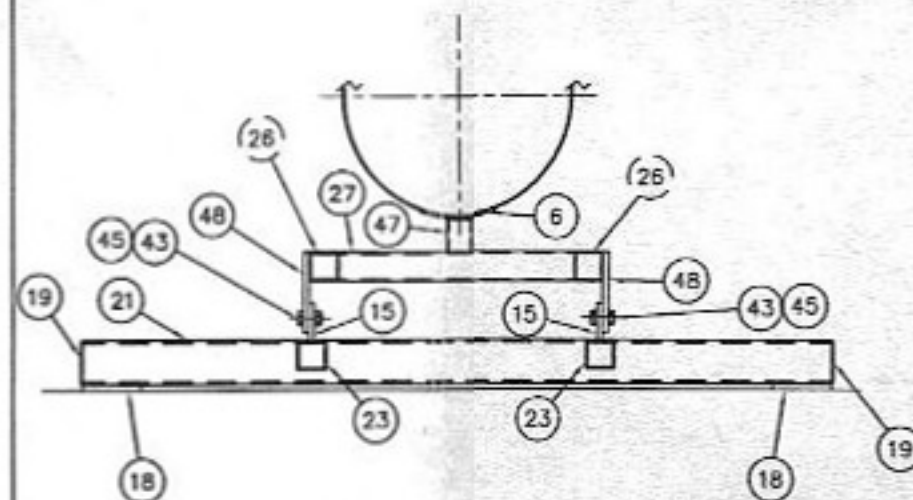
REV	DESCRIPTION	DATE
2	REVISED PER RDC #5952	05/17/2000
1	REVISED PER RDC #5847	03/27/2000

DESIGNED BY J. L. HARRIS	CHECKED BY J. L. HARRIS	DATE 05-21-2000
APPROVED BY J. L. HARRIS	DATE 05-21-2000	SCALE 1"=1'-0"

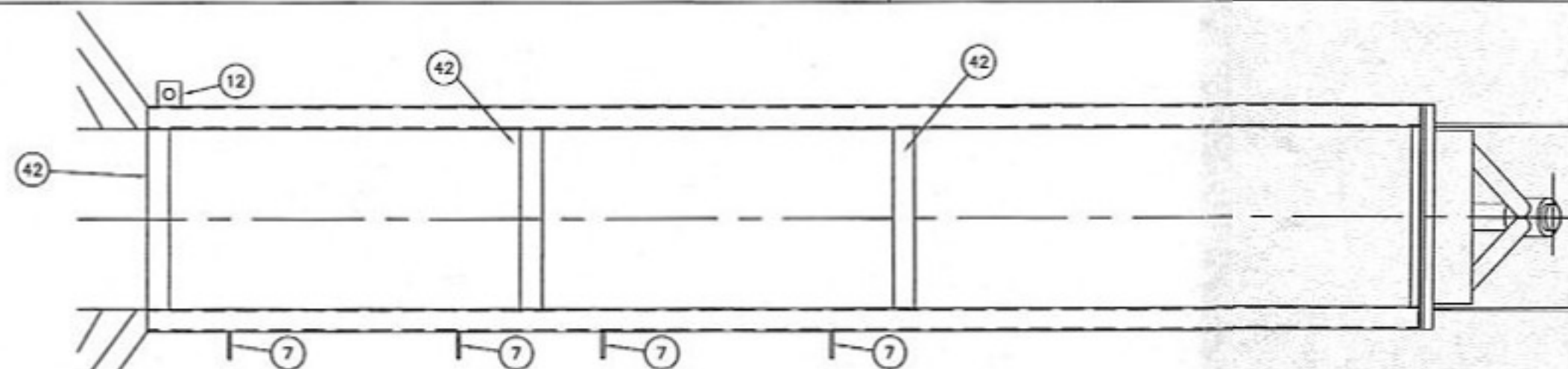
MATERIALS TRANSPORTATION CO.	
GENERAL ARRANGEMENT MTCS-16-13	
DESIGN NUMBER H3016	SHEET NO. 1 OF 2
DATE 05-21-2000	SCALE 1"=1'-0"



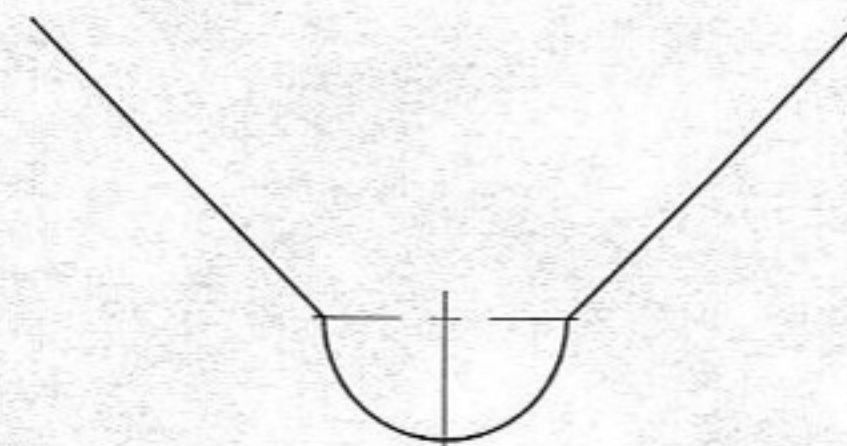
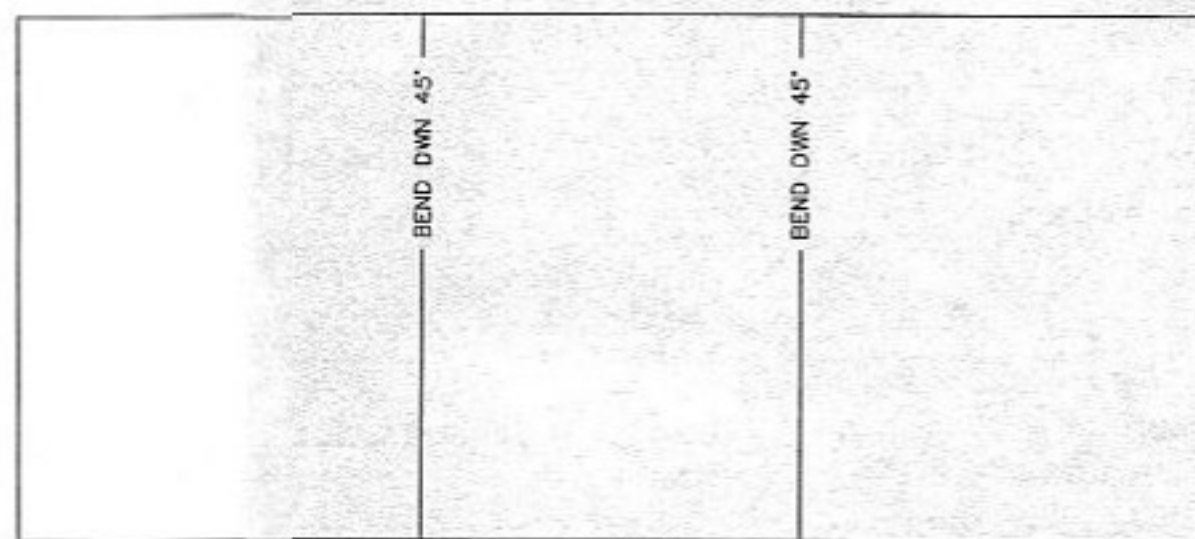
SECTION A-A



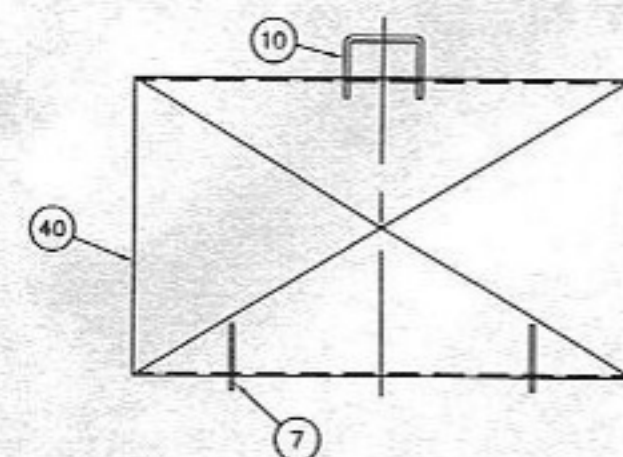
SECTION B-B



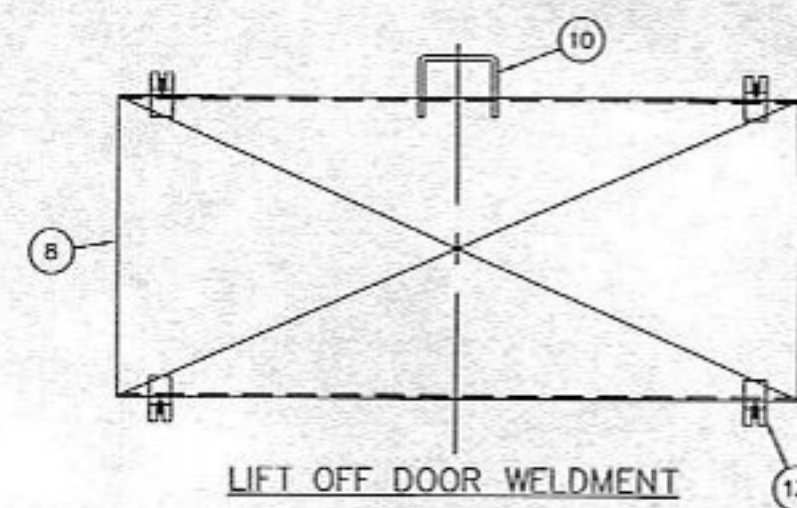
HINGE LOCATION ON TROUGH



FORMED VIEW



DOOR WELDMENT



LIFT OFF DOOR WELDMENT

UNLESS OTHERWISE SPECIFIED: TOLERANCES: XX = 0.0000 XX = 0.001 ANGULAR = 0.001 FRACTIONAL HATCHES = 1/8" SURF. FINISH = 125 SURF. WELD = 1/8"		CUSTOMER: MICHAEL ANGELO'S AUSTIN, TX ORDER # 206357 SERIAL NO. 7218 WTS ORDER # T060000-003		MATERIALS TRANSPORTATION CO. 1408 S. COMMERCE P.O. BOX 1288 TEMPLE, TEXAS 76788 TITLE: MTCS-16-13, TOP ASSEMBLY	
MATERIAL: STAINLESS STEEL	BY: AD	DATE: 7/3/2000	SCALE: 1/8"	DRAWING NUMBER: H3087	SHEET OF: 2 3
FINISH: GLASS BEAD	CHECKED: GTT	DATE: 8/2/2000	APPROVED:	PREVIOUS EDR. NO.:	DRAWER: 10