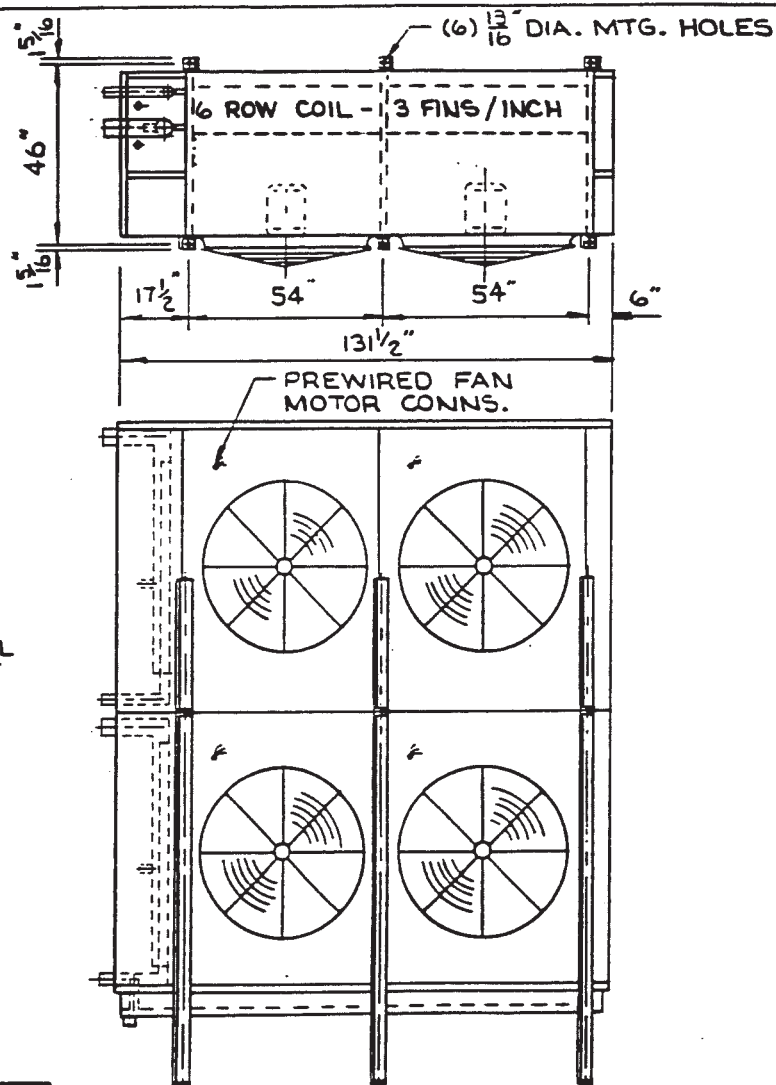
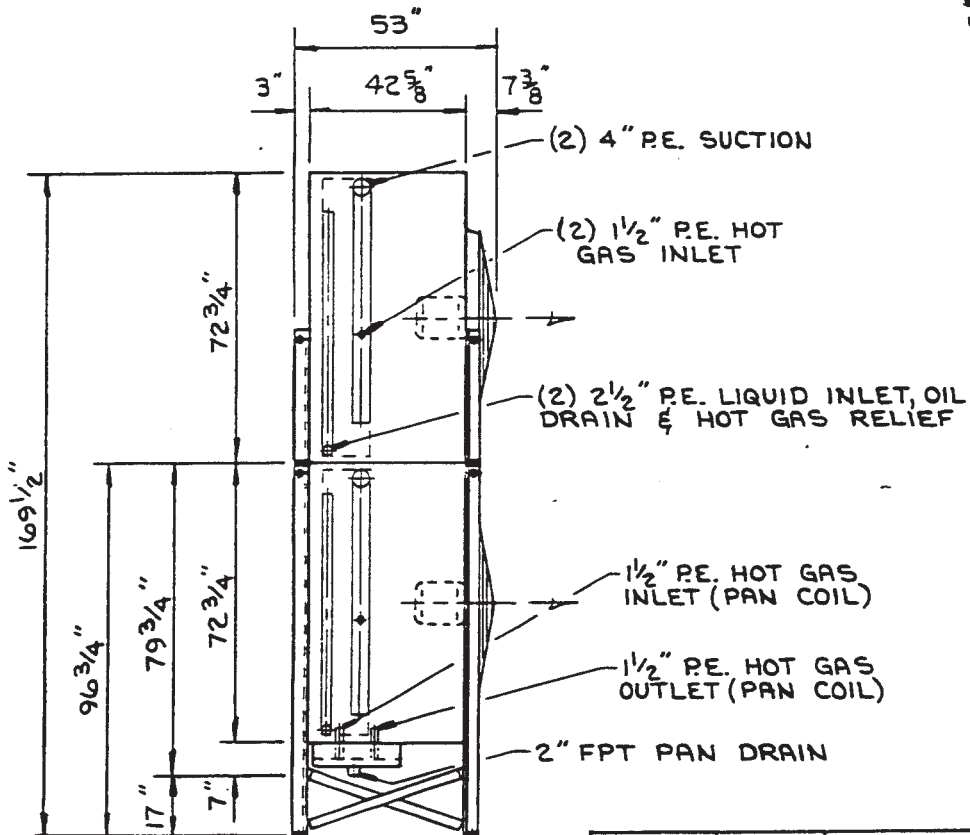


NOTE: END VIEW SHOWN LESS END PANELS FOR CLARITY



SO 6352 PAGE: 1 QTY: 2 LH

UNIT DATA:

CASING: GLV SHEET
 PAN: HOT DIP GLV AFTER FAB
 INSUL w/ GLV SHT COVER
 PAN COIL: UNDER INNER PAN
 PLATFORM MOUNTED w/
 STACKED ARRANGEMENT

FAN DATA:

60036 CFM/.5" ESP
 (4) 42" DIR DRV PROP FANS
 (4) 3 HP ODP 1160 213T
 460-3-60 LTG FAN MOTORS

PERFORMANCE DATA:

28 TONS/10°F TD
 FEED: FLOODED AMMONIA
 -25°F ROOM; -35°F COIL

FCSX10663-4-3 MF

FREEZER UNIT

for

UNITED STATES COLD STORAGE INC

ECN	DATE
60-2	2-19-90

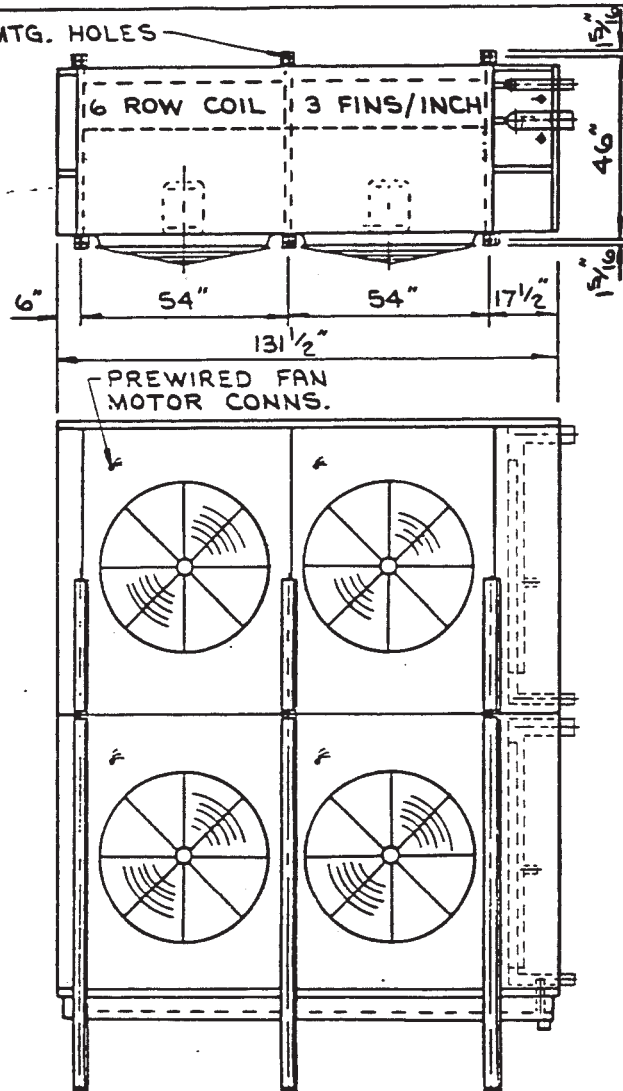
IMECO

B-1890072

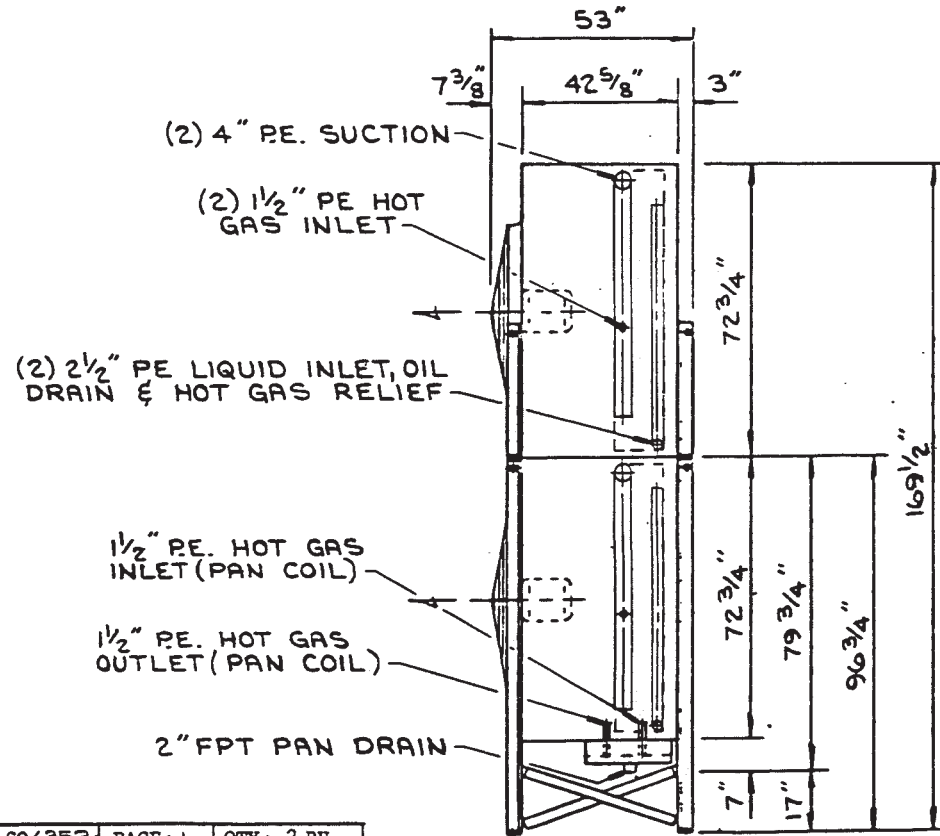
DR: 15
 DA: 31-90

B-1890846

(6) $1\frac{3}{16}$ " DIA. MTG. HOLES



NOTE: END VIEW SHOWN LESS END PANELS FOR CLARITY



S06352 PAGE: 1 QTY: 2 RH

UNIT DATA:

CASING: GLV SHEET
PAN: HOT DIP GLV AFTER FAB
INSUL w/ GLV SHT COVER
PAN COIL: UNDER INNER PAN
PLATFORM MOUNTED w/
STACKED ARRANGEMENT

FAN DATA:

60036 CFM/.5" ESP
(4) 42" DIR DRV PROP FANS
(4) 3 HP ODP 1160 213T
460-3-60 LTG FAN MOTORS

PERFORMANCE DATA:

28 TONS/10°F TD
FEED: FLOODED AMMONIA
-25°F ROOM; -35°F COIL

FCSX10663-4-3 MF

FREEZER UNIT

for

UNITED STATES COLD STORAGE INC

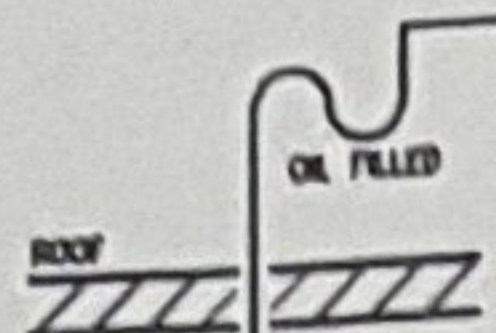
ECN	DATE
CO #2	2-18-90

MECOS

B-1890073

DR: TBJ
DA: 1-31-90

B-1890845



EQUIPMENT SPECIFICATION ITEM BF4	
DESIGN PRESSURE	350 PSIG
OPERATING PRESS./TEMP.	1.6" VAC/-30° F
NOMINAL CAPACITY @ DESIGN	75 PSY/HR
DEFROST METHOD	

EQUIPMENT SPECIFICATION ITEM BF3	
DESIGN PRESSURE	350 PSIG
OPERATING PRESS./TEMP.	1.6" VAC/-30° F
NOMINAL CAPACITY @ DESIGN	75 PSY/HR
DEFROST METHOD	

SURGE DRUM 30" X 12" W	
VESSEL DESIGN PRESSURE	350 PSIG
OPERATING PRESS./TEMP.	1.6" VAC/-30° F
VESSEL INTERNAL VOLUME	58.9 CU. FT.
OPERATING LIQUID CAPACITY	355 LBS.
HIGH LEVEL LIQUID CAPACITY	955 LBS.

7" DIA. PIPE USE 1700 LBS. PER FOOT TYPICAL FOR 13' DIA. SHIPMENTS

ROOM B
FOR ROOM B AIR HANDLING UNITS SEE DWG. R-03 FOR DETAILS

EQUIPMENT SPECIFICATION ITEM BF2	
DESIGN PRESSURE	350 PSIG
OPERATING PRESS./TEMP.	1.6" VAC/-30° F
NOMINAL CAPACITY @ DESIGN	75 PSY/HR
DEFROST METHOD	

EQUIPMENT SPECIFICATION ITEM BF1	
DESIGN PRESSURE	350 PSIG
OPERATING PRESS./TEMP.	1.6" VAC/-30° F
NOMINAL CAPACITY @ DESIGN	75 PSY/HR
DEFROST METHOD	

SURGE DRUM 30" X 12" W	
VESSEL DESIGN PRESSURE	350 PSIG
OPERATING PRESS./TEMP.	1.6" VAC/-30° F
VESSEL INTERNAL VOLUME	58.9 CU. FT.
OPERATING LIQUID CAPACITY	355 LBS.
HIGH LEVEL LIQUID CAPACITY	955 LBS.

- 14 1-1/2" MPSCAL +25° F FROM INTERCOOLER DWG. R-02
- 15 6" MTS -30° F TO LOW TEMP. PUMP RECOVERER DWG. R-02
- 37 1-1/2" DC +50° F TO MTS HEADER DWG. R-03A
- 10 2" MPSCAL +25° F FROM INTERCOOLER DWGS. R-03,02
- 17 6" MTS +15° F TO INTERCOOLER DWGS. R-03,02
- 11 6" LYS -20° F TO LOW TEMP. RECOVERER DWGS. R-03,02
- 5 2" HD +140° F FROM COMPRESSOR DISCHARGE DWGS. R-03,01

NOTE: LYS, MTS, & MPSCAL LINES ARE NOT INSULATED INSIDE FREEZER ROOMS, ONLY THE HOT GAS HEADER.

SHIPPING DOCK AREA
SEE DWG. R-03A

NOTE: LYS, MTS, & MPSCAL LINES ARE NOT INSULATED INSIDE FREEZER ROOMS, ONLY THE HOT GAS HEADER.