

2004 Lull 9,000 Lb 4x4x4 Diesel Telescopic Telehandler Forklift

Mfg: Lull

Model: 944E42

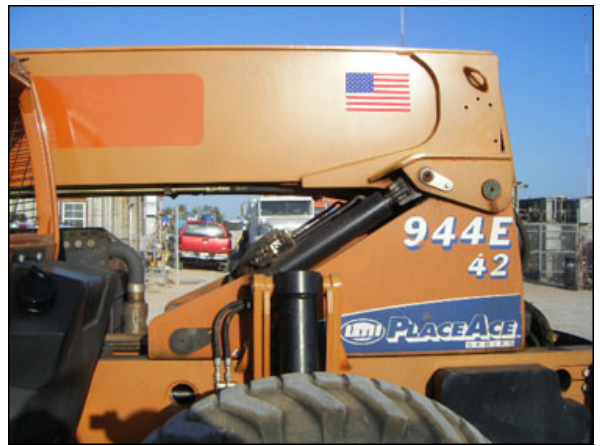
Stock No: CBHT1656.170

Serial No: 0160005348

2004 Lull 4x4x4 Telescopic Telehandler Forklift. Model: 944E42. Serial No: 0160005348. Rated capacity: 9,000 lbs. Cummins Diesel 4 cylinder, 42 ft., 3 section boom, aux hydraulic, hydraulic leveling. Tire size: 15-5-25. (3) steering modes: 4 wheel, front wheel, crab mode. Overall dimensions (retracted): 26 ft. 8 ft. L x 8 ft. 4 in. W x 7 ft. 9 in. H. Hour meter reading: 3190 hrs.(ACN902).







Model

Serial Number

Year Of Manufacture

2004

Maximum Weight Without Attachments (lbs/kg)

Maximum Capacity (lbs/kg)

3000/1361

* Refer to load capacity chart for truck with attachment, and individual load ratings stamped on forks, if equipped. Use lowest capacity of all ratings.

As released from factory this truck meets design specifications in ASME B56.6-2002 Part III.

One or more of the following patents may apply to this truck: U.S. Nos. 4,954,041; 6,349,989; 5,630,719; 6,813,847; 5,420,398; 5,042,502. Other patents pending.

Lull

Manufactured by
JLG Industries Inc.
McConnellsburg, PA
1-233-9533 USA

1705883