

Moyno Progressive Cavitation Pump

Mfg: Moyno

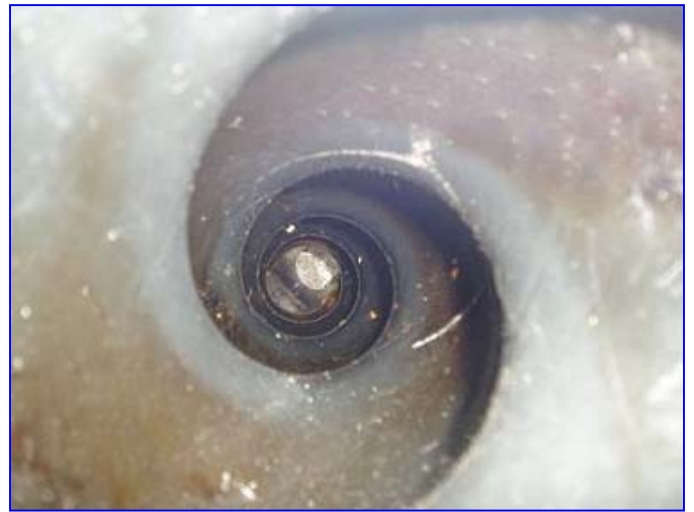
Model: 2L10H SSQ

Stock No. CCFP067.

Serial No.

Moyno Progressive Cavitation Pump. Model: 2L10H SSQ. S/N: n/a. This pump has a 304 stainless steel suction housing, 316 stainless steel internal components, and a nitrile rubber stator. Inlets/Outlets: (1) 6 in. dia. inlet with an 11 in. dia. flange and (8) attachment holes and (1) 3 in. dia. outlet. 10 hp U.S. Motor, 1,755 rpm, 208-230/460 V, 28.9-27.2/13.6 F.L. amps (33.4/16.7 S.F. amps), 60 Hz, 3-phase. U.S. Motors Varidrive Module, 10 hp max input at 1,750 rpm, 450/3,600 min/max rpm, 335 in-lbs max output torque. U.S. Motor Drive, 9-ratio, 1,750 rpm (input), 9,460 in-lbs torque (output). Overall Dimensions: 115 in. L x 19-1/2 in. W x 33 in. H.







Robbins & Myers, Inc. Moyno Pump Division Springfield, Ohio 45501 513-327-3553

Moyno Pump Division
Springfield, Ohio 45501

Performance Data

February 15, 1978

Moyno Models: 2L10H, 2SWG10H, 2J10H, 2JS10H

Curve 65.00

| | | | | | | | |
|------------|-----|-----|-----|-----|-----|-----|------|
| RPM | 100 | 200 | 300 | 400 | 500 | 600 | 700 |
| NPSH REQ'D | 1.1 | 2.1 | 3.2 | 4.7 | 7.4 | 9.9 | 12.6 |
| MIN. HP | 2 | 5 | 5 | 7½ | 10 | 10 | 15 |

-70 Durometer (Buna, Viton, EPDM, Hypalon,)-55 Durometer (Natural Only)

Data Based on water @ 70°F

