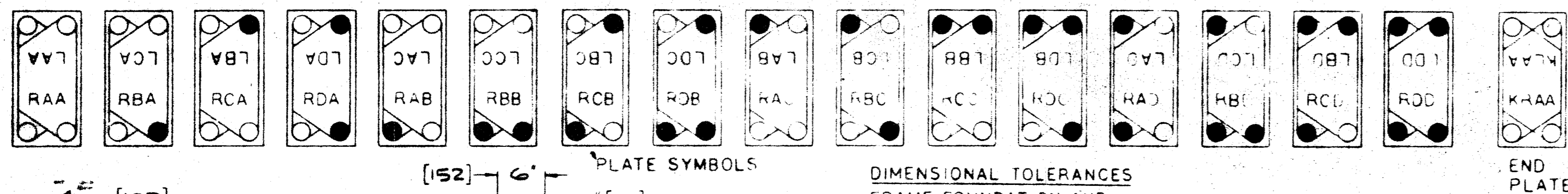


PLATES MUST BE ARRANGED ALTERNATELY LEFT AND RIGHT. FOR CONVENIENCE ON THIS DRAWING, WHERE BLOCKS OF R AND LAA PLATES OCCUR, THE TOTAL NUMBER OF EACH IS GIVEN.

COOLER PASSES  
 PRODUCT - 10 OF 7, 4 OF 6  
 TOWER WATER - 2 OF 16

HEATER PASSES  
 PRODUCT - 6 OF 7  
 HOT WATER - 3 OF 14

ELEVATION OF PLATE ARRANGEMENT



- NOTES:
- ALL PLATES VIEWED FROM GASKET SIDE.
  - END PLATES DENOTED BY LETTER 'K' PRECEDING SYMBOL.
  - THIS MODEL HEAT EXCHANGER IS DESIGNED TO OPERATE WITH METAL TO METAL CONTACT BETWEEN PLATE SURFACES. ALL SUPPORT IS FROM PLATE CROSS OVER POINTS AND NOT FROM GASKET SEAL. THEREFORE THIS MACHINE MUST ALWAYS BE TIGHTENED TO A DEAD HARD CONDITION BEFORE OPERATION. THE PLATAGE DIM. SHOWN IS NOMINAL ONLY. DUE TO PLATE MFG. TOLERANCES PLATAGE CAN VARY  $\pm 0.005"$  PER PLATE.
  - THIS MODEL HEAT EXCHANGER IS TIGHTENED USING WRENCH ON HEX NUTS AT THE HEAD END ONLY.
  - INSTALL PLATES ALTERNATING LEFT AND RIGHT.
  - ALL DIMENSIONS ARE IN INCHES. DIMENSIONS IN BRACKETS [ ] ARE IN MILLIMETERS.
  - CUSTOMER'S PIPING TO FOLLOWER OR CONNECTOR GRID MUST ALLOW FOR FREE MOVEMENT WHEN UNIT IS OPENED FOR SERVICE AND PROVIDE FOR VARIATION OF THE TIGHTENED PLATAGE DIM.  $\phi$  OF  $\pm 1/2"$  PER 100 PLATES.

	LIQUID	RATE	TEMP. °F.	$\Delta P$ (PSI)
D U I T Y	CONCENTRATED SKIM MILK	20000 L/HR	100° → 180°	HEATER
	UNDESIGNATED OIL ADDED		185° → 90°	COOLER
	HOT WATER	160 GPM	185° → 167.8°	11
	TOWER WATER	200 GPM	82° → 98.3°	10

LIST OF PLATES: 149 SR3, 316 S.S. PARACIL GASKET  
 TOTAL "L" PLATES 74 TOTAL "R" PLATES 75

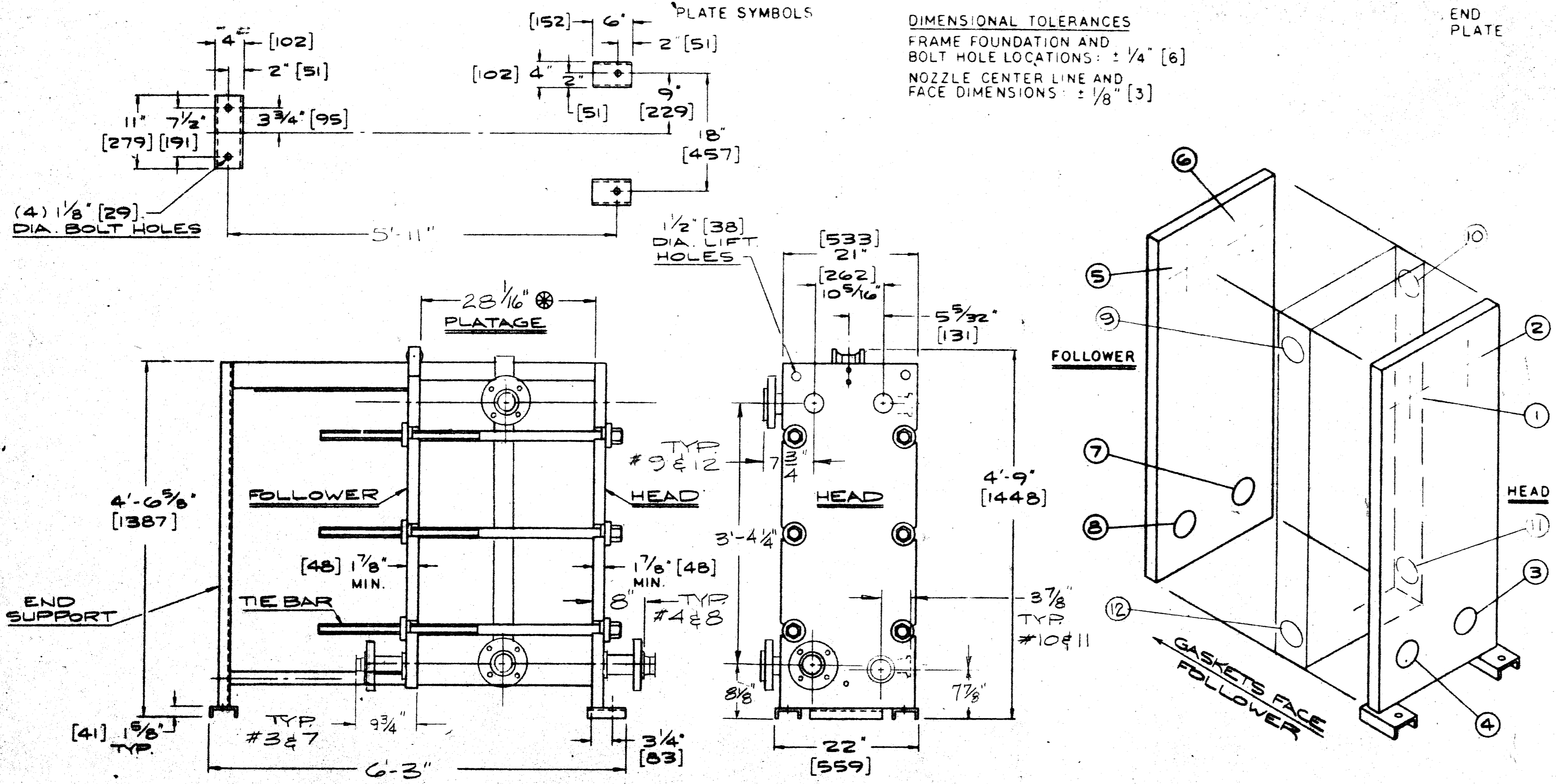
LAA - 58	RBA - 6
LAB - 3	RAB - 5
LAC - 1	RAC - 3
LBA - 6	RBA - 1
LCA - 5	RBC - 1
	RCC - 2
	SPRC - 1
	SPRCB - 1

FRAME SIZE: No. 2  
 MAX. TEST PRESSURE: 225 PSI.  
 MAX. OPERATING PRESSURE: 150 PSI.  
 PLATAGE: 28 1/16 INCHES  
 VOL. OF PRODUCT: 23.7 GALS.  
 WT. OF MACHINE DRY: 2575 LBS.  
 WT. OF MACHINE FLOODED: 2970 LBS.  
 FITTINGS: PRODUCT: 3" 316 S.S. TRI-CLAMP.  
 SERVICE: 3" SCH. 10 316 S.S. STUB ENDS W/ 150° ANSI O.S. LAP JOINT FLANGES.  
 MAX. OPERATING TEMP: 275 °F  
 MDMIT: + 8 °F @ 150 PSI

BUILT TO ASME CODE, SEC. VIII, DIV. 1

**MODEL SR35 HEAT EXCHANGER (4 UNITS)**  
 W.O. 21308  
 BRANCH No. 121-63407  
 HOMO-HEATER/COOLER  
 TAG: PERRYBURG 03

BEATRICE/HUNT  
 WESSON CORP.  
 PERRYBURG, OH



DATE	REVISION
E	
D	
C	
B	
A	12/15/88 REVISED TITLE BLOCK

APV Crepac Inc  
 395 Fillmore Ave.  
 Tonawanda, NY 14150

BY: [Signature] DATE: 9 DEC 88  
 CHECKED: [Signature] TITLE: SUPERVISOR

4.21308.0001