

Trane Water Cooled Liquid Chiller- 70 Ton

Mfg: Trane

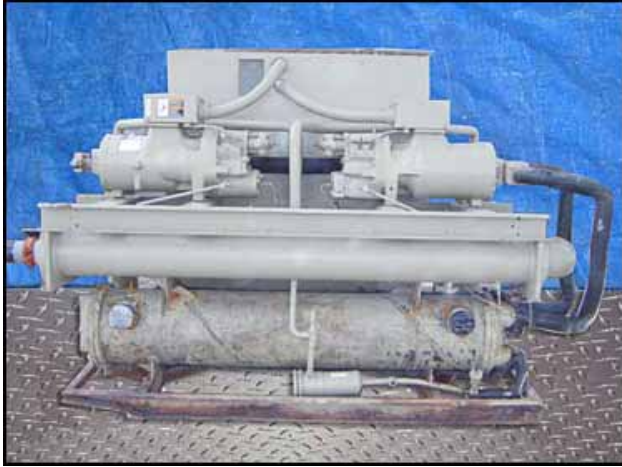
Model: RTWA070CYA01D0C0WN

Stock No.: CHMB001

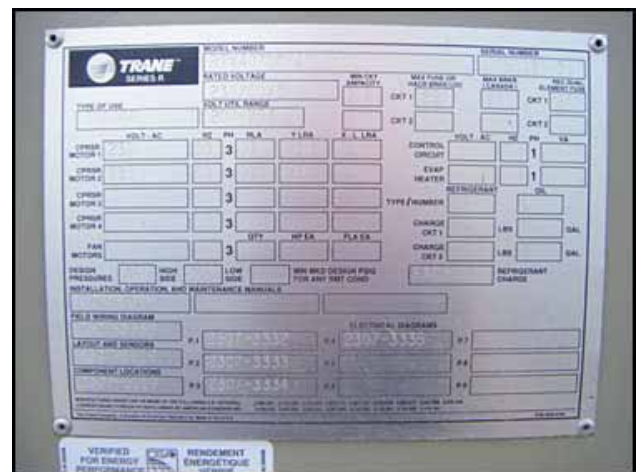
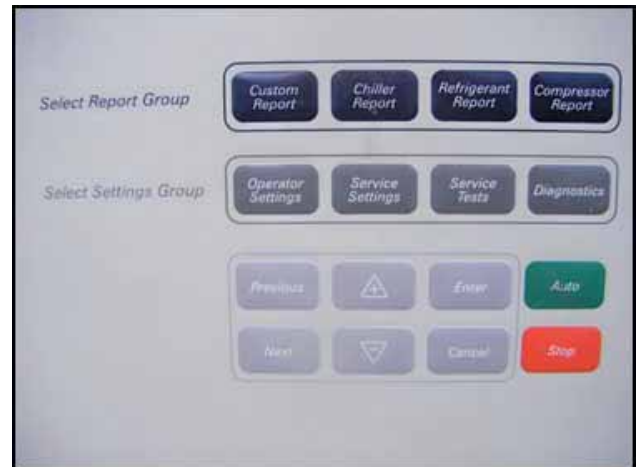
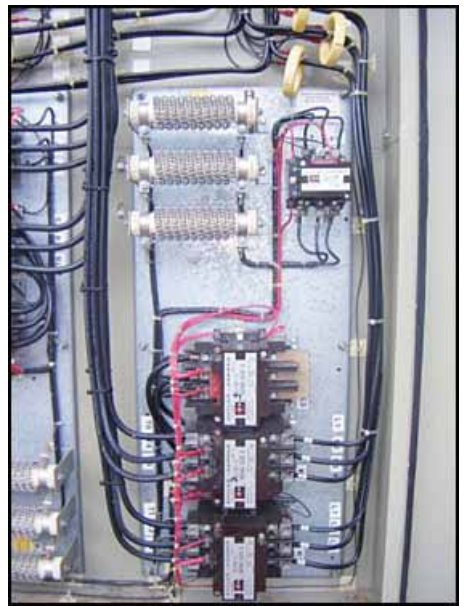
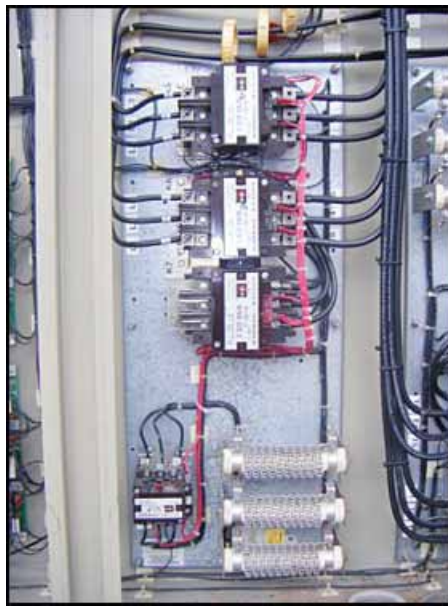
Serial No.: U96D03783

Trane Water Cooled Liquid Chiller- 70 Ton. Model: RTWA070CYA01D0C0WN. S/N: U96D03783. For indoor use only. Refrigerant: R-22. Design pressure (hi/lo): 450/300 psi. Minimum circuit ampacity: 205 amps. Maximum fuse size: 250 amps. Power supply: 230 V, 60 Hz, 3 phase. (2) Trane Helirotor Compressors, Model: CHHN035CKB0N043N, S/N's: UA6C1274 and UA6C1275, power supply: 230 V, 210 LRC (wye connection), 690 LRC (delta connection), 60 Hz, 3 phase. 1996 Trane Chiller Barrel, S/N & Nat'l Bd: 40455, MAWP: 300 psi @ 300°F, MDMT: -20°F @ 120 psi. (2) 1996 Trane Water Cooled Condensers, S/N & Nat'l Bd: 40456 and 40457, MAWP: 450 psi @ 300° F, MDMT: -20°F @ 120 psi. Trane Adaptive Control. Trane Motor Controller, Model: X13340271080, power supply: 240 V, 155 RLA (max), 604-866 LRA (range), 60 Hz, 3 phase. Inlets: (1) 4 in. dia. port (liquid infeed), (1) 4 in. dia. port. Outlets: (1) 4 in. dia. port (liquid discharge), (1) 4 in. dia. port. Overall dimensions: 9 ft. 8 in. L x 2 ft. 10 in. W x 6 ft. 1/2 in. H.









H1 H2 H3 H4

NECO HAMMOND INC.
BARABOO WI. 53913

1 PH TRANSFORMER CAT. NO. **127415**

750 VA 60 HZ 55 °C RISE

INDUSTRIAL CONTROL TRANSFORMER

X2 X13550057-03 X1 961AK

TRANE HELIROTOR™ COMPRESSOR

SERIAL NUMBER: UA6C1275

MODEL NUMBER: CHHNO35CKBONO43N

ELECTRICAL CHARACTERISTICS

230 60 3

LOCKED ROTOR CURRENT, WYE CONNECTION: 210

LOCKED ROTOR CURRENT, DELTA CONNECTION: 390

UTILIZATION RANGE: 207-253

REFRIGERANT: R22

THERMALLY PROTECTED SYSTEM

MANUFACTURED UNDER ONE OR MORE OF THE FOLLOWING U.S. PATENTS/

NAT'L BD
CERTIFIED BY
THE TRANE COMPANY-2

MAX W.P. 450 PSI AT 300°F

MDMT -20°F AT 120 PSI

SERIAL NO. 40455

W YR 1996

RES SHELL SIDE ONLY

CRN

TRANE HELIROTOR™ COMPRESSOR

SERIAL NUMBER: UA6C1274

MODEL NUMBER: CHHNO35CKBONO43N

ELECTRICAL CHARACTERISTICS

230 60 3

LOCKED ROTOR CURRENT, WYE CONNECTION: 210

LOCKED ROTOR CURRENT, DELTA CONNECTION: 390

UTILIZATION RANGE: 207-253

REFRIGERANT: R22

THERMALLY PROTECTED SYSTEM

MANUFACTURED UNDER ONE OR MORE OF THE FOLLOWING U.S. PATENTS/

SERIAL NO 40455

MAX WP 300 PSIG

MAX TEMP 300°F

NATL BD 40455

CERTIFIED BY THE TRANE COMPANY-2

SER MAX MAX

TRANE MOTOR CONTROLLER

VOLTS 240 PHASE 3 HZ 60

MODEL NO: X13340271080

MAX RLA: 155

LRA RANGE: 604 - 800

MAXIMUM SHORT CIRCUIT RATING FOR THIS CONTROLLER IS 10,000 RMS SYMMETRICAL AMPERES AT 240 V.

Made in USA by Eaton / Cutler-Hammer for The Trane Company, LaCrosse, WI 54601-7500

CO Underwriters Laboratories Inc. LISTED OPEN INDUSTRIAL CONTROL PANEL NO. AL-333238 CUTLER-HAMMER Made in U.S.A.

Cutler-Hammer

E.T.N

CO Underwriters Laboratories Inc. LISTED OPEN INDUSTRIAL CONTROL PANEL NO. AL-333238 CUTLER-HAMMER Made in U.S.A.

Cutler-Hammer

E.T.N

TRANE MOTOR CONTROLLER

VOLTS 240 PHASE 3 HZ 60

MODEL NO: X13340271080

MAX RLA: 155

LRA RANGE: 604 - 800

MAXIMUM SHORT CIRCUIT RATING FOR THIS CONTROLLER IS 10,000 RMS SYMMETRICAL AMPERES AT 240 V.

Made in USA by Eaton / Cutler-Hammer for The Trane Company, LaCrosse, WI 54601-7500

CO Underwriters Laboratories Inc.