

1990 Hoppman FT-50 Centrifugal Feeder

Mfg: Hoppman

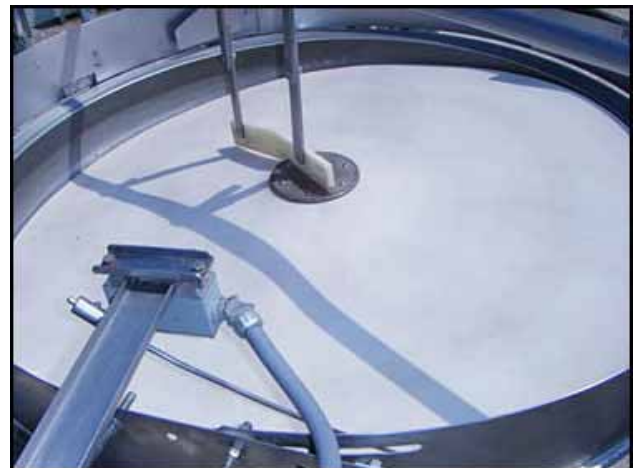
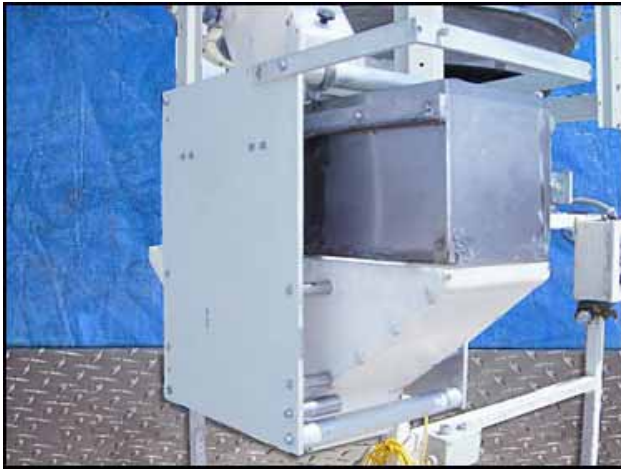
Model: FT-50

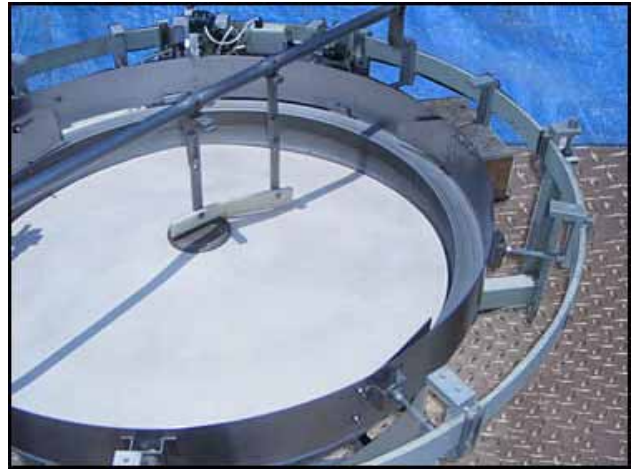
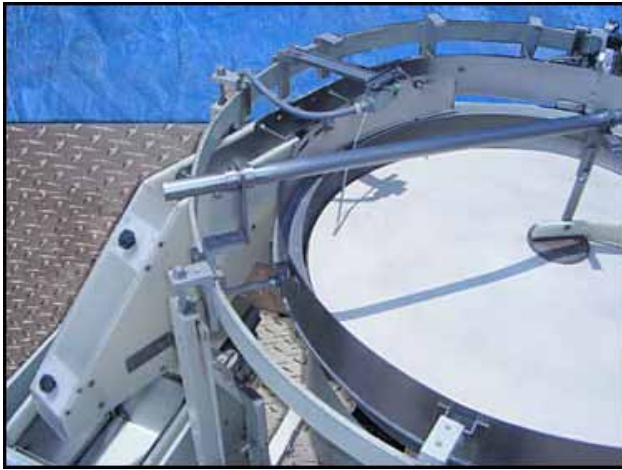
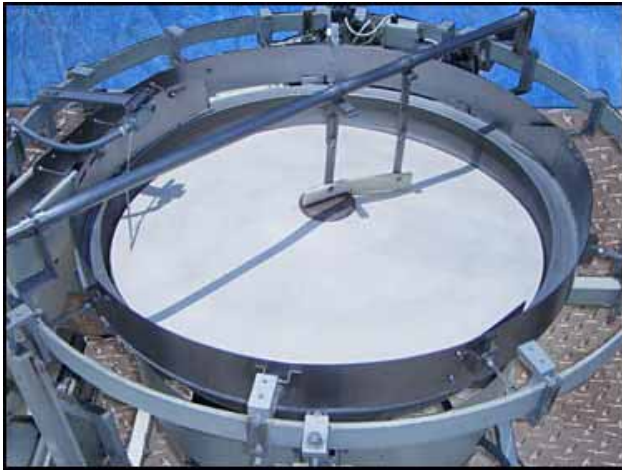
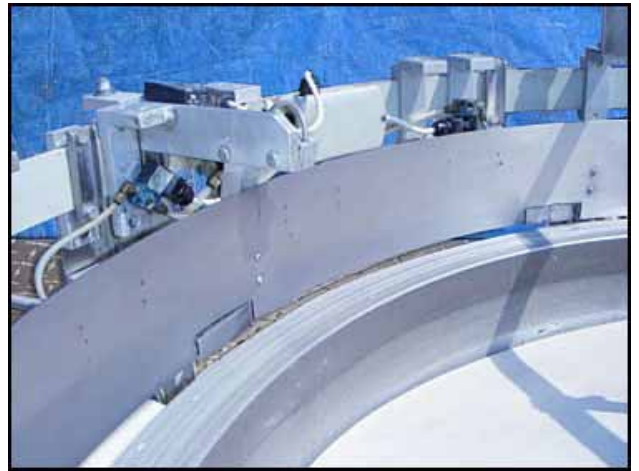
Stock No.: DNBA053

Serial No.: 12832 and 12831

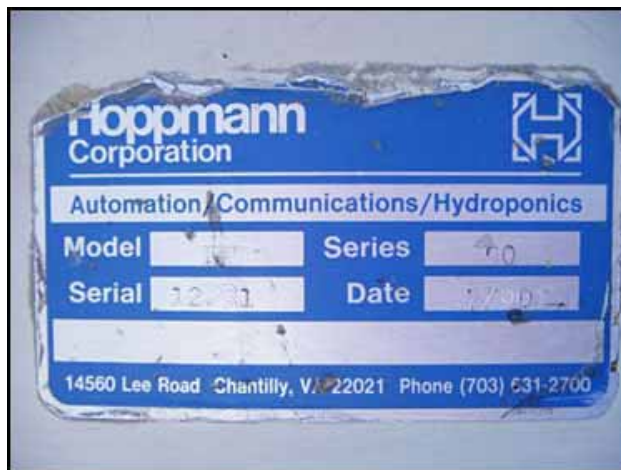
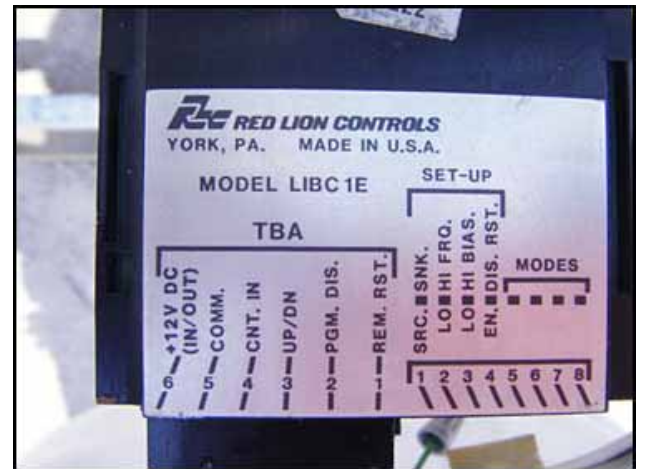
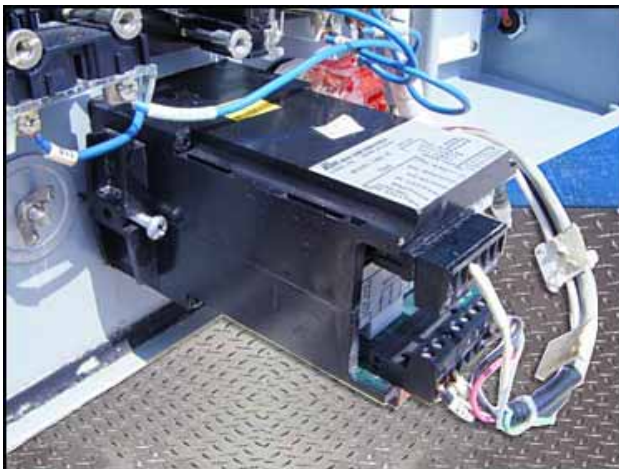
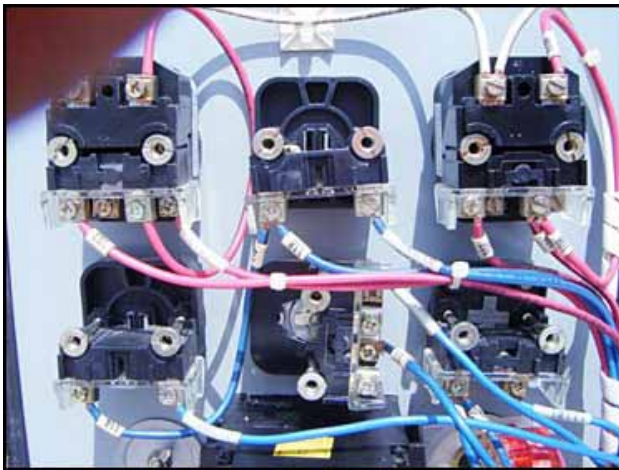
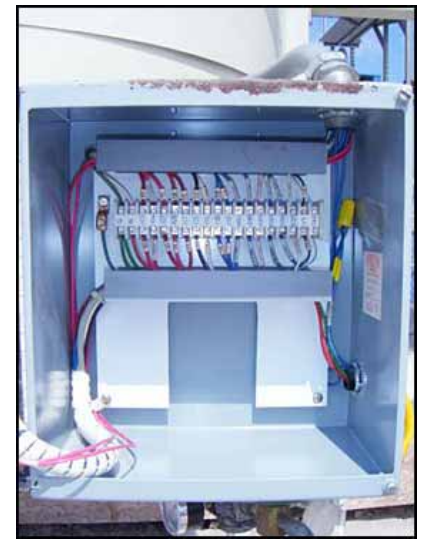
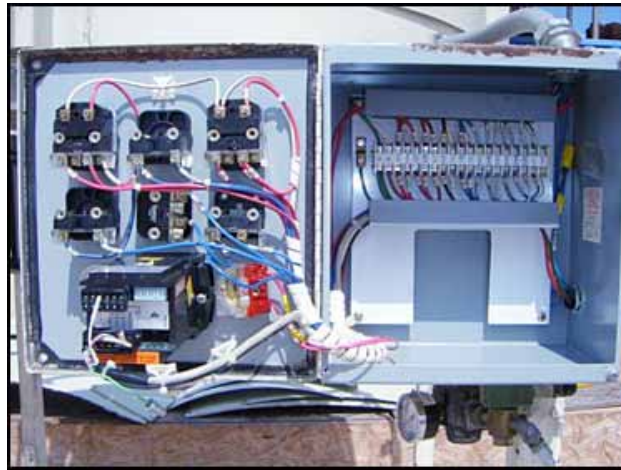
(2) 1990 Hoppman Centrifugal Feeders. Model: FT-50. S/N's:12832 and 12831. Inside dimensions: 1 ft. 1-1/2 in. L x 11-1/2 in. W x 11-1/2 in. H. Bowl diameter: 4 ft. 6-1/2 in. dia. x 10-1/2 in. H. Drum diameter: 3 ft. 11 in. Maximum object size: 3 in. W x 4-1/2 in. H. Baldor Electric Motor, .75 hp, 1750 rpm, 90 V. Baldor Speed Reducer, ratio: 10, 175 rpm (final). Includes reject mechanism with low level limit switch. Inlets: (1) 4 ft. infeed. Outlets: (1) 6-1/2 in. L x 4 in. W discharge, (2) 11 in. L x 10 in. W discharge. Outside dimensions: 7 ft. L x 6 ft. 10 in. W x 8 ft. 4 in. H.











Hoppmann
Corporation



Automation/Communications/Hydroponics

Model		Series	70
Serial	12-31	Date	1/7/01

14560 Lee Road Chantilly, VA 22021 Phone (703) 631-2700


Corporation

Automation/Communica

Model Series

Serial Date

14560 Lee Road Chantilly, VA 22021


nn 

mmunications/Hydroponics

Series

Date

ntilly, VA 22021 Phone (703) 631-2700

Hoppmann Corporation 

Model FT-Series

The method of sorting articles by using this machine is protected by U. S. Patent No. 3,900,107. The price of purchasing this machine includes a royalty for the right of any purchaser hereof to use the same according to the method set forth in U.S. Patent No. 3,900,107. It is the patent owner's position that the machine used in practicing the method set forth in U. S. Patent No. 3,900,107 is a nonstaple machine, the only use for which is in practicing the patented process. If the machine is held to be a staple article of commerce, the patent owner will grant a nontransferable license to use the method set forth in U.S. Patent No. 3,900,107 with a machine from any source upon written request at the same royalty rate as that included in the price of purchasing this machine.

14560 Lee Road P.O. Box 601 Chantilly, VA 22021 Phone (703) 631-2700

Hoppmann Corporation 

Automation/Communications/Hydroponics

Model Series

Serial Date

14560 Lee Road Chantilly, VA 22021 Phone (703) 631-2700

Automation/Communi

Model Series

Serial Date

14560 Lee Road Chantilly, VA

unications/Hydroponics

Series

Date

VA 22021 Phone (703) 631-2700