

Freezer Stainless Steel Infeed Belt Conveyor

Mfg:

Model:

Stock No: DNBA225

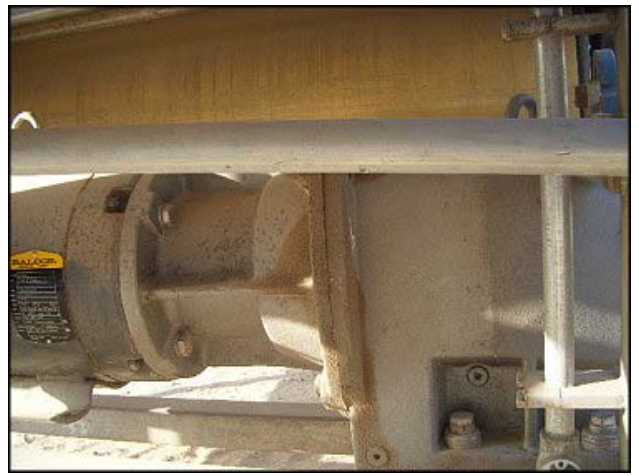
Serial No:

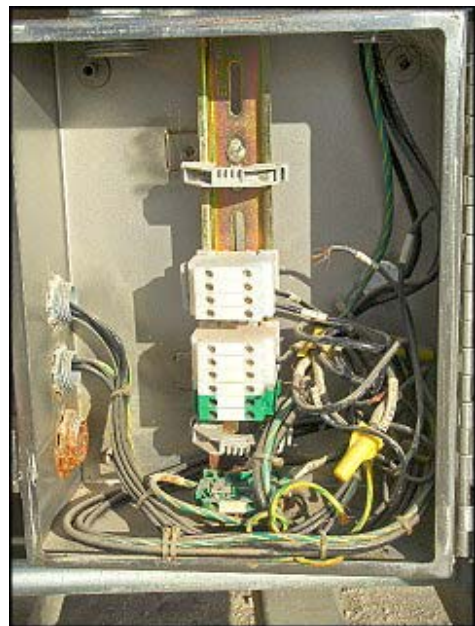
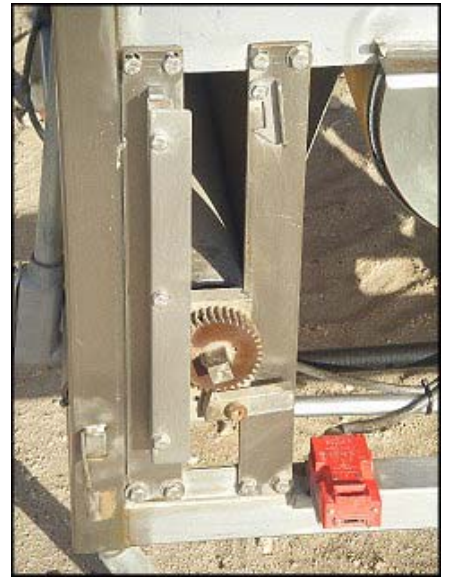
Freezer Stainless Steel Infeed Belt Conveyor. Infeed height: 2 ft. 5 in. Exit height: 4 ft. 7 in. Belt Dimensions: 13 ft. 9 in. L x 3 ft. 7 ¼ in. W. Baldor Electric motor, 3 hp, 1160 rpm, 208-230/460 V, 9.8-10.2/5.1 amps, 60 Hz, 3 phase. Nord gear box, model: SK 42N210TC, ratio: 29.29:1. Final rpm: 39.6. Overall dimensions: 13 ft. 9 in. L x 4 ft. 9 in. W x 4 ft. 9 ½ in. H.(BJ).













NORD GEAR CORPORATION-USA/WWW.NORD.COM

SK 42 N210TC

S/N 78005374732.00

RATIO 29,29

TORQUE 09036 LB-IN

SPEED 0 RPM

B3 MTG POS

FOR GEAR LUBRICATION SEE MANUAL

UNICASE

Chevron

Chevron Lubricating Oil
FM ISO 220

US: 800-822-5823
www.chevronequipment.com



BALDOR
INDUSTRIAL MOTOR

| | | | | | |
|----------------|--------------|----------------|-------------|-----|-----------|
| CAT. NO. | M3704T | | | | |
| SPEC. | 37G813T168H1 | | | | |
| HP | 3 | | | | |
| VOLTS | 208-230/460 | | | | |
| AMPS | 9.8-10.2/5.1 | | | | |
| R.P.M. | 1160 | | | | |
| FRAME | 213T | HZ | 60 | PH | 3 |
| SER. F. | 1.15 | CODE | J | DES | B CLASS F |
| NEMA NOM. EFF. | 87.5 | % | P.F. | 63 | % |
| RATING | 40C AMB-CONT | | | | |
| CC | 010A | USABLE AT 208V | 9.8 | A | 90 |
| BEARINGS | DE 6307 | ODE | 6206 | | |
| ENCL. | TEFC | SN | F0411302145 | | |

MFG. BY BALDOR ELECTRIC CO., U.S.A.
MP1256L