

CIP System

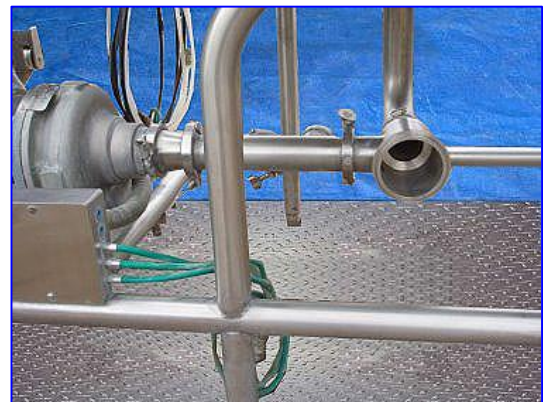
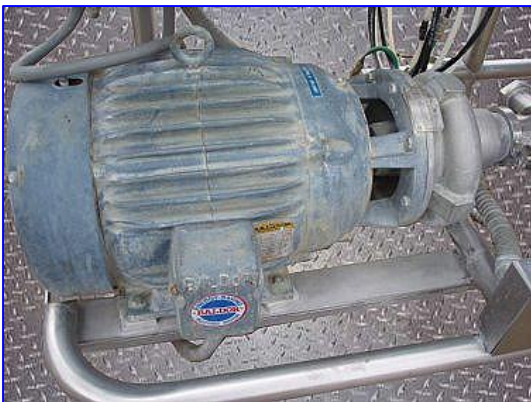
Mfg:

Model:

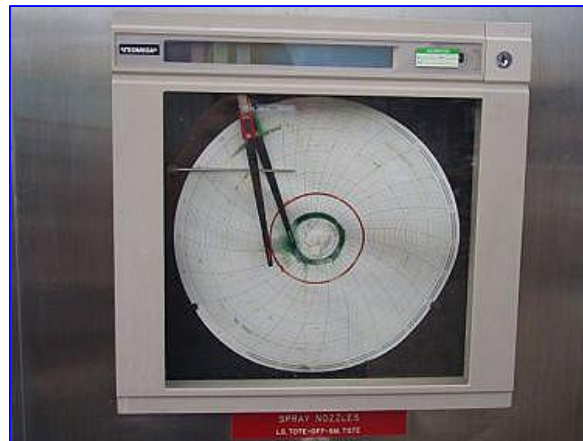
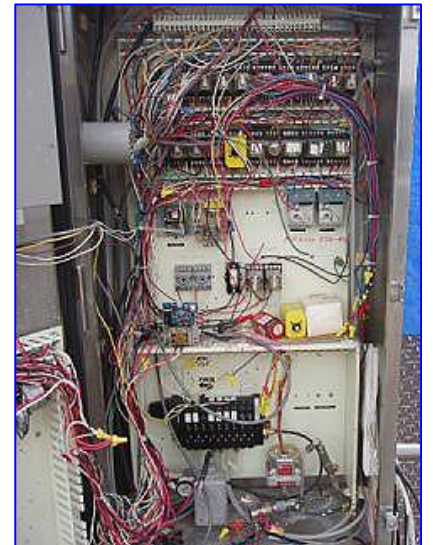
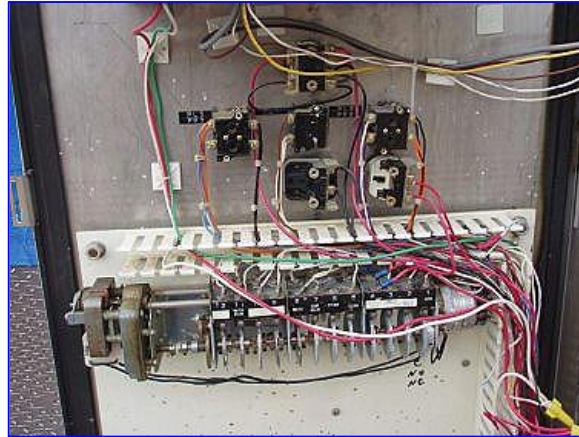
Stock No. DSLP693.46

Serial No.:

CIP System. First compartment dimensions: 23 in. L x 23 in. W x 27-1/2 in. L. Second compartment dimensions: 23-1/2 in. L x 48 in. W x 27-1/2 in. H. Ampco Centrifugal Pump, Model: 3x 2-1/2 ZCH2, S/N: V-55-937-1-1, impeller diameter: 6-5/8 in. Baldor Electric Motor, 15 hp, 3525 rpm, 230/460 V, 38-10 amps, 60 Hz, 3 phase. Ecolab controls with Omega Chart Recorder. Inlet: (1) 2 in. (1) 4 in. Outlet: (1) 2 in. Overall dimensions: 31 in. L x 105 in. W x 86 in. H.







INDUSTRIAL MOTOR


CAT. NO.	JPM2394T		
SPEC.	09E26Z78		
FRAME	254JM	SER.	1178
H.P.	15		
VOLTS	230/460		
AMPS	38.7		
R.P.M.	3525		
HZ.	6	PH	3
SER. F.	1	DES	CODE
FULL LOAD EFF.	%	P.F.	%
RATING			

BALDOR ELECTRIC CO.
FORT SMITH, ARK.
309-732-10012

BALDOR INDUSTRIAL MOTOR

CAT. NO.	JPM2394T		
SPEC.	09E26Z78		
FRAME	254JM	SER.	1178
H.P.	15		
VOLTS	230/460		
AMPS	38.7		
R.P.M.	3525		
HZ.	6	PH	3
SER. F.	1	DES	CODE
FULL LOAD EFF.	%	P.F.	%
RATING			

BALDOR ELECTRIC CO.
FORT SMITH, ARK.
309-732-10012

MILWAUKEE CENTRIFUGAL PUMP
 **WIS., U.S.A.**
 MODEL **3X2 1/2 ZCH2**
 IMP. DIA. **6.5/8** RPM **3500**
 SERIAL **V-05937-1-1**

CRAFTED BY:
ECONOMICS LABORATORY, INC.
 Highway 51 & Rockton Road
 South Beloit, Illinois 61080