

## General Electric Dry-Type Step-Down Distribution Transformer- 1500 KVA

Mfg: General Electric

Model: 02-03-10036A

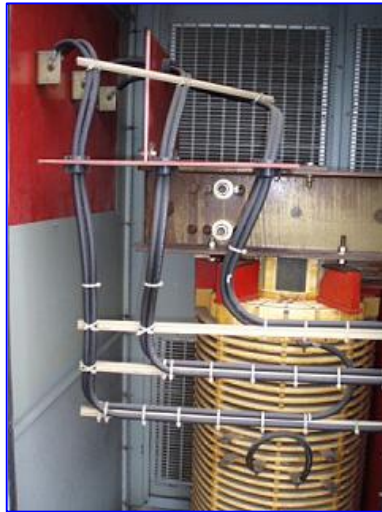
Stock No. DTTC050.

Serial No. P107722

General Electric Dry-Type Step-Down Distribution Transformer- 1500 KVA. S/N: P107722. S.O: 02-03-10036A. Design: AC 374-X0180. Instruction book: GE 100-15. UL Listed No: 4J37. High Voltage: 4160 V. Low Voltage: 2400 V. Hertz: 60 Hz. Phase: 3 phase. Class: AA / FFA (2000 KVA with future fans). Rise: 302 °F (150 °C). Insulation sys: 428 °F (220 °C). Vector: DD. Type: HT. Impedance: 5.57% at 338 °F (170 °C). Core and coil weight: 6500 lbs. Total unit weight: 9000 lbs. Originally installed at Tropicana plant. Overall dimensions: 11 ft. 6 in. L x 4 ft. 8 in. W x 7 ft. 8 in. H.

Connect taps	Voltage	Amps at kVA(1500)
· 4-5	4368	198
· 4-6	4264	203
· 3-6	4160	208
· 3-7	4056	214
· 2-7	3952	219
LV	2400	361





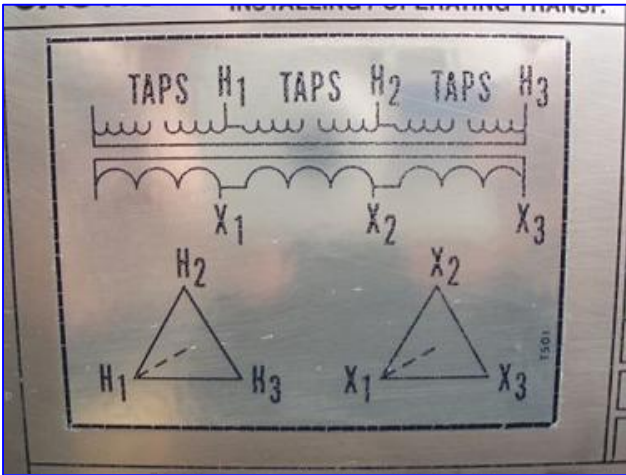


KVA 1500 THREE  
 CLASS AA/FFA RISE 150  
 HV 4160  
 LV 2400  
 2000 KVA WITH FUTURE FANS  
 INSTR BOOK GE100-15 CORE & C  
**CAUTION!** READ INSTRUCTION BOOK BEFORE INSTALLING / OPERATING TRANSF.

TAPS H<sub>1</sub> TAPS H<sub>2</sub> TAPS H<sub>3</sub>

FREQ 60 HZ VECTOR  
 INSUL SYS 220°C TYPE  
 BIL 60 KV COND  
 BIL 30 KV COND  
 IMPEDANCE 5.57 % AT 170 °C  
 6500 LBS TOT WT 9000 LBS

VOLTAGE	AMPS AT 1500 KVA	AMPS AT KVA	AMPS AT KVA
4368	198		
4264	203		
4160	208		



CONNECT TAPS	VOLTAGE	AMPS AT 1500 KVA	AM
4-5	4368	198	
4-6	4264	203	
3-6	4160	208	
3-7	4056	214	
2-7	3952	219	
LV	2400	361	

GE SN P107722 SO  
 KVA 1500 TH  
 CLASS AA/FFA RISE 150  
 HV 4160  
 LV 2400  
 2000 KVA WITH FUTURE FANS  
 INSTR BOOK GE100-15 COR  
**CAUTION!** READ INSTRUCTION BOOK BEFORE INSTALLING / OPERATING TRANSF.

2-7	3952	219	
LV	2400	361	

**DANGER! HIGH VOLTAGE! DE-ENERGIZE BEFORE CHANGING**

**PE TRANSFORMER**

H<sub>3</sub> X<sub>1</sub> X<sub>3</sub>  
 LV 2400 361  
**DANGER! HIGH VOLTAGE! DE-ENERGIZE BEFORE CHANGING**  
 MADE IN USA ED&C, Plainville, CT **DRY TYPE TRANSFORMER**  
**UL LISTED - DISTRIBUTION TRANSFORMER - 4J37**  
 MINIMUM CLEARANCE FROM TRANSFORMER ENCLOSURE TO WALL OR OTHER OBSTACLE IS 12 INCHES.  
 ABOVE CLEARANCE IS FOR VENTILATION PURPOSE ONLY AND IS NOT INTENDED TO REPLACE OR TAKE PRECEDENT OVER NATIONAL, STATE AND LOCAL CODES WHICH MAY REQUIRE LARGER CLEARANCES.

**Electrical Distribution &**

SO NO	02-03-100354	DSGN	
THREE PHASE	FREQ	60	
E	150 °C	INSUL SYS	22
	BIL	60	
	BIL	30	
ANS	IMPEDANCE	5	
CORE & COIL WT	6500	LBS	TO

**tion & Control**

DSGN	40374-N0150		
Q	50	HZ	VECTOR DD
IL SYS	220 °C	TYPE	HT
	60	KV	COND CU
	30	KV	COND CU
EDANCE	5.57	%	AT 170 °C
	00	LBS	TOT WT 9000 LBS
TAGE	AMPS AT	AMPS AT	AMPS AT

**TRANSFORMER - 4J37**

ENCLOSURE TO WALL OR OTHER OBSTACLE

RPOSE ONLY AND IS NOT INTENDED TO REPL