

1998 Girton Pallet Washer Model CW10PS and 1997 Pasco Series 5000 Pallet Dispenser / Stacker System

Mfg: Girton/Pasco

Model: CW10PS / Series 5000

Stock No. DTTC2002.

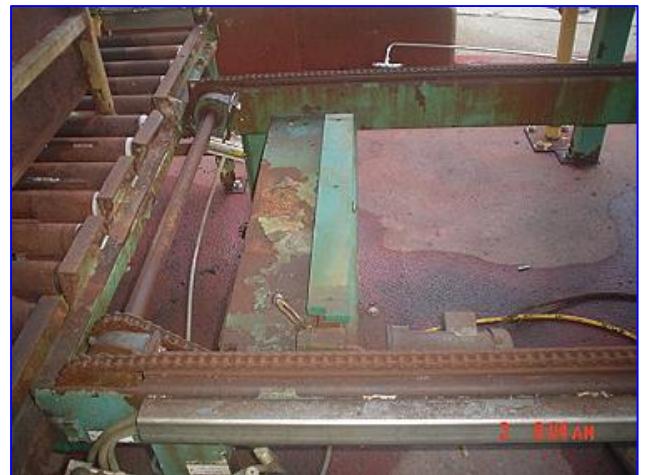
Serial No. 97092401

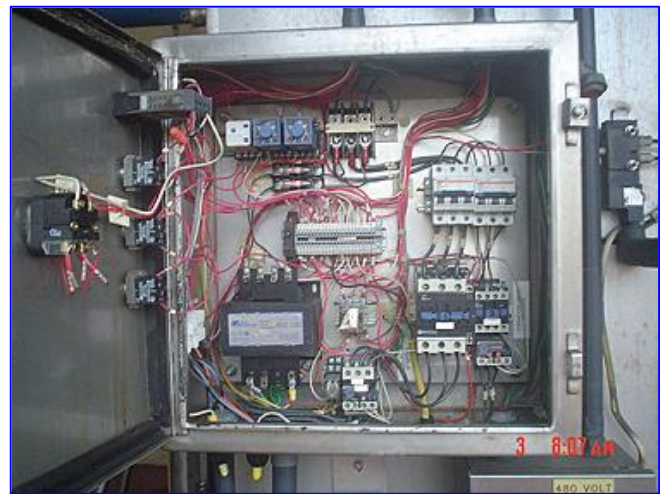
1998 Girton Pallet Washer Model CW10PS and 1997 Pasco Series 5000 Pallet Dispenser / Stacker System. Serial number: 97092401. Originally installed at at Tropicana. This combination system dispenses, washes and stacks wooden pallets up to 72 in. L x 7-1/2 in. W at the rate of 120 per hour. 1997 (Pasco) Productive Automated Systems Corporation Pallet Dispenser / Pallet Stacker. Job No: 1306. Pallet Dispenser Motorized Roller Conveyor, 2-1/2 in. dia. rollers, maximum aperture/clearance above belt: 7 in. W x 3 ft. H, conveyor infeed/exit height: 27 in. Baldor Industrial Motor, 3/4 hp, 1725 rpm, 208-230/460 V, 2.3-2.2/1.1 amps, 60 Hz, 3 phase. Browning Gear Reducer, 40.1 ratio, 43 rpm (final). Pallet Dispenser Motorized Chain Conveyor, maximum aperture/clearance above belt: 44 in. W x 7 in. H. Baldor Industrial Motor, 1/2 hp, 1725 rpm, 230/460 V, 2/1 amps, 60 Hz, 3 phase. Browning Gear Reducer, 30.1 ratio, 57.3 rpm (final). Pallet Dispenser Pneumatic Scissor Lift, base dimensions: 36 in. L x 34 in. H. Pallet Stacker Control Panel with Allen-Bradley SLC 5/04 CPU Controls and Allen-Bradley SLC500 Power Supply. Pallet Stacker aperture/clearance: 6 ft. 4 in. L x 3 ft. 2 in. W x 5 ft. H. Girton CW10PS features include: Partial stainless steel construction, variable-speed conveyor that dispenses and carries pallets through in vertical positions, automatic steam temperature controls and thermometer for delivery of water at consistent temperatures. Side access door allows easy entrance for cleaning and inspection. The Series 5000 is a heavy duty, versatile, stand alone unit that separates individual pallets before dispensing for single conveying or indexes full stacks of pallets for accumulation conveying. The Series 5000 also gently dispenses pallets onto floor for easy access by pallet jacks and forklifts. Overall dimensions: 41 ft. 8 in. L x 12 ft. W x 8 ft. 2 in. H.











1997 Productive Automated Systems Corporation Pallet Dispenser / Pallet Stacker.





