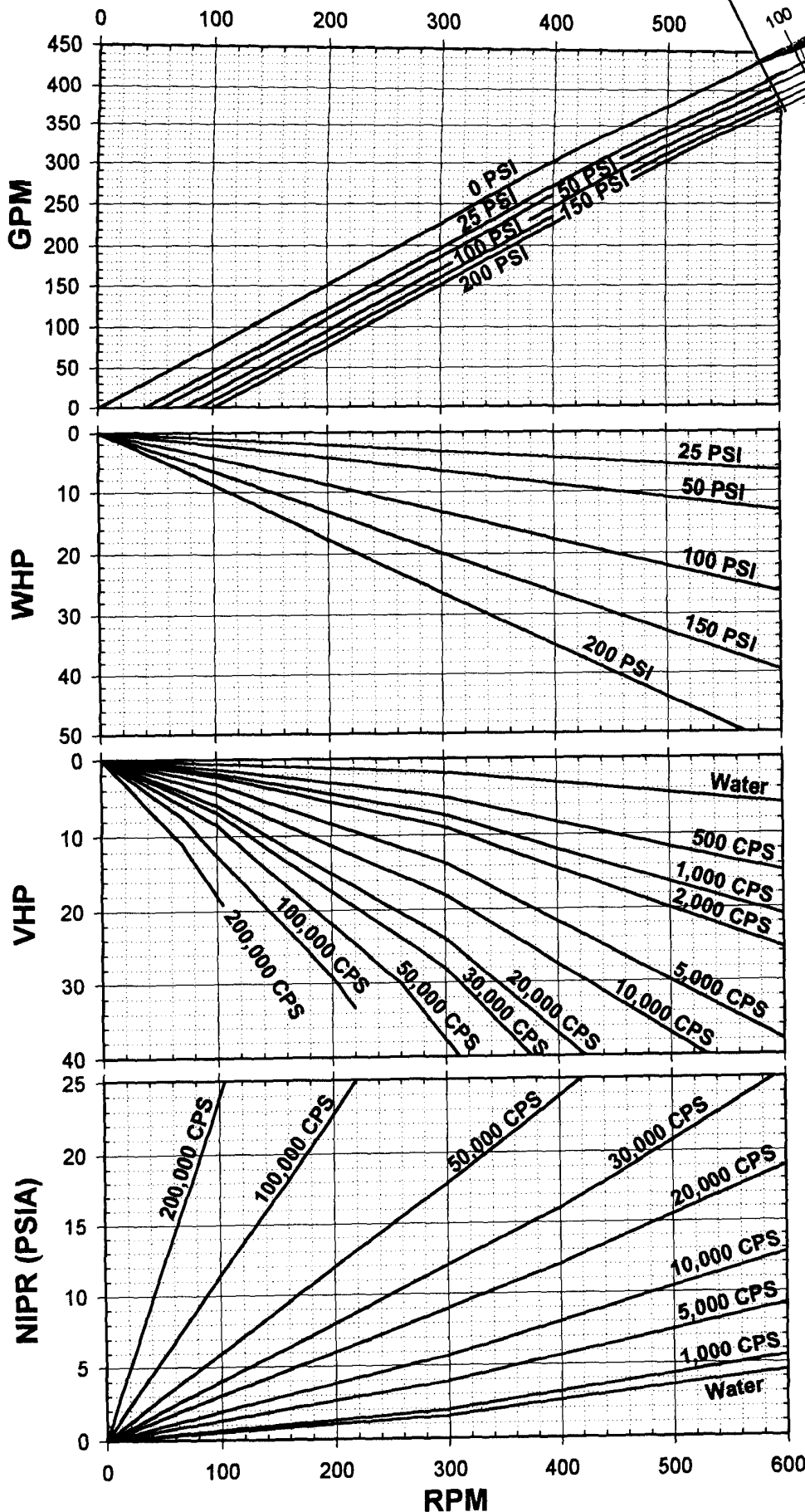


Capacity / WHP / VHP / NIPR



Universal I Sanitary Pumps Model

320

Alloy 88 Rotors
Standard Clearance
Standard Port Size = 6.0"
Displacement =
0.754 Gal/Rev

$$\text{BHP} = \text{WHP} + \text{VHP}$$



**Waukesha
Cherry-Burrell**

611 Sugar Creek Road
Delavan, WI 53115 USA
Tel: 1-800-252-5200 or 262-728-1900
Fax 1-800-252-5012 or 262-728-4904
E-mail: custserv@gowcb.com
Web Site: <http://www.gowcb.com>

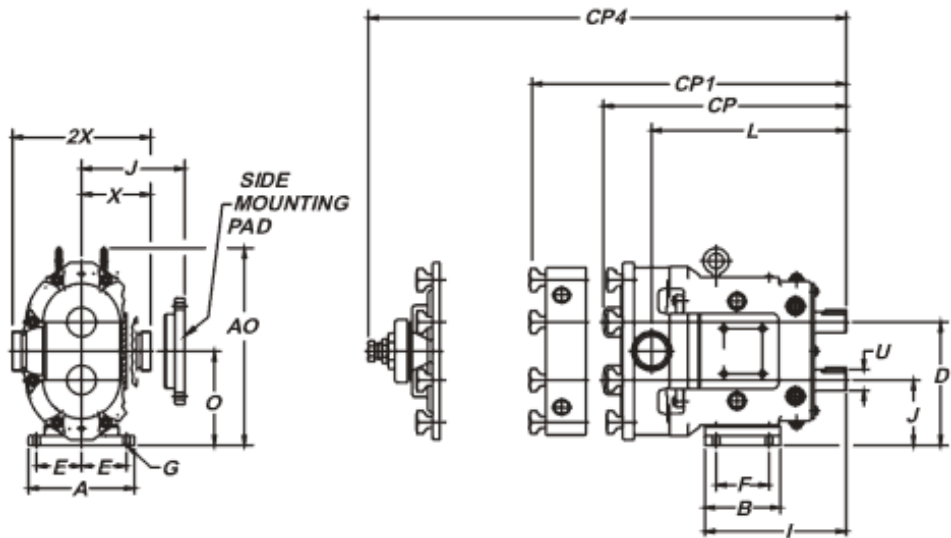
Effective Date: 3-14-2000
Specifications subject
to change without notice

Curve Number
95-07140

Waukesha Cherry-Burrell Products: Universal I Series PD Pumps - Model 320-UI

0-600 RPM speed range. 6", 150# flanged port size; suitable to 200 PSI (13.8 bar) differential pressure. Temperature range -40°F (-40°C) to 300° F (149°C).

NOTE: Contact [Application Engineering](#) for higher pressure or higher temperature applications. For higher pressures, refer to [WCB Universal II Series Pumps](#) and WCB [Pump Notes, PN 12-99](#).



	A	AO	B	CP	CP1	CP4	D	E	F	G	I	J	L	O	U	X	2X
IN	12.00	22.38	11.63	30.17	--	--	13.88	5.25	8.00	.66	17.80	6.88	21.92	10.38	2.375	8.00	16.00
MM	305	568	295	766	--	--	353	133	203	17	452	175	557	264	60.45	203	406

CP= Standard Cover, CP1= Jacketed Cover, CP4= Manual Vented Cover, Connection sizes for Jacketed Covers are ¾"-14 NPT on Models 006-UI to 030-UI, 1"-11-½ NPT on Models 060-UI and 130-UI.

Dimension 'X' and '2X' apply for Bevel Seat, "S"-Clamp, "Q"-Clamp, 15I and 14I fittings.