

## Ingersoll-Dresser Centrifugal Pump

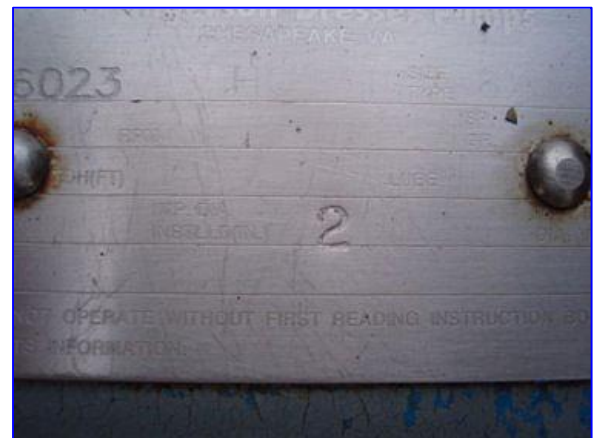
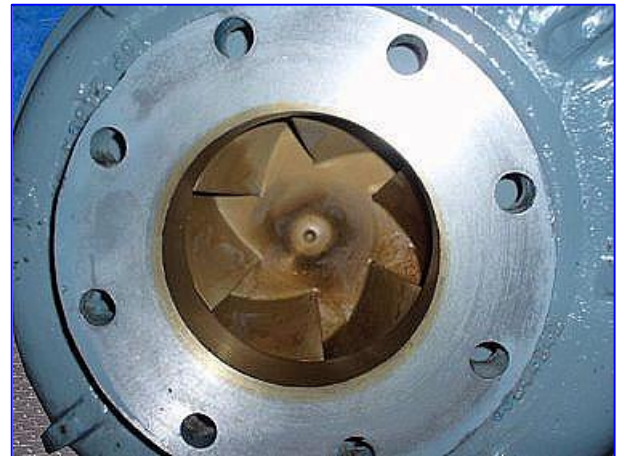
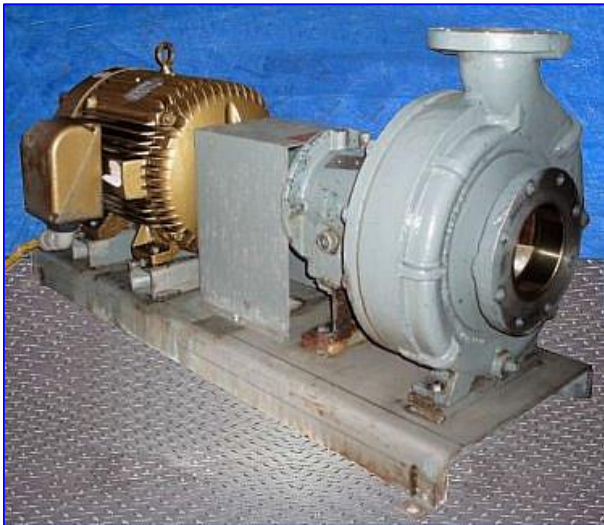
Mfg: Ingersoll-Dresser

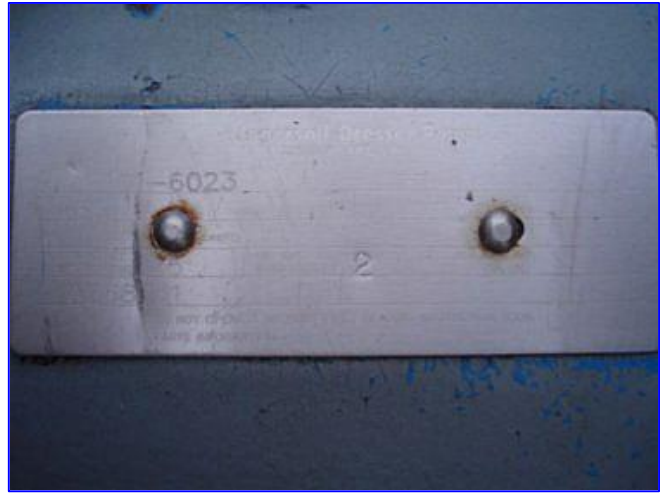
Model:

Stock No. DTTC2048.

Serial No. 0101-6023 H0C3+

Ingersoll-Dresser Centrifugal Pump. S/N: 0101-6023 H0C3+. Size: 6x4x13. Ref. No: A268761. Mat'l: SS. Impeller diameter: 12. Maximum impeller size: 13. Maximum design pressure: 275 psig. Baldor Super E Motor, 50 hp, 1775 rpm, 230/460 V, 114/57 amps, 60 Hz, 3 phase. Inlets: (1) 6 in. dia. flanged port. Outlet: (1) 4 in. dia. flanged port. Overall dimensions: 4 ft. 10 in. L x 2 ft. 3 in. W x 2 ft. 4-1/2 in. H.





**Super-E**  
SUPER EFFICIENT INDUSTRIAL MOTOR  
**BALDOR** FT. SMITH, AR. MFG. IN U.S.A.

CAT. NO.	525112T		
SPEC.	TECH SPEC 5700		
HP	1/2		
VOLTS	230/460		
PHAS	1/2/3		
R.P.M.	1725		
FRAME	52511	HZ	480
SER. F.	111	CODE	1
NEMA NOM. EFF.	86.5	P.F.	87
RATING	400 WATT		
CC	USABLE AT 208V		12 A
BEARINGS	DE 5212	ODE	5211
ENCL.	1000	SN	20102070050

UL