

Vilter Shell and Tube Chiller with Surge Drum

Mfg: Vilter

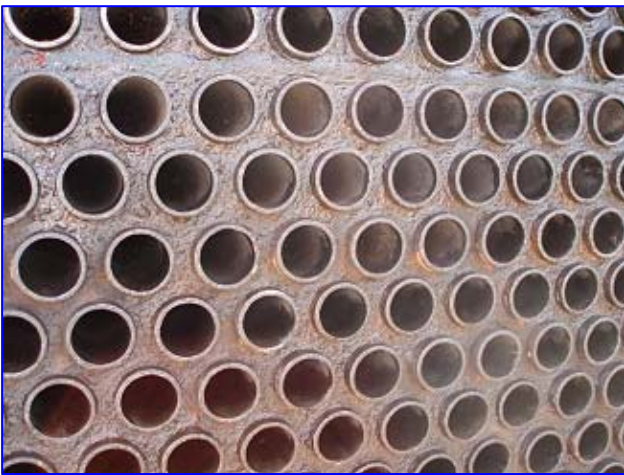
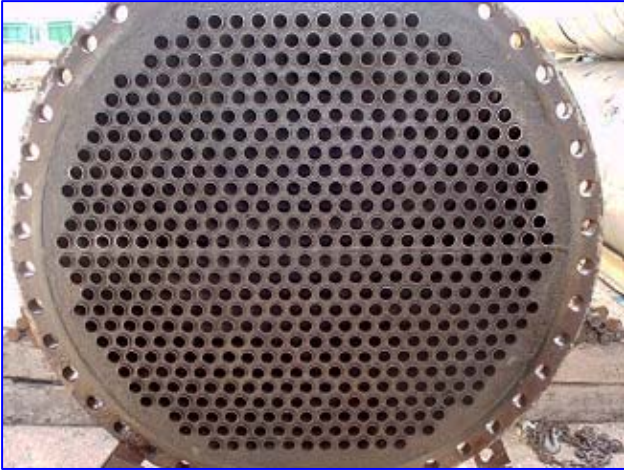
Model:

Stock No.: DTTC2057.

Serial No.: B-69146-1

Vilter Shell and Tube Chiller with Surge Drum. S/N: B-69146-1. Nat'l Bd: 11.270. Ins: LMC-11.270V. Tube material: A-214 carbon steel. Number of passes: 4. Number of tubes: 518. Tube dimensions: 11-1/4 in. dia. x 20 in. L. Heat transfer surface area: approx. 3,390 sq. ft. Tube volume: 420 gal. MAWP shell side: 200 psi @ 400 °F. Re-rated by Fru-Con Construction Corp., Nat'l Bd: 1173, Date altered: 9/2004. MAWP shell side: 80 psi @ -60 °F. Surge Drum- 615 gallons, inside straight-wall dimensions: 2 ft. 6 in. dia. x 16 ft. 11 in. L. Inlets: (1) 8 in. dia. flanged fitting, (4) 1-1/2 in. dia. ports, (2) 6 in. dia. ports. Outlets: (1) 8 in. dia. flanged fitting, (2) 2 in. dia. ports, (2) 2-1/2 in. dia. ports. Overall dimensions: 22 ft. 5 in. L x 5 ft. 8 in. W x 8 ft. 7 in. H.







REPORT OF INSPECTION FOR CAST IRON MANHOLE COVERS

1. Inspected by: [Name]

2. Inspected on: [Date]

3. Location: [Address]

4. Description of Work: [Details]

5. Findings: [List of observations]

6. Recommendations: [List of suggestions]

7. Inspector's Signature: [Signature]

8. Date of Report: [Date]



FRU-CON
CONSTRUCTION CORP.

REGISTERED BY: **FRU-CON**

CERTIFICATE HOLDER
HELL SIDE

M.A.W.P. 80 P.S.I.
AT - 60 OF.

1173
NATIONAL BOARD R
CERTIFICATE NUMBER

9-2004
DATE ALTERED



Note: the following pictures show the exact unit prior to removal.



