

FES Mycom Screw Booster Compressor Package-200 HP

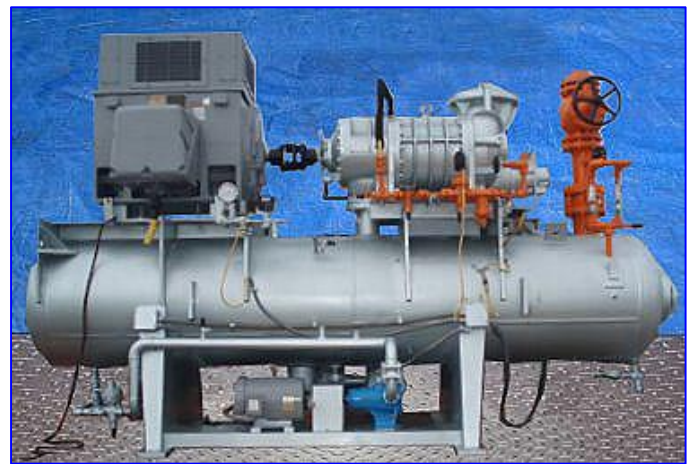
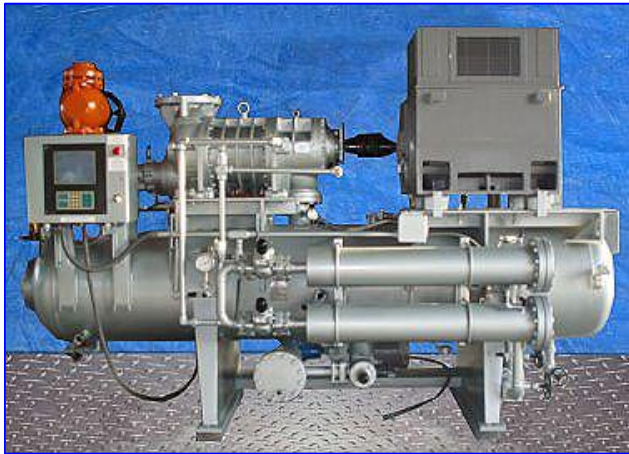
Mfg: FES Mycom

Model: 250 LU-L

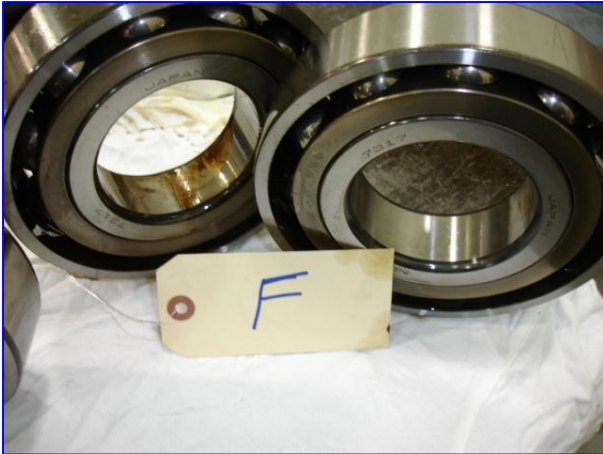
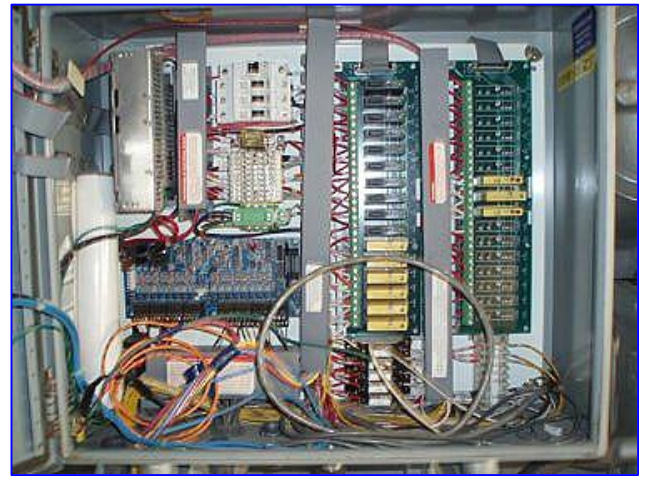
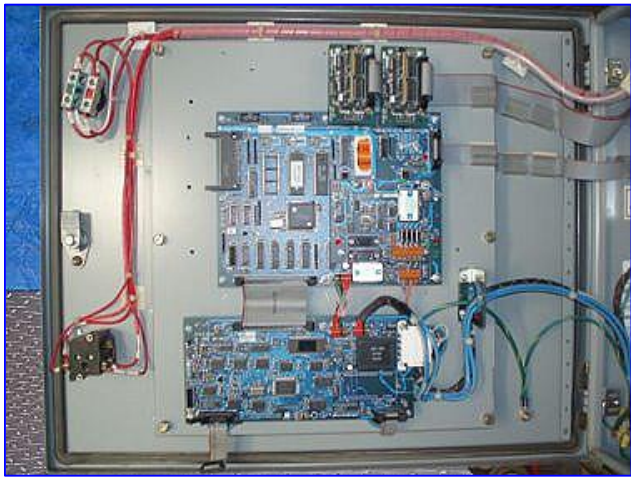
Stock No: DTTC801.

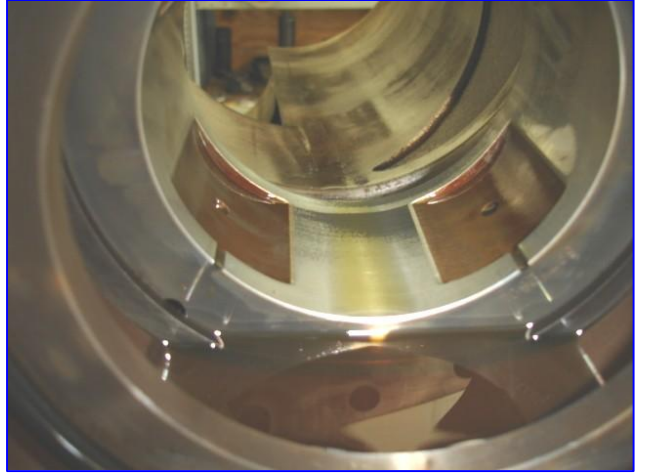
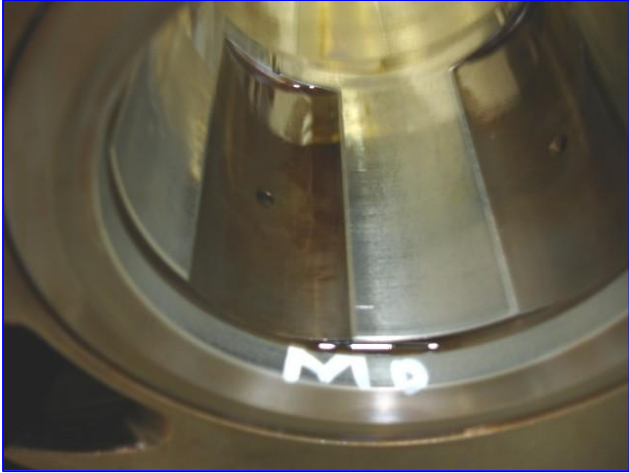
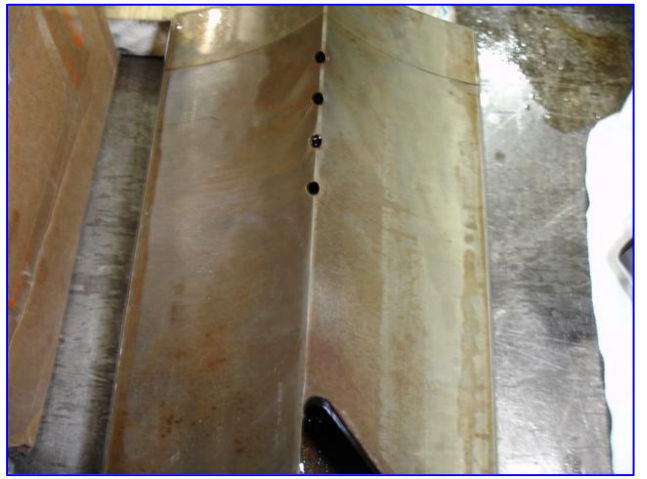
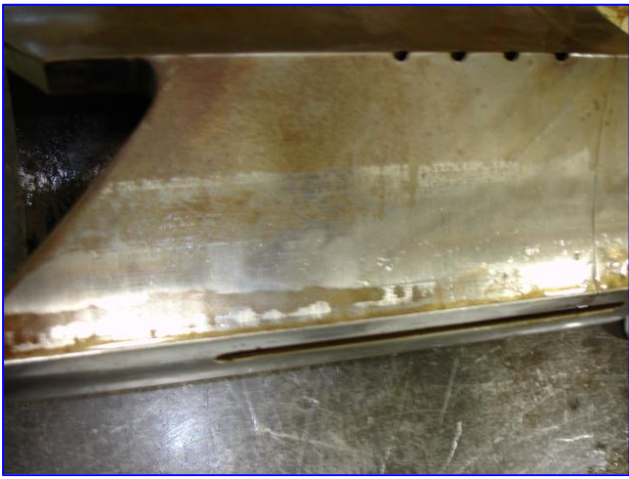
Serial No: 2511210

FES Mycom Screw Booster Compressor Package-200 HP. Model: 250 LU-L. S/N 2511210. Compressor capacity: 140.0 tonnage rating. Brake hp: 183.0. Brake hp per ton: 1.310. Vi Setting: 2.6. Leak test pressure: 313 psig. Hydrostatic test pressure: 470 psig. Suction pressure: 12 in. Hg @ -45°F. Discharge pressure: 33 psi @ 20 °F. FES Oil Separator, Natd Bd: 19931, maximum working pressure: 250 psi, maximum temperature: 650 °F, minimum allowable working temperature: -20 °F. General Electric Motor, 200 hp, 3570 rpm, 2400/4160 V, 45/26 amps, 60 Hz. 3 phase. Viking Rotary Pump, Model: AK 195. S/N: 11592894. Baldor Motor, 5 hp, 1180 rpm, 208-230/460 V, 11-15.8/7.9 amps, 60 Hz, 3 phase. Mycom Mypro-M controller. Inlets: (1) 16 in. dia. ammonia flange. Outlets: (1) 5 in. dia port. Overall dimensions: 13 ft. L x 4 ft. 10 in. W x 7 ft. 10 in. H. Hours run 33,120.









SCREW COMPRESSOR INSPECTION REPORT

Customer Tropicana Warranty / Service 560-22494

Compressor Type Mycom Model # 250 LU-L Serial # 2511210 X#

Customer Report and/or Complaint : _____

Analysis of Failure_____

Date of Inspection 8-31-05 Inspected by R.D.

TORQUES

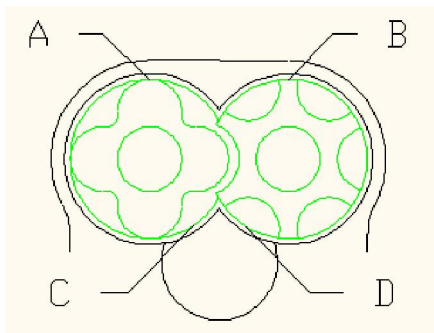
Outer Race (M) 44 FT/# Inner Race (M) _____

Outer Race (F) 44 FT/# Inner Race (F) _____

CLEARANCES

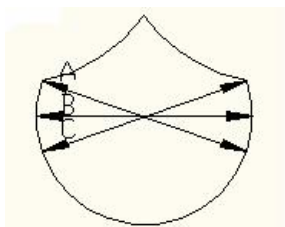
Axial Float (M) _____ Suction End (M) _____ Discharge End (M) .004

Axial Float (F) _____ Suction End (F) _____ Discharge End (F) _____ .004

Runout (Male Shaft) .001

(A) Male rotor to cylinder discharge end .038
(B) Female rotor to cylinder discharge end .035
(C) Male rotor to slide valve .003
(D) Female rotor to slide valve .0045

SLIDE VALVE



Suction End

(A) 6.5249
(B) 6.5255
(C) 6.5255

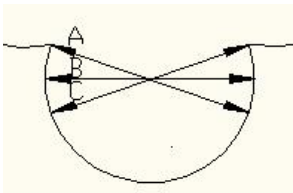
Discharge End

$$\begin{array}{r} 6.525 \\ \hline 6.5256 \\ \hline 6.5256 \end{array}$$

Slide valve VI 2.6

Double or Single hyd. Double

SLIDE VALVE CYLINDER



Suction End

(A) 6.5295
(B) 6.5275
(C) 6.5295

Discharge End

$$\begin{array}{r} 6.5325 \\ \hline 6.5280 \\ \hline 6.5305 \end{array}$$
SEAL INFORMATION:

☐ Dunham Bush ☐ Howden 8 _____ 8B _____ 9B _____

DRIVE RING CONDITION

MYCOM ☒ V-Ring Style ☐ BOS (V-series) ☐ FES

*SEAL CONDITION & JOURNAL DIAMETER OK 2.7559
 ROTOR CONDITION : (M) Discolored and Pitted
 (F) Discolored and Pitted
 ROTOR JOURNAL CONDITION: (M) OK Disc. 4.3295 Suct. 4.3295
 (F) OK Disc. 4.3291 Suct. 4.3292

GUIDE BLOCK WITH CLEARANCES : .0015 ☒ Standard ☐ Oversized
 GUIDE PIN CONDITION OK
 SLIDE VALVE CONDITION Some Wear CHROMED X METALIZED
 SLIDE VALVE SPINDLE OK

THRUST BEARING CONDITION THRUST BEARING RETAINER
 (M) Etched (M) OK
 (F) Etched (F) OK

SUCTION HEAD OK
 SUCTION SLEEVE BEARINGS (M) Slight Wear (F) Slight Wear
 DISCHARGE HEAD OK
 DISCHARGE SLEEVE BEARINGS (M) Slight Wear (F) Slight Wear

LIQUID INJECTION ANGLE 34° only
 UNLOADER PISTON & CYLINDER CONDITION OK
 END COVER INJECTION TUBE ASSEMBLY OK
 BALANCE PISTON & SLEEVE CONDITION W/CLEARANCES Sleeve Grooved .006
 INDICATOR ASSEMBLY CONDITION Replaced Glass & Support
 APPROXIMATE OPERATION HOURS
 FLANGES PRESENT:
 Suction Discharge

REMARKS:

SCREW COMPRESSOR BUILD SHEET

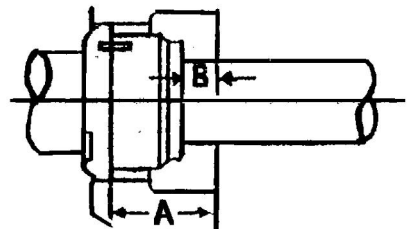
CUSTOMER Tropicana WARRANT/SERVICE # 560-22494
 REPAIR DATE 9-28-05 REPAIRED BY J.R.
 COMPRESSOR TYPE Mycom MODEL 250 LU-L SERIAL # 2511210

ASSEMBLED CLEARANCES:

MALE ROTOR: DISCHARGE .0034
 FEMALE ROTOR: DISCHARGE .0034
 RUNOUT .0004

D/B SEAL

A
 B



TYPE OF SEAL

D/B MYCOM
 8 CRANE

CAPACITY & LIQUID INJ.

SLIDE VALVE Vi 3.6

8B _____ MYCOM _____ ✓
9B _____ BOS _____

TABS BENT OVER _____ Yes _____

SLIDE VALVE TEST WITH AIR PRESSURE _____ OK _____

THRUST BEARING MANUFACTURE & SIZE: _____ Std. _____

PROBLEMS BUILDING MACHINE:

PARTS ADDED TO MACHINE:

SEAL PARTS

LOCKNUTS & LOCKWASHERS

THRUST BEARINGS

BALANCE PISTON & SLEEVE

PARTS MACHINED & METAL REMOVED:

BORE CYLINDER FOR OVERSIZED SLIDE VALVE

DISCHARGE HEAD Vi _____ 3.6 _____

LIQUID INJ. ANGLE _____ 34° _____

SLIDE VALVE STROKE _____ OK _____

LEAK TEST _____ OK _____

GASKETS & O-RINGS

GUIDE BLOCK & PIN

SLEEVE BEARINGS

METALIZE SLIDE VALVE