

FES/Mycom Screw Compressor Package-230 HP

Mfg: FES/Mycom

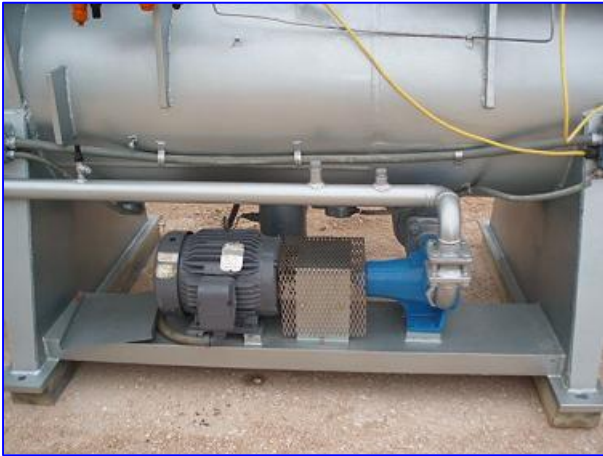
Model: 250LU-M

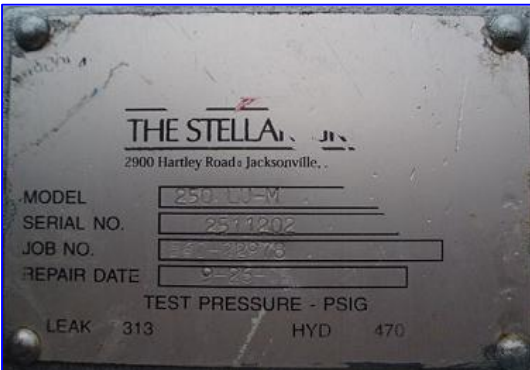
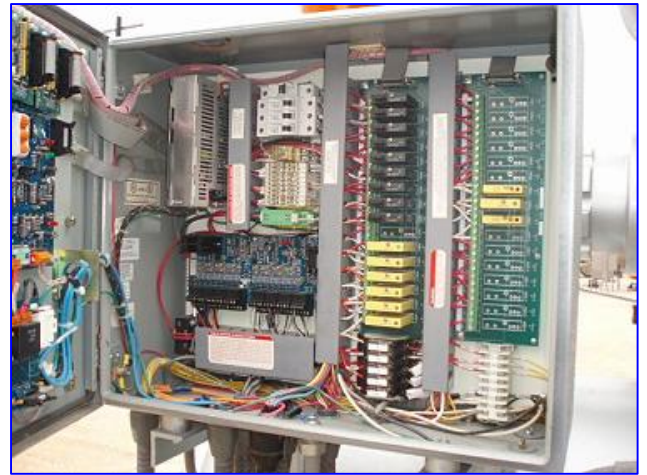
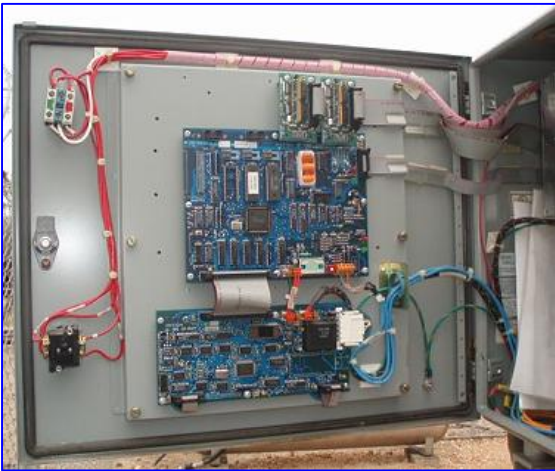
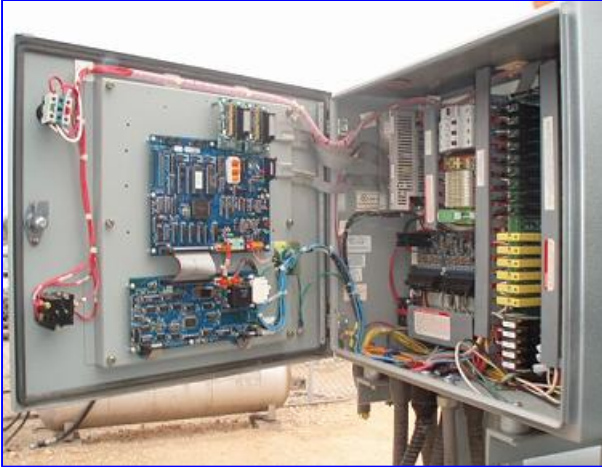
Stock No: DTTC802.

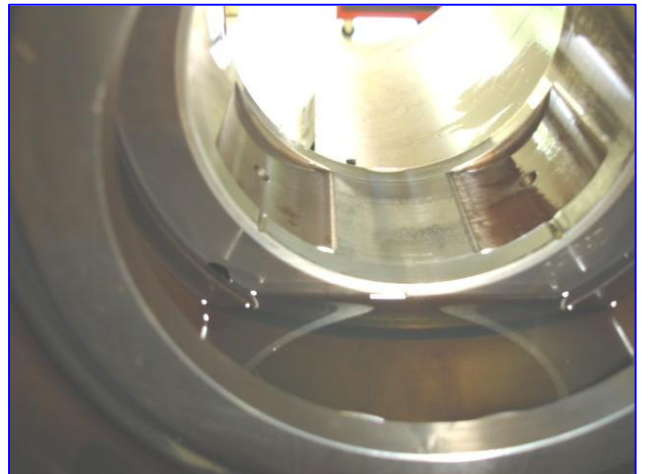
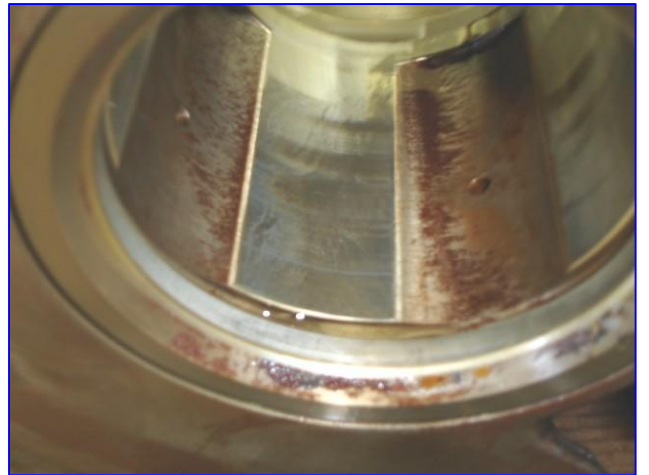
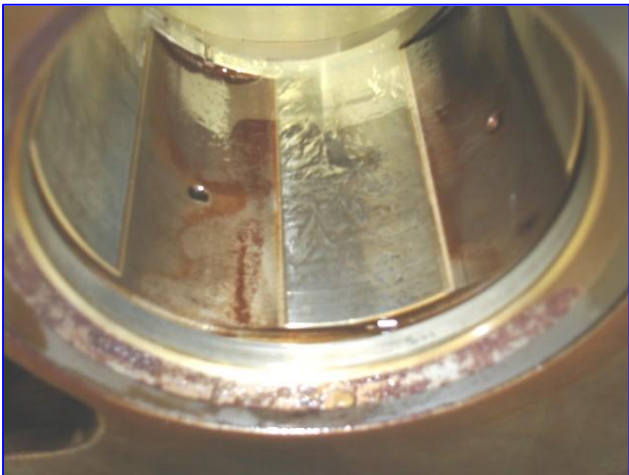
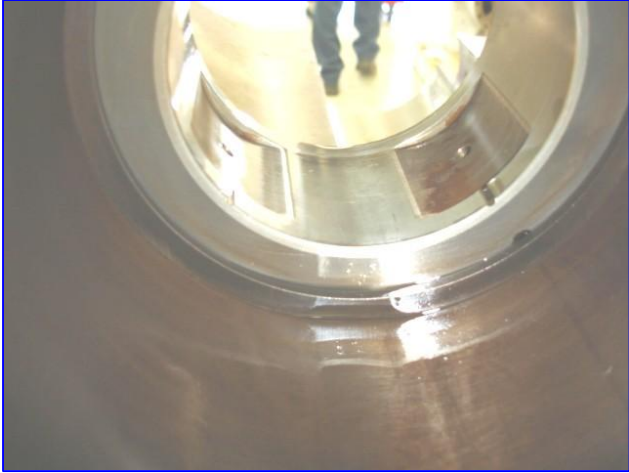
Serial No: 2511202

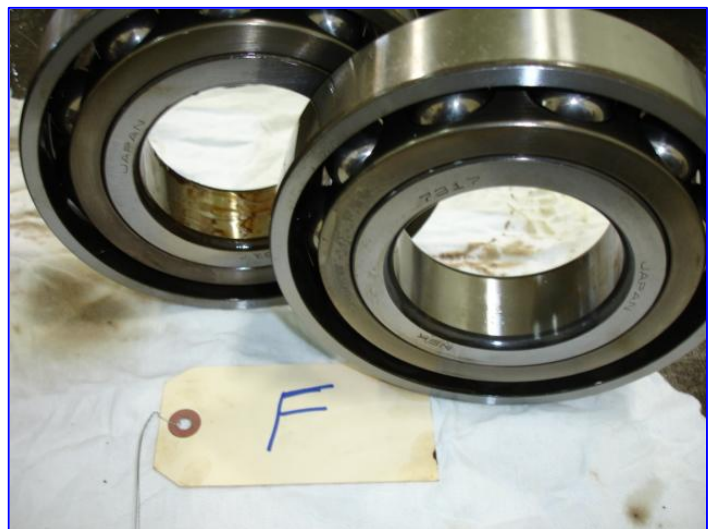
FES/Mycom Screw Compressor Package-230 HP. Model: 250LU-M. S/N: 2511202. Leak test pressure: 313 psig. Hydrostatic test pressure: 470 psig. Refrigerant: R-717. Suction pressure: 12 in. Hg @ -45°F. Discharge pressure: 33 psi @ 20 °F. Capacity: 140.0 TR. Brake hp: 183.0. Brake hp per ton: 1.310. General Electric Motor, 230 hp, 3570 rpm, 2400/4160 V, 45/26 amps, 60 Hz, 3 phase. Viking Pump, Model AK4195, S/N: 505702. Baldor Super-E Motor, 5 hp, 1160 amps, 230/460 V, 16/8 amps, 60 Hz, 3 phase. Mycom Mypro-M controller, 460 V. Inlets: (1) 12 in. dia. ammonia flange. Outlets: (1) 4 in. dia. port. Overall dimensions: 13 ft. 1 in. L x 57 in. W x 94 in. H.











SCREW COMPRESSOR INSPECTION REPORT

Customer Tropicana Warranty / Service 560-22978

Compressor Type Mycom Model # 250 LU-L Serial # 2511202 X#

Customer Report and/or Complaint :

Analysis of Failure

Date of Inspection 9-1-05 Inspected by B.M. & D.M.

TORQUES

Outer Race (M) 44 FT/# Inner Race (M) Tight

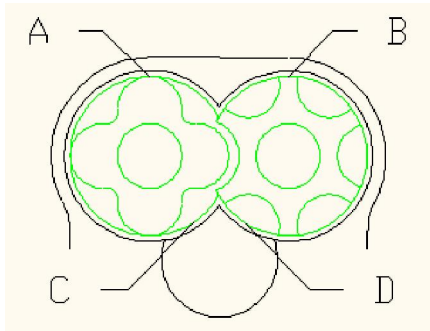
Outer Race (F) 44 FT/# Inner Race (F) Tight

CLEARANCES

Axial Float (M) Suction End (M) Discharge End (M) .0025

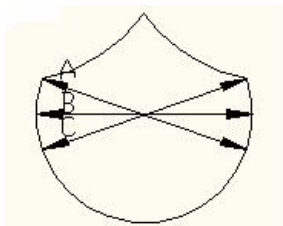
Axial Float (F) Suction End (F) Discharge End (F) .0025

Runout (Male Shaft) .001



- (A) Male rotor to cylinder discharge end .030
- (B) Female rotor to cylinder discharge end .030
- (C) Male rotor to slide valve .004
- (D) Female rotor to slide valve .004

SLIDE VALVE



Suction End

(A) 6.557

(B) 6.557

(C) 6.557

Discharge End

6.5575

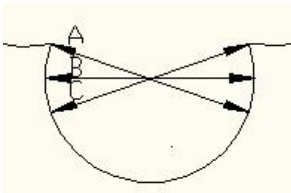
6.557

6.557

Slide valve VI 2.6

Double or Single hyd. Double

SLIDE VALVE CYLINDER



Suction End

(A)

(B) 6.562

(C)

Discharge End

6.565

6.563

6.565

SEAL INFORMATION:

Dunham Bush Howden 8 8B 9B

DRIVE RING CONDITION

MYCOM V-Ring Style BOS (V-series) FES

***SEAL CONDITION & JOURNAL DIAMETER** Pitted 2.750

ROTOR CONDITION : (M) Some Nicks - OK
(F) Some Nicks - OK

ROTOR JOURNAL CONDITION: (M) OK Disc. 4.3305 Suct. 4.3308
(F) OK Disc. 4.3305 Suct. 4.3305

GUIDE BLOCK WITH CLEARANCES : .002 Standard Oversized

GUIDE PIN CONDITION Loose

SLIDE VALVE CONDITION Some Wear **CHROMED** X **METALIZED**

SLIDE VALVE SPINDLE OK

THRUST BEARING CONDITION	THRUST BEARING RETAINER
(M) <u>Worn</u>	(M) <u>OK</u>
(F) <u>Worn</u>	(F) <u>OK</u>

SUCTION HEAD OK

SUCTION SLEEVE BEARINGS (M) Slight Wear (F) Slight Wear

DISCHARGE HEAD OK

DISCHARGE SLEEVE BEARINGS (M) Slight Wear (F) Slight Wear

LIQUID INJECTION ANGLE 34°

UNLOADER PISTON & CYLINDER CONDITION OK

END COVER INJECTION TUBE ASSEMBLY OK

BALANCE PISTON & SLEEVE CONDITION W/CLEARANCES .004

INDICATOR ASSEMBLY CONDITION OK

APPROXIMATE OPERATION HOURS N/A

FLANGES PRESENT:

Suction Yes Discharge Yes

REMARKS:

SCREW COMPRESSOR BUILD SHEET

CUSTOMER Tropicana

WARRANT/SERVICE # 560-22978

REPAIR DATE 9/23/2005

REPAIRED BY M.M.

COMPRESSOR TYPE Mycom MODEL 250 LU-L SERIAL # 2511202

ASSEMBLED CLEARANCES:

MALE ROTOR: DISCHARGE .0025

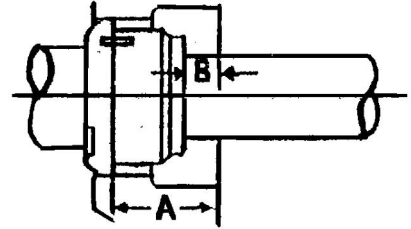
FEMALE ROTOR: DISCHARGE .0025

RUNOUT .0005

D/B SEAL

A _____

B _____



TYPE OF SEAL

D/B	MYCOM
8 _____	CRANE _____
8B _____	MYCOM <u>✓</u>
9B _____	BOS _____

TABS BENT OVER Yes

SLIDE VALVE TEST WITH AIR PRESSURE Yes

THRUST BEARING MANUFACTURE & SIZE: Std.

PROBLEMS BUILDING MACHINE:

PARTS ADDED TO MACHINE:

SEAL PARTS

LOCKNUTS & LOCKWASHERS

THRUST BEARINGS

BALANCE PISTON & SLEEVE

PARTS MACHINED & METAL REMOVED:

*BORE CYLINDER FOR OVERSIZED SLIDE VALVE
BALANCE ROTORS*

CAPACITY & LIQUID INJ.

SLIDE VALVE Vi 3.6

DISCHARGE HEAD Vi 3.6

LIQUID INJ. ANGLE Low Port

SLIDE VALVE STROKE N/A

LEAK TEST OK

GASKETS & O-RINGS

GUIDE BLOCK & PIN

SLEEVE BEARINGS

GLASS & SPACER - INDICATOR

*METALIZE SLIDE VALVE
METAL SPRAY SEAL AREA*