

Evapco Evaporative Condenser- 620 Ton

Mfg: Evapco

Model: PMC-620

Stock No. DTTC857.

Serial No. 868572

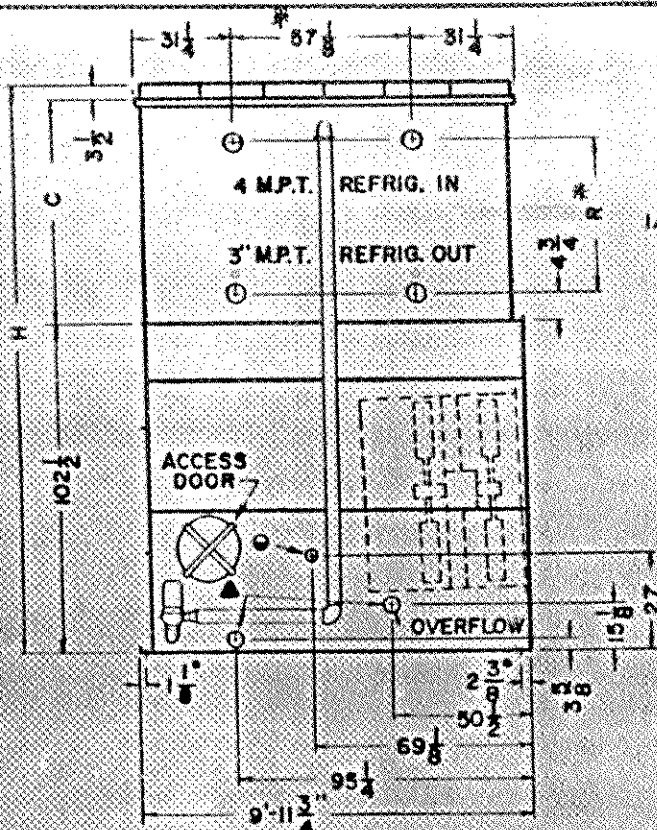
Evapco Evaporative Condenser- 620 Ton. Model: PMC-620. S/N: 868572. Belt No: 2B-116. Test pressure: 350 psig. PMC Evaporative Condensers are forced draft, axial fan models. The effective axial flow fans can reduce power requirements by up to 50% over centrifugal fan models of similar capacity. Easy to Install, Easy to Maintain and Easy to Operate. Centrifugal Pump with Marathon Electric Motor, 5 hp, 1740 rpm, 208-230/460 V, 14.8-14.4/7.2-10.4/5.2 FLA, 60 Hz, 3 phase. (3) 59 in. dia. fans. (2) Baldor Super-E Fan Motors, 10 hp, 1750 rpm, 230/460 V, 60 Hz, 3 phase. Inlets: (1) 4 in. dia. port. Outlets: (2) 3 in. dia. ports. Overall dimensions: 19 ft. 7 in. L x 10 ft. W x 14 ft. 6 in. H. (SR180).



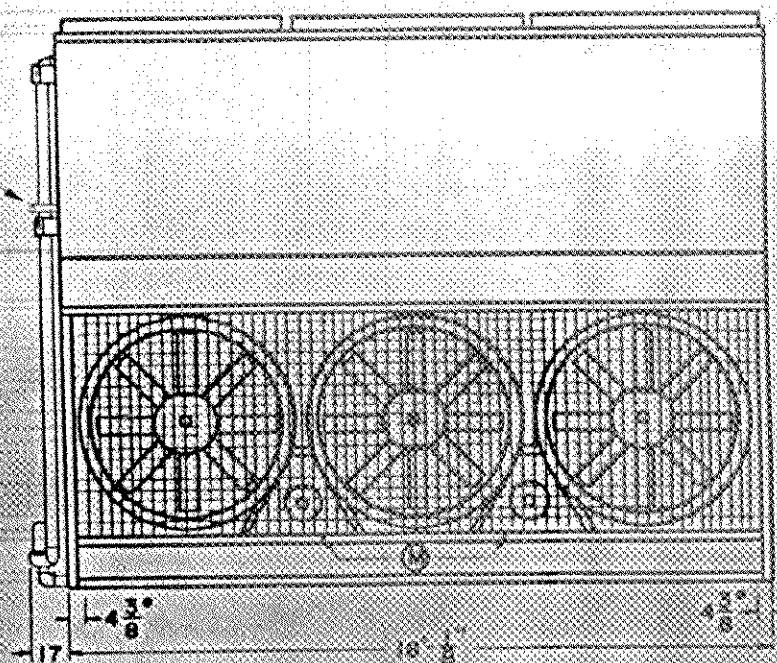








1/2" PURGE CONNECTION



NOTES:

- 3/4" MOUNTING HOLES
- 2 M.P.T. MAKE-UP (WATER PRESSURE: 20psi MIN., 60psi MAX.)
- ▲ 3" F.P.T. OVERFLOW AND 3" M.P.T. DRAIN
- ⊗ FAN MOTOR
- * APPROX. DIM. - DO NOT USE FOR PREFABRICATION OF CONNECTING PIPING

UNIT NO.	H	C	R
PMC-62DN	14' 7-3/4"	69-3/4"	37-7/8"

APPROX. WEIGHT	
SHIPPING	OPERATING
30,130	32,210



**evaporative
condenser**

REV:

DATE: 10/24/86

clg

CERTIFIED FOR: Industrial Refrigeration Services (Job: Tropicana Products, Inc.)
 CUSTOMERS ORDER NO: 001-115-01 EVAPCO NO: 868572
 CAPACITY: 4,674 MBH R-717 REFRIG 93° COND --- SUCT 80° W.B.
 FAN MOTOR (1) 20 & (1) 10 H.P. ELEC. SPEC. 230-460/60/3
 PUMP MOTOR (1) 5 H.P. ELEC SPEC. 230-460/60/3
 REMARKS To include 4" MPT inlet connections, 3" MPT outlet connections and
 1/2" purge connection. Drives sized for 0" ESP;