

Vanmark Corp Vertical Hydrolift Destoner with Auto Rock Remover

Mfg: Vanmark

Model:

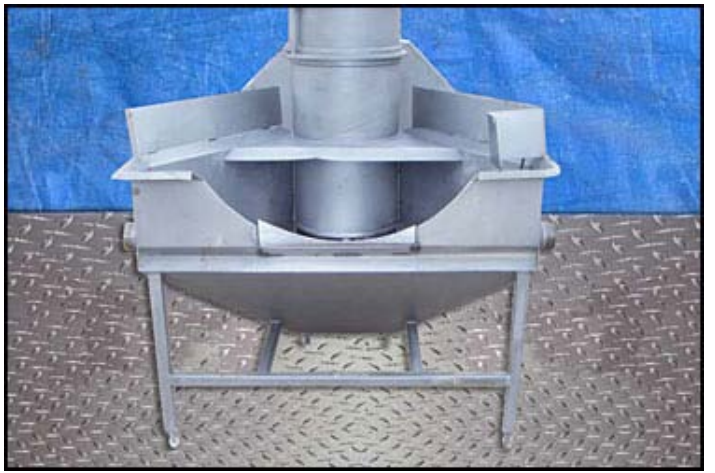
Stock No: DWKN03

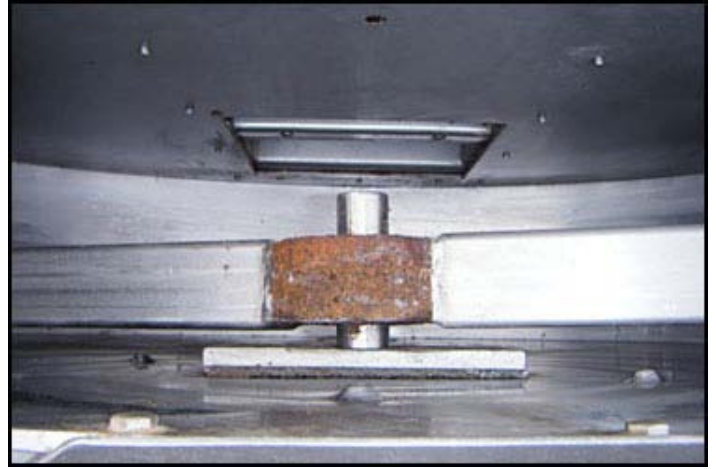
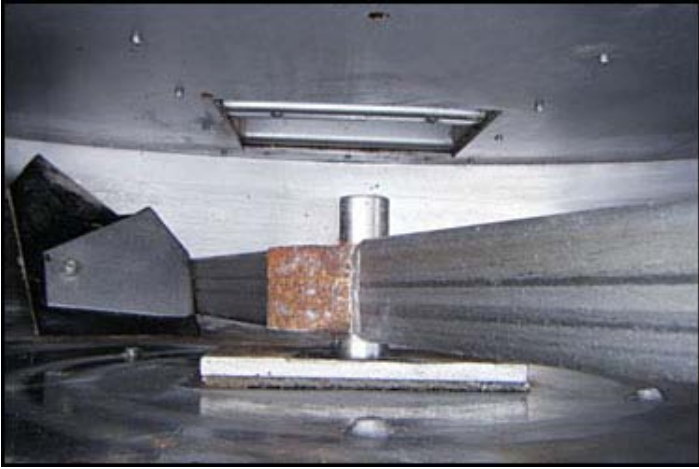
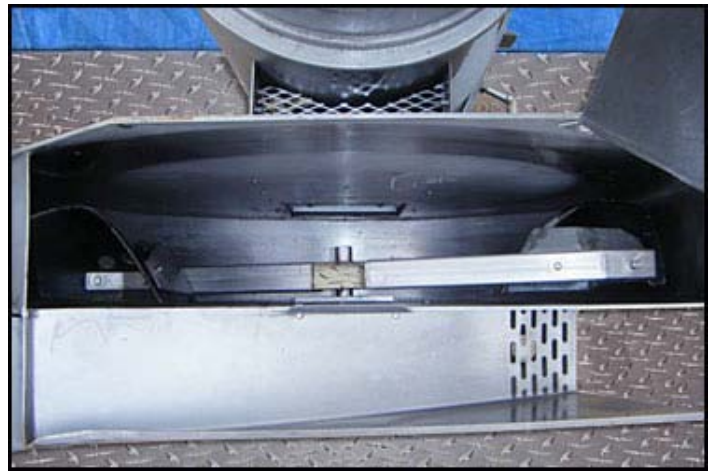
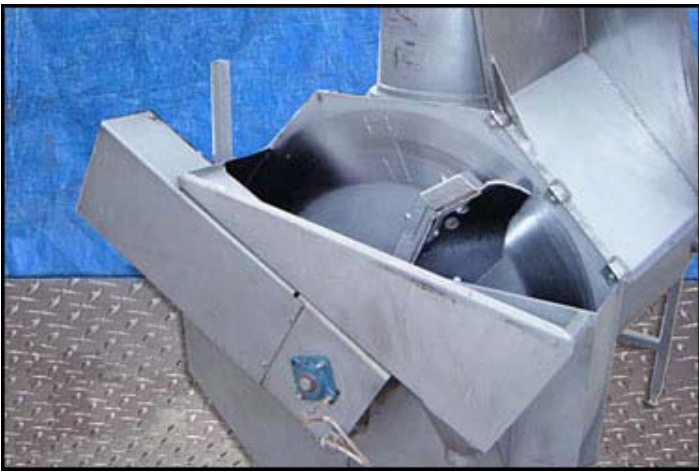
Serial No: M22-042685

Vanmark Corporation Vertical Hydrolift Destoner / Screw Auger Conveyor with Automatic Rock removal. S/N: M22-042685. Infeed hopper dimensions: 4 ft. L x 1 ft. 7 in. W. Screw auger dimensions: 1 ft. 3 in. dia. x 10 ft. 5 in. H. Based on the chute dimensions, this appears to be a model 2000. Reliance Electric Motor, 5 hp, 1750 rpm, 460 V, 6.6 amps, 60 Hz, 3 phase. Driver pulley diameter: 3 in. Driven pulley diameter: 1 ft. 7 in. Pulley ratio: 0.15. Final speed: 276 rpm. Automatic rock remover paddle dimensions: 3 ft. 9 in. dia. x 6 in. W. Reliance Electric Motor with Speed Reducer, 1/2 hp, 1725 rpm, 208-230/460 V, 1.7/.85 amps, 60 Hz, 3 phase. Inlets: (1) 1 ft. 4 in. W x 1 ft. 2 in. H. product infeed. Outlets: (1) 2 in. dia. FNPT rock remover port, (2) 2-1/2 in. dia. NPT overflow ports, (1) 4 in. dia. drain port, (1) 1 ft. 3 in. L x 1 ft. 2 in. W product discharge. Overall dimensions: 5 ft. L x 5 ft. W x 10 ft. 9 in. H. (GI).











RELIANCE ELECTRIC E-Z KLEEN PLUS TE IP56

1066302

| ID# | PS6X4706M | PH | FR | FB56C | TYPE | P | PH. 3 |
|-----|-----------|---------|---------|-------|------|------|-------|
| HP | RPM | VOLTS | AMPS | HZ | SF | CODE | |
| .50 | 1725 | 208-230 | 1.7-1.7 | 60 | 1.15 | J | |
| | | 460 | .85 | | | | |

200V MIN

WARNING

THIS MOTOR MUST BE EQUIPPED WITH A DIFFERENTIAL TO PREVENT CIRCUIT BREAKERS FROM OVERCURRENT TRIPPING. TO PREVENT CIRCUIT BREAKERS FROM TRIPPING, THE MOTOR MUST BE EQUIPPED WITH A DIFFERENTIAL TO PREVENT CIRCUIT BREAKERS FROM TRIPPING. TO PREVENT CIRCUIT BREAKERS FROM TRIPPING, THE MOTOR MUST BE EQUIPPED WITH A DIFFERENTIAL TO PREVENT CIRCUIT BREAKERS FROM TRIPPING.

CE

900-1-H

RELIANCE ELECTRIC E-Z KLEEN PLUS TE IP56

1066302

| ID# | PS6X4706M | PH | FR | FB56C | TYPE | P | PH. 3 |
|-----|-----------|---------|---------|-------|------|------|-------|
| HP | RPM | VOLTS | AMPS | HZ | SF | CODE | |
| .50 | 1725 | 208-230 | 1.7-1.7 | 60 | 1.15 | J | |
| | | 460 | .85 | | | | |

200V MIN

WARNING

THIS MOTOR MUST BE EQUIPPED WITH A DIFFERENTIAL TO PREVENT CIRCUIT BREAKERS FROM OVERCURRENT TRIPPING. TO PREVENT CIRCUIT BREAKERS FROM TRIPPING, THE MOTOR MUST BE EQUIPPED WITH A DIFFERENTIAL TO PREVENT CIRCUIT BREAKERS FROM TRIPPING.

CE

900-1-H

RELIANCE ELECTRIC DUTY MASTER XEX

1066302

IDENTIFICATION NO. MODEL NO. LBY H11PH03340G

HP 0.50 VOLTS 460 HZ 60 PHASE 3 CODE J

AMPS 1.7-1.7 AMB 40°C NEMA CLASS F

POWER FACTOR 79.7 MOTOR WEIGHT 124LBS.

1066302

PLANT (C) - U.S. FILE NO. E34823 MADE IN U.S.A.

DUTY MASTER IEEE-4

IDENTIFICATION NO. LBY H11PH03340-9

HP 0.50 VOLTS 460 HZ 60 PHASE 3 CODE J

AMPS 1.7-1.7 AMB 40°C NEMA CLASS F

POWER FACTOR 79.7 MOTOR WEIGHT 124LBS.

1066302

PLANT (C) - U.S. FILE NO. E34823 MADE IN U.S.A.

VARIABLE CORPORATION

Serial No. M22-042685