

CHERRY-BURRELL

CORRUGATED DOUBLE TUBE HEAT EXCHANGER

MODEL: 1 X 21 TF20 6/4-20'-304/316 SOFT

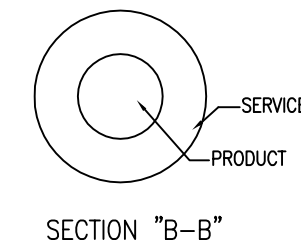
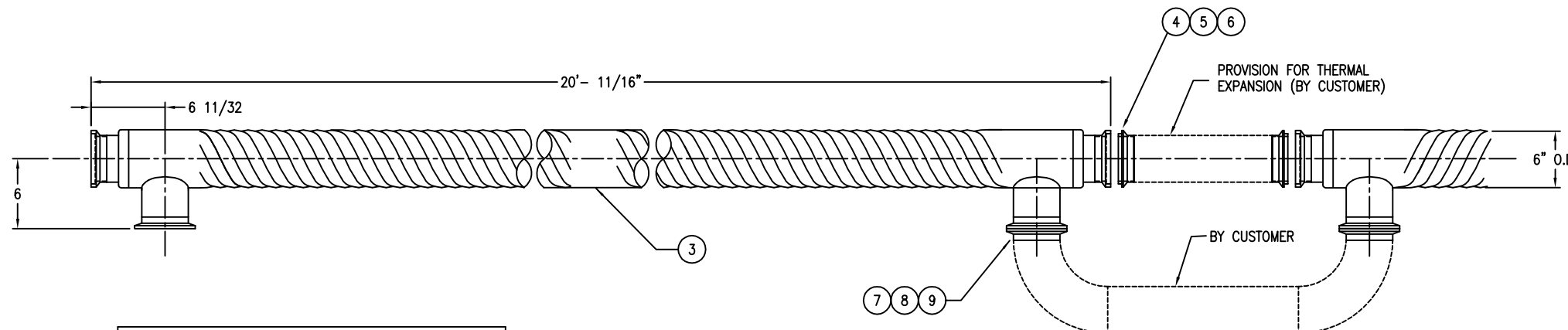
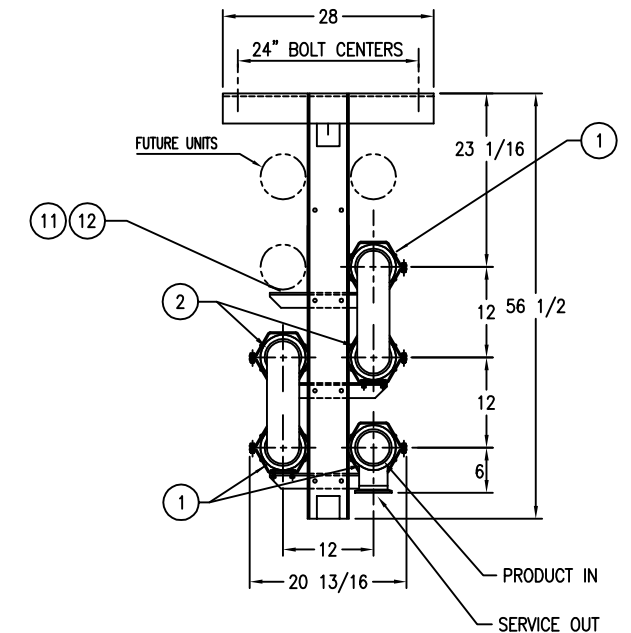
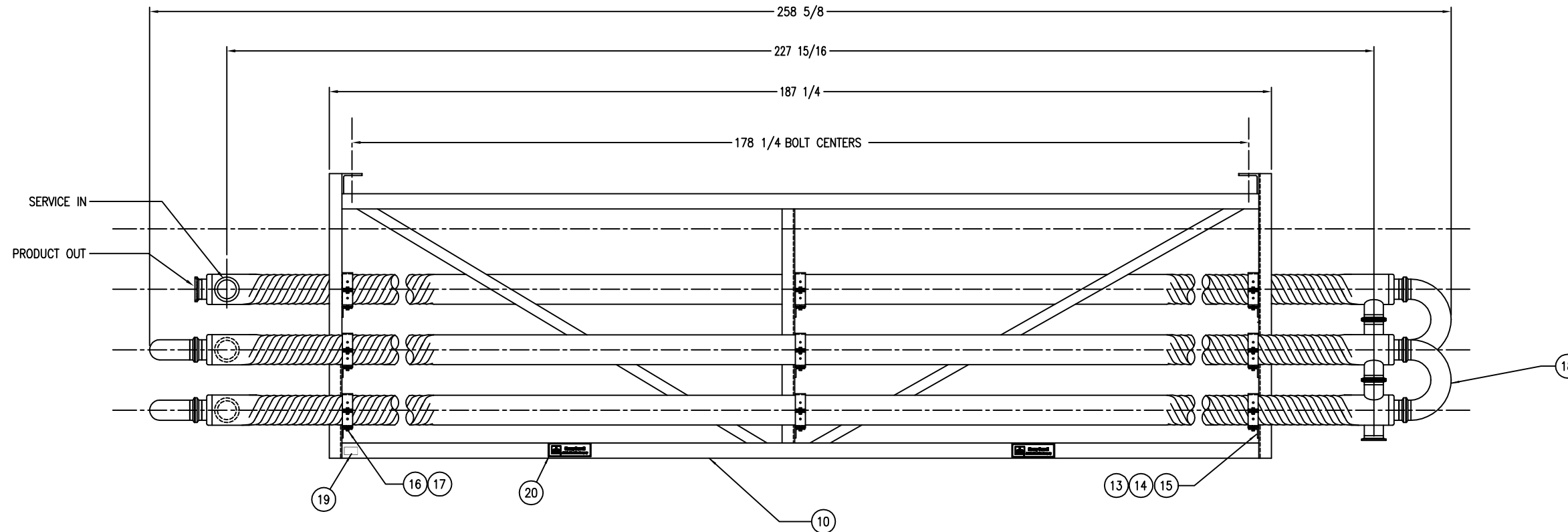
Serial No: 93251B A Drawing No: CT93251

DUTY			
FLUIDS:	FLOWRATE	TEMPERATURE	PRESS. DROP (psi)
CREAM OF CORN	56 GPM	80° - 180°F	85
HOT WATER	220 GPM	220° - 197°F	31
CREAM OF BROCCOLI	56 GPM	100° - 170°F	50
HOT WATER	220 GPM	220° - 203°F	31
BROCCOLI CHEESE	56 GPM	130° - 170°F	120
HOT WATER	220 GPM	220° - 211°F	31
CREAM OF CORN	90 GPM	80° - 180°F	118
HOT WATER	220 GPM	270° - 185°F	31
CREAM OF BROCCOLI	90 GPM	100° - 170°F	83
HOT WATER	220 GPM	220° - 197°F	31
BROCCOLI CHEESE	90 GPM	130° - 170°F	130
HOT WATER	220 GPM	220° - 206°F	31

MATERIAL OF CONSTRUCTION	
OUTSIDE SHELL:	6" - 316 STAINLESS STEEL POLISHED FINISH.
INSIDE TUBE:	4" - 316 STAINLESS STEEL POLISHED FINISH.
FRAME:	304 STAINLESS STEEL SQUARE TUBING

CONNECTIONS		
ITEM	SIZE	TYPE
PRODUCT:	4" 'I' LINE	
SERVICE:	4" 'S' LINE	

** WEIGHTS	
DRY WEIGHT	- 850
FLOODED WEIGHT	- 2020 LB
VOLUME OF PRODUCT	- 60 U.S.GAL.
PRODUCT	- 11.8 GAL/TUBE
SERVICE	- 15.05 GAL/TUBE
WEIGHT	- 169 LBS/TUBE



NOTE:
 TO ENSURE PROPER HEAT TRANSFER TO THE PRODUCT, IT IS IMPERATIVE TO CONNECT MEDIA FLUID IN A COUNTER CURRENT FLOW PATTERN TO THE PRODUCT FLOW AS DETAILED IN THE DRAWING.
 **WEIGHTS LISTED ABOVE DO NOT INCLUDE FRAME.
 5 HEAT EXCHANGERS LESS FRAME WEIGHT
 TUBE MOUNTING BRACKETS SHOULD BE LOOSE ON EACH END TO ALLOW TUBES TO SLIDE ON WEAR PLATES DURING OPERATION.

DESIGN DATA:		
	DESIGN PRESURE	TEST PRESSURE
TUBE SIDE	200PSI @ 200°F	300PSI @ 70°F
JACKET SIDE	150PSI @ 200°F	225PSI @ 70°F

<p>Cherry-Burrell Process Equipment • A United Dominion Company</p>	DRAWN BY: MDC ENGR: CMR CHECK BY: DATE: 11/4/93 SERIAL NO: 93251B A SIZE: D DRAWING NO: CT93251
	CAMPBELL SOUP CO.
	FOR:
	THE INFORMATION CONTAINED HEREON IS CONFIDENTIAL AND MUST NOT BE COPIED OR DISCLOSED TO OTHERS UNLESS AUTHORIZED BY CHERRY-BURRELL CORPORATION.

CHERRY-BURRELL CORP. 1000 BRANDEY AVE. LOUISVILLE, KY 40203 USA (603)961-4700