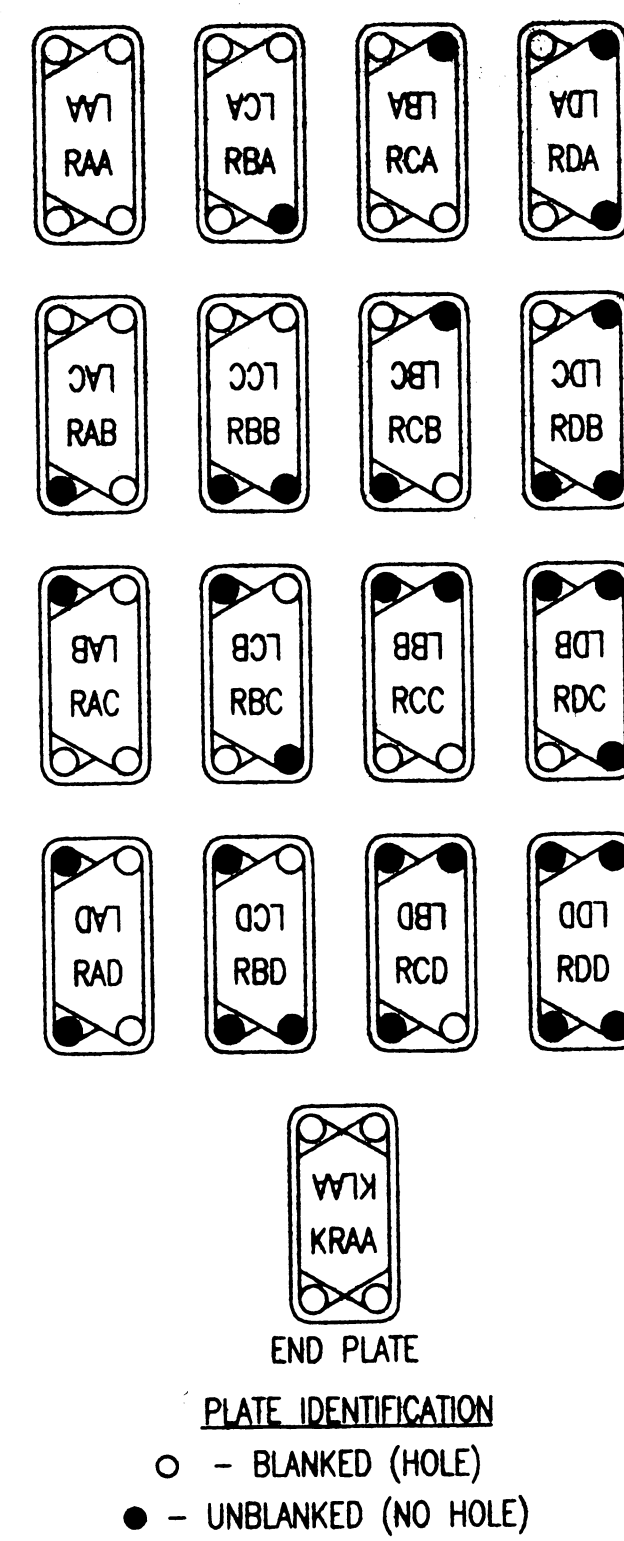


PLATES MUST BE ARRANGED ALTERNATELY LEFT AND RIGHT. FOR CONVENIENCE ON THIS DRAWING, WHERE BLOCKS OF RAA AND LAA PLATES OCCUR, THE TOTAL NUMBER OF EACH IS GIVEN.



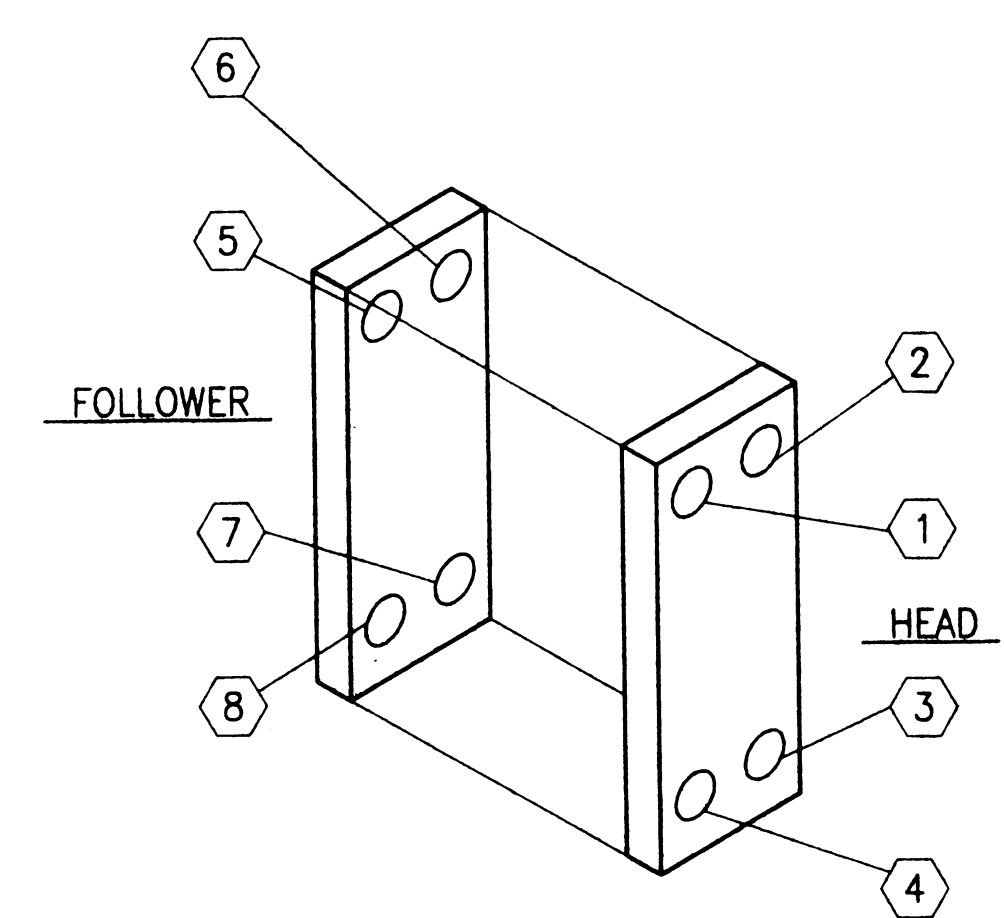
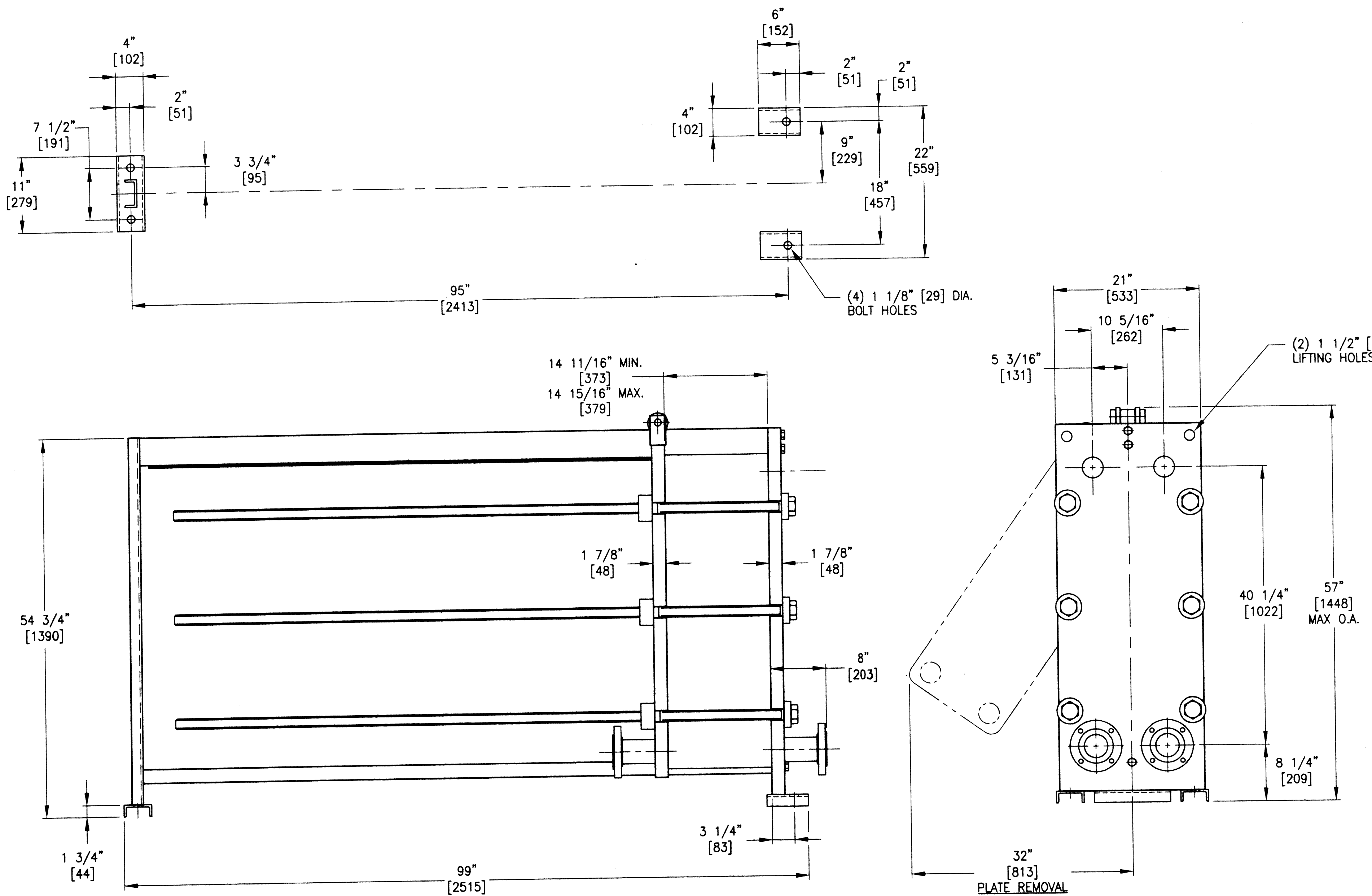
DESIGN SPECIFICATIONS	
DESIGN CODE	APV STANDARD
MAX. ALLOWABLE WORKING PRESSURE	150 PSIG.
MAXIMUM OPERATING TEMPERATURE	320° F.
SERIAL NUMBER	W.O. 27272
MINIMUM COMPRESSED PLATAGE	14 11/16"
MAXIMUM COMPRESSED PLATAGE	14 15/16"
HEAT TRANSFER AREA	326.2 SQ. FT.
FRAME SIZE	NO. 3
MAXIMUM FRAME CAPACITY	360 PLATES
DRY WEIGHT	2,060 LBS.
FLOODED (OPERATING) WEIGHT	2,295 LBS.
TOTAL LIQUID VOLUME	28.6 GALS.
FINISH	APV STANDARD PAINT SP3001
ACCESSORIES SUPPLIED	

PROCESS SPECIFICATION					
SECTION	FLOW RATE (LB/HR)	TEMP. IN (°F)	TEMP. OUT (°F)	ΔP (PSIG)	HEAT LOAD (BTU/HR)
85 GPM DUTY (HEATER)					
SPLASH	44,540	75.0°	215.0°	18.5	6,261,000
HOT WATER	110,000	220.0°	163.3°	15.4	
40 GPM DUTY (HEATER)					
SPLASH	20,960	75.0°	215.0°	4.6	2,733,000
HOT WATER	110,000	215.5°	190.8°	15.4	

FITTINGS DESCRIPTION			
SIZE	MATERIAL	TYPE	LOCATION
3"	316 S.S.	SCH.10S STUB END W/C.S. LWF (SEE NOTE 4)	ALL PORTS

PLATES AND GASKETS	
89 - SR3, 0.6mm TITANIUM PLATES.	
88 - SR3, EPDM FLOW GASKETS.	
1 - SR3, EPDM END GASKET.	
2 - SR3, TRIANGULAR SUPPORT PAD PAIRS (DENOTED AS "SP").	
2 - SR3, PORT RING GASKETS.	
TOTAL "L" PLATES - 44	TOTAL "R" PLATES - 45
38 : LAA/00	40 : RAA/50
1 : LAB/00	2 : RAB/50
1 : LAC/00	1 : RBC/50
2 : LBA/00	1 : SP/RCC/50
2 : LCA/00	1 : SP/KRCC/50

- NOTES**
- THE INSTALLATION, OPERATION AND MAINTENANCE OF THIS HEAT EXCHANGER SHALL BE IN ACCORDANCE WITH THE APV PARAFLOW PLATE HEAT EXCHANGER INSTRUCTION MANUAL.
 - THIS MODEL HEAT EXCHANGER IS TIGHTENED USING A WRENCH ON THE TIE BAR HEX NUTS AT THE HEAD AND FOLLOWER ENDS. CLEAN AND LUBRICATE THE THREADS BEFORE OPENING OR CLOSING USING A LUBRICANT COMPATIBLE WITH CARBON STEEL. APV RECOMMENDS NEVER-SLEEZ REGULAR GRADE. DO NOT USE COMMON GREASE. THE PLATE PACK IS TO BE TIGHTENED IN ACCORDANCE WITH THE INSTRUCTION MANUAL SUPPLIED. DO NOT TIGHTEN BELOW THE MINIMUM DIMENSION SHOWN.
 - THE CUSTOMER IS RESPONSIBLE FOR PROVIDING:
 - ANCHOR BOLTS PER ASTM A36 MINIMUM WITH A RECOMMENDED DIAMETER OF 1".
 - PROTECTION AGAINST START UP OR OPERATING PRESSURES EXCEEDING THE MAXIMUM ALLOWABLE WORKING PRESSURE.
 - PIPING TO THE FOLLOWER OR CONNECTOR GRIDS THAT ALLOWS FOR FREE MOVEMENT WHEN THE UNIT IS OPENED FOR SERVICE AND PROVIDES FLEXIBILITY FOR THE VARIATION OF THE COMPRESSED PLATAGE DIMENSIONS.
 - NOZZLES ARE PROVIDED WITH A SMOOTH RAISED FACE FINISH.
 - BOLT HOLES STRADDLE CENTERLINES SHOWN.
 - DIMENSIONS ARE SHOWN IN FEET-INCHES. DIMENSIONS IN BRACKETS [] ARE IN MILLIMETERS.
 - STANDARD TOLERANCES:
 - FRAME AND FOUNDATION BOLT LOCATIONS: ±1/4 INCH [±6mm]
 - NOZZLE CENTERLINE AND FACE DIMENSIONS: ±1/8 INCH [±3mm]



REV.	BY / DATE	CL. BY / DATE	DESCRIPTION AND LOCATION
F	CPM 3/12/98		RESTREAMED UNIT AND UPDATED DUTY
E	DJ NEFF 12/17/97	SSO 12/18/97	REMOVED COOLER SECTION, RESTREAMED HEATER AND REVISED DUTY.

Customer: **CAMPBELL SOUP PARIS, TX**

W.O. NO.: 27272

P.O. NO.: 0060008202 SALES ORDER NO.: 706159

APV Heat Transfer Technologies
395 Fillmore Avenue
Tonawanda, N.Y. 14150
Tel: (716) 692-3000/Fax: (716) 692-1715

APV

DESCRIPTION: **MODEL SR35 MOD.1 PLATE HEAT EXCHANGER**

Checked: Date: 6/27/97 Supercooled: 4.27272.0001-C Scale: N.T.S. Sheet: 1 OF 1

Approved: Date: 6/27/97 Drawn: Date: 6/25/97 Drawing No.: 4.27272.0001 Rev. F

CAD File: 27272D01