

Vilter VRS-1200 / Howden WRV255/1.10 Rotary Screw Compressor Package - 500 HP

Mfg: Vilter / Howden

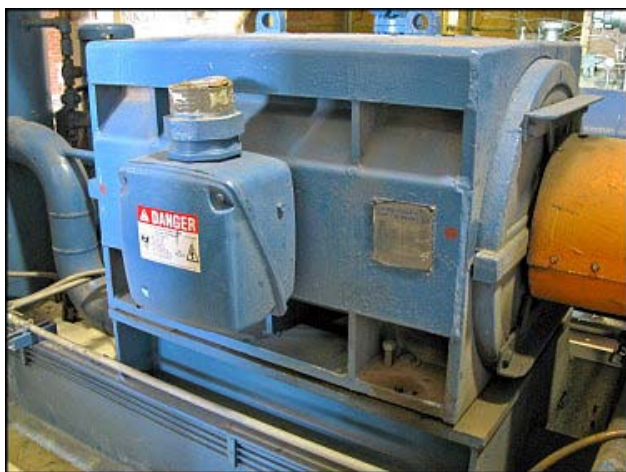
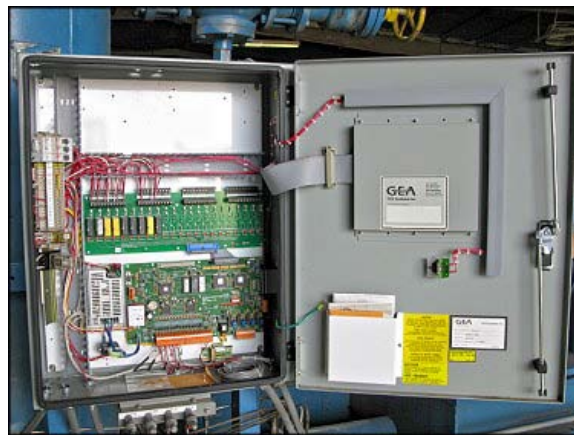
Model: VRS-1200/WRV255/1.10

Stock No: DWKN4001

Serial No: MK4C/WRV25511036/811

Vilter VRS-1200 / Howden WRV255/1.10 Rotary Screw Compressor Package. Model: VRS-1200/WRV255/1.10. S/N: MK4C/WRV25511036/81. Contract No: JH1629. Vilter order no. E-84907. Capacity rating: 409 tons at 466 BHP using R-717(ammonia) with suction temperature of 20°F / 33.5 psig and condensing temperature of 95°F and 181 psig. Fixed Vi setting: 3.6. Displacement: 1110 cfm. FES Systems, Inc. GEA Micro III retrofit control panel. FES contract/serial no. 02230104. Louis Allis Armor Line® Motor: 500 hp, 3555 rpm, 4160v, 65 amps, 60 Hz, 3 phase. Overall dimensions: 15 ft. 9 in. L x 5 ft. 2 in. W x 8 ft. 1 in. H.





GEA
Refrigeration Division

FES Systems Inc.

FES Contract No. 02230104

Model No. RETROFIT PANEL

Serial No. 02230104

Electrical Inspection by G. GORHAM

Date 5-22-02

York, PA USA
610-26214-000

Control Panel FLA 25
120 V - 1Ph - 60 Hz

HOWDEN[®]

Protected by UK patent No
627182 · 676889 · 832386 · 947382
966529
and corresponding patents abroad

Serial No MK4C/WRV255/11036/87

Contract No JH1629

HOWDEN
COMPRESSORS

Howden's 100 Barford Dr.

LOUIS ALLIS
ARMOR LINE MOTOR

MODEL		SERIAL	100014007
TYPE	1/2 HP		
H.P.	500		
VOLTS	240V		
HERTZ	60		
DRIVE			
WINDING			
CODE			
AMPS			

DIV

MAX. DES. PRESS.

P.S.I. AT

TUBE SIDE

DIVISION

MAX. DESIGN PRESS.

P.S.I. AT

S.N. No
SER. No
YEAR