

Hopmann WEP-Series Prefeeder

Mfg: Hopmann

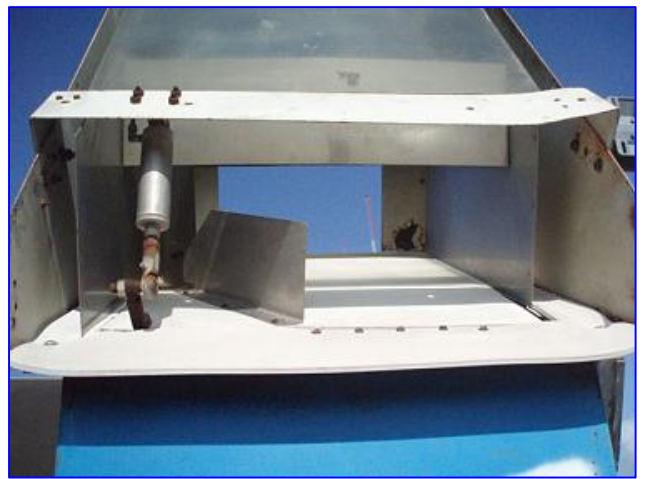
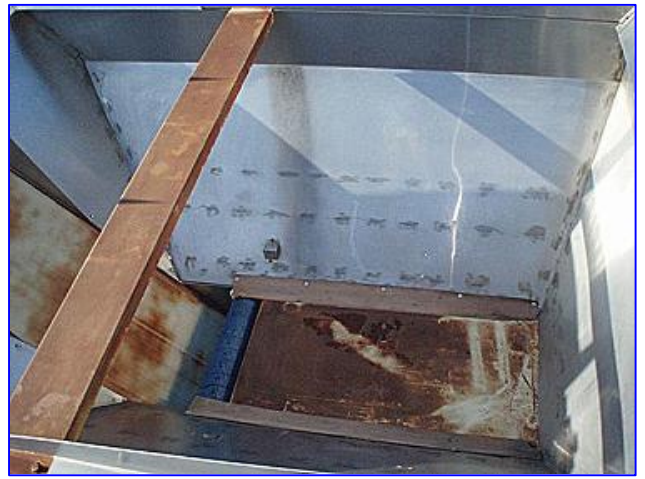
Model: WEP

Stock No. EQN6a.7a

Serial No. 3034

Hopmann WEP-Series Prefeeder. Model: WEP-80. S/N: 3034. Supply Hopper Capacity: 80 cu ft. Hopper infeed dimensions: 7 ft. 9 in. L x 6 ft. W. Boston Gear Incom DC Gearmotor, ½ hp, 1750 rpm, 90A/100/50F V, 3.2A/0.5/1.0F amps, single phase. Bodine Electric Company Gearmotor, 1/8 hp, 8.3 rpm (final), 130 VDC, single phase, 300 ratio. Uses a Polyflake belt model: BLT241101, dimensions: 110+L. x 24+W. x 1/8+H. The WEP-80, Prefeeder is designed to load large products into a feeder or other equipment for singulation and/or orientation. Outlets: (1) 21 in. L x 10 in. W. Overall dimensions: 11 ft. 9 ½ in. L x 6 ft. 9 ½ in. W x 8 ft. H.





Hoppmann Corporation

Automation/Communications/Hydroponics

Model	WEP	Series	80
Serial	3034	Date	6/86

14560 Lee Road Chantilly, VA 22021 Phone (703) 631-2700



