

APV Pasteurizing Skid with CIP Capability

Mfg: APV

Model: SR15

Stock No. FCCP001.130

Serial No.

APV Pasteurizing Skid with CIP Capability. Capacity: 10 gpm. APV Control Panel. Project No. 112-00756. Power supply: 230 V, 20 amps, 60 Hz, 3 phase. Anderson Chart Recorder ACR 700 Series. Model: 7101000002100W. S/N: 0220455. Power supply: 115 VAC, 50-60 Hz. Acme Transformer. Type: TA-2-81219. Power supply: 2000 VA, 50-60 Hz. Allen Bradley Circuit Breaker. Part No. 1492-GH100.

APV Sanitary Plate Heat Exchanger. Model: SR1 MGS-11. S/N: 20023003000369. Drawing No. 0200369 REV02. 1 divider. 2 sections. Number of Stainless steel plates: 62. Material of construction: 316. Gasket material: EPDM. Heat transfer surface area: approx. 53.4 sq. ft. MAWP: 150 psig @ 195 °F. Inlets/outlets: (11) 1-1/2 in. dia. S-line fittings.

Dunkirk Hot Water Boiler. Model: 3EW.752. S/N: 420100100. Input: 105 MBH. Heating capacity: 92 MBH. I=B=R Net Rating: 80 MBH. Capacity: 0.75 gph @ Firing Rate (I=B=R INPUT). Inlets/outlets: (2) 2 in. dia. NPT fittings.

Stainless Steel Balance Tank-30 gallons. Material of construction: 304 SS. Inside straight wall dimensions: 18 in. dia. x 2 ft. 2 in. H. Inlets: (4) 1-1/2 in. dia. S-line fittings. Outlets: (1) 1-1/2 in. dia. S-line fittings. Overall dimensions: 22 in. dia. x 2 ft. 4 in. H.

316 APV Sanitary Centrifugal Pump. Model: W+10/08. S/N: 100270816. Impeller diameter: 3-1/2 in. Reliance Electric Motor, 3/4 hp, 3450 rpm, 230/460 V, 2.2/1.1 amps, 60 hz, 3 phase. Inlets/outlets: (2) 1-1/2 in. dia. S-line fittings.

316 APV Sanitary Centrifugal Pump. Model: W+22/20. S/N: 100270941. Impeller diameter: 5 in. Reliance Electric Motor, 2 hp, 3450 rpm, 230/460 V, 5.0/2.5 amps, 60 Hz, 3 phase. Inlets/outlets: (2) 2 in. dia. S-line fittings.

Holding tube-5 gallons. Tube diameter: 1-1/2 in.

E-Trac AC Inverter. Model: XFC2003-0C. Type: 4.4X &12k. Input: 208-230V, 10.4 amps, 3 phase. Output: 3 hp, 3.5-230 V, 10.6 amps.

ITT Bell & Gossett In-line Air Separator. Model: 1AS-1-1/2. Part No. 112097. MAWP: 175 psig. MAWT: 300°F. Inlets/outlets: (2) 1-1/2 in. dia. NPT fittings.

Armstrong Air Vent. Model: 11 AV. MAWP: 500 psig @ 100° F. Max differential pressure: 178 psi.

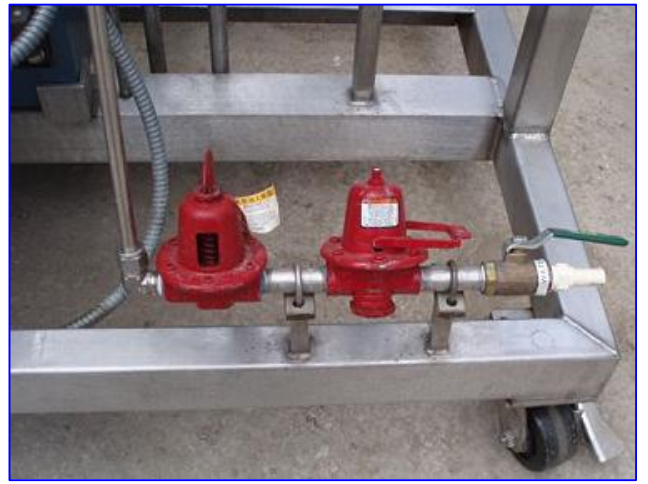
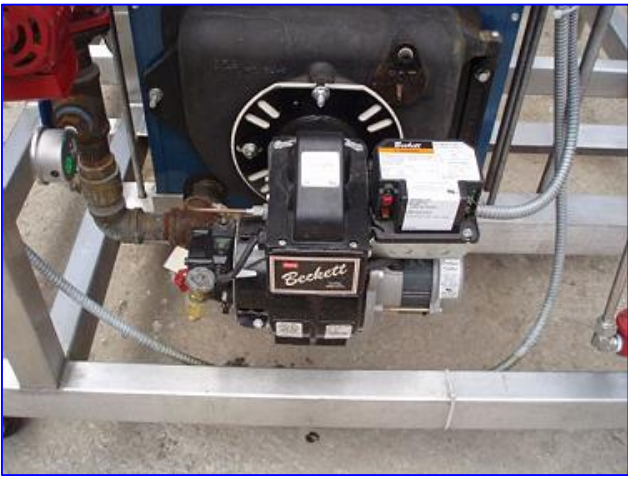
Beckett Corp. Oil Burner. Model: AFG. S/N: 010920-64196. Capacity: 0.50-3.00 gph. Power supply: 120 V, 5.8 amps, 60 Hz.

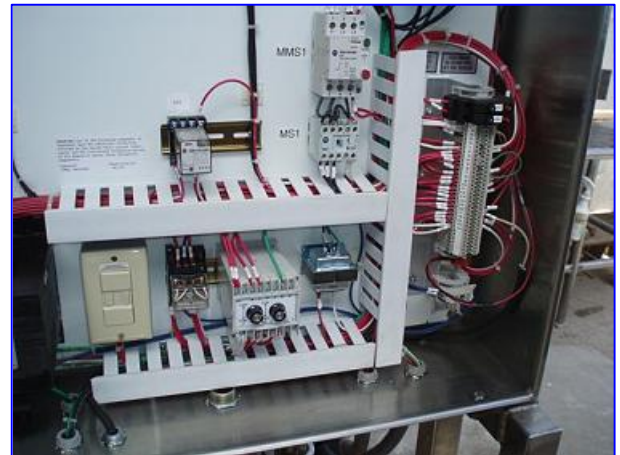
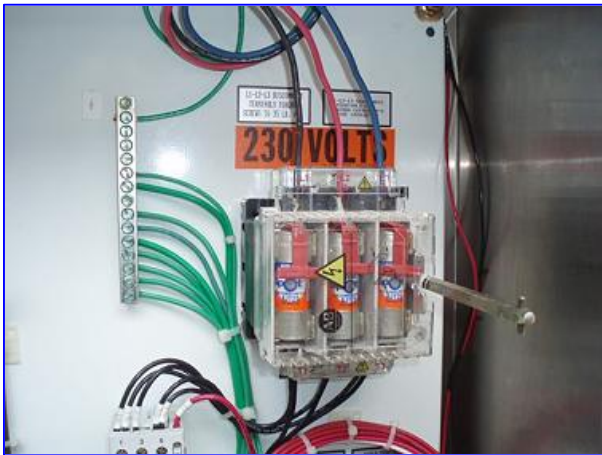
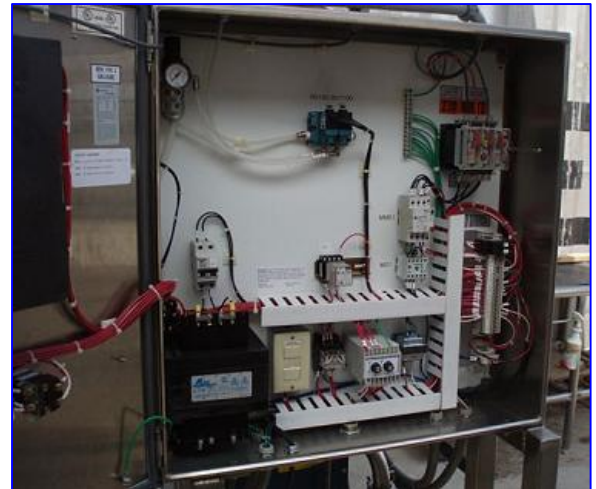
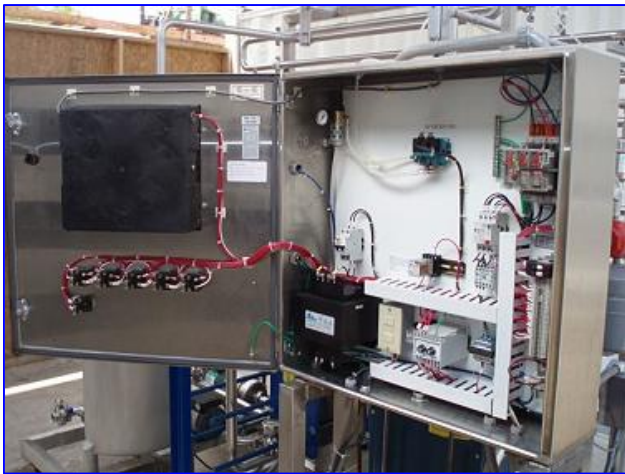
Inlets: (1) 1-1/2 in. dia. S-line fittings (product in), (1) 1-1/2 in. dia. (chilled water). Outlets: (1) 1 in. dia. S-line fittings (product out), (1) 1 in. dia. S-line fittings. (chilled water).

Overall dimensions: 9 ft. 7 in. L x 4 ft. 6 in. W x 9 ft. H.

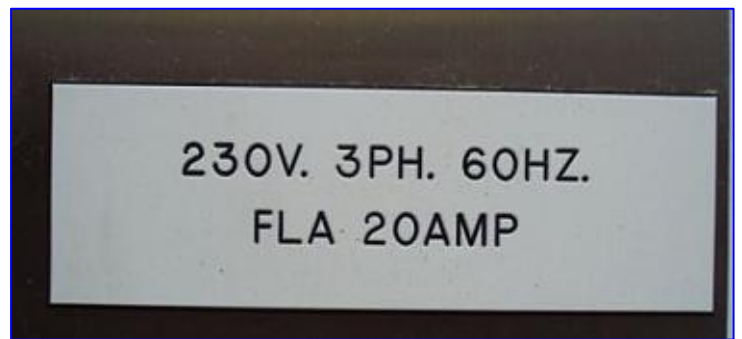












TB Wood's

XFC2003-0C
MICRO-INVERTER
TYPE 4.4X & 12K

INPUT	OUTPUT (CONT)
VOLTS: 208-230 ±10%	HP: 3
50/60HZ 3PH	VOLTS: 3.5-230
AMPS: 10.4	AMPS: 10.6
KVA: 3.7-4.1	KVA: 4.2

UL LISTED Inc. Cont. Eq. 66D8 TB Wood's Incorporated Chambersburg, PA Made in U.S.A.

Allanson ELECTRONIC IGNITION
INTERNATIONAL INC. TRANSFORMER

CAT No. **2275 - 628A**

PRIMARY 120v 50/60Hz 86.5VA
SECONDARY 17.5 KV pk 45mA
SEC. MID-POINT GROUNDED
CENTRE DE L'ENROULEMENT
HAUTE TENSION MIS A LA TERRE

0801
10
MADE IN CANADA
PATENT PENDING

Model "AFG"
Series Oil Burner

SERIAL NUMBER
010920 - 64196

0.50 - 3.00 GPH 120V/60HZ 5.8A

UL LISTED
OIL BURNER NO. PI - 100001
R.W. Beckett Corp.
Made in the U.S.A.

APV

Tonawanda, N.Y. 14150, U.S.A.
(716) 692-3000
(800) 828-7391
www.apv.com

EQUIPMENT CONTROL PANEL
PROJECT 112-00756
An Invensys company

DUNKIRK
DUNKIRK NY 14048

MODEL NUMBER	3871.76Z	105 MBH
HEATING CAPACITY		92 MBH
1-HR NET RATING		80 MBH
A/C FLOW RATE (1-HR INPUT)		0.75 gph
MODEL NUMBER	3871.00Z	140 MBH
HEATING CAPACITY		119 MBH
1-HR NET RATING		103 MBH
A/C FLOW RATE (1-HR INPUT)		1.00 gph
MODEL NUMBER	3871.65Z	91 MBH
HEATING CAPACITY		80 MBH
1-HR NET RATING		70 MBH
A/C FLOW RATE (1-HR INPUT)		0.65 gph

NO. 2 HEATING OIL
ELECTRIC 115 VOLTS 60 HERTZ LESS THAN 12 AMPS

APV

APV AMERICAS - GOLDSBORO
1200 W ASH ST. GOLDSBORO, NC USA
Tel. (919) 735-4570
Fax (919) 731-2351

TYPE / YEAR **SR1 MGS-11 2002**
SERIAL No. **20023003000369**
DRAWING No. **0200369 REV02**
CHAMBER
DESIGN PRESSURE **PSIG 150 150**
TEST PRESSURE **PSIG 195 195**

Fax (919) 731-2351

TYPE / YEAR **SR1 MGS-11 2002**
SERIAL No. **20023003000369**
DRAWING No. **0200369 REV02**
CHAMBER
DESIGN PRESSURE **PSIG 150 150**
TEST PRESSURE **PSIG 195 195**
DESIGN TEMP: MAX/MIN **239F/-20F**

UNITS **INCHES**
MAX **10-5/8**
MIN **10-15/16**

IMPORTANT:
The instructions in the instruction manual are to be strictly observed during installation and operation.

SERIAL No. **20023003000369**
DRAWING No. **0200369 REV02**
CHAMBER
DESIGN PRESSURE **PSIG 150 150**
TEST PRESSURE **PSIG 195 195**
DESIGN TEMP: MAX/MIN **239F/-20F**

UNITS **INCHES**
MAX **10-5/8**
MIN **10-15/16**

IMPORTANT:
The instructions in the instruction manual are to be strictly observed during installation and operation.

DESIGN PRESSURE **PSIG 150**
TEST PRESSURE **PSIG 195**
DESIGN TEMP: MAX/MIN **239**

UNITS **INCHES**
MAX **10-5/8**
MIN **10-15/16**

IMPORTANT:
The instructions in the instruction manual are to be strictly observed during installation and operation.

