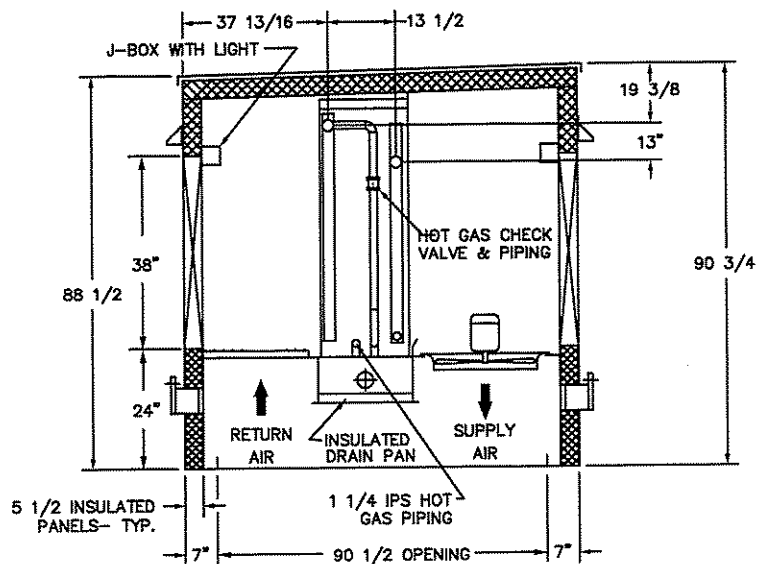
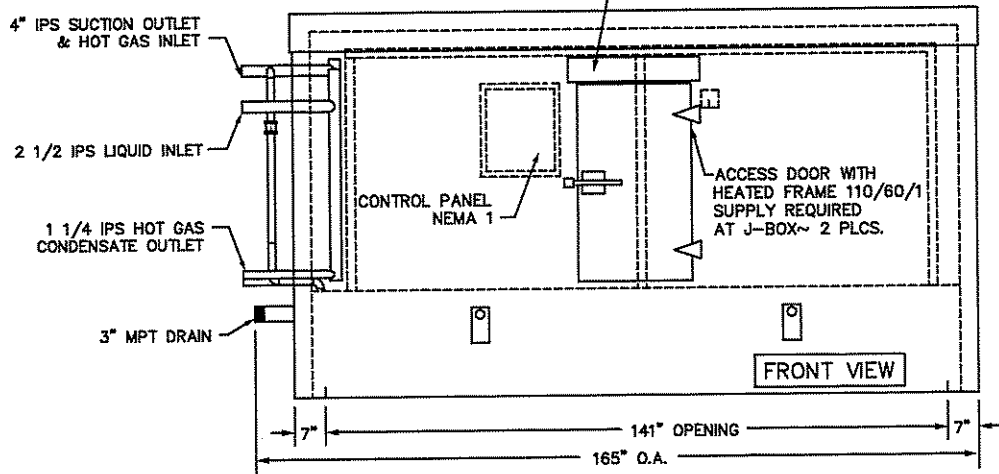
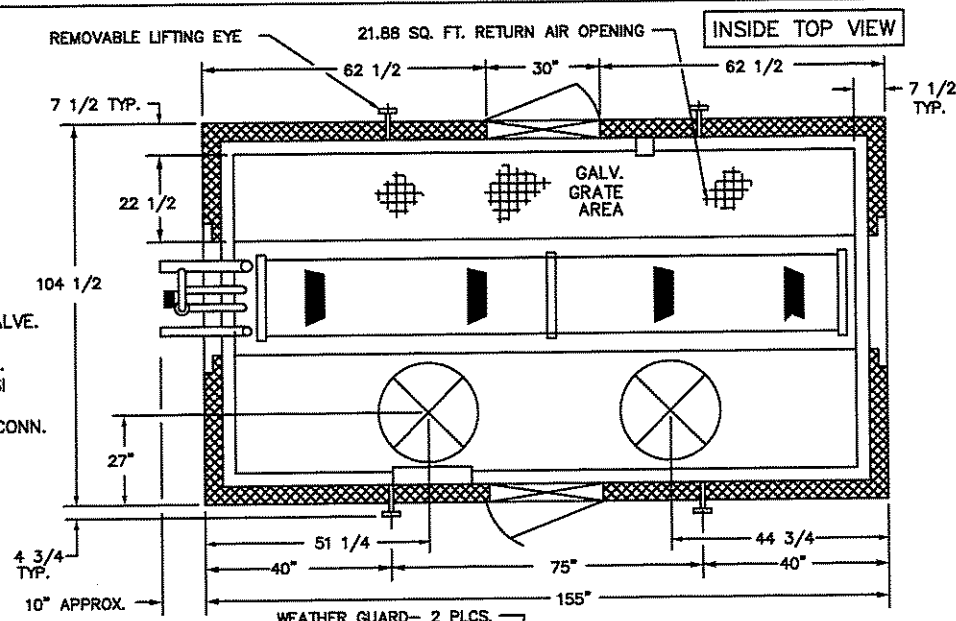


CUSTOMER- CROUCH ENGINEERING/FRICK CO.
 JOB- CREAMLAND DAIRY (ICE CREAM)
 LOCATION- ALBUQUERQUE, NM.
 QUANTITY- (1) LEFT HAND UNITS
 NET WEIGHT- 6,220 LBS.
 CAPACITY- 21 TONS @ -32°F ET/12°F TD
 REFRIG.- FLOODED R-717
 COIL DESIGN CHARGE- 250 PSI.
 DEFROST- HOT GAS
 COIL- STEEL TUBES & FINS (H.D.G.)
 CHARGE- 7.82 CU. FT. INT. VOL.
 AIR FLOW- 33,600 CFM
 FANS (2)- 36" DIA. PROP. TYPE
 MOTORS (2)- 5 HP/1200 RPM 460/60/3

- NOTES:
- UNIT TO BE SHIPPED IN (2) PCS.
 - ADD 18" TO OVERALL HEIGHT FOR INSULATED STEEL CURB (NOT SHOWN, SEE DWG. 106570-5-3).
 - SEE DWG. 941351A030 FOR DISCHARGE PLENUM SECTION.
 - LEFT HAND UNIT SHOWN
 - VELOCITY THRU COILS= 768 FPM
 - COIL FACE AREA= 43.75 SQ.FT.
 - THE SUCTION CONNECTION IS SIZED FOR A STOP VALVE BEFORE THE RISER. PLEASE NOTIFY THE FACTORY IF THIS IS NOT THE CASE.
 - LIQUID LEVEL IN SURGE DRUM MUST BE 10", MINIMUM, ABOVE SUCTION OUTLET WITHOUT A SUCTION STOP VALVE.
 - LIQUID LEVEL IN SURGE DRUM MUST BE 15", MINIMUM, ABOVE SUCTION OUTLET WITH A SUCTION STOP VALVE.
 - INCREASE LIQUID LEVEL AT RATE OF 12" PER 0.30 PSI FOR ADDITIONAL PRESSURE LOSSES.
 - RECOMMENDED RISER SIZE: 2 1/2 IPS. THE SUCTION CONN. CAN BE 2 1/2 IPS WHEN A VALVE IS NOT BEFORE THE RISER.
 - RECOMMENDED SUCTION STOP VALVE SIZE: EQUAL TO, OR LARGER THAN, 4" IPS PORT SIZE.
 - EACH SUCTION CONNECTION SHOULD BE INDIVIDUALLY PIPED TO THE SURGE DRUM.



INSIDE END VIEW



DO NOT SCALE PRINT
 WORK TO DIMENSIONS

ALL DIMENSION ARE OUTSIDE
 UNLESS OTHERWISE SPECIFIED

CUSTOMER P.O. 91514B		FRICK P.O. 272267	
S.O. 41351A	SHEET		OF
DATE 5/18/02	SCALE NONE	NO. REQD NOTED	
DRAWN BY AP	CHKD BY	APVD BY	
TITLE			
ROOF TOP FREEZER			
MODEL RTFSL-442-B-3-5-FL-HGU-IP-PCV		DRAWING NO. 941351AL	
FRIGID COIL		REV	