

## FES Mycom 160S Rotary Screw Compressor Package - 125 HP

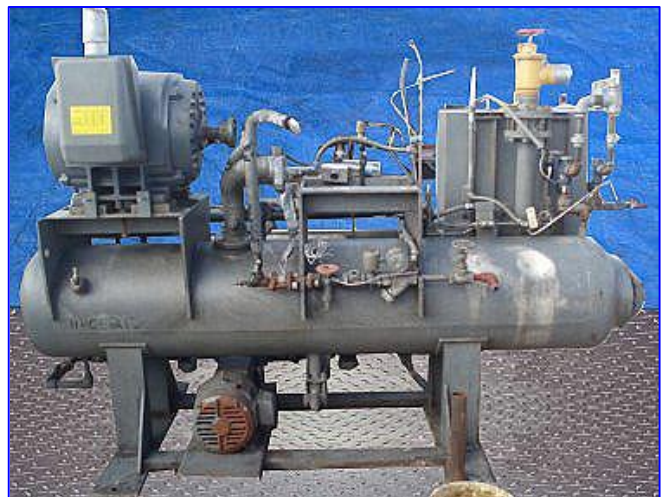
Mfg: FES Mycom

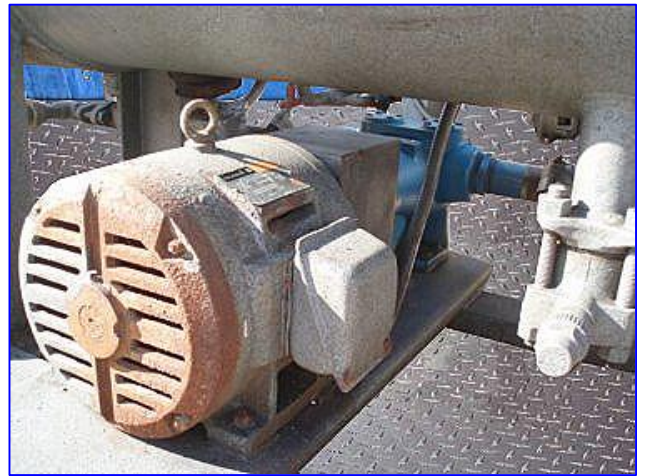
Model: 100-LE/160S

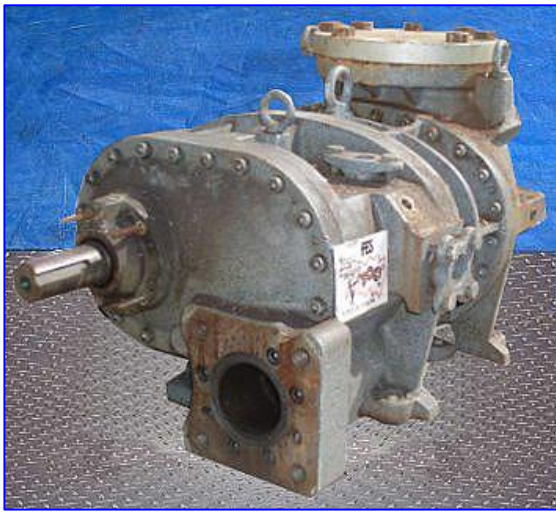
Stock No. HDCF212.19a

Serial No. 1652915

FES Mycom 160S Rotary Screw Compressor Package - 125 HP. FES 100-LE. Mycom 160S. S/N: 1652915. Refrigerant: ammonia. Leak test pressure: 313 psig. Hydrostatic test pressure: 470 psig. FES Oil Separator, S/N: 87086, Nat'l Bd: 3070, MAWP: 250 psi, max temperature: 200 °F. Toshiba Motor, 125 hp, 3535 rpm, 230/460 V, 292/146 amps, 60 Hz, 3 phase. Viking Rotary Positive Displacement Pump, Model: AV426AS, S/N: 2541777. Reliance A-C Motor, 3 hp, 230/460 V, 8.82/4.41 amps, 60 Hz, 3 phase. FES Micro II Control Panel, FES Contract No. 88-0009-0301-09, power supply: 120 V, 25 FLA, 60 Hz, single phase. Inlets: (1) 3 in. dia. flanged refrigerant suction port. Outlets: (2) 1 in. dia. press. relief valves, (1) 3 in. dia. refrigerant discharge port. RAM Motor Starter Control Panel, Job No: S0P4941, Dwg. No: 035-00563C Rev. G, power supply: 460 V, 157.4 amps, 60 Hz, 3 phase. Compressor run time: 11920 hrs. Overall dimensions: 112 in. L x 45 in. W x 74 in. H.







The opening of the branch-circuit protective device may indicate that a fault current has been interrupted. To reduce the risk of fire or electrical shock, all components should be examined and replaced if damaged. If burnout of the current element occurs, the complete overload relay must be replaced.

**RAM**  
MOTORS & CONTROLS  
Reading, PA 19607

Job No: SOP4941  
 Drawing No: 025-00563C, Rev. G  
 Volts: 460 Phase: 3 Hz: 60  
 Full Load Amps: 157.4

**FES**

COMPRESSOR MFGD UNDER PATENTS LICENSED FROM SVENSKA ROTOR MASKINER, AKTIEBOLAG SWEDEN

MODEL 100-45  
 SER. NO. 2052925  
 TEST PRESSURE — PSIG  
 LEAK 525 HYD. 370  
 REFRIGERANT R-22  
 530-00093A-000

**HIGH EFFICIENCY** WORLD ENERGY

**3-PHASE INDUCTION MOTOR**

MODEL NO. 31252V100L15 ENCL. TPT

HP	100	TYPE	INDUK	VOLTS	200/200
FRAME	31252V1	NO.	50	50	50
REV.	004125	RPM	3555		
PHV	004125	AMP	157.4		
MAX. DES.	11	SER. NO.	00188A		
CODE		ADJ. EFF.	0.92	LB.	051000
		NO.	051000		
		NO.	051000		

50/60-200V NETWORKS AT 325 AMP  
 100/200-200V NETWORKS AT 157.4 AMP

**TOSHIBA / HOUSTON**  
INTERNATIONAL CORPORATION HOUSTON, TEXAS

SEC ELECTRICAL, INC.

FES Contract No. 87-0009-0301-09  
 Model No. FES 100 Serial No. 87-0009-0301  
 Electrical Inspection by L. KESSLER Date 2/15/88

**FES INC.**  
YORK, PA. U.S.A.

M606-77

UNDERWRITERS

