

FES 505XB / Howden 255/1.45 Booster Rotary Screw Compressor Package - 200 HP

Mfg: FES / Howden

Model: 505XB / MK4C255/1.45

Stock: HDCF245

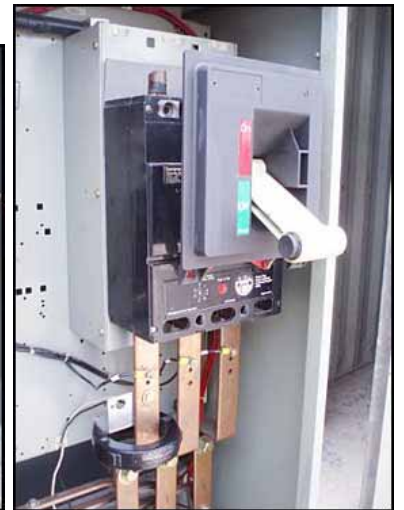
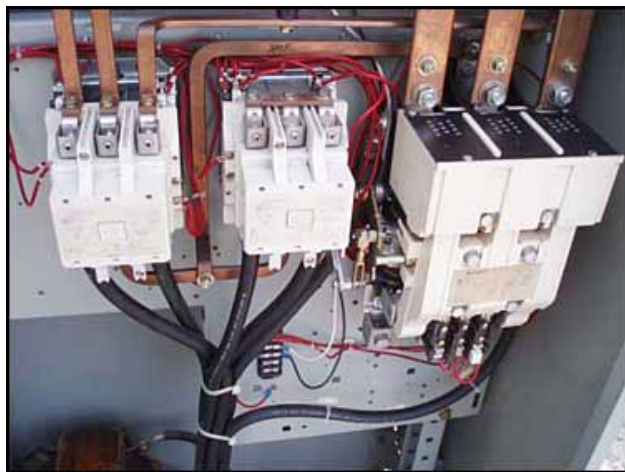
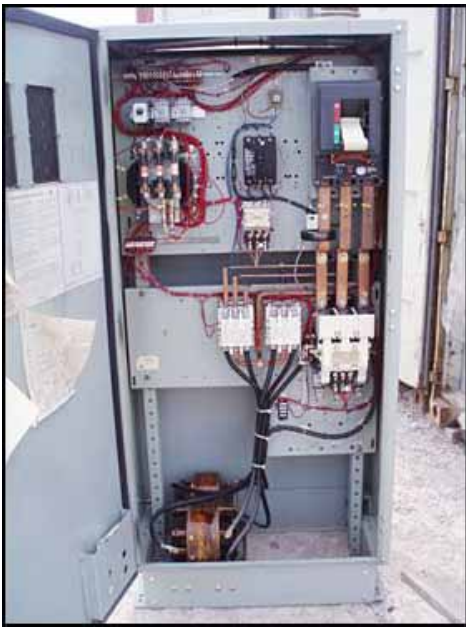
Serial No: 001

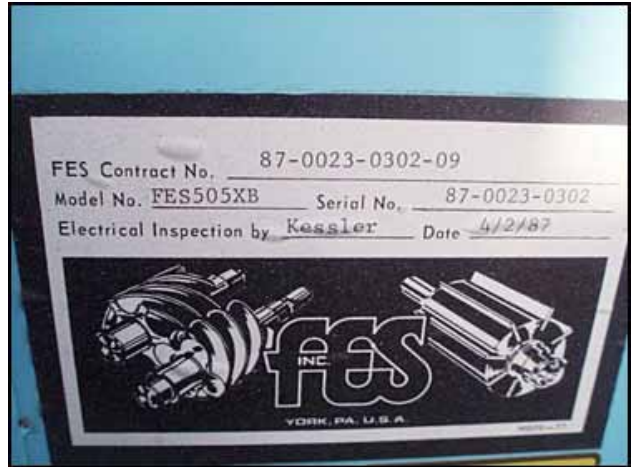
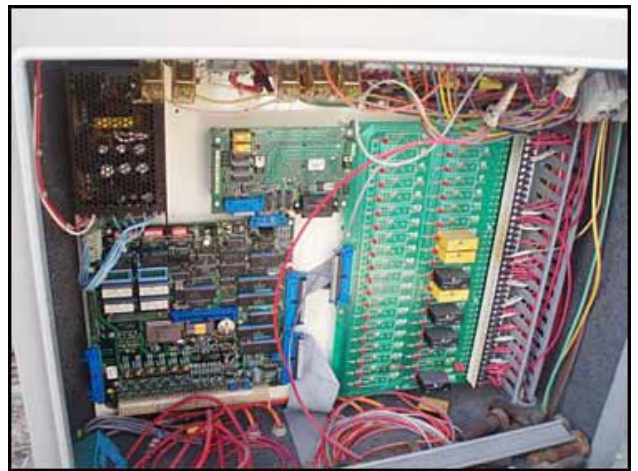
FES 505XB / Howden MK4C255/1.45 Booster Rotary Screw Compressor Package. Model: 505XB / MK4C255/1.45. S/N: 001. FES Contract No: 87-0023-0302-09. Refrigerant: R-717 (ammonia). Howden rotary screw compressor, Model: MK4C255/1.45, S/N: 001. Vi setting: 2.6. Displacement: 1,514 cfm. Leak test pressure: 313 psig. Hydrostatic test pressure: 470 psig. FES oil separator. Nat'l Bd No. 2915. S/N: 87046. MAWP: 250 psi at 200°F. Viking pump. P/N: 290-000040-000. S/N: 10860711. Toshiba electric motor, 7-1/2 hp, 1165 rpm, 230/460 V, 32/10.5 amps, 60 Hz, 3 phase. Toshiba electric motor, 200 hp, 3540 rpm, 230/460 V, 470/235 amps, 60 Hz, 3 phase. FES Micro control panel. Westinghouse motor starter. Drawing Number: 2105A69. Power requirements: 200 hp, 460 V, 60 Hz. Panel dimensions: 2 ft. 11 in. L x 2 ft. 9 in. W x 6 ft. 8 in. H. Inlets : (1) 6 in. dia. port. Outlets: (1) 2 in. dia. port. Overall dimensions: 13 ft. 5 in. L x 4 ft. 4 in. H. x 7 ft. 9 in. H.



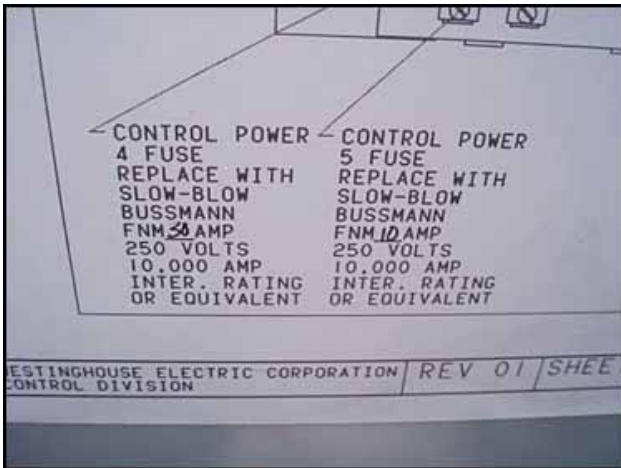






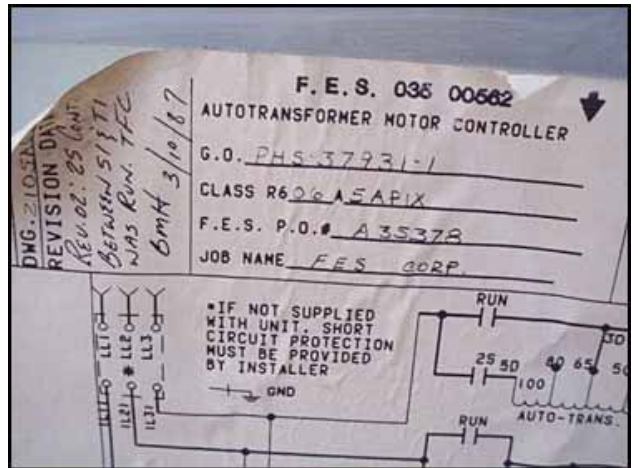


FES Contract No. 87-0023-0302-09
 Model No. FES505XB Serial No. 87-0023-0302
 Electrical Inspection by Kessler Date 4/2/87



CONTROL POWER	CONTROL POWER
4 FUSE	5 FUSE
REPLACE WITH	REPLACE WITH
SLOW-BLOW	SLOW-BLOW
BUSSMANN	BUSSMANN
FNM 50 AMP	FNM 10 AMP
250 VOLTS	250 VOLTS
10,000 AMP	10,000 AMP
INTER. RATING	INTER. RATING
OR EQUIVALENT	OR EQUIVALENT

WESTINGHOUSE ELECTRIC CORPORATION REV 01 SHEET
 CONTROL DIVISION



DMG-2105A69
REVISION DN
Rev. 02: 25 Unit
Between 5/8/81
was Rev. TFC
6mH 3/10/87

F. E. S. 035 00562
 AUTOTRANSFORMER MOTOR CONTROLLER
 G.O. PHS 37931-1
 CLASS R606A5AP1X
 F.E.S. P.O.# A35378
 JOB NAME FES CORP



Westinghouse
 Trm-Aire
 Air Conditioning
 Motor Control

200 HP 235 FLA
 480V-60HZ SF 1.15
 PHS 7931
 R606A5AP1X
 DMG 2105A69
 SPEC 60.31
 03-87 A35378

CONTROL DIVISION
 Asheville, N.C.



MOTOR CONTROL

200 HP 235 FLA
 480V-60HZ SF 1.15
 PHS 7931
 R606A5AP1X
 DMG 2105A69
 SPEC 60.31
 03-87 A35378

