

NOTE—
 UNIT SHOWN IN SHIPPING POSITION.
 UNIT HAS TO BE RAISED & SUPPORTED,
 LEGS UNBOLTED, LOWERED TO
 MOUNTING POSITION AND REBOLTED.

③ REQ'D.
 I.P.E.
 P.O.# 1461

TORS T.E.F.C. M...
 00 # ...
 O ...
 1/2" E.S.P. ...
 F. ...
 1" E.S.P. ...

**WORK TO DIMENSIONS
 DO NOT SCALE PRINT**

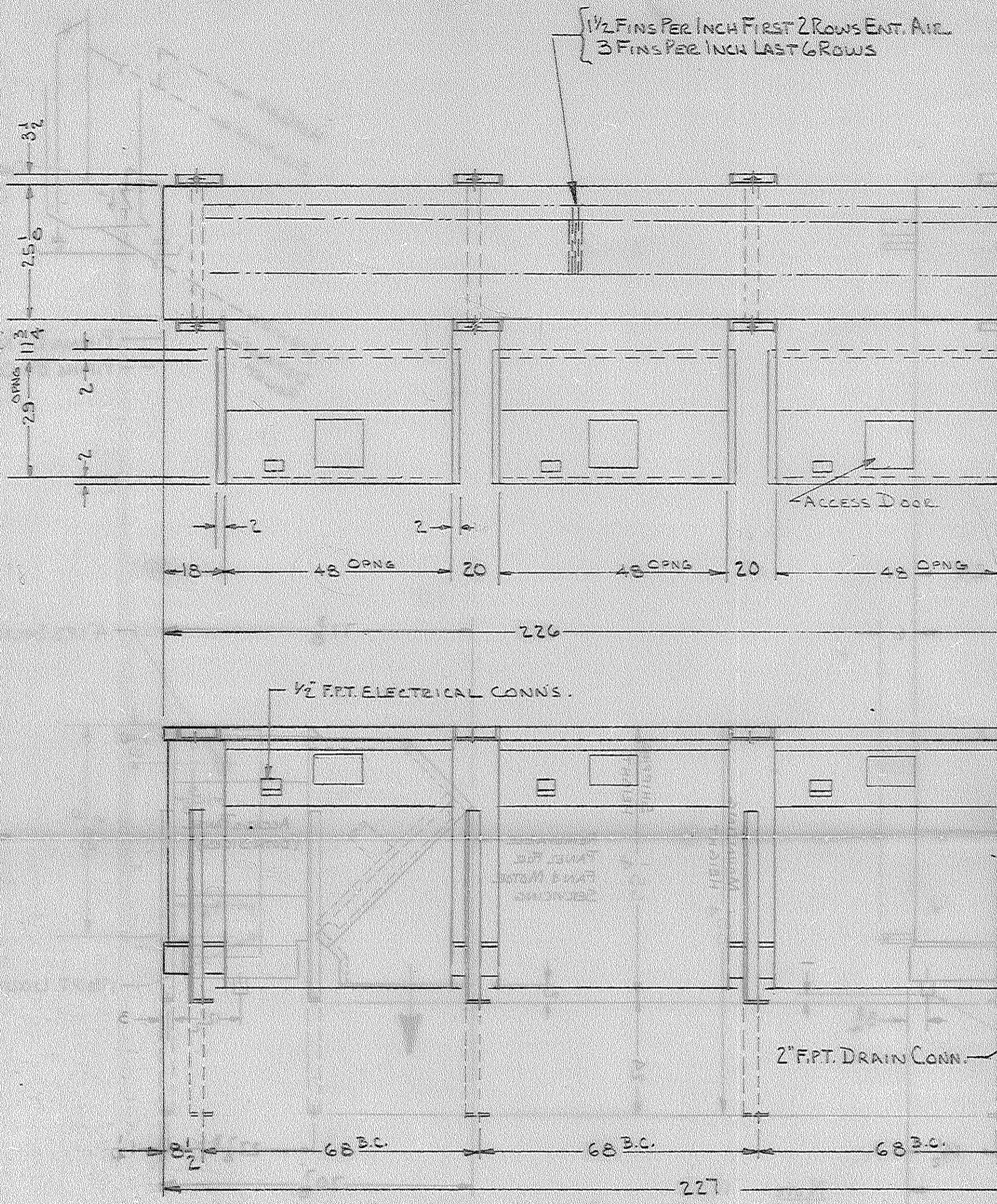
TOLERANCES
 UNLESS OTHERWISE SPECIFIED FOLLOW.
 ING TOLERANCES APPLY

FRACTIONAL	± 1/2
ONE PLACE DEC. (.5)	±
TWO PLACE DEC. (.00)	±
THREE PLACE DEC. (.000)	±
ANGULAR	±

TOLERANCES ARE NOT CUMULATIVE

THIS DRAWING IS THE PROPERTY OF KRACK CORP. AND IS SUBJECT TO RETURN UPON REQUEST. IT IS TO BE USED ONLY FOR THE PURPOSE FOR WHICH IT WAS EXPRESSLY LOANED AND IS NOT TO BE USED IN ANY WAY DETRIMENTAL TO THE INTERESTS OF THE KRACK CORPORATION.

F. Y. SEP1A							
ASSY.		PROD.					
TOOL ROOM		CONN.					
FIN. PUNCH		COIL					
SHEET METAL		ENG.					
LOCATION	A	LOCATION	A	NO.	CHANGE DESCRIPTION	DATE	CK'D.
PRINT DISTRIBUTION				REVISIONS			
MATERIAL AS SPECIFIED							
FINISH AS SPECIFIED		SUPERSEDES		SUPERSEDED BY			
DATE 1/19/87		SCALE		NO. REQ'D.			
DRAWN PL		CHECKED		APPROVED			
TITLE CEILING TYPE AXIAL FLOW PRODUCT COOLER DOWN DISCHARGE							
MOD. SPC1S3-788-1/23-3 RBA				JOB No. 368730-32			
KRACK CORP.				PART NO.		REV.	

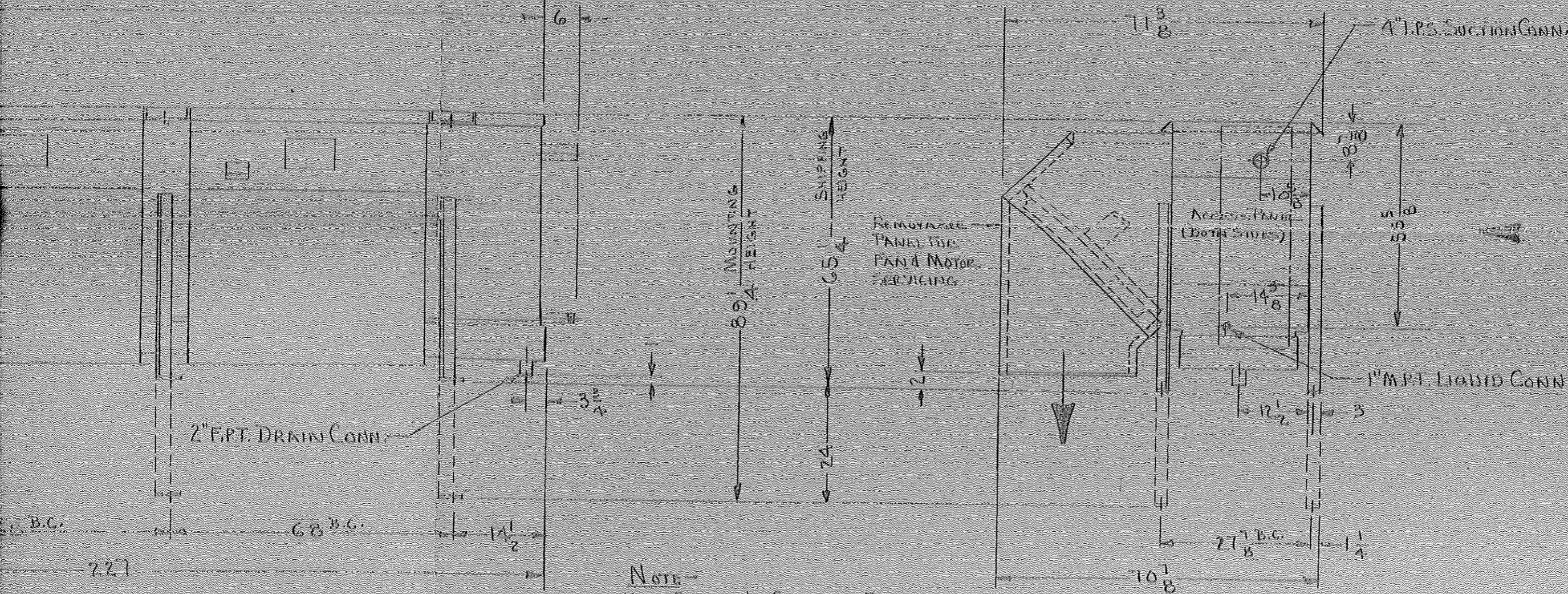


COIL: ALL STEEL HOT DIP GALVANIZED
 REFRIG: RECIRC BOTTOM FEED AMMONIA
 DEFROST: HOT GAS COIL & PAN
 UNIT CONSTRUCTED OF MILL FINISHED
 GALVANIZED SHEET STEEL
 DRAIN PAN: STAINLESS STEEL
 INSULATED COVER - GALVANIZED SHEET STEEL

3 HP. 1160 R.P.M. 460/60/3 M
 APPROX WT. 600
 BTUH 3465
 C.F.M. 4900
 COIL TEMP. -4
 ROOM TEMP. -2

UNIT CIRCUITED FOR 3 TO 1
 RATE OF RECIRCULATION
 WITH PUMPED LIQUID SUBCOOLED
 TO EVAPORATOR REFRIGERANT
 TEMPERATURE

EACH DRAIN PAN CONDENSATE
 CONNECTION MUST BE TRAPPED.



NOTE—
 UNIT SHOWN IN SHIPPING POSITION.
 UNIT HAS TO BE RAISED & SUPPORTED,
 LEGS UNBOLTED, LOWERED TO
 MOUNTING POSITION AND REBOLTED.

(3) REQ'D.
 I.P.E.
 P.O.# 1461

3 HP. 1160 R.P.M. 460/60/3 MOTORS T.E.F.C.
 APPROX WT. 6800#
 BTUH 346550
 C.F.M. 43000 @ 1/2" E.S.P.
 COIL TEMP. -40°F
 ROOM TEMP. -28.1°F

WORK TO DIMENSIONS
 DO NOT SCALE PRINT

TOLERANCES
 UNLESS OTHERWISE SPECIFIED FOLLOW:
 ING TOLERANCES APPLY

FRACTIONAL	± 1/2
ONE PLACE DEC. (.0)	±
TWO PLACE DEC. (.00)	±
THREE PLACE DEC. (.000)	±
ANGULAR	±

TOLERANCES ARE NOT CUMULATIVE.

THIS DRAWING IS THE PROPERTY OF KRACK CORP. AND IS SUBJECT TO RETURN UPON REQUEST. IT IS TO BE USED ONLY FOR THE PURPOSE FOR WHICH IT WAS EXPRESSLY LOANED AND IS NOT TO BE USED IN ANY WAY DETRIMENTAL TO THE INTERESTS OF THE KRACK CORPORATION.

F. V. BEPIA									
ASSY.		PROD.							
TOOL ROOM		CONN.							
FIN. PUNCH		COIL							
SHEET METAL		ENG.							
LOCATION	A	LOCATION	A	NO.	CHANGE DESCRIPTION	DATE	CK'D.		
PRINT DISTRIBUTION					REVISIONS				
MATERIAL AS SPECIFIED									
FINISH AS SPECIFIED					SUPERSEDES		SUPERSEDED BY		
DATE 1/9/87					SCALE		NO. REQD.		
DRAWN RR					CHECKED		APPROVED		
TITLE CEILING TYPE AXIAL FLOW PRODUCT COOLER DOWN DISCHARGE									
MOD. S.P.C. 153-788 1/2 3-3 RBA					JOB NO. 368730-32				
KRACK CORP.					PART NO.			REV.	

CONDENSATE
 BE TRAPPED.