

Used Waukesha 130 Positive Displacement Pump

Mfg: Waukesha Cherry Burrell

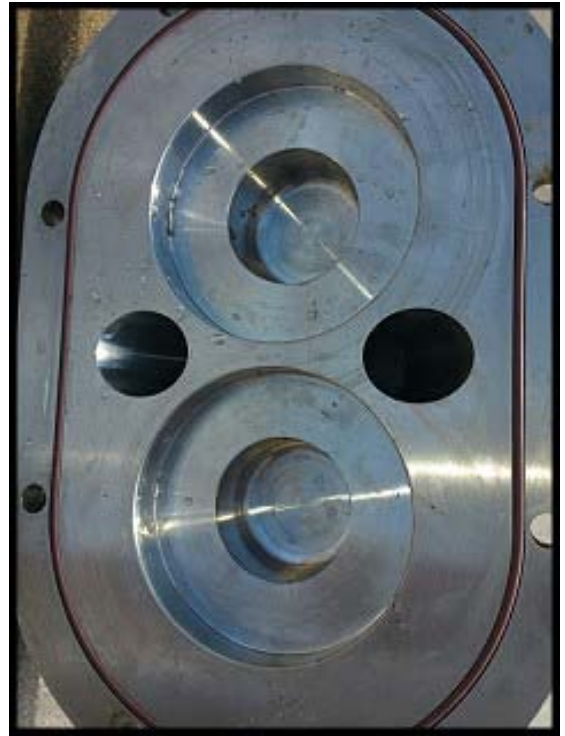
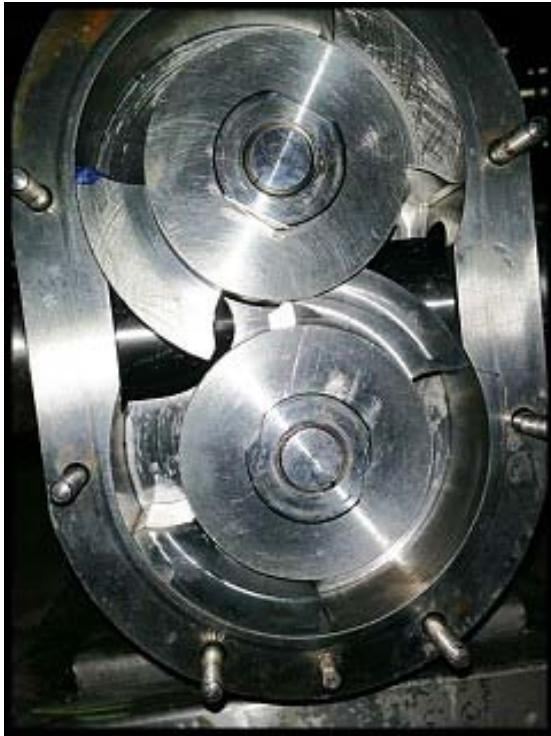
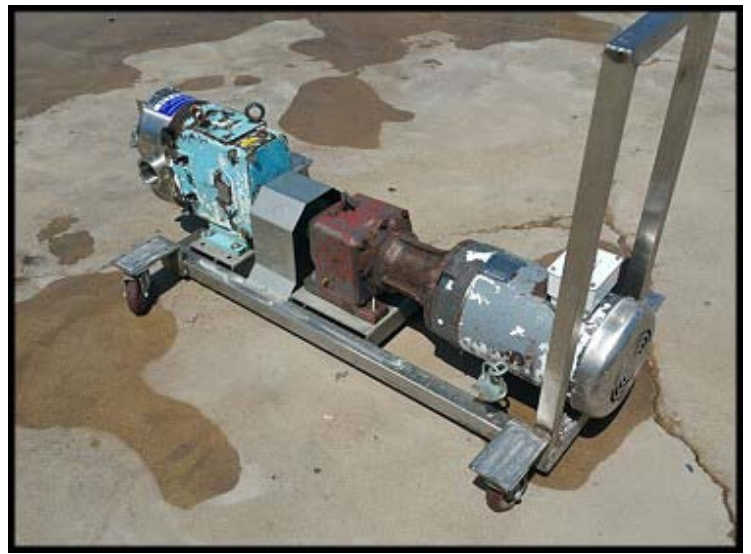
Model: 130-U1

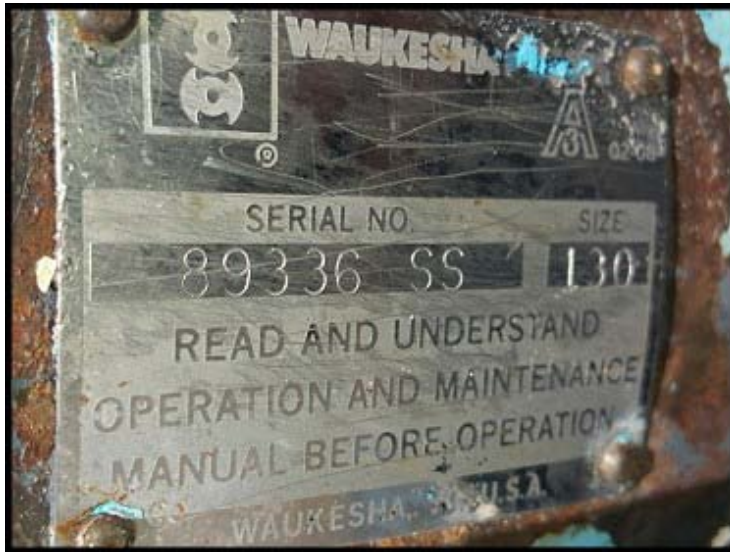
Stock No.: HDUL505.22a

Serial No.: 89336-SS

Waukesha Positive Displacement Pump. Model 130-U1. Serial 89336-SS. Displacement per revolution: 0.254 gallons. Nominal capacity to: 150 GPM. Maximum pressure: 200 PSI. Baldor Washdown Electric Motor: 10 HP, 230/460V, 26/13 amps, 1725 RPM, 3-phase, 60 Hz, 215TC frame. Nord gear drive ratio 7.37 (234 final RPM / 59 GPM). Includes stainless steel cart and pressure relief faceplate cover. Ports: 3 in. S-Line. Overall dimensions: 5 ft. 1 in. L x 2 ft. 4 in. W x 3 ft. 1.5 in. H.



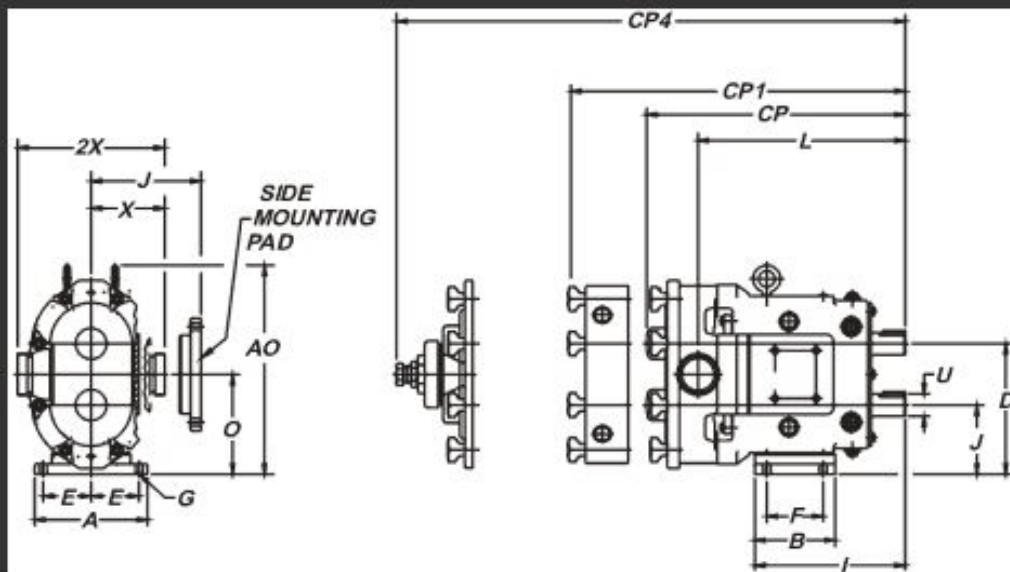






MODEL 130-UI

0-600 RPM speed range. 3" port size; suitable to 200 PSI (13.8 bar) differential pressure. Temperature range -40°F (-40°C) to 300°F (149°C).



	A	AO	B	CP	CP1	CP4	D	E	F	G	I	J	L	O	U	X	2X
IN	8.25	15.31	5.87	19.85	21.63	23.01	9.56	3.50	4.12	.53	10.99	5.06	15.77	7.31	1.625	5.37	10.75
MM	210	389	149	504	549	584	243	89	105	13	279	129	401	186	41.28	136	273

CP= Standard Cover, CP1= Jacketed Cover, CP4= Manual Vented Cover, Connection sizes for Jacketed Covers are ¾"-14 NPT on Models 006-UI to 030-UI, 1"-11-½ NPT on Models 060-UI and 130-UI.

Dimension 'X' and '2X' apply for Bevel Seat, "S"-Clamp, "Q"-Clamp, 15I and 14I fittings.

NOTE: Dimensions are for guidance purposes only. Contact your WCB Representative if more detailed measurements are needed.

Approximate shipping weight 305 lb. (138 kg.)