

Culligan 3 stage Reverse Osmosis System

Mfg: Culligan

Model: KP-113

Stock No. HDYA054.39a

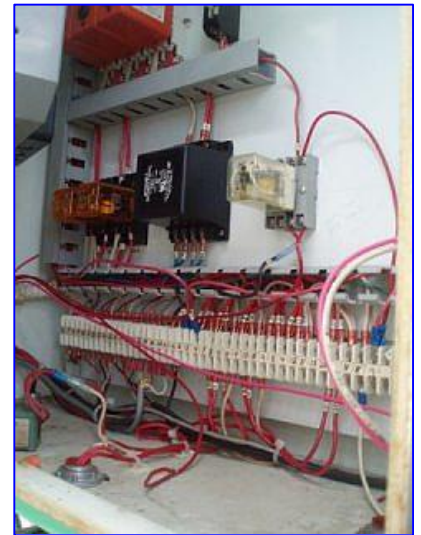
Serial No. KP-7985

Culligan 3 stage Reverse Osmosis System. Model: KP-113. S/N: KP-7985. Capacity: 35 gpm. Culligan Flow Monitor. S/N: P58440. P.O. No. 03915. Filterite Water Filter. Model: 910600-000. S/N: A-Q60004. Type: 14TK02A-25P. (7) 30 in. L x 1-1/2 in. filters. Micron: 30. MAWP: 150 psig @ 200 °F. (2) Injection filter, Capacity: 16-11 gpm. Injection ratio: 1: 500 . 1: 64. Operating flow: 2.64 gph to 660 gph. Self-priming. MAWT: 110° F. (5) Waste water membrane purifiers. Membrane bank dimensions: 8 in. dia. x 11ft. 6 in. L. Tonkaflo Centrifugal Pump. Model: SS8520E-80400. S/N: 78912129. Maximum liquid temperature: 125 °F. Sterling Electric Motor, 30 hp, 3500 rpm, 208-230/460 V, 60 hz, 3 phase. Inlets: (1) 2 in. dia. FNPT fitting. Outlets: (1) 3 in. dia. NPT fitting. Inlets: (1) 3 in. dia. port. Outlets: (1) 2 in. dia. port. Overall dimensions: 14 ft. 4 in. L x 5 ft. 8 in. W x 8 ft. 10 in. H.









DO NOT OPERATE WITH CLOSED DISCHARGE
 MAXIMUM LIQUID TEMPERATURE []
 FOR PROPER OPERATION
 REFER TO INSTRUCTION MANUAL
 Manufactured by:
TONKAFLO
 PUMP DIVISION
 Minnetonka, Minnesota 55343 U.S.A.
 612/933-2277 TELEX 29 0847

TonkaFlo PUMPS
 MODEL SS8520E-80400
 SERIAL NO. 78912129
 MECH SEAL STD 1'-21-BF50-1C1-3
 CONSTR STD
CAUTION
 DO NOT RUN DRY



FILTERITE
 MODEL 910500-000
 TYPE 14TAC2A-2SP
 PRESSURE 150 PSIG AT
 SERIAL A-GY 60004
 WARNING: Do not operate in excess of stated pressure and temperature.
 Specify only Filterite filter cartridges and replacement parts.
 FILTERITE • TIMONIUM, MD. 21093 • (301) 252-6027
 FAX: (301) 252-6027

TonkaFlo PUMPS
 MODEL SS8520E-80400
 SERIAL NO. 78912129
 MECH SEAL STD 1'-21-BF50-1C1-3
 CONSTR STD
CAUTION
 DO NOT RUN DRY
 DO NOT OPERATE WITH CLOSED DISCHARGE
 MAXIMUM LIQUID TEMPERATURE []
 FOR PROPER OPERATION
 REFER TO INSTRUCTION MANUAL
 Manufactured by:
TONKAFLO
 PUMP DIVISION
 Minnetonka, Minnesota 55343 U.S.A.
 612/933-2277 TELEX 29 0847

