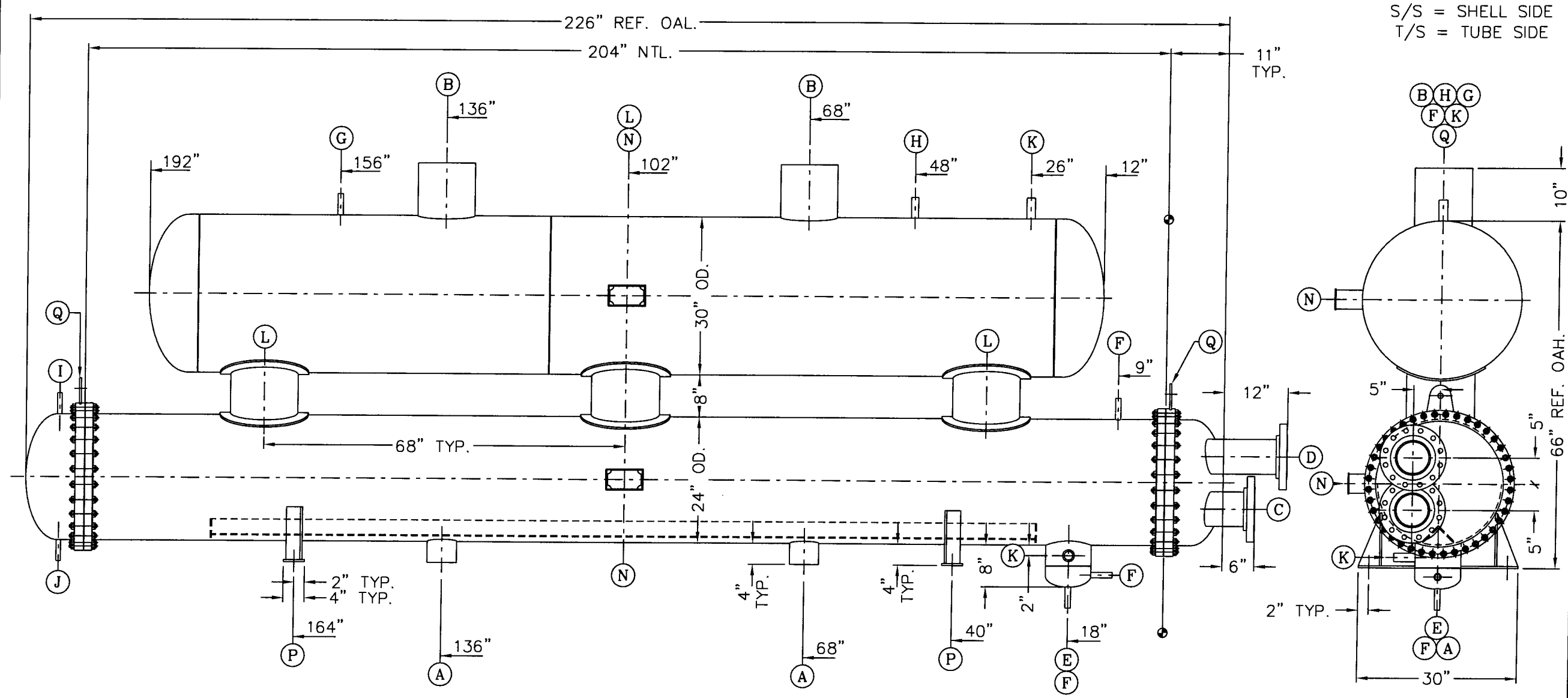


ITEM	QTY	DESCRIPTION	ITEM	QTY	DESCRIPTION	ITEM	QTY	DESCRIPTION	ITEM	QTY	DESCRIPTION
A	2	S/S INLET: 5" SCH.40 PIPE	E	1	OILPOT: 8 5/8" OD. c/w CAP	I	1	T/S VENT: 1/2" NPS (SCH.80) Δ_2	M		
B	2	S/S OUTLET: 10" SCH.80s PIPE	F	3	DRAIN/SPARE: 3/4" NPS (SCH.80) Δ_2 Δ_1	J	1	T/S DRAIN: 1/2" NPS (SCH.80) Δ_2	N	2	NAMEPLATES: c/w 5" RAISED BRACKET Δ_1
C	1	T/S INLET: 6" x 300# R.F.S.O. FLANGE (SCH.40)	G	1	RELIEF: 3/4" NPS (SCH.80) Δ_2	K	2	FLOAT: 1 1/4" NPS (SCH.80) Δ_2	P	2	LEGS: c/w 9/16" HOLES & GUSSETS
D	1	T/S OUTLET: 6" x 300# R.F.S.O. FLANGE (SCH.40)	H	1	FIRE: 1" NPS (SCH.80) Δ_2	L	3	RISERS: 12" SCH.80s PIPE.	Q	2	LIFTING LUGS: (FOR HEAD ASSEMBLIES ONLY)



S/S = SHELL SIDE
T/S = TUBE SIDE

MATERIALS	
SHELLS : SA 312 TP 304 WLD	HEADS : SA 403 304
NOZZLES : SA 312TP304 / SA182F304	BOLTING : SA 193-B8/SA194 GR.8
TUBESHEETS : SA 240 304	TUBES : SA 249 TP 304 WLD (PLAIN)
DESIGN CONDITIONS	
SHELL SIDE D.W.P. : 250 P.S.I.G.	TUBE SIDE D.W.P. : 150 P.S.I.G.
SHELL SIDE D.W.T. : -80°F / 200°F	TUBE SIDE D.W.T. : -80°F / 200°F
MIN. D. METAL T. : -80°F. Φ 250 PSIG.	MIN. D. METAL T. : -80°F. Φ 150 PSIG.
REFRIGERANT : R-717	FLUID : DOWTHERM J
EVAPORATION TEMP. : -72°F	RANGE : -57°F to -67°F
FLOW : 2,263 Lbs/Hr	FLOW : 663 USGPM.
CAPACITY : 1,200,000 BTU/HR	PRESSURE DROP : 11.0 PSIG.

APPROX. EMPTY WEIGHT: 9,000 (LBS) QTY: 1

- NOTES
- DO NOT SCALE DRAWING.
 - ALL DIMENSIONS ARE IN INCHES.
 - VESSEL TO BE DESIGNED & CONSTRUCTED IN ACCORDANCE WITH A.S.M.E. SECTION VIII, DIVISION 1, 2007 EDITION, 2009b ADDENDA UW-12(d)(e), CSA B-51 CODES. TEMA CLASS 'N/A'.
 - TAIL DIMENSIONS REFERENCED FROM Φ DATUM LINE.
 - VESSEL TO BE CLEAN & FREE OF ALL DIRT & SCALE.
 - ALL EXPOSED INSIDE EDGES TO BE CHAMFERED OR ROUNDED.
 - EXTERIOR FINISH: NONE
 - C.A. IS - SHELL SIDE: NIL, TUBE SIDE: NIL
 - RADIOGRAPHY: NONE
 - VESSEL TO BE SHIPPED c/w A 5 PSIG. NITROGEN CHARGE
 - VESSEL TO HAVE A DOCUMENTATION PACKAGE COMPLETED.
 - TUBES TO BE SEAL WELDED TO TUBESHEETS.

NOV. 16/10	2	CS	CHANGED F,G,H,I,J & K FROM FPT
NOV. 9/10	1	CS	REMOVED LEVEL EYES, INCREASED NAMEPLATE PROJECTION
DATE	REV.	BY	REVISION
		P. O. BOX 1385, BRANTFORD, ONTARIO, CANADA, N3T 5T6 PHONE: (519) 759 3010 FAX: (519) 759 6746 or (519) 759 1611 WEB: www.CHIL-CON.com	
MODEL No.: FA-24204-410 DOWTHERM CHILLER c/w RA-30180-509 SURGE DRUM			
CUSTOMER:		CUST. ORDER No.:	
DATE:	BY:	CHK'D:	APP'D:
OCT. 28/10	JH		
SCALE:	ORDER NUMBER:		REV. No.:
N.T.S.	C300531A/B		2