

Electronic Hydronic Supply Control Panel

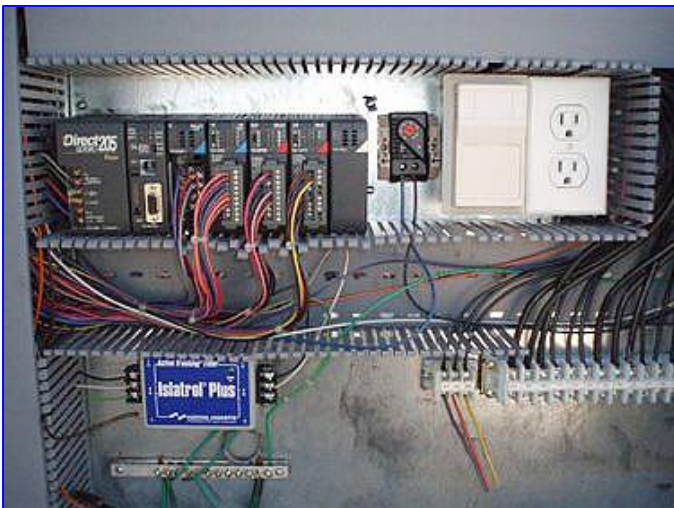
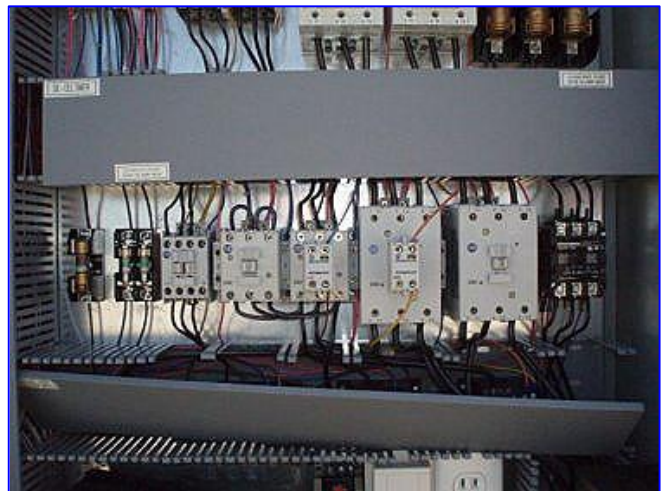
Mfg: Electronic Hydronic Supply

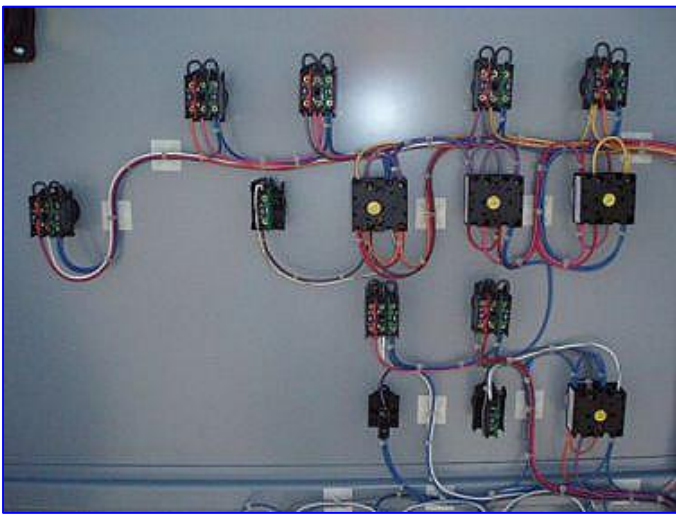
Model:

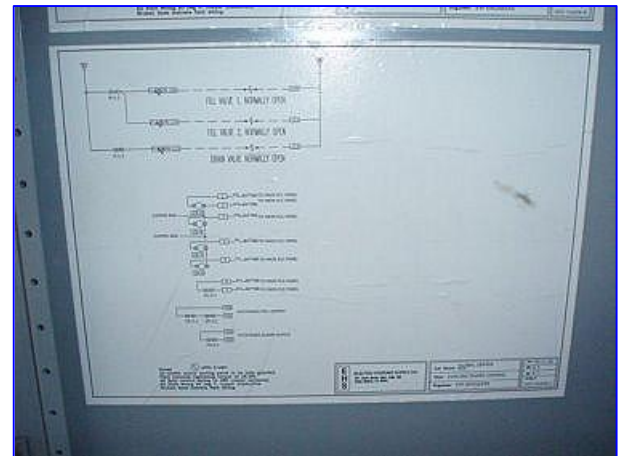
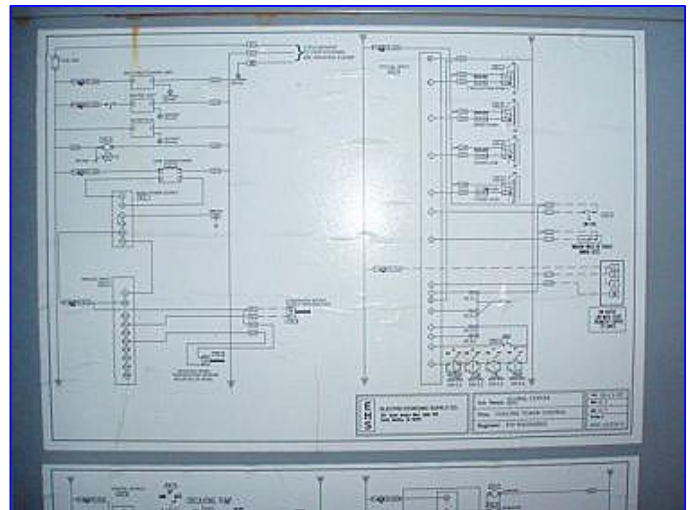
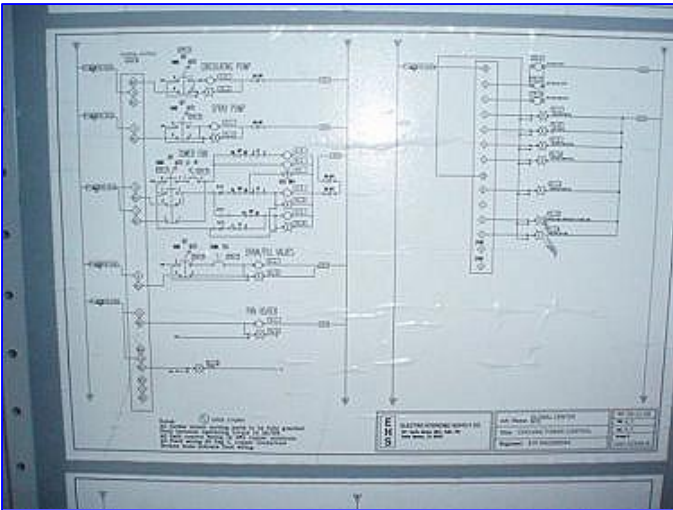
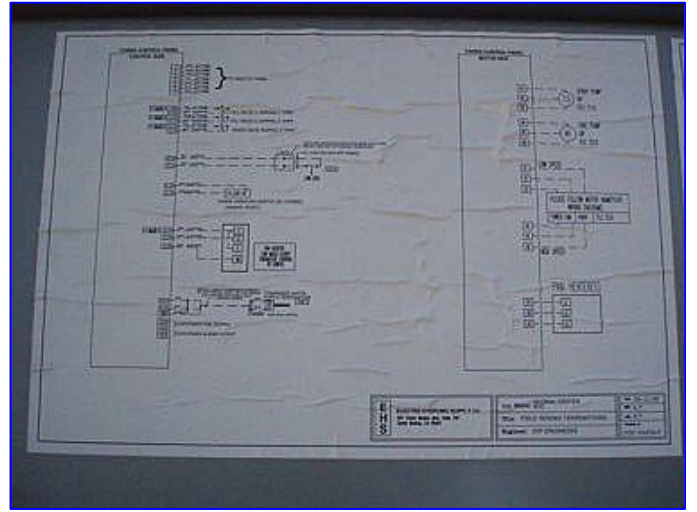
Stock No. JDWW101.

Serial No.:

(2) Electronic Hydronic Supply Control Panels. Dwgs: DOC-01659-A, DOC-01659B, DOC-01659-C, DOC-01659-F, DOC-01659P. Largest motor capacity: 40 HP. Maximum FLC: 155 amps. Koyo Direct Logic 205. Control Concepts Islatrol Plus Active Tracking Filter. Power supply: 460 V, 60 Hz, 3 phase. Overall dimensions: 44 in. L x 19 in. W x 72 in. H.







KCP Industries, Inc.

FOR INFORMATION REGARDING
INSTALLATION & OPERATION CALL:
(714) 692-7796

ELECTRO HYDRONIC SUPPLY
501 Santa Monica Blvd., Suite 700
Santa Monica, CA 90401
UL Factory ID# E142801

SUPPLY VOLTAGE: 480V/3PH/60HZ
LARGEST MOTOR 40HP
MAX FLC: 155 AMPS