

1992 Paul Mueller Accu-Therm Plate Heat Exchanger

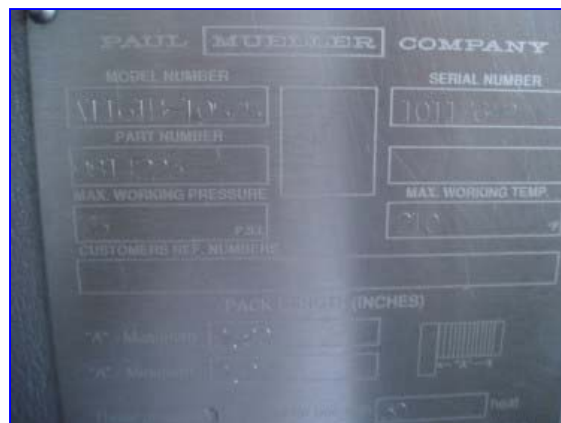
Mfg: Paul Mueller

Model: AT161B-10 S/S

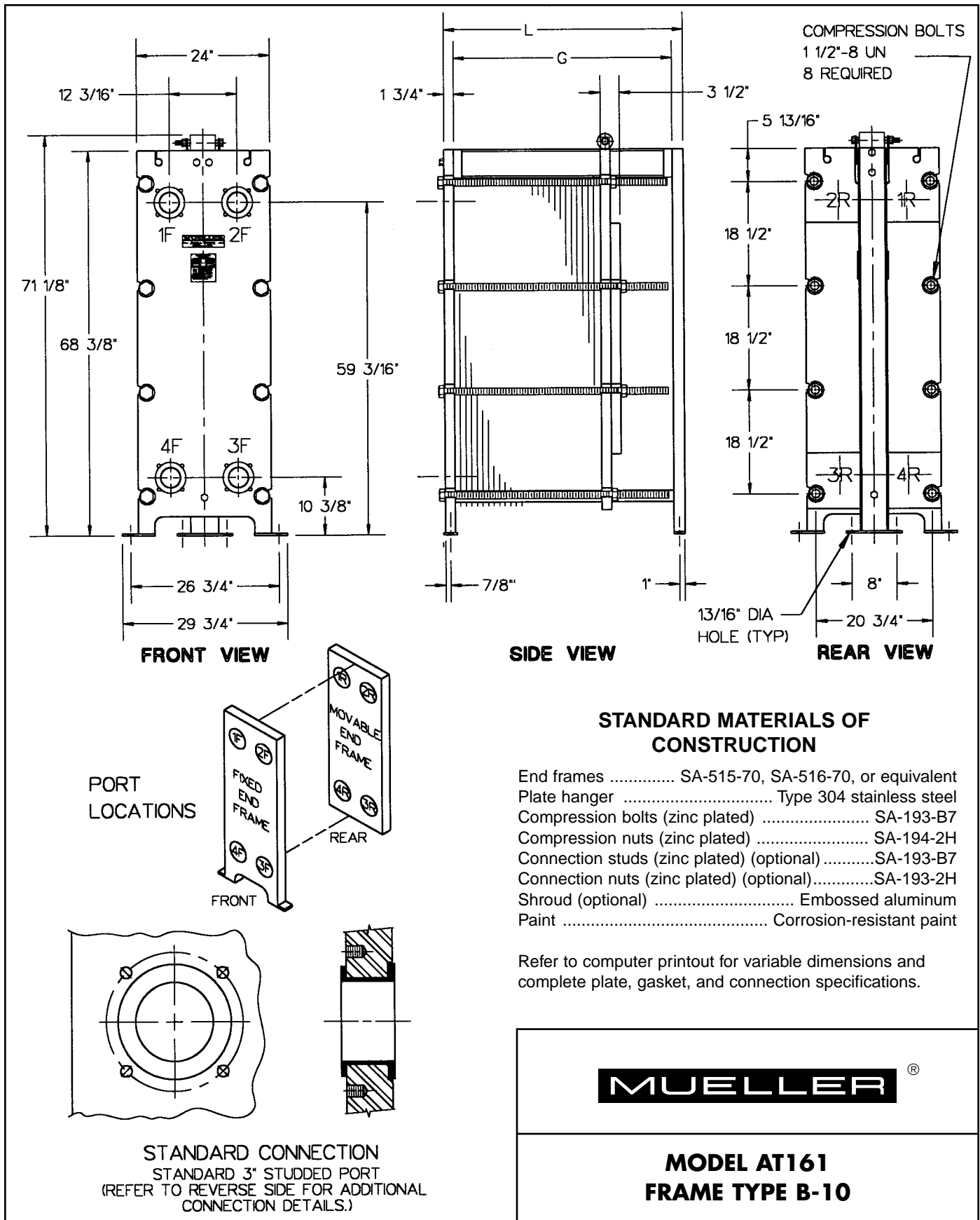
Stock No. JMB248a.10

Serial No. 101176-2

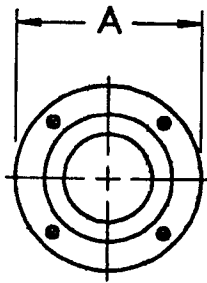
1991 Paul Mueller Accu-Therm Plate Heat Exchanger. Model: AT161B-10 S/S, S/N: 101176-2. (30) 1.25 mm, 316 stainless steel plates. Gasket material: NBR-FDA. Heat transfer surface area: Approx. 147 sq. ft. Design pressure: 75 psig. Design temperature: 210 °F. Test pressure: 98 psig. Fixed end ports: (4) 3 in. Movable end ports: (4) 3 in. Overall dimensions: 43 in. L x 33-1/2 in. W x 84 in. H. Previous duty: Hot medium: Hot Water - 250 gpm, From 203 °F to 182.6°F, Pressure drop: 20.14 psi Cold medium: SS OJ - 120 gpm, From 173 °F to 195 °F, Pressure drop: 4.20 psi



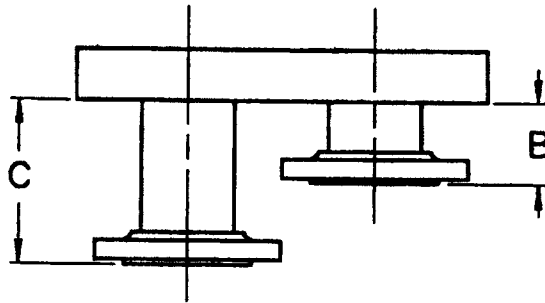
Accu-Therm[®] Plate Heat Exchangers



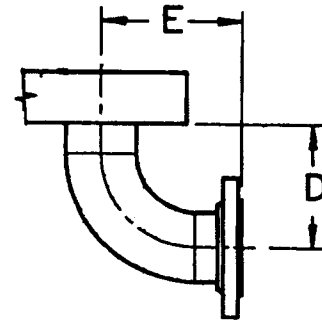
FLANGED CONNECTIONS



FRONT VIEW



TOP VIEW



TOP VIEW

Connection	Size	A	B	C	D	E	No. Bolts/Conn.	Bolt Size
Studded port	3"	—	—	—	—	—	4	5/8"-11 UNC
Lap-joint flange	3"	7 1/2"	3 13/16"	—	—	—	4	5/8"-11 UNC
	4"	9"	5 1/16"	—	—	—	8	5/8"-11 UNC
Lap joint with elbow	3"	7 1/2"	—	—	6 1/2"	7 1/2"	4	5/8"-11 UNC
	4"	9"	—	—	8"	9"	8	5/8"-11 UNC

NOTE: 1. Adjacent flange faces must be offset in some cases. Flanges located at Port Positions 1 and 4 are extended to "C" dimension when offset is required.
 2. If connections are other than the standard connection (shown on front), or if the unit is a multipass, contact Paul Mueller Company for clarification.

PLATE CAPACITY / GUIDE LENGTH

Guide length (DM G)	30"	48"	66"	84"	102"	120"	138"	156"
Frame length (DM L)	33 5/8"	51 5/8"	69 5/8"	87 5/8"	105 5/8"	123 5/8"	141 5/8"	159 5/8"
Plate cap. AT161FF 1.25 mm std gsk	35	82	130	178	226	274	322	370
Plate cap. AT161FF 1.25 mm thk gsk	24	58	92	126	159	193	227	261

PLATE CAPACITY / COMPRESSION-BOLT LENGTH

Compression-bolt length	12"	18"	24"	36"	48"	60"	78"	96"	114"	132"	156"
Plate cap. AT161FF 1.25 mm std gsk	11	27	43	75	107	139	187	235	283	331	379
Plate cap. AT161FF 1.25 mm thk gsk	8	19	30	53	75	98	132	166	199	233	267

Paul Mueller Company

P.O. Box 828 • Springfield, MO 65801-0828

Telephone: (417) 831-3000 • 1-800-MUELLER

Fax: (417) 831-6642