

## ITT / Goulds / G&L NPE-Series Centrifugal Pump

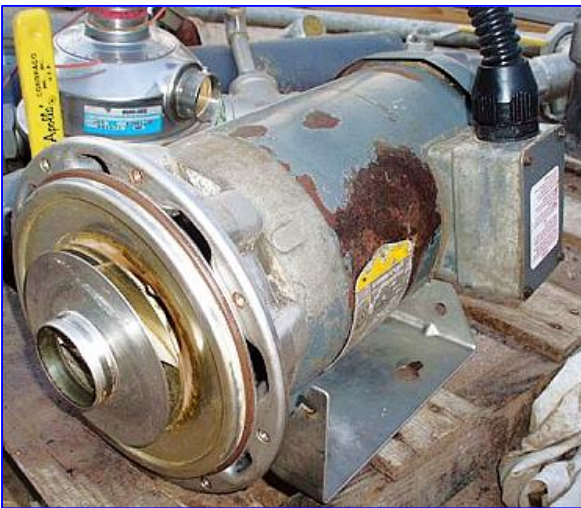
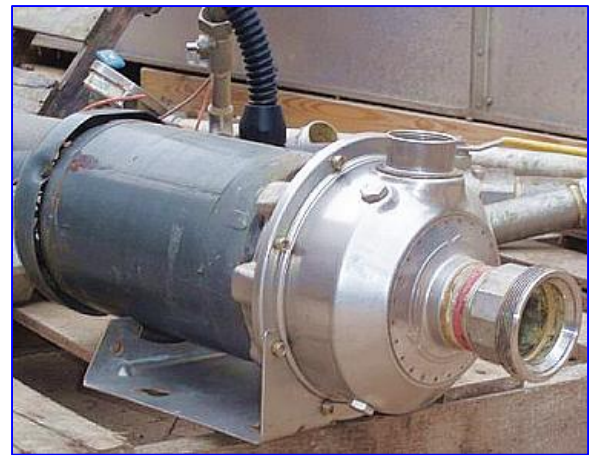
Mfg: ITT / Goulds / G&L Pumps

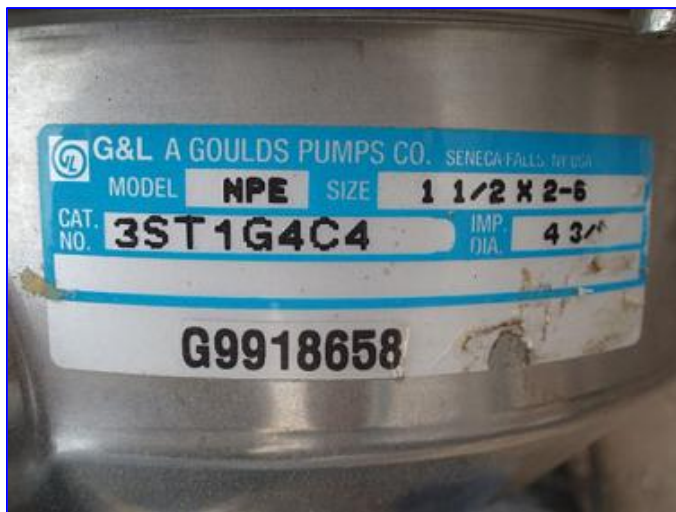
Model: NPE

Stock No. KAAM001.

Serial No. G9918658

ITT / Goulds / G&L NPE-Series Centrifugal Pump. Model: NPE. S/N: G9918658. Cat. No: 3ST1G4C4. 316L Stainless Steel. Size: 1.5x2-6. Capacity: 86 gpm @ 60 head feet (26 psi using specific gravity of water = 1). Displacement per Revolution: 0.024. Seal Option: John Crane Type 21, carbon/silicon-carbide, Viton elastomers, and 316 stainless metal parts. Impeller diameter: 4-3/8. Baldor Industrial Motor, 2 hp, 3450 rpm. 208-230/460 V, 8.2-5.2/2.7 amps, 60 Hz, 3 phase. Features include superior, complete AISI 316L stainless steel liquid handling components for corrosion resistance and improved strength and durability. The NPE close coupled, compact, flexible design saves space can be mounted horizontally or vertically, and simplifies maintenance. Inlets: (1) 2 in. dia. FNPT suction. Outlets: (1) 1 1/2 in. dia. FNPT discharge. Overall dimensions: 1 ft. 5 in. L x 9 in. W x 1 ft. 3 1/2 in. H.





**G&L A GOULDS PUMPS CO.** SENECA FALLS, NY USA  
**MODEL NPE** SIZE **1 1/2 X 2-6**  
**CAT. NO. 3ST1G4C4** IMP. DIA. **4 3/4"**

**G9918658**

**BALDOR**  
 INDUSTRIAL MOTOR  
 THREE PHASE

PEC	35F89W728	CONNECTION	LOW VOLTAGE
NAME	56J SER. F699		6 5 4
SIZE	2		9 8 7
HTS	208-230/460		3 2 1
SPS	6.2-5.4/2.7		LINE
HPM	3450		HIGH VOLTAGE
Z	60	PH 3 CLASS B	6 5 4
DES	B	CODE K	9 8 7
EFF.	80 %	PF 87 %	3 2 1
	40C AMB-CONT		LINE
	5FA 7.0-6.6/3.3		

BALDOR ELECTRIC CO. SMITH, ARK. MFD. U.S.A.