

- NOTES:
- SUCTION STOP VALVE & CHECK VALVE, DISCHARGE STOP VALVE, RELIEF PIPING & LIQUID PIPING MUST BE COMPLETELY SUPPORTED INDEPENDENTLY OF PACKAGE, COMPRESSOR MATING FLANGES MUST BE IN EXACT ALIGNMENT WITH FACES CONCENTRIC & PARALLEL WHEN ALL CAP SCREWS ARE REMOVED. IF NOT, SERIOUS MECHANICAL DISTORTION MAY OCCUR TO THE COMPRESSOR CASING WITH RESULTING DAMAGE TO THE BEARINGS, SEALS, ETC.
  - PROPER CLEARANCE MUST BE PROVIDED, AS SHOWN, TO SERVICE PACKAGE COMPONENTS WITHOUT INTERFERENCE FROM PIPING, ELECTRICAL CONDUIT, ETC.
  - A LEVEL FLOOR MOUNTING PAD MUST BE PROVIDED BY OTHERS, CAPABLE OF SUPPORTING THE OPERATING WEIGHT OF THE SCREW COMPRESSOR PACKAGE.
  - RELIEF LINE TO BE PIPED TO OUTSIDE ATMOSPHERE PER ANSI/ASHRAE, LATEST EDITION.
  - ALL DIMENSIONS INCLUDING THOSE ON FIELD CONNECTED NOZZLES ARE WITHIN  $\pm 3/4"$  TOLERANCE. IT IS RECOMMENDED THAT FIELD PIPING ALLOW FOR SOME PLAY IN FITTING PACKAGE NOZZLES, ESPECIALLY IF FIELD PIPING IS STARTED BEFORE UNIT IS IN PLACE.
  - DISCHARGE CHECK VALVE & SUCTION SPOOL PIECE WILL BE FURNISHED WITH A SLIP-ON FLANGE WHEN OPTIONAL FACTORY INSTALLED SUCTION AND DISCHARGE STOP VALVES ARE NOT PURCHASED, OR IF STOP VALVES ARE SHIPPED LOOSE. FIELD PIPING MUST BE ARRANGED TO ALLOW FOR CHECK VALVE SERVICING.
  - REMOVE VALVE BONNET/SEAT ASSEMBLY BEFORE WELDING VALVE TO SYSTEM PIPE WORK, OR RAISE VALVE STEM TO FULL OUT POSITION AND COOL VALVE WITH A DAMP RAG, TO AVOID DAMAGE TO VALVE SEAT.
  - REMOVE PANEL SHIPPING BOLTS AFTER SHIPMENT.
  - 3/4" PUMP-OUT CONNECTION PROVIDED ON SEPARATOR DISCHARGE LINE. VALVE SUPPLIED BY OTHERS.
  - RECOMMENDED UNIT ANCHORING  
 (4) 3/4"-10 NC HEX HD. BOLTS 2 1/2" LG., FLAT WASHER & TAPPED CONCRETE INSERT, NOT FURNISHED BY FES. CARRY FOUNDATION DOWN TO FIRM BEARING, TOP SURFACE MUST BE SMOOTH AND LEVEL. FOUNDATION PADS MAY BE CAST ON EXISTING FLOOR IN GOOD CONDITION AND SHOULD BE PINNED.
  - STANDARD.
  - OPTION.

MODEL	SUCTION DIMENSIONS										STD. SHIPPING & OPERATING WEIGHT LESS MOTOR & OPTIONS
	A	C	D	N	P	S	U	X	Y	Z	
110GM & 125GM	4	79 7/16	73 5/8	7 7/16	44 5/16	1/4	78 5/8	50 3/8	43 1/8	3/4	2340#
160GM	5	85 11/16	79 5/16	10 9/16	47 15/16	1 3/4	84 1/8	54 5/16	42 3/16	1	2990#

COOLER	COOLER DIMENSIONS							ADD FOR OIL COOLER
	H	J	L	M	R	T		
605	2	1	7 15/16	14 15/16	58 7/8	10 1/8	500#	
805	2	1	8 15/16	16 15/16	58 7/8	10 1/8	750#	
1005	3	1 1/2	10	21	60	10 11/16	1000#	

B	CHECK VALVE	STANDARD DISCHARGE DIMENSIONS					ADD FOR DISCHARGE SIZE
		E	F	G	V	W	
3	2	47 1/4	3	36 5/8	1 11/16	25 5/16	26#
	2 1/2	47 3/8	3	36 3/4	1 11/16	25 5/16	27#
	3	46 1/4	3	35 5/8	1 11/16	25 5/16	21#

MOTOR FRAME	HP	WEIGHT
365TS	100	680#
404TS	125	930#
405TS	150	1010#
444TS	200	1320#
445TS	250	1530#
	300	
447TSS	300	1790#

ADD FOR MOUNTED STOP VALVES	
4" SUCTION	50#
5" SUCTION	82#
3" DISCHARGE	36#

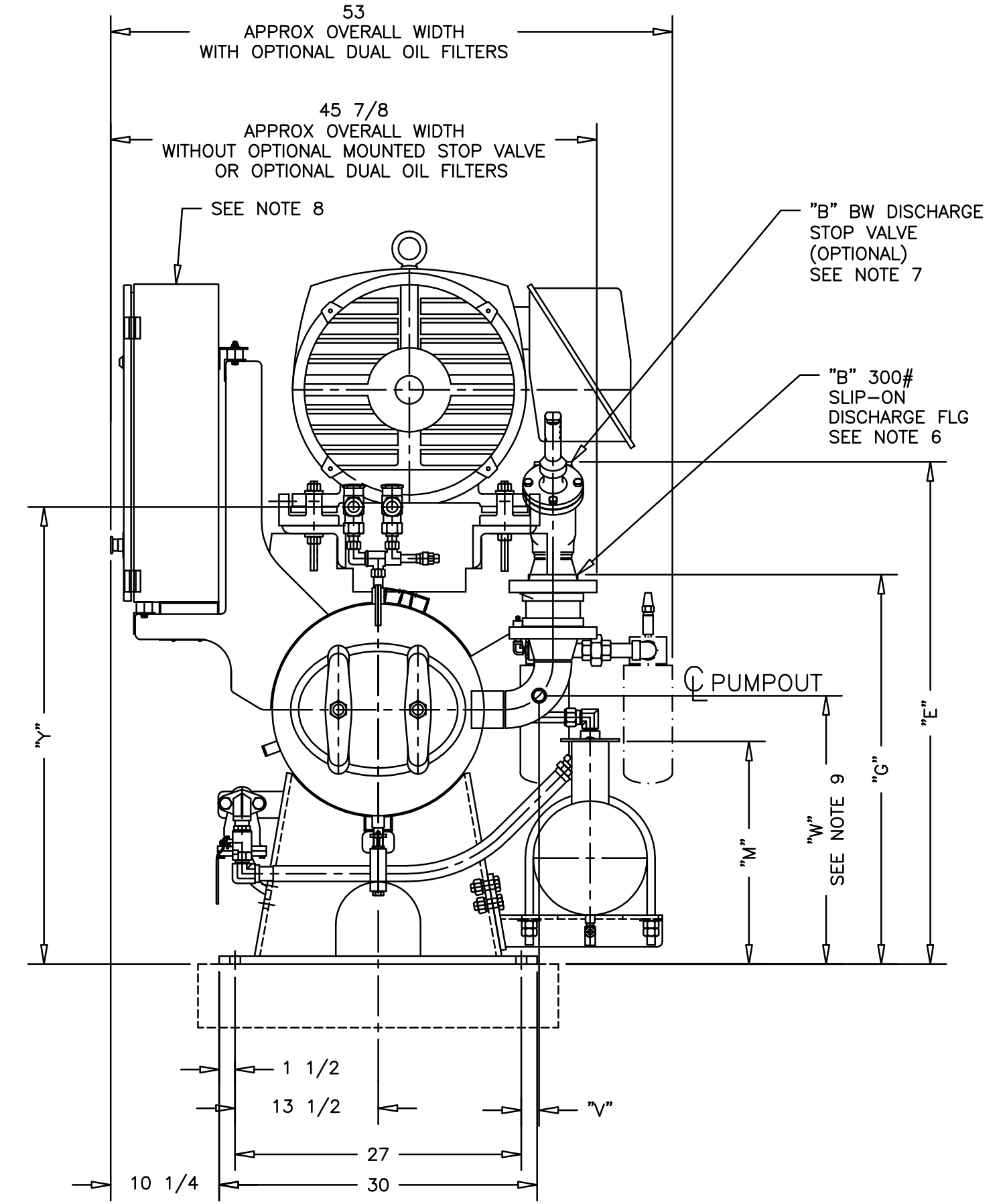
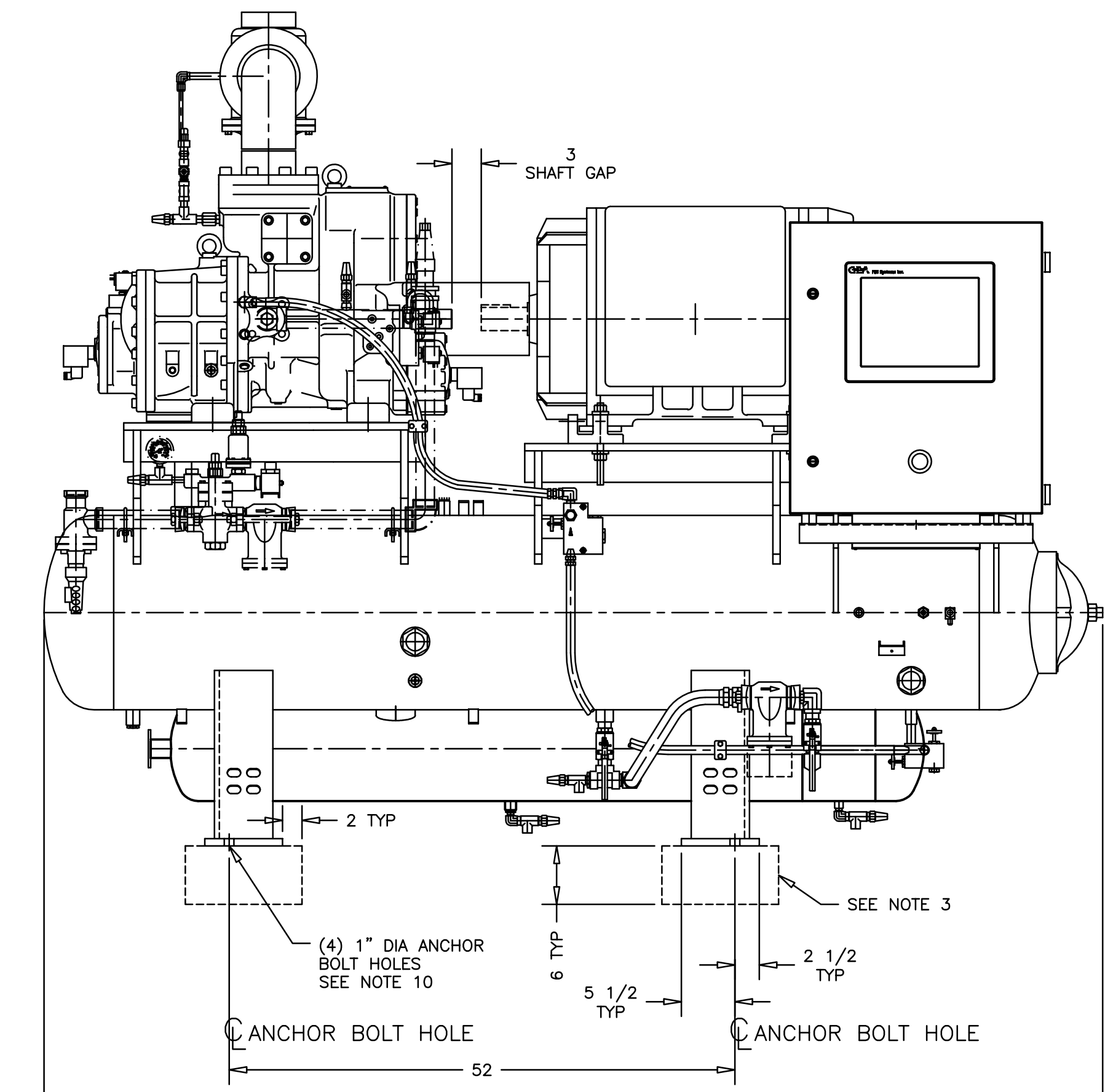
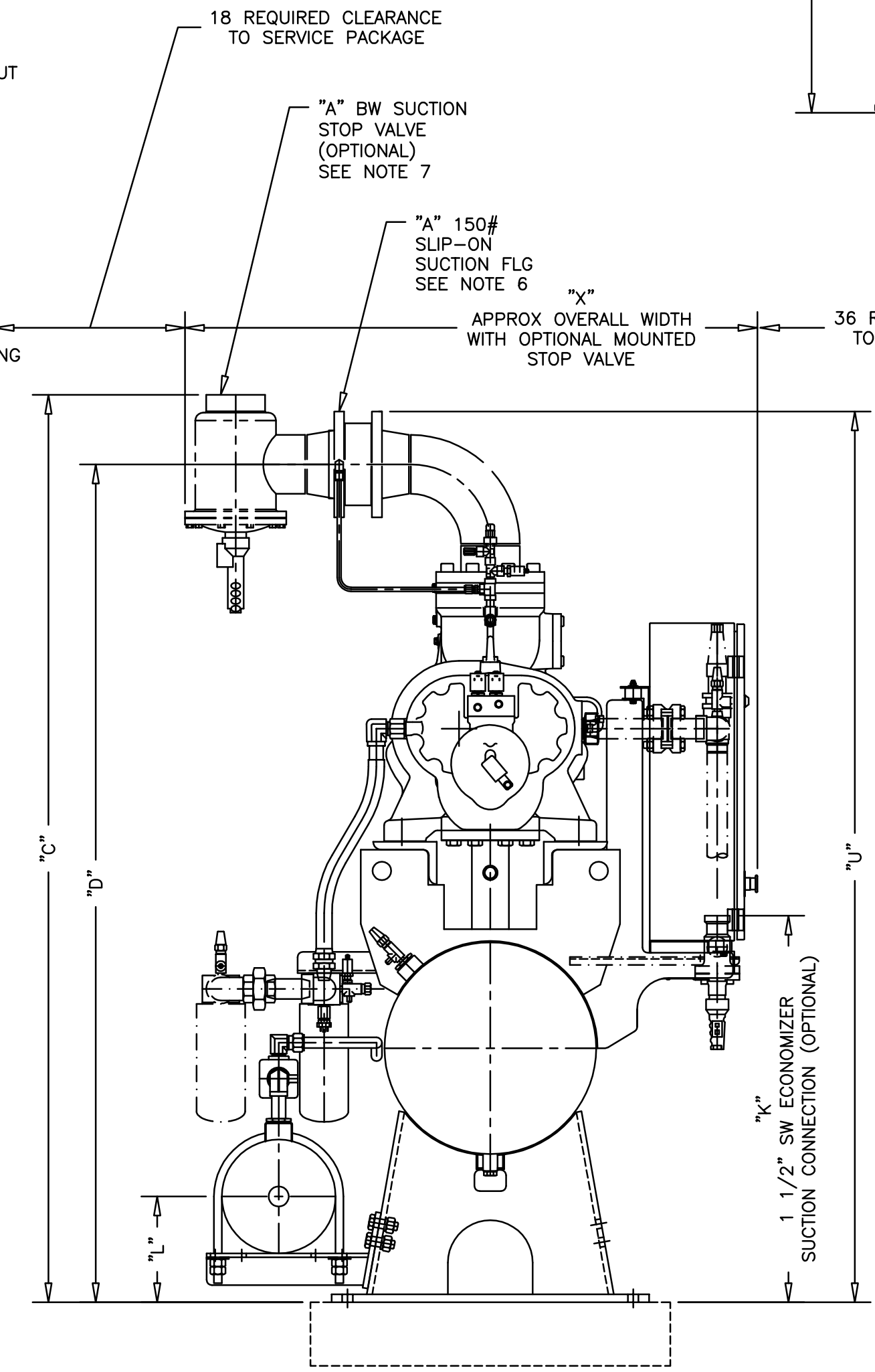
  

ADD FOR ECONOMIZER VALVE STATION	
	45#

ADD FOR DUAL OIL FILTERS	
	30#

ECONOMIZER VALVE STATION		
MODEL	K	WT
110GM & 125GM	36 3/8	35#
160GM	36 1/2	45#



18 REQUIRED CLEARANCE TO SERVICE PACKAGE

108 7/8 APPROX OVERALL LENGTH

36 REQUIRED CLEARANCE TO SERVICE PACKAGE

REV	DATE	REVISION	BY	AP	REV	DATE	REVISION	BY	AP	REV	DATE	REVISION	BY	AP	REV	DATE	REVISION	BY	AP	
A	05-15-06	GM REDESIGN REVISIONS PER ECN # 06-044	SAW	MCR	E	12-19-06	CHANGE MICRO III CONTROL PANEL TO GFORCE PER ECN 06-123	BSP	LNB											
B	06-23-06	REVISED SUCTION PRESSURE TRANSDUCER VALVE LOCATION PER ECN # 06-066	SAW	MCR	F	02-22-07	REVISED DUAL RELIEF VALVE OUTLET TO 3/4 PER ECN # 06-078	SAW	MCR											
C	07-20-06	REVISED ECONOMIZER PIPE FLANGE/VALVE LAYOUT AT COMPR. PORT "E" PER ECN # 06-082	SAW	MCR	G	03-12-07	REVISED OIL FILTER & HEADER PER ECN # 06-113	SAW	MCR											
D	09-08-06	REVISED DIMS PER ECN 06-102	SMG	LNB	H	06-06-07	ROTATED OIL FILL LOCATION NORTH 15° PER ECN # 07-097	SAW	MCR											

SPECIFICATIONS  
 UNLESS OTHERWISE SPECIFIED DIMENSIONS ARE IN INCHES  
 TOLERANCE = ± SEE NOTE 5  
 MATL =  
 WT. = SEE CHARTS  
 DO NOT SCALE



GENERAL ARRANGEMENT	
MODELS 110GM - 160GM HIGH STAGE	
TSOC R-717	
DATE 01-22-2006	DWG. NO. 011-02734
DWG. BY SMG	SHT. NO. 1 OF 1
APP. BY MCR	ORIG. NO. 011-02734
SCALE NO SCALE	