

Crepaco 10-Cylinder Reciprocating Compressor- 100 HP

Mfg: Crepaco

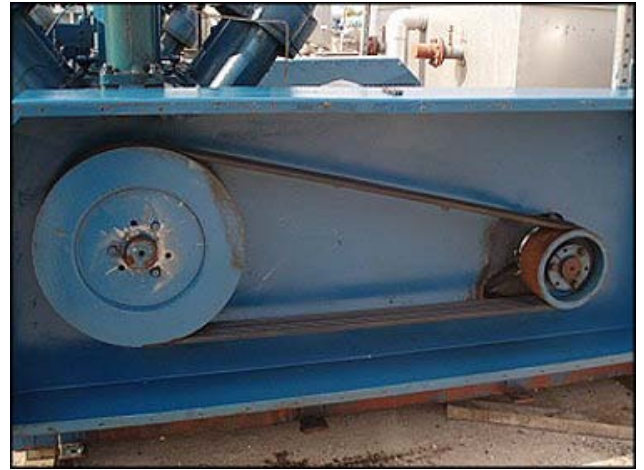
Model: KL-24

Stock No: LEEQ003

Serial No: A-250KL-24

(2) Crepaco 10-Cylinder Reciprocating Compressors- 100 HP. Model: KL-24. S/N's: A-250KL-24. Bore and stroke: 6-3/4 in. x 5 in. Allis-Chalmers Motor, 100 hp, 1770 rpm, 230/460 V, 238/116 amps, 60 Hz, 3 phase. Lincoln Motor, 100 hp, 1770 rpm, 230/460 V, 238/116 amps, 60 Hz, 3 phase. Driver pulley: 10-1/2 in. dia. Driven pulley: 1 ft. 9 in. dia. Pulley ratio: 0.5. Final rpm: 885. Inlet: (1) 5 in. dia. flanged port. Outlet: (1) 4 in. dia. flanged port. Overall dimensions: 10 ft. 1 in. L x 4 ft. 5 in. W x 6 ft. 1/2 in. H.







CREPAC
AN **APV** COMPANY

X. PERMISSIBLE [] P.S.
ANKCASE PRESS.

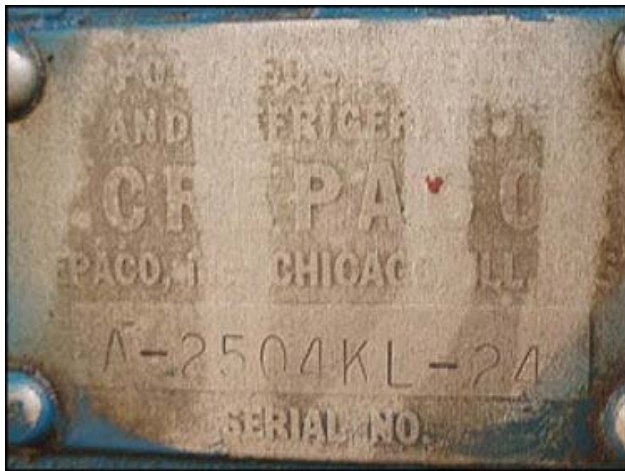
X. DESIGN [] P.S.
SSURE

X. [] YEAR OF
ED R.P.M. MFG. []

RIGERANT []

MODEL []

REPACQ, inc. CHICAGO, ILL. U.S.A.



ALLIS-CHALMERS
INDUCTION MOTOR
NORWOOD, OHIO • MADE IN U.S.A.

LOW VOLT CONN. 4 5 6
7 8 9
1 2 3

HIGH VOLT CONN. 4 5 6
7 8 9
1 2 3

SER. NO.	51-306-411	MODEL NO.	118
TYPE	RG	FRAME	410X411
N.P.	100	NEVA DESIGN	1
R.P.M.	1770	SERVICE FACTOR	1.16
VOLTS	230/460	HERTZ	60
AMPS.	232/116	PHASE	3
DUTY	CONT.	N.V.A. CODE	9
ENV. B.C.	80BC03JPP	TEMP.	40
PP. END. SRC.	65BC03JPP	OPERATING INSTRUCTIONS	51 X 9935
		CLASS INSULATION	18