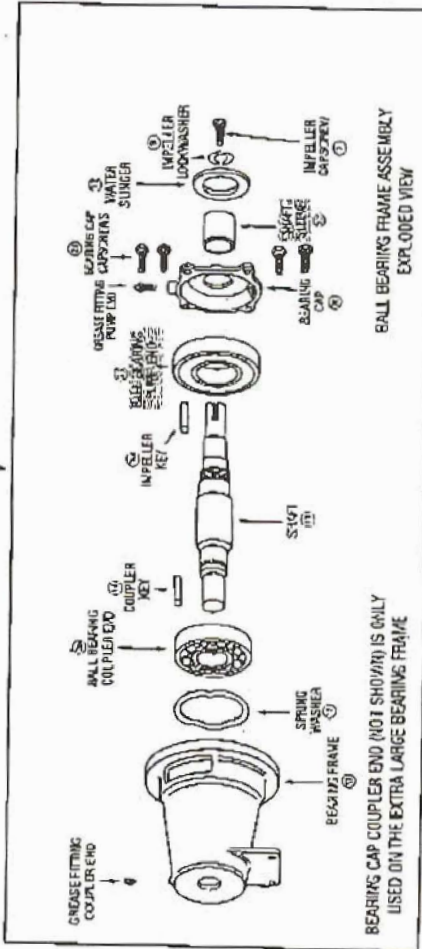
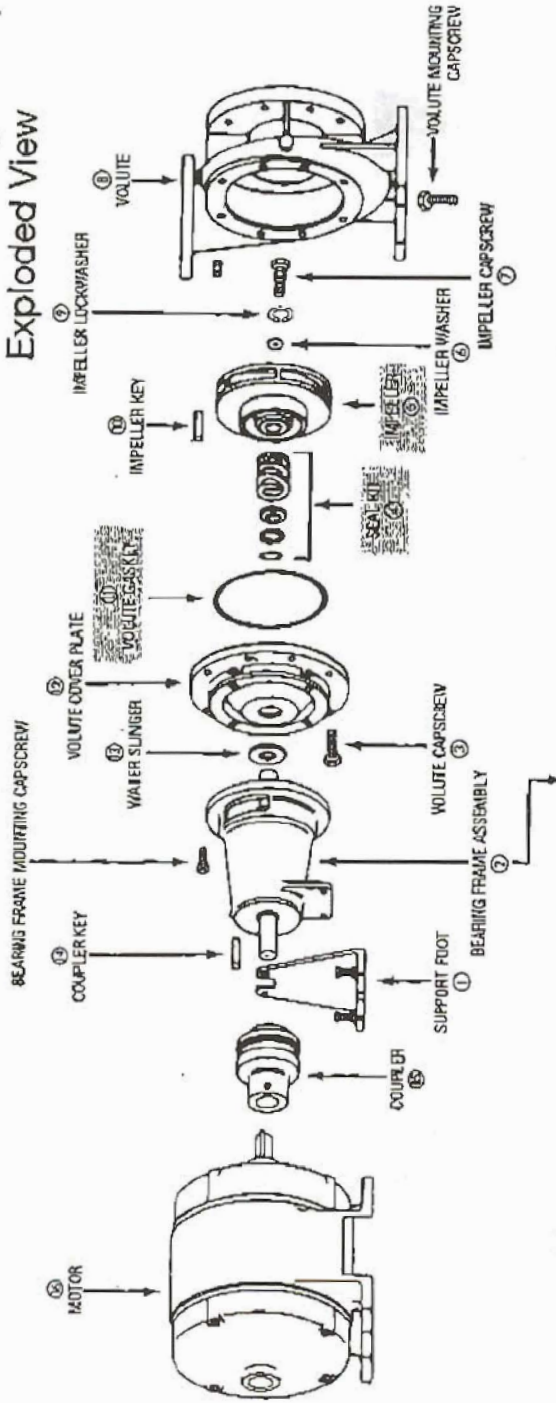


PARTS LIST CP207G-PL (CONTINUED)

SERIES 1510 PUMPS

# SERIES 1510 Standard Seal Design Pump Exploded View




USED ON LARGE BEARING FRAMES ONLY  
MANUF. BEFORE JUL. 1995 (ASSN)

BEARING LOCKWASHER P77375

BEARING LOCKNUT P76922

BEARING CAP COUPLER END (NOT SHOWN) IS ONLY  
USED ON THE EXTRA LARGE BEARING FRAME

 - Factory recommended  
spare parts.

PARTS LIST CP207G-PL (CONTINUED)

SERIES 1510 PUMPS

5BC

ITEM NO.	DESCRIPTION	PUMP CONSTRUCTION			
		BRONZE FITTED	BRONZE FITTED WITH WEAR RING	ALL IRON	ALL BRONZE
<b>Parts Common To Both Size Pumps</b>					
8	Volute	P43678	*P43663	P43678	
	Wear Ring	—	P49143	—	
	Volute Drain Plug (4)	P39040	P39040	P39050	
	Volute Capscrew (12)	P03470	P03470	P03470	
	Volute Gasket	P48890	P48600	P48690	
15	Coupler	See Coupler Selection Table, Page 48			
14	Coupler Key (Straight) Aug. 1989 (H98) & After	P49373	P49373	P49373	
14	Coupler Key (Woodruff) July 1989 (G98) & Before	H32600	H32600	H32600	
For ANSI/OSHA Coupling Guard & Bracket Kit Selection, See Chart on Page 49					
<b>Parts for Pumps With 1 1/2" Shaft At Seal</b>					
5	Impeller (Stator Diameter) 1 1/2" Full Dia	P50822	P50822	P50822	
6	Impeller Washer	P46380	P46380	P46381	
12	Volute Coverplate	186495	186495	186495	
12	Volute Coverplate - "F" Construction	P61451	P61451	NONE	
	Seal Kit	186882	186882	186882	
4	EPT Seal Kit	186861	186861	NONE	
2	Bearing Frame Assembly Consisting of:	185011	185011	185012	
17	Bearing Frame	P77103	P77103	P77103	
19 & 22	Shaft & Sleeve Kit	185308	185308	+P78827	
20	Bearing Cap	P75606	P75606	P75606	
25	Ball Bearing - Pump End	186002	186002	186002	
26	Ball Bearing - Coupler End	186001	186001	186001	
22	Shaft Sleeve	185140	185140	185141	
7	Impeller Capscrew	P52350	P52350	P52350	
9	Impeller Lockwasher	J23874	J23874	J23874	
10	Impeller Key (Straight) Aug. 1989 (H88) & After	P49369	P49369	P49369	
10	Impeller Key (Woodruff) July 1989 (G88) & Before	H32500	H32500	H32500	
18	Spring Washer	J92558	J92558	J92558	
21	Bearing Cap Capscrew (4)	J92291	J92291	J92291	
13	Water Slinger	P53550	P53550	P53550	
1	Support Foot - Motor Frames 218T-218T-254T	186911	186911	186911	
<b>Parts for Pumps With 1 1/2" Shaft At Seal</b>					
5	Impeller (Stator Diameter) 1 1/2" Full Dia	P50832	P50832	P50831	
6	Impeller Washer	P51230	P51230	P46382	
12	Volute Coverplate	P51540	P51540	P51540	
12	Volute Coverplate - "F" Construction	P51541	P51541	NONE	
	Seal Kit	186543	186543	186544	
4	EPT Seal Kit	185225	185225	NONE	
2	Bearing Frame Assembly Consisting of:	185014	185014	185015	
17	Bearing Frame	P77161	P77161	P77161	
19	Shaft	P79027	P79027	P79027	
20	Bearing Cap	P75612	P75612	P75612	
25	Ball Bearing - Pump End	186571	186571	186571	
26	Ball Bearing - Coupler End	186572	186572	186572	
22	Shaft Sleeve	185142	185142	185143	
7	Impeller Capscrew	P13800	P13800	P13800	
9	Impeller Lockwasher	J23875	J23875	J23875	
10	Impeller Key (Straight) Aug. 1989 (H90) & After	P49372	P49372	P49372	
10	Impeller Key (Woodruff) July 1989 (G90) & Before	H32700	H32700	H32700	
18	Spring Washer	J92560	J92560	J92560	
21	Bearing Cap Capscrew (4)	DJ0086	DJ0086	DJ0086	
13	Water Slinger	P53720	P53720	P53720	
1	Support Foot - Motor Frames 256T-284T	186908	186908	186908	

Not Offered

\* Includes wear ring.  
 + - Shaft only. Does not include sleeve or retaining compound.  
 - - Factory recommended spare parts.  
 \* Consult Factory for Delivery.