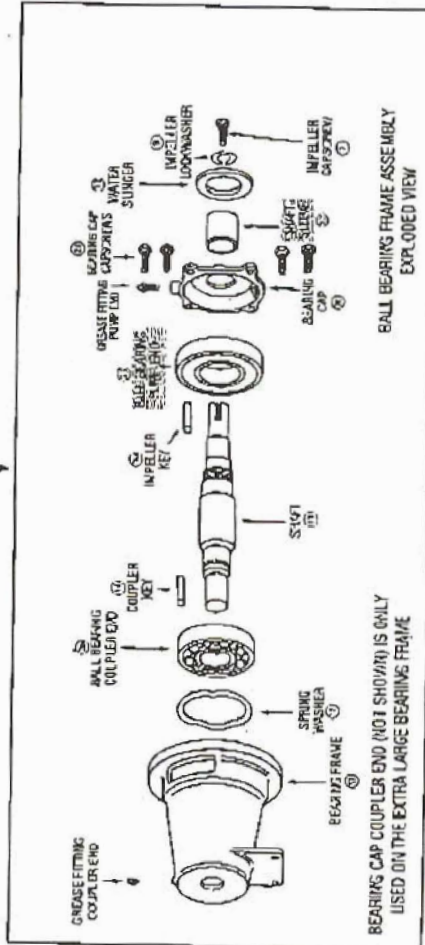
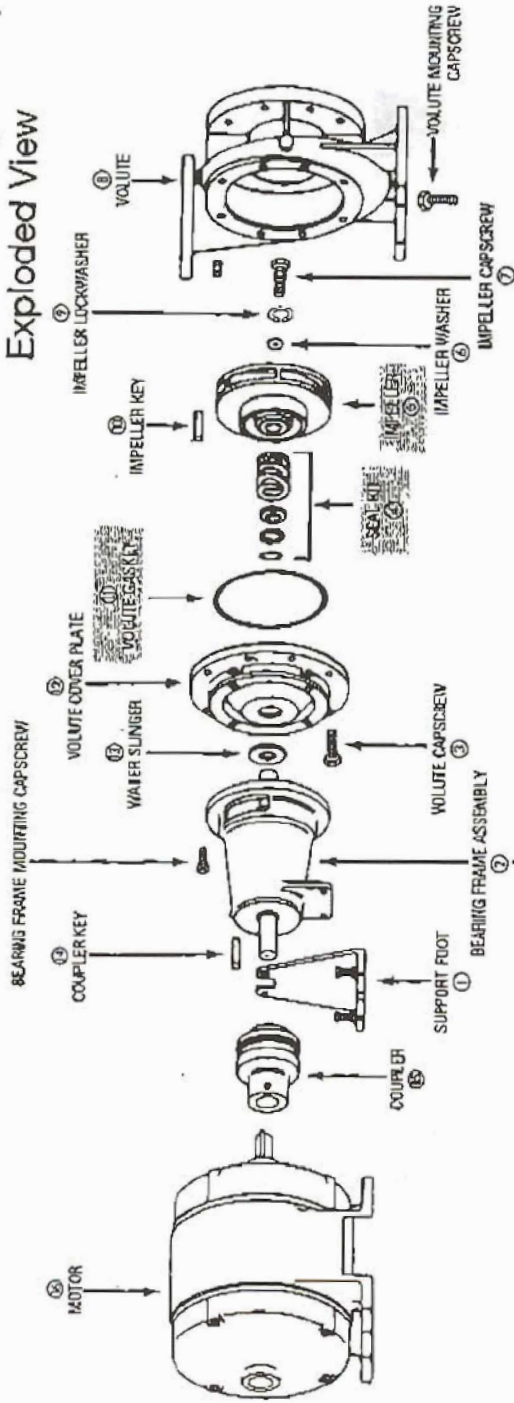


PARTS LIST CP207G-PL (CONTINUED)

SERIES 1510 PUMPS


# SERIES 1510 Standard Seal Design Pump Exploded View



USED ON LARGE BEARING FRAMES ONLY  
 MANUF. BEFORE JUL. 1995 (ASSY)  
 BEARING LOCKWASHER P77375  
 BEARING LOCKNUT P76922

BALL BEARING FRAME ASSEMBLY  
EXPLODED VIEW

BEARING CAP COUPLER END (NOT SHOWN) IS ONLY  
USED ON THE EXTRA LARGE BEARING FRAME

 - Factory recommended spare parts.

PARTS LIST CP207G-PL (CONTINUED)

SERIES 1510 PUMPS

5BC

| ITEM NO.   | DESCRIPTION                                      | PUMP CONSTRUCTION                    |                              |          |            |
|--|--|--------------------------------------|------------------------------|----------|------------|
|  |  | BRONZE FITTED                        | BRONZE FITTED WITH WEAR RING | ALL IRON | ALL BRONZE |
| <b>Parts Common To Both Size Pumps</b>                                     |  |                                      |                              |          |            |
| 8  | Volute   | P43678                               | *P43663                      | P43678   |            |
|  | Wear Ring  | —                                    | P49143                       | —        |            |
|  | Volute Drain Plug (4)                            | P39040                               | P39040                       | P39050   |            |
|  | Volute Capscrew (12)                             | P03470                               | P03470                       | P03470   |            |
|  | Volute Gasket                                    | P48890                               | P48600                       | P48690   |            |
| 15   | Coupler  | See Coupler Selection Table, Page 48 |                              |          |            |
| 14   | Coupler Key (Straight) Aug. 1989 (H98) & After   | P49373                               | P49373                       | P49373   |            |
| 14   | Coupler Key (Woodruff) July 1989 (G98) & Before  | H32600                               | H32600                       | H32600   |            |
| For ANSI/OSHA Coupling Guard & Bracket Kit Selection, See Chart on Page 49 |  |                                      |                              |          |            |
| <b>Parts for Pumps With 1 1/2" Shaft At Seal</b>                           |  |                                      |                              |          |            |
| 5  | Impeller (Stator Diameter) 1 1/2" Full Dia       | P50822                               | P50822                       | P50822   |            |
| 6  | Impeller Washer                                  | P46380                               | P46380                       | P46381   |            |
| 12   | Volute Coverplate                                | 186495                               | 186495                       | 186495   |            |
| 12   | Volute Coverplate - "F" Construction             | P61451                               | P61451                       | NONE     |            |
|  | Seal Kit   | 186882                               | 186882                       | 186882   |            |
| 4  | EPT Seal Kit                                     | 186861                               | 186861                       | NONE     |            |
| 2  | Bearing Frame Assembly Consisting of:            | 185011                               | 185011                       | 185012   |            |
| 17   | Bearing Frame                                    | P77103                               | P77103                       | P77103   |            |
| 19 & 22  | Shaft & Sleeve Kit                               | 185308                               | 185308                       | +P78827  |            |
| 20   | Bearing Cap                                      | P75606                               | P75606                       | P75606   |            |
| 25   | Ball Bearing - Pump End                          | 186002                               | 186002                       | 186002   |            |
| 26   | Ball Bearing - Coupler End                       | 186001                               | 186001                       | 186001   |            |
| 22   | Shaft Sleeve                                     | 185140                               | 185140                       | 185141   |            |
| 7  | Impeller Capscrew                                | P52350                               | P52350                       | P52350   |            |
| 9  | Impeller Lockwasher                              | J23874                               | J23874                       | J23874   |            |
| 10   | Impeller Key (Straight) Aug. 1989 (H88) & After  | P49369                               | P49369                       | P49369   |            |
| 10   | Impeller Key (Woodruff) July 1989 (G88) & Before | H32500                               | H32500                       | H32500   |            |
| 18   | Spring Washer                                    | J92558                               | J92558                       | J92558   |            |
| 21   | Bearing Cap Capscrew (4)                         | J92291                               | J92291                       | J92291   |            |
| 13   | Water Slinger                                    | P53550                               | P53550                       | P53550   |            |
| 1  | Support Foot - Motor Frames 218T-218T-254T       | 186911                               | 186911                       | 186911   |            |
| <b>Parts for Pumps With 1 1/2" Shaft At Seal</b>                           |  |                                      |                              |          |            |
| 5  | Impeller (Stator Diameter) 1 1/2" Full Dia       | P50832                               | P50832                       | P50831   |            |
| 6  | Impeller Washer                                  | P51230                               | P51230                       | P46382   |            |
| 12   | Volute Coverplate                                | P51540                               | P51540                       | P51540   |            |
| 12   | Volute Coverplate - "F" Construction             | P51541                               | P51541                       | NONE     |            |
|  | Seal Kit   | 186543                               | 186543                       | 186544   |            |
| 4  | EPT Seal Kit                                     | 185225                               | 185225                       | NONE     |            |
| 2  | Bearing Frame Assembly Consisting of:            | 185014                               | 185014                       | 185015   |            |
| 17   | Bearing Frame                                    | P77161                               | P77161                       | P77161   |            |
| 19   | Shaft  | P79027                               | P79027                       | P79027   |            |
| 20   | Bearing Cap                                      | P75612                               | P75612                       | P75612   |            |
| 25   | Ball Bearing - Pump End                          | 186571                               | 186571                       | 186571   |            |
| 26   | Ball Bearing - Coupler End                       | 186572                               | 186572                       | 186572   |            |
| 22   | Shaft Sleeve                                     | 185142                               | 185142                       | 185143   |            |
| 7  | Impeller Capscrew                                | P13800                               | P13800                       | P13800   |            |
| 9  | Impeller Lockwasher                              | J23875                               | J23875                       | J23875   |            |
| 10   | Impeller Key (Straight) Aug. 1989 (H90) & After  | P49372                               | P49372                       | P49372   |            |
| 10   | Impeller Key (Woodruff) July 1989 (G90) & Before | H32700                               | H32700                       | H32700   |            |
| 18   | Spring Washer                                    | J92560                               | J92560                       | J92560   |            |
| 21   | Bearing Cap Capscrew (4)                         | DJ0086                               | DJ0086                       | DJ0086   |            |
| 13   | Water Slinger                                    | P53720                               | P53720                       | P53720   |            |
| 1  | Support Foot - Motor Frames 256T-284T            | 186908                               | 186908                       | 186908   |            |

Not Offered

\* Includes wear ring.  
 + - Shaft only. Does not include sleeve or retaining compound.  
 - - Factory recommended spare parts.  
 \* Consult Factory for Delivery.