

1986 Sabroe Reciprocating Compressor – 250 hp

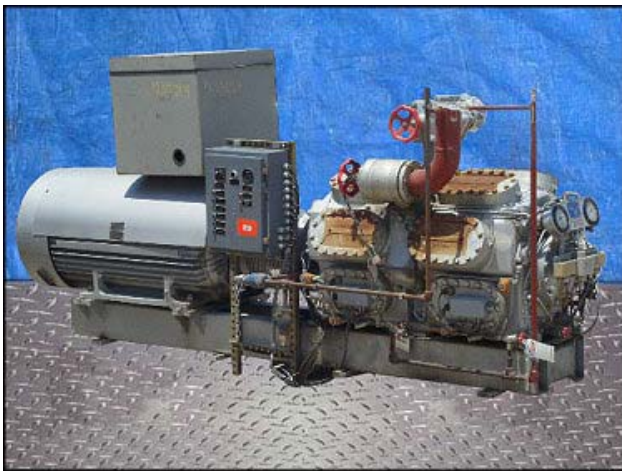
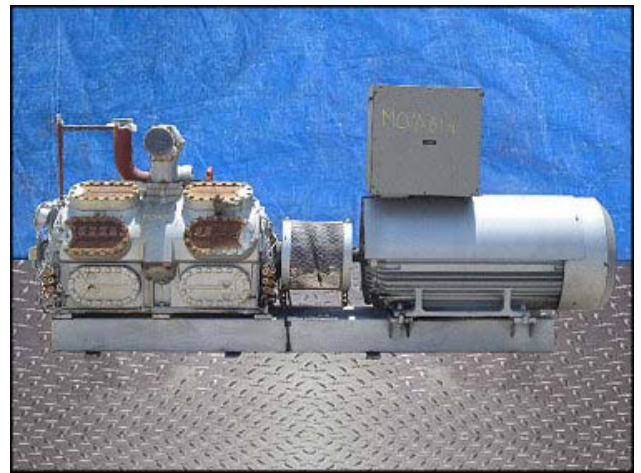
Mfg: Sabroe

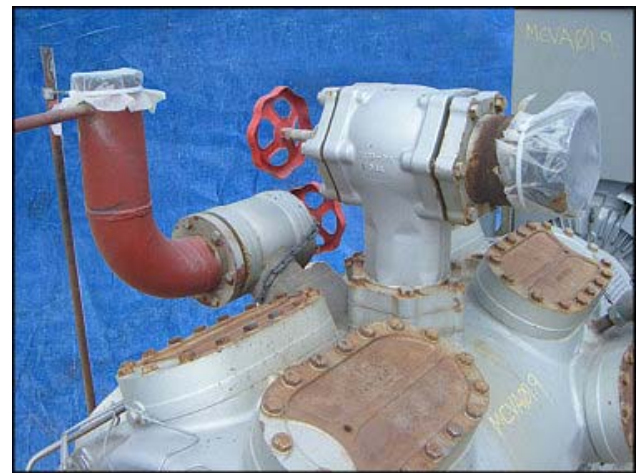
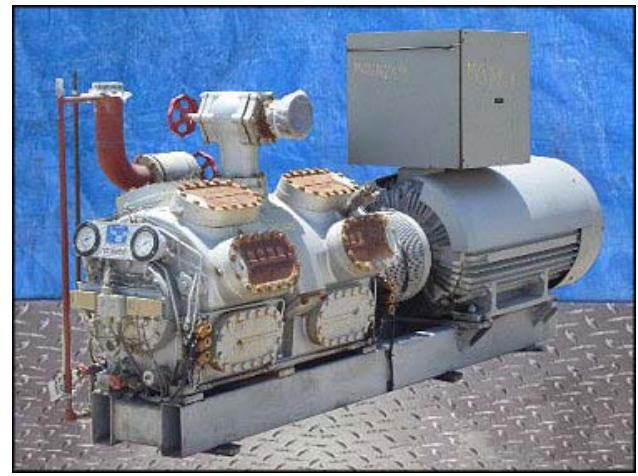
Model: SMC 116L

Stock No: MCVA01.9

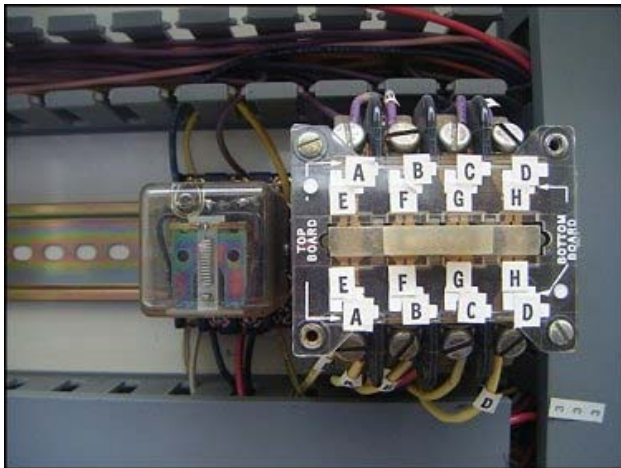
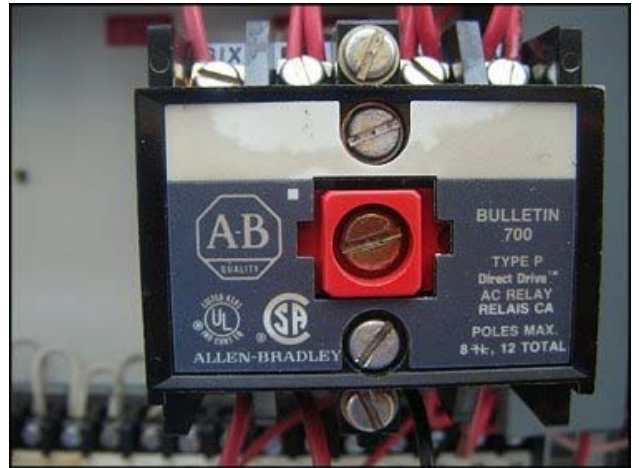
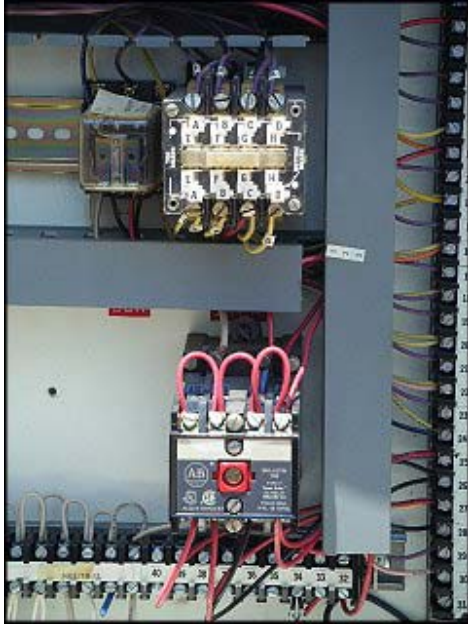
Serial No:

1986 Sabroe Ammonia Reciprocating Compressor. Model: SMC 116L. Shop #: 83169. Refrigerant: R717. Approximately 150 TR @ 95° F CT / 17° F SST (NH3) @ 1,180 RPM. Swept volume at max. rpm (1500 rpm): 666 cfm. Crankcase pressure: 261 psig. Max. design pressure: 610/305 psig. Sabroe relief valve set point: 261 psi (18 bar). Hoffman UL approved watertight enclosure housing: Allen Bradley bulletin 700 relay, A300 contactor, small 120 V, 60Hz. relay, Cramer hr. meter, Auto/off/hand percent load rotary switch, and percent load indicator lights. Toshiba World Energy Series Motor. 250 hp, 1180 rpm, 2,300/4,160 V, 62/34 amps, 60 Hz, 3 phase. Sabroe SMC 100 reciprocating compressors are ideal for use in medium-size industrial and marine refrigeration installations. Outlets: (1) 6 in. port, (1) ½ in. pipe, (1) ¾ in. pipe, / (1) 4 in. port, (1) ½ in. FNPT. Overall dimensions: 11 ft. L x 3 ft. 9 in. W x 5 ft. H. Run time: 22929.9 hrs.









TYPE 12 & TYPE 13 ENCLOSURE

USE ONLY THE FOLLOWING WATERTIGHT CONDUIT HUBS FOR CONNECTING CONDUIT TO THIS ENCLOSURE: MYERS ELECTRIC PRODUCTS INC. CAT. NO. ST-1, ST-2, ST-3, ST-4, ST-5, ST-6, ST-7, ST-8, ST-9, ST-10, ST-11, & ST-12

E 12 & TYPE 13 ENCLOSURE

USE ONLY THE FOLLOWING WATERTIGHT CONDUIT HUBS FOR CONNECTING CONDUIT TO THIS ENCLOSURE: MYERS ELECTRIC PRODUCTS INC. CAT. NO. ST-1, ST-2, ST-3, ST-4, ST-5, ST-6, ST-7, ST-8, ST-9, ST-10, ST-11, & ST-12

87% AD

UL UNDERWRITERS LABORATORIES
INDUSTRIAL CONTROL
NO. M-92 100% LOAD
Hoffman
HOFFMAN ENGINEERING COMPANY
ANDOVER, MASSACHUSETTS U.S.A.

22Q3CA120
120V 50/60HZ
J86

GM Eagle Signal
Division of GM

Contact Rating:
8 Amps, 28 Vdc, 250 Vdc
1.4 hp, 250 VA, 125 Vdc
1.2 hp, 240 VA, 250 Vdc

LP MP55A

Danfoss
MADE IN DENMARK

DIFFERENTIAL PRESSURE CONTROL
Type MP

OIL

Rückstellknopf nicht drücken.
Schaden am Verdichter sonst möglich. Betriebsanweisung (Instruktion) lesen

Do not press reset button.
See operating instructions to avoid compressor damage.

Ne pas réarmer.
Consulter les instructions pour éviter d'endommager le compresseur.

SABROE
AARHUS DENMARK

Type **SMD 116-L** Refrigerant **R 717**
Shop No. **83169** Year **1936**
Max. Speed **1100** r p m
Swept Volume **1.2** cfm
Max. Crankcase Press. **261** psig
Max. design Press. **610/315** psig

SMD 116-L Refrigerant **R 717**
No. **83169** Year **1936**
Speed **1100** r p m
Swept Volume **1.2** cfm
Crankcase Press. **261** psig
Max. design Press. **610/315** psig

Lubricate, during running, until grease exudes through the valve opening. The quantity of lubricant indicated on the following instruction should be used.

Load side and Opposite side	80 G
Interval: Every	390 days if in use 8hr/day.
Every	130 days if in use 24hr/day.
Grease	ALVANIA NO. 2
After overhaul, Approx.	400 G for load side.
Approx.	300 G for opposite side.

1443-06

Toshiba WORLD ENERGY SERIES
3-PHASE INDUCTION MOTOR

Grease **ALVANIA NO. 2**
After overhaul, Approx. **400 G** for load side.
Approx. **300 G** for opposite side.
1443-06

Toshiba WORLD ENERGY SERIES
3-PHASE INDUCTION MOTOR

HP	MODEL NO.	FRAME
POLES	TYPE	SERVICE FACTOR
VOLTS	FORM	MAX. AMB.
Hz	RPM	DRIVE END
AMP.	TIME RATING	NO. OPP. END
DESIGN		SERIAL NO.

Toshiba INTERNATIONAL CORPORATION HOUSTON TEXAS
MADE IN JAPAN