

TAG SHIPMENT: PO# 14894

ADD CATWALK/HANDRAIL WEIGHT: 3505 LBS. (LADDER(S) INCLUDED) TO OPERATING WEIGHT ON FOUNDATION DRAWING	MAX. CONCENTRATED CATWALK LOAD WEIGHT: 300 LBS./LINEAR FT. MAX UNIFORM CATWALK LOAD WEIGHT: 1000 LBS./LONG OR SHORT SIDE	COIL TO BE NITROGEN CHARGED WITH 25 PSIG BEFORE SHIPMENT.
---	---	---

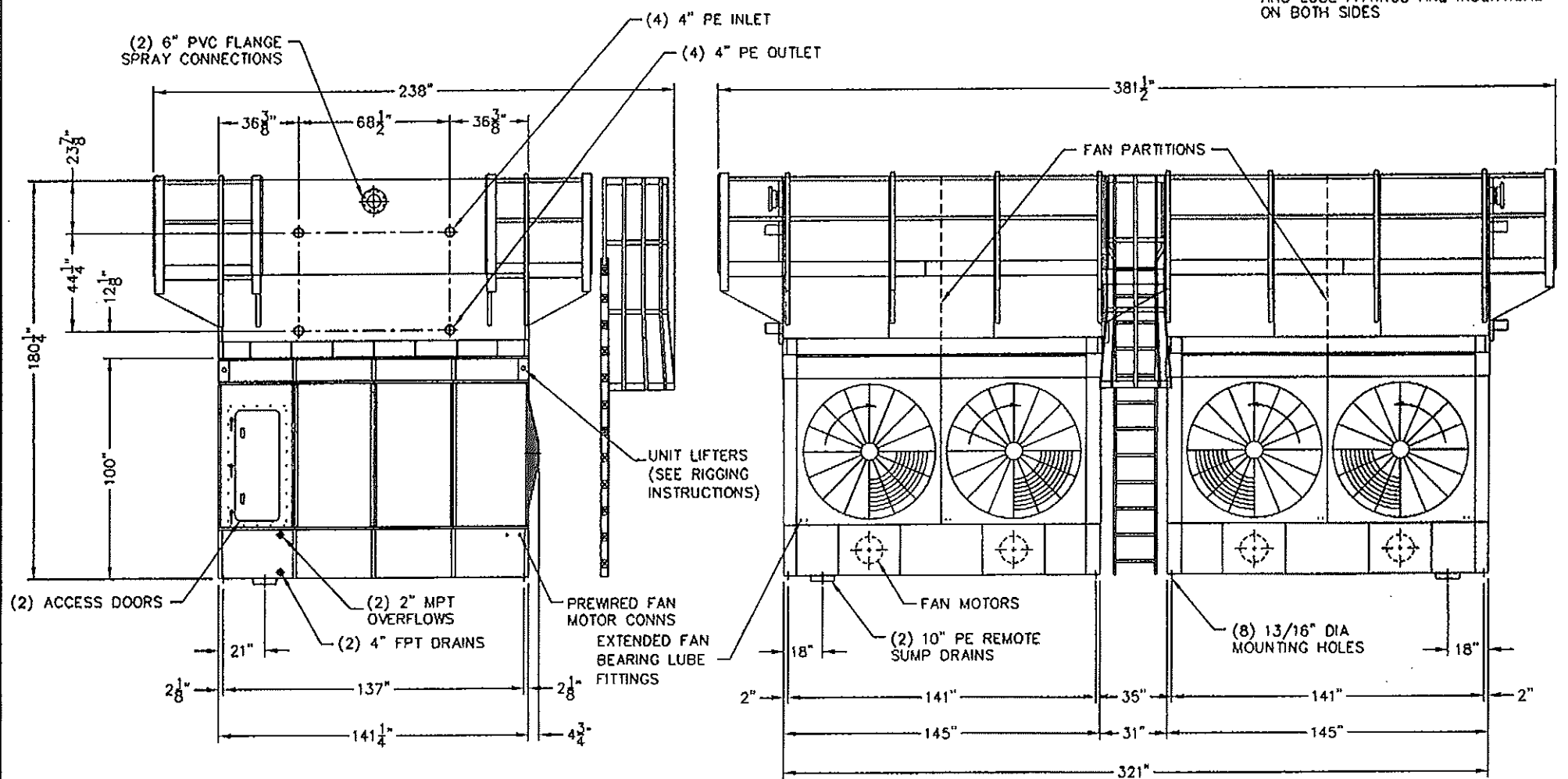
INCLUDED OPTIONS: .060" TUBE COIL; OVERSIZED HINGED ACCESS DOOR; INDIVIDUAL FAN DRIVES & PARTITIONS; PREM EFFCY RELIANCE FAN MOTORS; PRESSURE GAUGES MOUNTED ON EACH FLANGED WATER SPRAY INLET CONNECTIONS; SERVICE PLATFORM W/LADDER & CAGE

STANDARD UNIT DATA:  
CASING: HDG AFTER FAB  
REMOTE: 1200 GPM @ 2.0 PSI  
FAN MOTOR: (4) 5 HP TE 1800 RPM  
200/208-3-60 184T FRAME E+  
FOUNDATION LAYOUT: 4200228

PERFORMANCE DATA:  
8442.6 MBH THR @ 78F WB  
95F COND  
R-717; 0" ESP  
COIL VOLUME: 131.84 CU. FT.  
DESIGN PRESSURE 300 PSI

FRICK SO# 283646		CUSTOMER PO# 14894									
IMECO SO# 47750		SCALE: NONE									
DATE: 3/14/06		NO. REQD: 1 END TO END									
DRAWN BY: JRS		CHKD BY:									
APVD BY:		CUSTOMER									
FRICK COMPANY		J.P. KEMP CO, INC.									
MODEL		DRAWING NO.									
XLP XL-850-2		477500100									
EVAP. CONDENSER		1/1									
<table border="1"> <thead> <tr> <th>REV</th> <th>DESCRIPTION</th> <th>DATE</th> <th>BY</th> </tr> </thead> <tbody> <tr> <td>A</td> <td>REVISED FAN VOLTAGE FROM 460</td> <td>3/28/06</td> <td>JRS</td> </tr> </tbody> </table>				REV	DESCRIPTION	DATE	BY	A	REVISED FAN VOLTAGE FROM 460	3/28/06	JRS
REV	DESCRIPTION	DATE	BY								
A	REVISED FAN VOLTAGE FROM 460	3/28/06	JRS								

NOTE: THE QUANTITY OF FANS, FAN MOTORS AND LUBE FITTINGS ARE IDENTICAL ON BOTH SIDES



TAG SHIPMENT: PO# 12163

INCLUDED OPTIONS: .060" TUBE COIL; PREM EFFCY FAN MOTORS; INDIVIDUAL FAN DRIVES & PARTITIONS; OVERSIZED ACCESS DOORS; SERVICE PLATFORM W/LADDER & CAGE

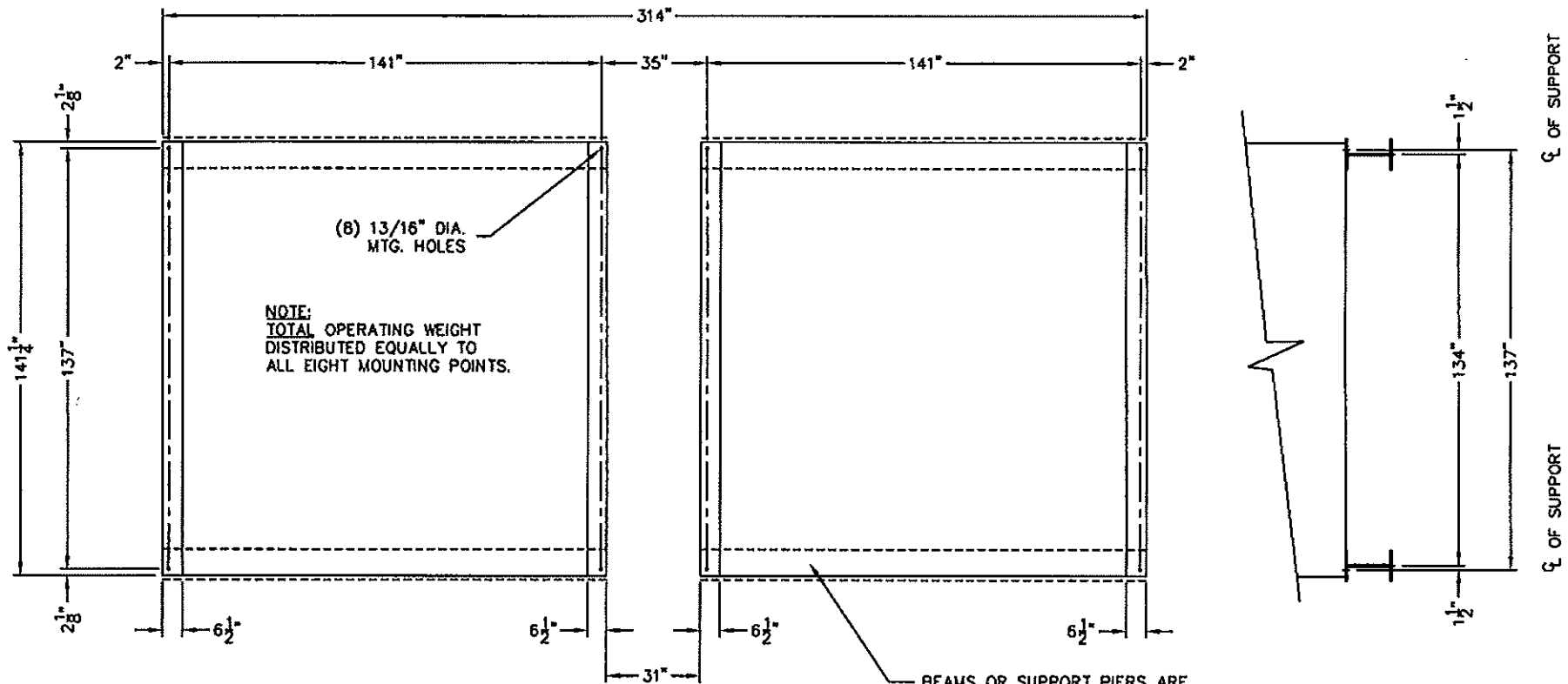
COIL TO BE NITROGEN CHARGED WITH 25 PSIG BEFORE SHIPMENT.

**STANDARD UNIT DATA:**  
 CASING: HDG AFTER FAB  
 REMOTE: 1200 GPM @ 2.0 PSI  
 FAN MOTOR: (4) 5 HP TE 1800 RPM  
 200/208-3-60 184T FRAME E+  
 FOUNDATION LAYOUT: 4200228

**PERFORMANCE DATA:**  
 8442.6 MBH THR @ 78F WB  
 95F COND  
 R-717; 0" ESP  
 COIL VOLUME: 131.84  
 DESIGN PRESSURE 300 PSI

FRICK SO# 281810		CUSTOMER PO# -----	
IMECO SO# 40104		SCALE: NONE	
DATE: 4/12/04		NO. REQ: 1 END TO END	
DRAWN BY: JRS		CHKD BY:	
APVD BY:		CUSTOMER	
A REV VOLTAGE FROM 460 PER OUST REQ 6/11/04 JRS		<b>FRICK COMPANY</b> <b>J.P. KEMPF</b>	
LTR	DESCRIPTION		
		MODEL	DRAWING NO.
		XLP XL-850-2	401040100
		EVAP. CONDENSER	1/1

DO NOT SCALE PRINT  
 WORK TO DIMENSIONS  
 ALL DIMENSIONS  
 ARE OUTSIDE UNLESS  
 OTHERWISE SPECIFIED



NOTE:  
BEAMS OR SUPPORT PIERS SHOULD BE SIZED IN ACCORDANCE WITH STANDARD ENGINEERING PRACTICES. BEAM DEFLECTION SHOULD NOT EXCEED 1/360 OF SPAN, NOT TO EXCEED 1/2 INCH. IF ISOLATORS ARE FURNISHED BY OTHERS THEY MUST BE PLACED UNDER THE BEAMS WHICH RUN THE FULL LENGTH OF UNIT.

COIL TYPE	UNIT SHIPPING	UNIT OPERATING	HEAVIEST SECTION	REMOTE OPERATING
TUBE	39,770 LBS	55,934 LBS	15,085 LBS	47,255 LBS
SCH 40	55,240 LBS	71,404 LBS	22,820 LBS	62,725 LBS

				<b>Frigid Coil/Imeco</b> <sup>®</sup>	
				YORK INTERNATIONAL	
DRAWN BY: J STEWART		SCALE: NONE			
DATE: 9/13/01		CHKD BY:		APVD BY:	
DRAWING TITLE				DRAWING NO.	
FOUNDATION LAYOUT XLP XL-850-2 E/E				4200228	
LTR	DESCRIPTION	DATE	BY	1/1	
REVISIONS					
THIS DOCUMENT IS THE PROPERTY OF FRIGID COIL/MECO AND MAY NOT BE REPRODUCED OR USED FOR OTHER PURPOSES WITHOUT WRITTEN PERMISSION.					