

Dunham-Bush Screw Compressor Package – 200 HP

Mfg: Dunham-Bush

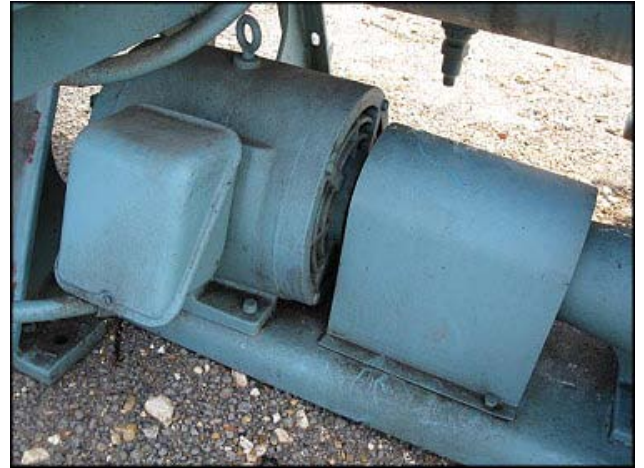
Model: 1615DHR 4 VEOEM 0010

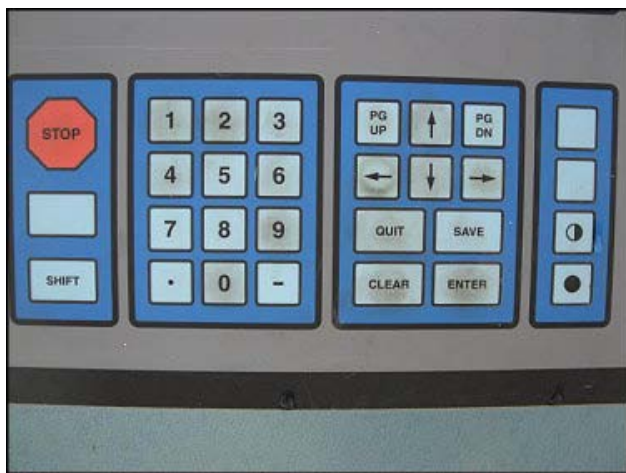
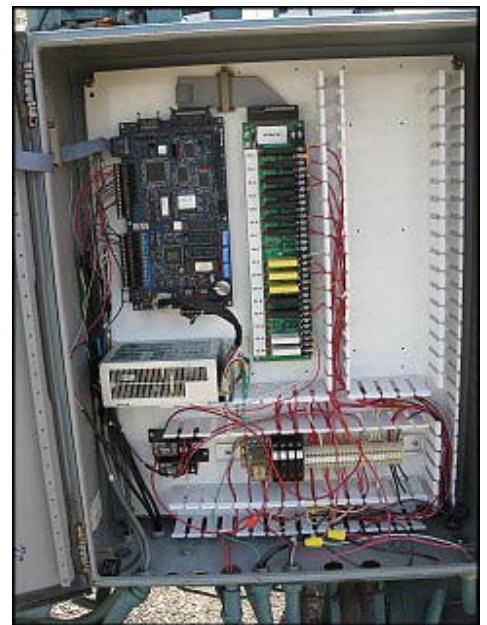
Stock No: MDPK356.80

Serial No: 93F800111D

Dunham-Bush Compressor Package. Model / part no: 1615DHR 4 VEOEM 0010. S/N: 93F800111D. Refrigerant: last used with ammonia(R-717) producing 140 tons at 161.5 bhp with a 20°F suction temperature, 95°F condensing temperature, and 10°F liquid subcooling and Rated for use with Freon under same conditions at 131 tons and 151 bhp. Compressor Vi: 2.4, design pressure: high side 350 PSIG, low side 250 PSIG. Toshiba World Energy Series motor: model: B2002VGG3U3. Serial no. 90001031. Type TIKK form: VCK1. 200 HP, 230/460V, 3540 rpm, 60 Hz. Frick separator: shell / Head .375 in., MAWP: 300 PSIG at -20°F to 200°F. MAWT: -50°F. Material of construction: SA53-S-B. (2) Hansen pressure relief valve: cat no. H5601, air capacity: 768 scfm, 250 PSI, size: ½ in. 1 in. out, serial no. 10B09 / 02B10. M&M Refrigeration control panel. Model: retrofit idr. Serial no. 00M-179-0230J. 120 V, 50/60Hz. Hoffman Enclosures, Inc. Industrial issue No: A-1178, cat. No. C-SD30248/SPL. Enclosure 4,12. Overall dimensions: 11 ft. 8-1/2 in. L x 3 ft. 9 in. W x 6 ft. 2 in. H.







MODEL
RETROFTI IDR

SERIAL #
00m-179-0230J

VOLTAGE/FREQ.
120/ 1/ 50, 60

MAX. FLA
36

UL Underwriters Laboratories Inc. LISTED

ENCLOSED INDUSTRIAL CONTROL PANEL
No. AN- 2887 15

- Type I Enclosure
- Wire w/copper stranded wire for insulation
- I/O terminal tightening torque
- Terminal Block tightening torque 6-14#in

Hoffman Enclosures Inc.
2100 Hoffman Way
Anoka, MN 55303-1745
(763) 422-2211 Tel.
www.hoffmanonline.com

To maintain the environmental rating of this enclosure, install in any openings only UL listed or recognized conduit hubs or control devices with the same environmental rating as the enclosure, in compliance with the installation instructions of the device.

CATALOG NO. C-SD30248/SPL

UL LISTED

INDUSTRIAL CONTROL PANEL ENCLOSURE
ISSUE NO. A-1178

Enclosure Type 4, 12

24225001 Rev. JJ 00273

CONCEPT
FOR USE WITH INDUSTRIAL CONTROL EQUIPMENT ONLY
C.S.P. ENCLOSURE TYPE 4, 12

WORLD ENERGY SERIES

3 PHASE INDUCTION MOTOR

MODEL NO. B2002VGG3U3		FR 1/2 444TS	
TYPE	TIKK	SERVICE FACTOR	1.15
FORM	VCK1	MAX.AMB.	40 °C
VOLTS	230 / 460	TIME RATING	CONT.
H _z	60	CODE F	BRG. L.I.S. 631303
POLES	2	RPM	3540
NO. D.S.	631303	SERIAL NO.	90001031
AMP.	470 / 235	USABLE ON 208V NETWORKS AT 525 AMP.	
USABLE ON 575V NETWORKS AS 155 HP AT 525 AMP.			
ALTERNATE CONNECTIONS IN CONDUIT BOX			
P.S. WEA CORPORATION			
MADE IN U.S.A.		MADE IN U.S.A.	

