

Recold Fluid Cooler/Evaporative Condenser- 320 Ton

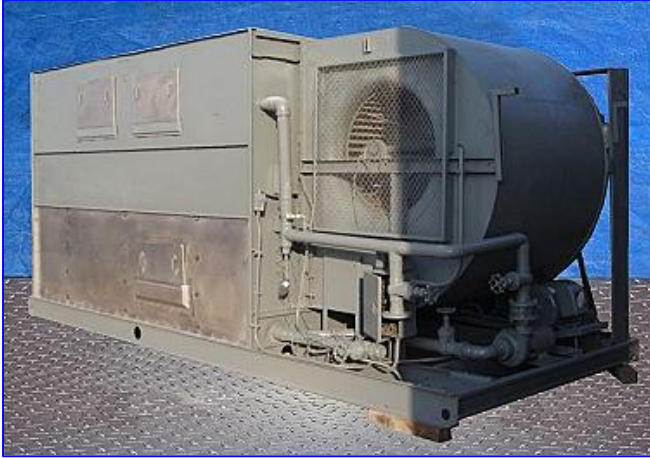
Mfg: Recold

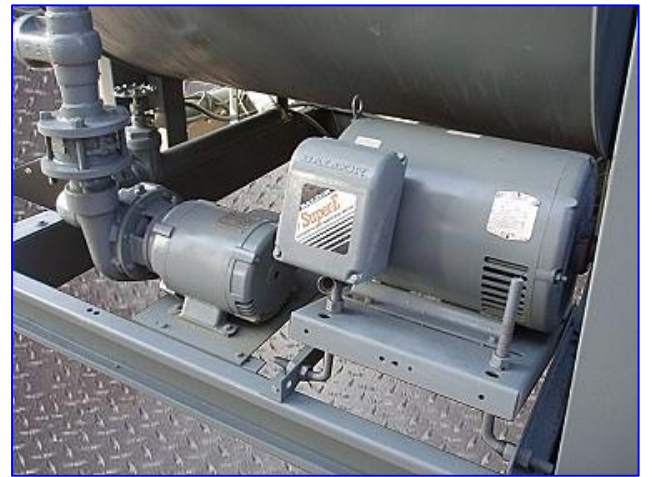
Model: JC 320

Stock No. ME0305.

Serial No. 89338

Recold Fluid Cooler/Evaporative Condenser- 320 Ton. Model JC 320. S/N 89338. Refrigerant charge: 455 lbs (R-22). Capacity per tube circuit: 33495 Btuh. Total unit capacity: 4,689,300 Btuh. Sump capacity: 454 gal. Air volume: 5000 cfm. Coil face: 85.5 sq. ft. Number of tube circuits: 140. Spray water: 325 gpm. Operating weight: 11900 lbs. Fan 30 hp. The Model JC Evaporative Condenser is a ruggedly built unit constructed to provide many years of durable, dependable service with minimal maintenance requirements. (7) 23 in. L x 17 in. W access doors. Inlets: (4) 3 in. dia. port, Outlets: (4) 3 in. dia. port. Top is galvanized. Coil is copper and has been capped. Dimensions: 217 in. L x 93-1/2 in. W x 98 in. H.









The Recold JC series is a forced draft, centrifugal fan, counterflow Evaporative Condenser. The unit is of low profile design with a single fan mounted on the end of the unit for convenient access by service personnel. The unit ships completely factory assembled with optional accessories factory installed unless specified otherwise.

Fan Motors

Fan motors furnished as standard equipment are open drip-proof type suitable for outdoor service. Motors have a 1.15 service factor and are mounted on a heavy duty adjustable base located for easy access.

Fan Guard Screens

All moving parts are protected with OSHA approved galvanized steel screens. Each guard is easily removed for access to the fan.



Fan Section



The centrifugal fan is forward curved, statically and dynamically balanced and constructed of galvanized steel. The fan housing has curved inlet rings for efficient air entry and discharge into the pan. Fans are mounted on a solid steel shaft coated to resist corrosion. Heavy duty, pillow block type, self-aligning ball bearings are located at each end of the fan shaft.

No intermediate bearings are required

Extended lube lines are supplied as standard equipment to allow servicing bearings without removal of fan guard screens.

Drift Eliminators

Eliminators are constructed of PVC assemblies in removable, easy to handle sections. Each section has a three break design allowing three changes in air flow and measure approximately 5 inches in depth. The use of durable PVC eliminates the corrosion problems associated with galvanized eliminators .

Water Circulation Pump

Water circulation pump is a close coupled, bronze fitted centrifugal type with mechanical seal. Each pump is factory mounted and piped. Standard motor is open drip-proof suitable for outdoor service.

Water Make-Up

Water make-up is provided by a solid brass float valve with arm and float ball installed in an external float box. This allows easy observation of the water operating level and maintenance of the valve with unit in operation.



Heat Exchange Coil

Coil tube bundle is constructed of 5/8 in. O.D. copper tubing with stainless steel tube sheets and copper headers. The copper construction offers a noncorrosive coil for extended service life.

Access Doors

Large rectangular access doors are strategically located to provide access to both upper water distribution system and lower pan basin. The patented doors provide a complete air and water tight seal without the use of gaskets or fasteners.