

Moyno (Robbins & Myers) Progressive Cavity Pump

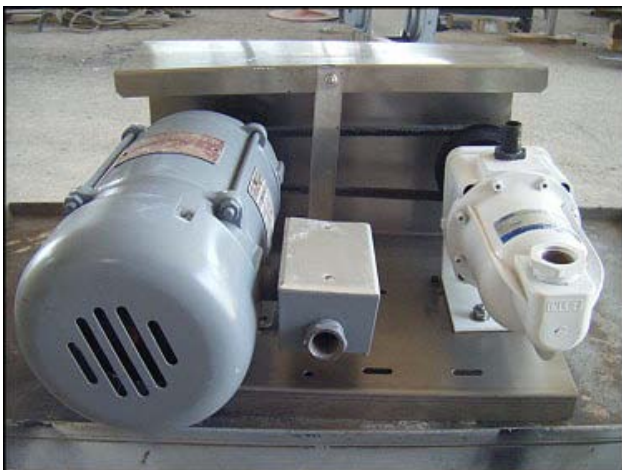
Mfg: Moyno (Robbins & Myers)

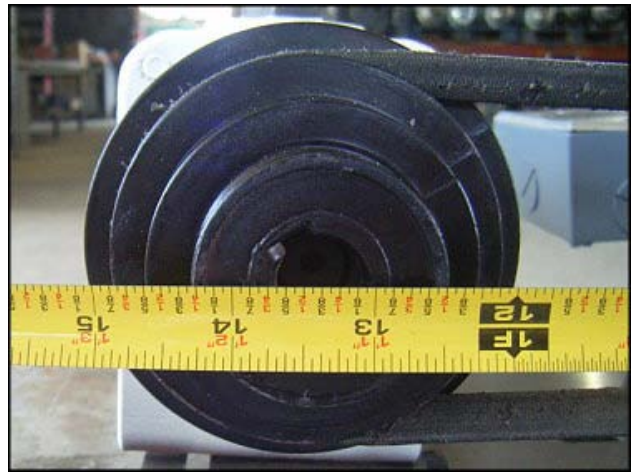
Model: 34408

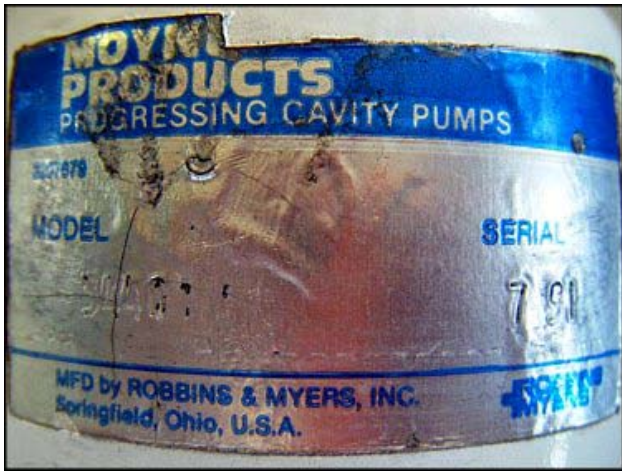
Stock No: NOIP9005

Serial No: 791

Moyno (Robbins & Myers) Progressive Cavity Pump. Model: 34408. S/N: 791. Howell Electric Motor: $\frac{3}{4}$ Hp, 1725 rpm, 115/230 volts, 10.0/5.0 amps, 60 Hz, 1 phase. (1) 1 in. FNPT. Overall dimensions: 1 ft. 5 in. L. x 1 ft. 5 in. W. x 10 in. H.







LELAND OHIO

H.P.	PH.	DUTY	FRAME
3/4	1	CONT.	E56
HZ.	R.P.M.	VOLTS	AMPS, S.F.
60	1725	115/230	10.0 1.0
			5.0

CODE L NEMA B 40 D21J-15212

HOWELL ELECTRIC MOTORS