

DATE _____
 CUSTOMER _____

 USER _____

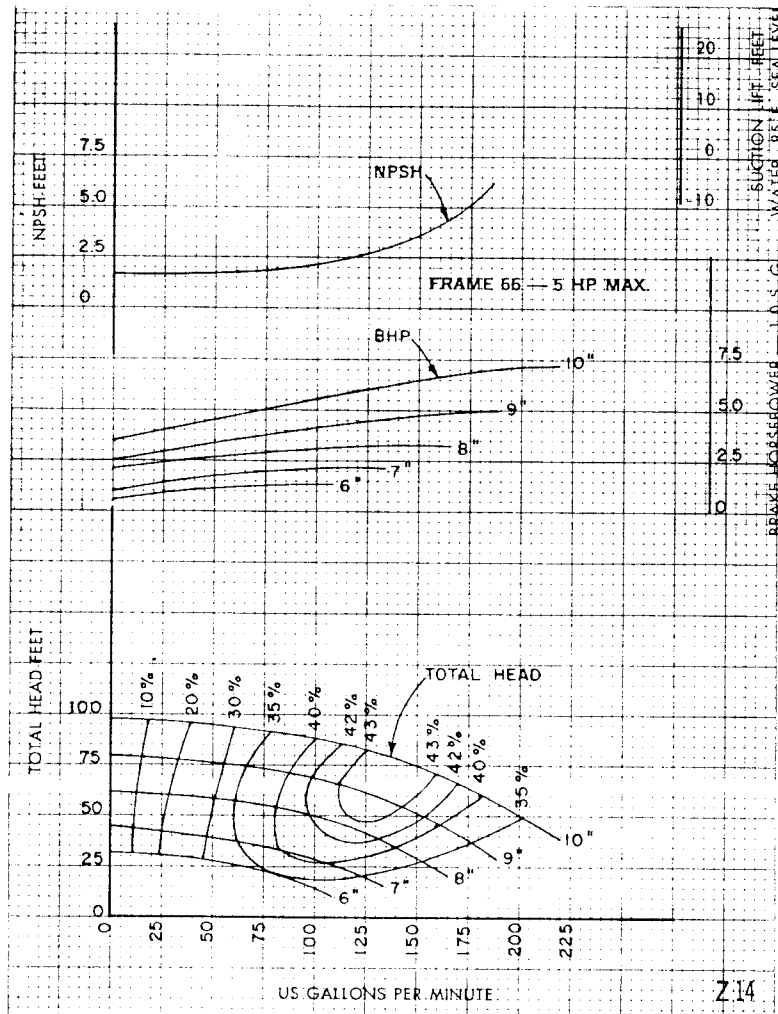
 ENGINEER _____

 BRANCH NO. _____
 CUSTOMER NO. _____
 BUFFALO NO. _____
 ITEM NO. _____

 SERVICE _____

 LIQUID _____

 SPECIFIC GRAVITY _____
 VISCOSITY _____
 TEMPERATURE _____



TYPE H66-2013
 SIZE 3 x 1 1/2 x 1 3/4
 CLASS HCR
 FRAME 66
 IMPELLER
 TYPE ENCLOSED
 DWG. 14756-8
 PATT. PC6635
 C. O. 14
 E. AREA 7.07
 VANES 5
 SOLIDS -

1750 RPM

66
2013



PUMP DIVISION
 BUFFALO
 FORGE
 COMPANY
 BUFFALO, N. Y.

Page B1-15
 Date 7-19-82
 Supersedes
 P7-15 of 6-23-80

4-5/8-11 UNC TAPS
ON 2 3/4 B.C.

1 1/4-11 1/2 NPT
PIPE TAP CONDUIT CONN.

CAUTION: BOLTS FOR PIPING MUST ENTER FROM THE SIDE OPPOSITE THE PUMP. WHERE THRU BOLT HOLES ARE FURNISHED THERE IS ONLY ENOUGH SPACE FOR NUTS BETWEEN THE BACK OF THE FLANGE AND CASING BODY.

CERTIFIED CORRECT WHEN SIGNED

NO.

REV

CUSTOMER ORDER _____

CD15305-1

SHOP ORDER _____

BRANCH OFFICE ORDER _____

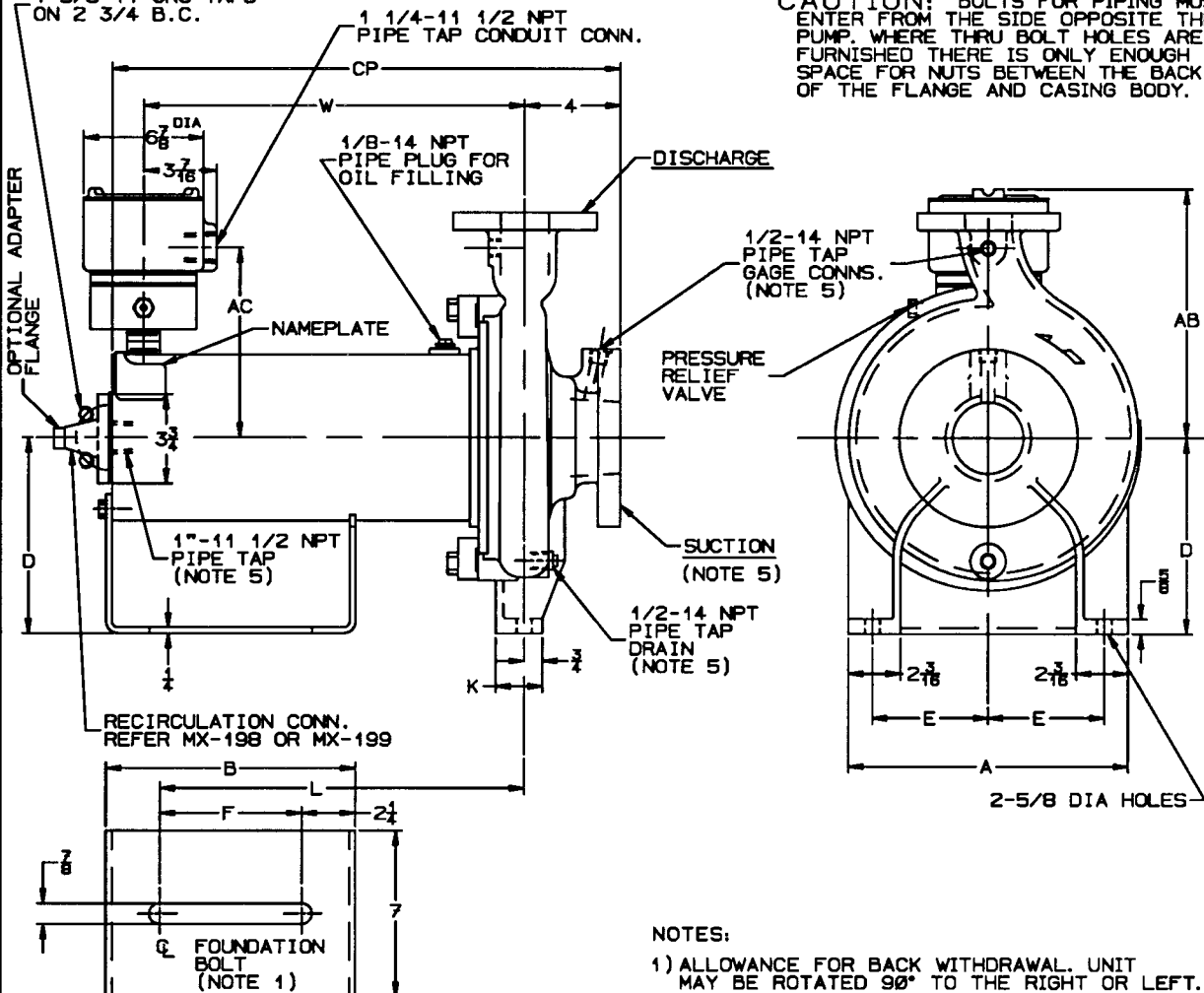
DATE _____ SIGNED _____

CUSTOMER _____

ULTIMATE USER _____

SIZE	CLASS	FTD.	G.P.M.	TH.	IMP.DIA.	TEMP.	SP.GR.
	HCRII						
ROTATION	NPSHr	NPSHa	LIQUID PUMPED				
C.W.							
MOTOR MFR.	FRAME	HP.	R.P.M.	CURRENT PH/HZ/VOLTS		ENCL.	
PEERLESS-WINSMITH						OIL FILLED STATOR T&C	

REMARKS :



NOTES:

- 1) ALLOWANCE FOR BACK WITHDRAWAL. UNIT MAY BE ROTATED 90° TO THE RIGHT OR LEFT.
- 2) DIMENSIONS ARE IN INCHES
- 3) FLANGE BOLTS STRADDLE ϕ
- 4) SUCTION FLANGES ARE TAPPED ON ϕ 58, 509, 609, 2013, 3013, 4013, & 8013 SIZE PUMPS
- 5) UNITS SHIPPED WITH REMOVABLE METAL PLUGS

PUMP DATA

PUMP SIZE	SUCT X DISCH	A	D	E	K	X
058	2 X 1	11 3/4	8 1/4	4 7/8	1 15/16	8 1/2
509	3 X 1 1/2	11 3/4	8 1/4	4 7/8	1 15/16	8 1/2
609	3 X 2	11 3/4	8 1/4	4 7/8	1 15/16	9 1/2
709	4 X 3	11 3/4	8 1/4	4 7/8	1 15/16	11
2013	3 X 1 1/2	11 3/4	10	4 7/8	2 1/16	10 1/2
3013	3 X 2	11 3/4	10	4 7/8	2 1/16	11 1/2
4013	4 X 3	11 3/4	10	4 7/8	2 1/16	12 1/2
8013	6 X	4	10	6	2 1/16	13 1/2

FLANGE DATA

SIZE	O.D.	TKNS	NO.HOLES (NOTE 4&5)	FLG. B.C.
1	4 7/8	1 1/8	4 - 3/4	3 1/2
2	6 1/2	7/8	8-3/4 DR. 8-5/8-11UNC	5
3	8 1/4	1 1/8	8-7/8 DR. 8-3/4-10UNC	6 5/8
4	10	1 1/4	8-7/8 DR. 8-3/4-10UNC	7 7/8
6	12 1/2	1 7/8	12-3/4-10UNC	10 5/8

MOTOR DATA

FRAME	B	F	L	W	CP	AB	AC
P66M	10 1/2	6	12 7/16	13 1/8	19 1/2	10 7/8	B
P66V	13	8	14 15/16	15 13/16	21 1/2	10 7/8	B
P66ZF	16	8	15 15/16	19 1/8	25 1/2	10 7/8	B
P215Z1	14 1/2	22 7/16	22 1/8	28 1/2	11 13/16	8 15/16	

HCR CAN-O-MATIC II
HIGH PRESSURE
OUTLINE ELEVATION

THIS DRAWING IS THE PROPERTY OF BUFFALO PUMPS INC. IT IS FOR THE EXCLUSIVE USE OF THE CUSTOMER AND MUST BE RETURNED TO BUFFALO PUMPS INC. WITHIN 30 DAYS OF THE DATE OF DELIVERY OF THE EQUIPMENT. ANY REPRODUCTION OR USE OF THIS DRAWING WITHOUT THE WRITTEN PERMISSION OF BUFFALO PUMPS INC. IS PROHIBITED AND WILL BE CONSIDERED A VIOLATION OF OUR PATENT RIGHTS AND WILL VOID OUR EQUIPMENT WARRANTY.

BUFFALO PUMPS INC.
AN AMPCO-PITTSBURGH COMPANY
N. TONAWANDA, N.Y., USA