

**2007 Vilter VSG-1801 Package Less Compressor - 450 HP**

**Mfg: Vilter**

**Model: VSG1801**

**Stock No: NTSD01B**

**Serial No: 4052**

\*Note: the compressor was removed from this package and sold bare. We are offering the remaining items: oil separator vessel, 450 HP 4160V motor, control panel, oil filters, etc.

2007 Vilter VSG Single Screw Compressor Package with 450 HP drive motor and Allen-Bradley programmable controller.

Details of removed compressor (not included): Model: VSG1801. Sales Order: SO57571-363, Serial Number: 4052, Test Pressure: 600 PSIG, Rated Discharge Pressure: 400 PSIG, MAWP: 450 PSIG, Date: 11-30-07, Compressor Unit Model VSG1801VVRGHNECST.

This compressor package was installed, but never was used in service. Motor leads were pulled from the junction boxes, but never were terminated at the starter. We purchased the units February 2013 and have them at our indoor warehouse in Texas. According to Vilter, common applications for the Vilter VSG is gas liquification, vapor recovery, flare gas recover, coal bed methane recovery, field and fuel gas boosting, wellhead recovery, enhanced oil recovery, landfill gas recovery, LNG boil off, gas gathering, bio-gas, digester, carbon dioxide CO2, nitrogen, hydrogen, and other refrigerants. Package features Vilter control panel with Allen-Bradley Panelview Plus 1000, 600 PSIG Oil Separator, Chil-Con, and Insultec components. Reliance Electric Liberator Motor: 450 HP, 3576 RPM, 4160V, 55.9 Amps, 3-phase, 19A G5010S Frame, Code G, 1.15 S.F., CONT Duty, TEFC Enclosure, weight: 4,300 lbs. Overall Dimensions (with suction strainer removed): 14 ft. 4 in. L x 6 ft. 6 in. W x 8 ft. 4 in. H. (ACN1550)

Not included: Vilter Single Screw Compressor Unit, Sales Order: SO57571-363, Serial Number: 4052, Test Pressure: 600 PSIG, Rated Discharge Pressure: 400 PSIG, MAWP: 450 PSIG, Model: VSG1801, Date: 11-30-07, Compressor Unit Model VSG1801VVRGHNECST.

Vilter Control Panel: SO: 57276, Drawing: 525 0044, 120V, 1-phase. Allen-Bradley Panelview Plus 1000: Cat: 2711P-T10C4D1, Ser A, Made in USA. Panelview Plus Logic Module: Cat 2711P-RP1, Ser F, 24 VDC. Panelview Plus 1000 Color Touch Display Module: Cat 2711P-RDT10C, Ser B. UL Listed Enclosed Industrial Control Panel No. BL-558787.

Reliance Electric Liberator Motor: 450 HP, 3576 RPM, 4160V, 55.9 Amps, 3-phase, 19A G5010S Frame, Code G, 1.15 S.F., CONT Duty, TEFC Enclosure, weight: 4,300 lbs.

Certified Vessel: National Board No: 47528, Certified by Vilter, A34928A, MAWP: 600 PSIG at 400F, MAWP: 600 PSIG at -20 MDMT-F, MDMT: AMB-F at 0 PSI A, Serial No.: W027416-2, Year Built: 2007.

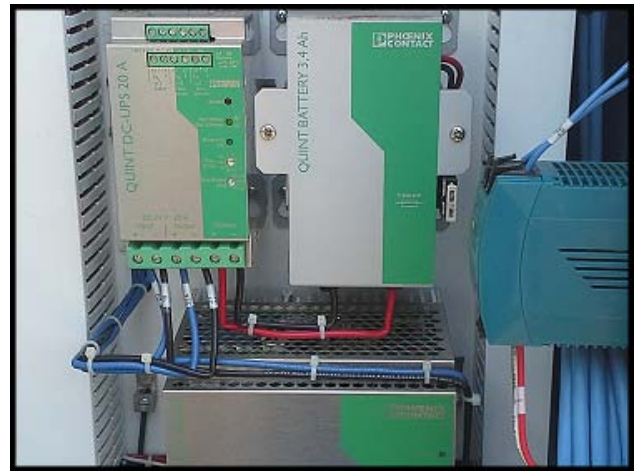
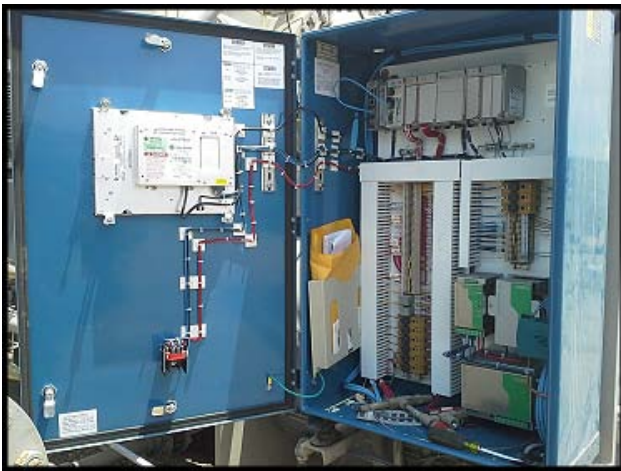
Certified Vessel: National Board No: 47530, Certified by Vilter, A34928A, MAWP: 600 PSIG at 400F, MAWP: 600 PSIG at -20 MDMT-F, MDMT: AMB-F at 0 PSI A, Serial No.: W027416-4, Year Built: 2007.

Certified Vessel: National Board No: 20825, Certified by Chil-Con, Shell MAWP: 400 PSIG at 300F, Shell MDMT: -20F at 400 PSI, Tube MAWP: 150 PSI at 300F, Tube MDMT: -20F at 150 PSI, CRN: -----, Serial: C270424B-1, Date: 2007, Tag: 9997NV, Model: LXX-10144-210.

Insultech Thermal Blanket Insulation: Vilter-VSS-350 36 in. Dia. Oil Sep PC#5.









**VILTER**<sup>®</sup>  
Since 1867  
VILTER MFG. CORP.  
CUDAHY, WISCONSIN

**SINGLE SCREW  
COMPRESSOR  
UNIT**

ORDER NO. 8057571 363 DATE 11-30-07

COMPRESSOR UNIT MODEL NO.  
VSG180IVRCHNECST

**VILTER**<sup>®</sup>  
Since 1867  
VILTER MFG. LLC.  
CUDAHY, WISCONSIN  
(414) 744-0111

**SINGLE  
SCREW GAS  
COMPRESSOR**

SERIAL NO. 4052 COMPRESSOR MODEL NO. VSG1801

ORDER NO. 8057571 MAX. RPM 3500 M.A.W.P. (PSIG) 450

TEST PRESSURE (PSIG) 600 RATED DISCHARGE PRESSURE (PSIG) 450

CE

NATIONAL BOARD NO.  
NB 17530

CERTIFIED BY  
**VILTER**<sup>™</sup>  
Since 1867  
VILTER MFG. CORP.  
CUDAHY, WISCONSIN  
(414) 744-0111

431029A

MAWP 600 PSIG AT 400 °F

MAWP 600 PSIG AT 30 °F MDMT °F

MDMT AMB °F AT 0 PSI Δ

SERIAL NO. 027415-4 YEAR BUILT 2007

NATIONAL BOARD NO.  
NB 17529

CERTIFIED BY  
**VILTER**<sup>™</sup>  
Since 1867  
VILTER MFG. CORP.  
CUDAHY, WISCONSIN  
(414) 744-0111

431029A

MAWP 600 PSIG AT 400 °F

MAWP 600 PSIG AT 20 °F MDMT °F

MDMT AMB °F AT 0 PSI Δ

SERIAL NO. 027415-2 YEAR BUILT 2007

Certified by:

**M & M**

Refrigeration, Inc.  
Federalsburg, MD 410-754-8005

MAWP 550FV psig at 450 °F

MDMT -20 °F at 550FV psig

Mfr's. Ser. No. 07A188

C.R.N.

Year Built 2007

**ELECTRIC**

FRAME	ENERGY EFFICIENT	IDENTIFICATION NO.	
HP <u>450</u>	TYPE <u>P</u>	<u>CCVRQ745c440002A3</u>	
VOLTS <u>4160</u>	DESIGN	PHASE <u>3</u>	
AMPS <u>55.9</u>	DUTY CONT	HZ <u>60</u>	
AMB <u>40</u> °C	S.F. <u>115</u>	INS. CLASS <u>F</u>	
<u>80</u> °C RISE BY	CODE <u>3</u>	ENCL <u>TEFO</u>	
DRIVE END BEARING <u>65B003J40X</u>	450 HP 55.9 AMPS		
OPP. DRIVE END BEARING <u>65B003J40X</u>			
115C R/RES = 5181F.63.9A			
M.T.R. WEIGHT = 40.4C 2F5			
RELIANCE ELECTRIC COMPANY/GREENVILLE, SC 29615			

**CHIL-CON**  
CHIL-CON PRODUCTS

CERTIFIED BY: HENRY TECHNOLOGIES LIMITED, BRANTFORD, ONT

SHELL SIDE TUBE SIDE

MAWP 400 psi at 200 °F MAWP AW psi

MP AW psi at AW °F MAEWP AW psi

MT -20 °F at 450 psi MDMT -20 °F

SERIAL 0270424B-1 CRN

DATE 2007 TAG 190711

MODEL 1XX-10124-210

**INSULTECH**  
Thermal Blanket Insulation

Shannon Enterprises of W.N.Y., Inc.  
75 Main Street, N. Tonawanda, NY 14120  
Phone: 716-693-7954 Fax: 716-693-1647

VILTER-VSS-350  
36" DIA. OIL SEP PCAS



**Allen-Bradley**  
**PANELVIEW PLUS 1000**  
**COLOR TOUCH DISPLAY MODULE**

CAT: 2711P-RDT10C B  
SER: [REDACTED]

CE 25 N223  
UL LISTED A198  
IND. CONT. EQ.  
FOR HAZ. LOC.

DISPOSAL: THE BACKLIGHT TUBES IN THIS PRODUCT CONTAIN MERCURY. PLEASE DISPOSE OF PROPERLY.

CLASS I DIV 2, GROUPS A, B, C, D, T4  
CLASS II, DIV 2, GROUPS F, G, CLASS II, T4  
CLASS I, ZONE 2 GROUP IC T4  
AEX IC T4  
FOR USE ON A FLAT SURFACE OF A TYPE 12.13, 4X (INDOOR USE ONLY) IP65 OR IP54 ENCLOSURE

FACU MADE IN U.S.A. 生产日期 200719829

WIN (21)AW0EG780

**Allen-Bradley**  
**PANELVIEW PLUS 1000**  
**ASSEMBLED TERMINAL**

CAT: 2711P-T10C4D1 A  
SER: [REDACTED]

CE 25 N223  
UL LISTED A198  
IND. CONT. EQ.  
FOR HAZ. LOC.

**DANGER**

EXPLOSION HAZARD - WHEN THIS MODULE IS RATED FOR HAZARDOUS LOCATIONS, DO NOT INSTALL OR REMOVE MEMORY CARDS, CONNECT OR DISCONNECT EQUIPMENT UNLESS POWER HAS BEEN SWITCHED OFF OR THE AREA IS KNOWN TO BE NON-HAZARDOUS. SERIES C OR LATER LOGIC MODULE USB PORT PROVIDES NONHazardous FIELD CIRCUITS WHEN CONNECTED PER CONTROL DRAWING.

RISQUE D'EXPLOSION - LORSQUE CE MODULE EST CERTIFIÉ POUR UNE UTILISATION EN ENVIRONNEMENTS DANGEREUX, COUPER LE COURANT OU S'ASSURER QUE L'EMPLACEMENT EST DESIGNED NON DANGEREUX AVANT D'INSERER OU DE CONNECTER OU DECONNECTER L'EQUIPEMENT.

CLASS I DIV 2 GROUPS A, B, C, D  
CLASS II DIV 2 GROUPS F, G, CLASS II  
TEMPERATURE T4  
CLASS I, ZONE 2 GROUP IC T4  
AEX IC T4

REFER TO TERMINAL OR DISPLAY MODULE INSTALLATION MANUAL FOR ENCLOSURE TYPE RATING

BY 6113-2 EQUIPMENT CLASS I FOR USE WITH A CLASS 388VL SOURCE OR 2711P SOURCE

24 VDC 70 W

FACU MADE IN U.S.A. 生产日期 20070833

WIN (21)AW0EG780

**CONTROL PANEL CHECKOUT**  
**SALES ORDER #:** 57276  
**PANEL DRAWING #:** 525-0044  
**WIRING DRAWING #:** 525-0044  
**WIRED BY:** RAC  
**CHECKED BY:** RE **DATE:** 10-1-07  
**RELEASED BY:** JWG **DATE:** 10-8-07