

## Trane Air Cooled Glycol Packaged Chiller- 30 Ton

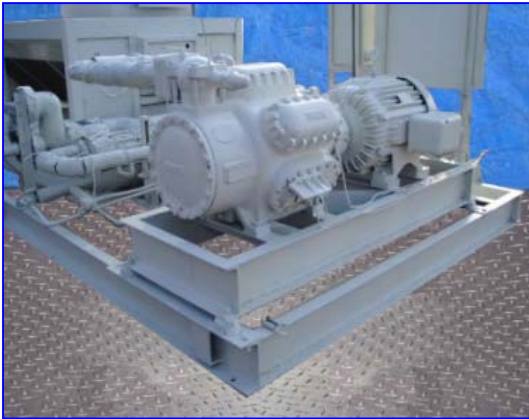
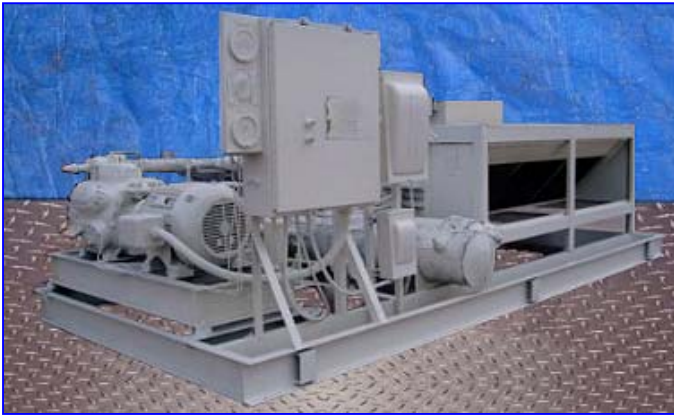
Mfg: Trane

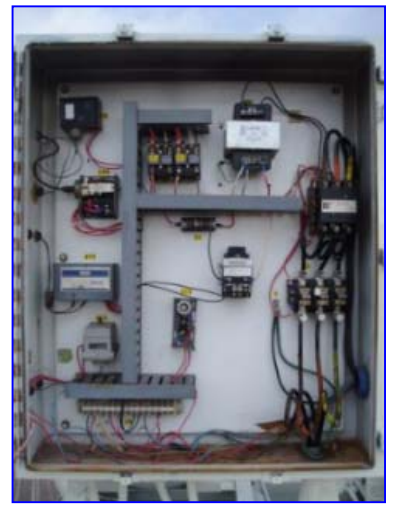
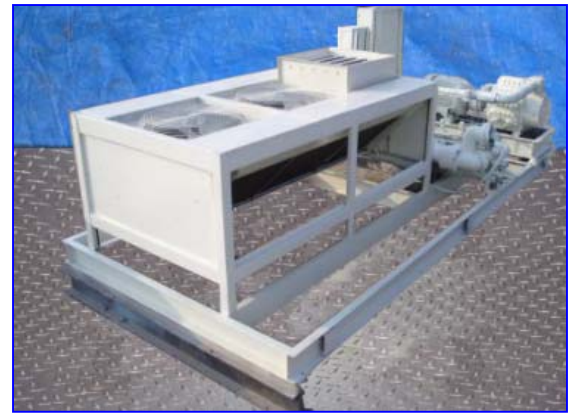
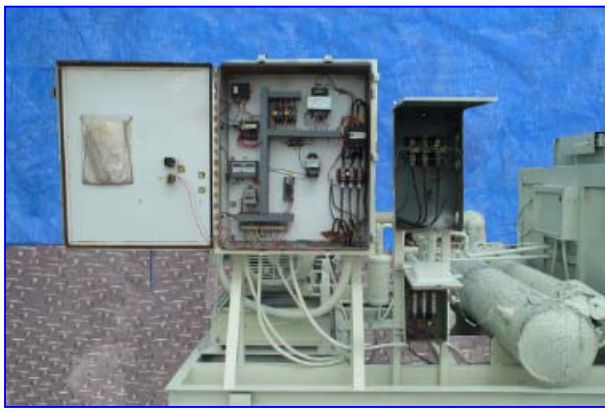
Model:

Stock No. OI117.

Serial No.L78F12355

Trane Air Cooled Glycol Packaged Chiller- 30 Ton. S/N L78F12355. Compressor motor: 68.3 FLA, 60 LRA, 60 Hz, 3 phase, 460 V, utilization volt range: 414-506, nominal system voltages: 440-460-480, test pressure: 450 psi (high side), 300 psi (low side), factory charged: R-22 (circuit 1: 40 lbs.). (3) condenser fan motors: 1 hp, FLA: 1.82 (each), 60 Hz, 3 phase. Heater circuit: 115 V, 420 watts. Overall dimensions: 200 in. L x 96 in. W x 70 in. H.





QTY PH HZ FLA EA LRA EA		MODEL NO	PROCESS CHILLER	
		SERIAL NO	L78F12355	
		TYPE NO	OPEN-AIR COOLED	
RATED VOLTAGE		UTILIZATION	#14-506	
NOMINAL SYS VOLTAGES		440-460-480		
EVP 1		ODS 1	PFL 1	#130-1
EVP 2		ODS 2	PFL 2	
FACTORY CHARGED		R	ICKT 11	ICKT 21
TEST PRESSURE		HIGH	LOW	
<b>TRANE</b>				
THE TRANE COMPANY LA CROSSE, WISCONSIN				
MADE IN U.S.A.				



