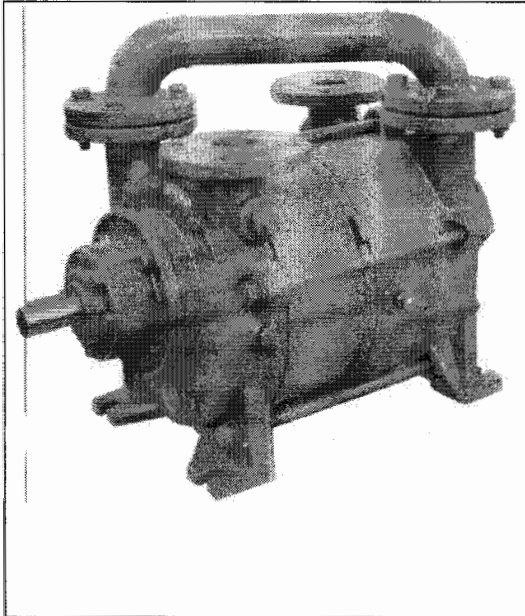


TRHB 50

Two Stage High Vacuum Pump

PERFORMANCE DATA : From 25 Torr	CAPACITY: 125 – 320 cfm
FEATURES : Two-stage rotating pump with externally located bearings grease lubricated.	
SHAFT SEALING : Mechanical seal - Double mechanical seal – Packing seal.	
OPTIONS : Bareshaft pump - Coupled to electric motor on baseplate – Monoblock with electric motor	



TECHNICAL DATA							
PUMP TYPE		TRHB 50-280		TRHB 50-340		TRHB 50-420	
		Speed	RPM	1450	1750	1450	1750
Motor - installed power	HP	15	15	15	20	20	25
Average service liquid flow	GPM	8	8	10	10	13	13
Noise level at 60 Torr	dB(A)	70	73	70	73	71	74
Minimum suction pressure	Torr	25	25	25	25	25	25

Pumps are provided with threaded connections for service liquid, pump draining, grease, anticavitation valve and companion valve. Pumps are also provided, by request, with auxiliary threaded connections, flanged air-liquid separator tank, non return valve, ejector, vacuum relief valve, flow valve to control the flow of the liquid supply, vacuum gauges, pressure gauges and compound gauges. We can also provide information on our water sealed and oil sealed systems. For more detailed information please contact our Sales Office.

Standard Materials of Construction					
Part No.	Description	GH	F	RA	A3
106	Suction casing	Cast Iron			
107	Discharge casing				
137	Port plate				
110	Impeller housing				
210	Shaft	Stainless Steel AISI 420		Stainless Steel AISI 316	
147	Manifold	Steel			
357	Bearing housing mech. seal	Cast Iron			
230	Impeller	Bronze	Ductile Iron	Stainless Steel AISI 316	

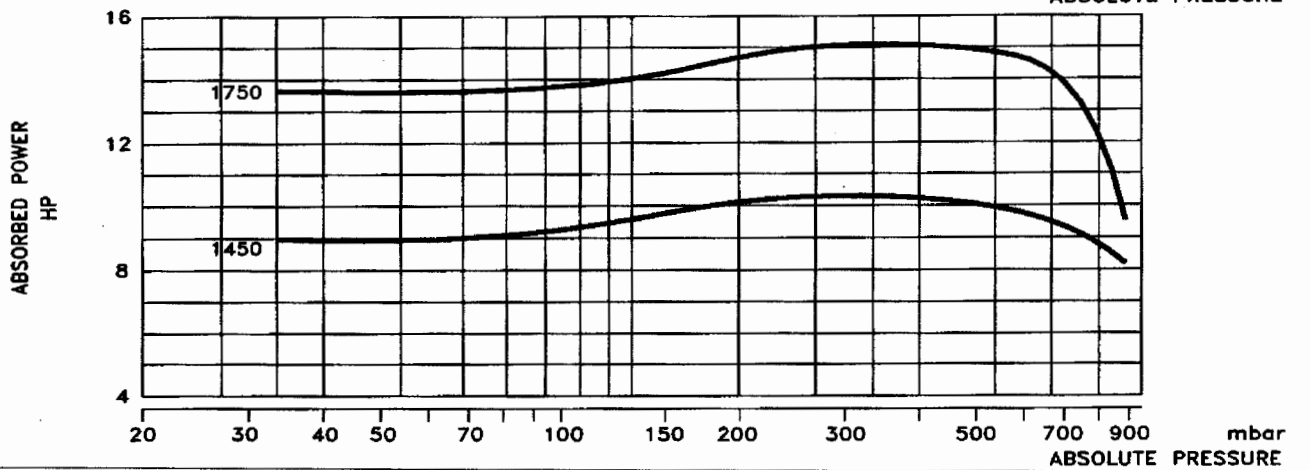
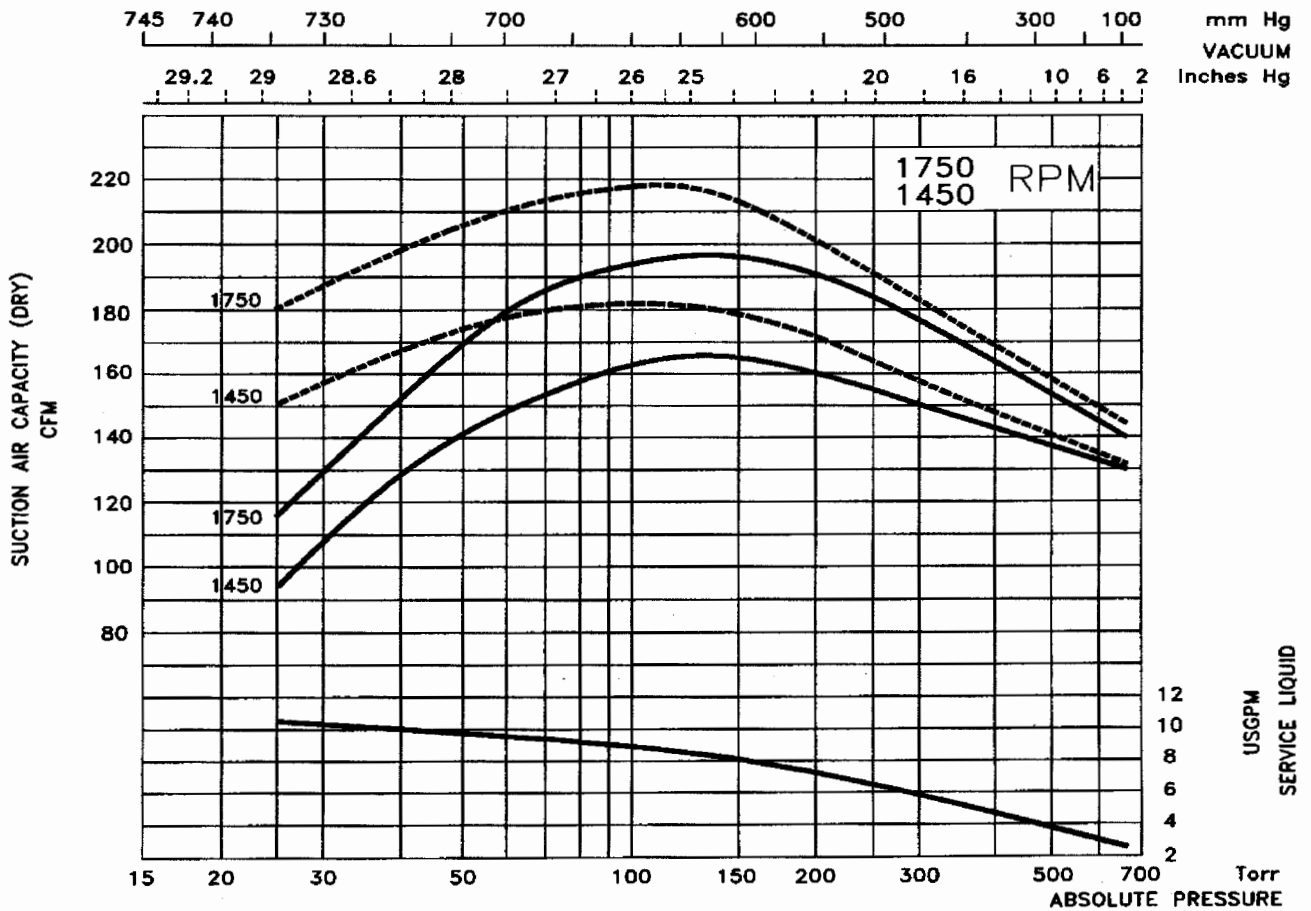
Special Materials Available Upon Request
 Indicative table: for further information please consult our Sales Office

DATA BASED ON :
 DRY AIR AT 68 °F - 20 °C
 SATURATED AIR AT 68 °F - 20 °C
 SERVICE LIQUID WATER
 SERVICE LIQUID TEMPERATURE 59 °F - 15 °C
 DISCHARGE PRESSURE 1013 mbar

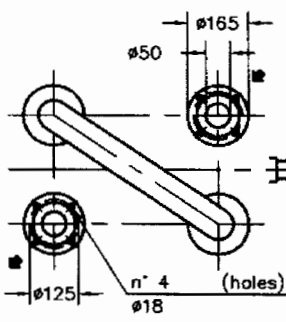
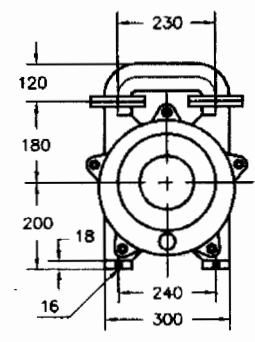
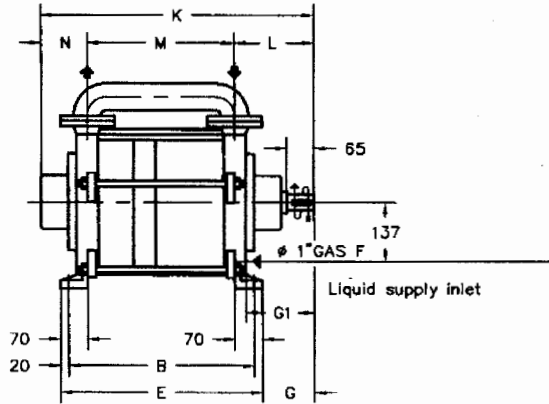
S.S. PUMPS
 CAPACITY : -10%

PERFORMANCE DATA
 LIQUID RING VACUUM PUMP
 PUMP MODEL
TRHB 50-280

Tol.: 10%



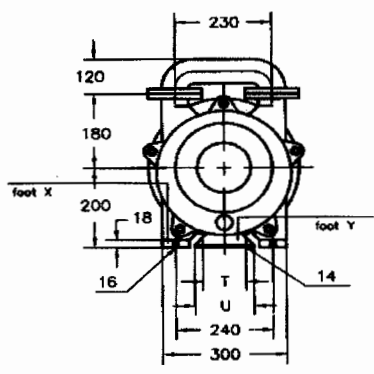
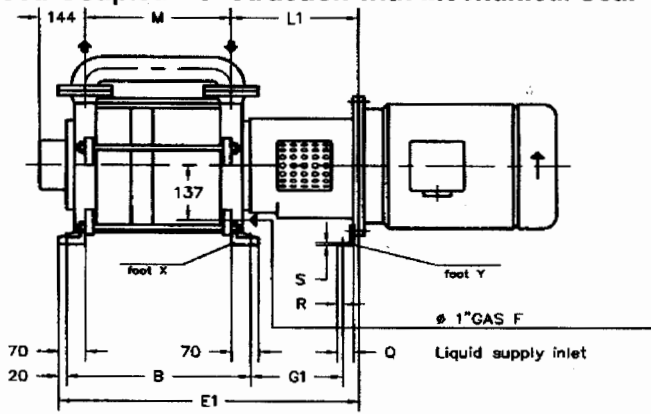
Bareshaft Construction with Mechanical Seal



Pump Type	B	E	M	G	G1	K	L	N	Weight lbs.
TRHB 50-280/C	419	459	319	146	185	679	216	144	286
TRHB 50-340/C	479	519	379			739			308
TRHB 50-420/C	519	559	419			779			319

Note: mm
 Dimensions in mm. ----- =inches
 25.4

Closed-Coupled Construction with Mechanical Seal



Pump Type	4 Poles Motor HP	Pump										Weight ¹ lbs.
		B	E1	G1	L1	M	Q	R	S	T	U	
TRHB 50-280/C	15	419	685	224	313	319	45	20	4	110	140	321
	15		730									352
TRHB 50-340/C	20	479	790	244	342	379	65	28	39	230	280	374
	25		830									381
TRHB 50-420/C	25	519	830			419						392

¹ Weight without motor
 Dimensions are for reference only. Please consult the factory for certified drawings.
 The weights refer to the GH construction

