

2002 Winsmith Agitator Drive

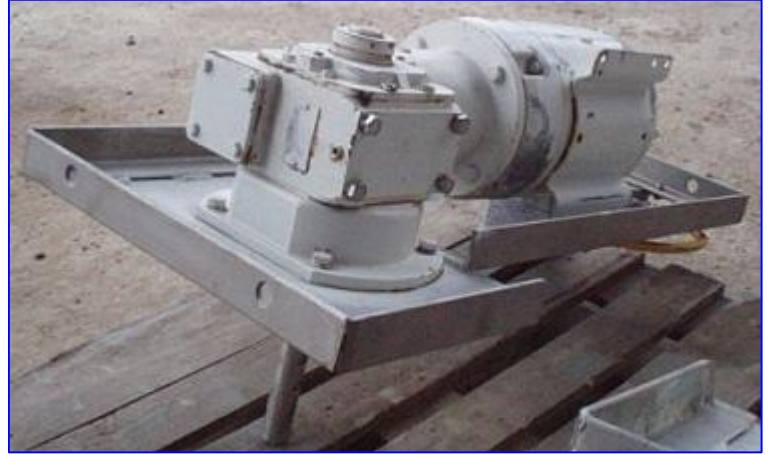
Mfg: Winsmith

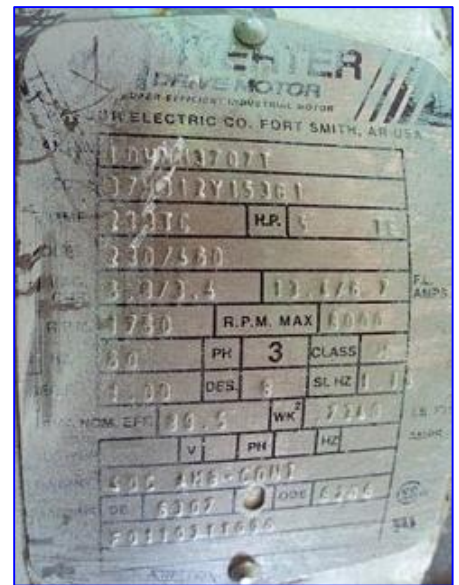
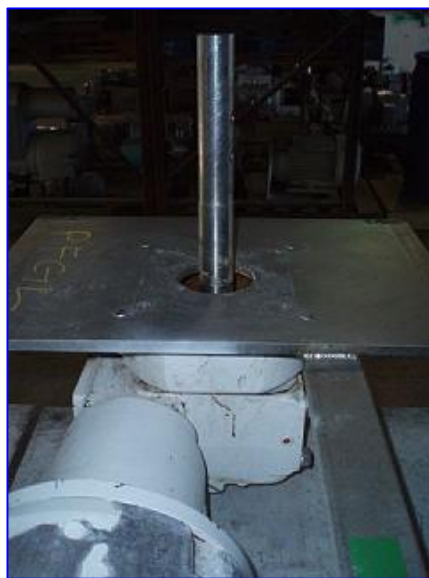
Model: 930CDSF

Stock No. PFGL173B.

Serial No. _____

2002 Winsmith Agitator Drive. Model: 930CDSF. P/N: 930CSFS099X0BT. Ratio: 7.5. Maximum input rpm: 1750. Output rpm: 234.6. Output torque: 11.48 in.-lbs. Shaft diameter: 1-1/4 in. Baldor Industrial Motor, 5 hp, 1760 rpm, 230/460 V, 6.8/3.4 amps, 60 Hz, 3 phase. Overall dimensions: 3 ft. 6 in. L x 1 ft. 8 in. W x 2 ft. H.





WHEEY
DRIVE MOTOR
 SUPER EFFICIENT INDUSTRIAL MOTOR
 WHEEY ELECTRIC CO. FORT SMITH, AR USA

TYPE	130TC	H.P.	5	TE
SIZE	230/360			
	3.8/3.4		13.1/6.7	FL AMP'S
RPM	1750	R.P.M. MAX	1800	
	30	PH	3	CLASS
	1.00	DES	6	SL. HZ
NOM. EFF.	86.5	WK	7240	LB. WT.
		V		HZ
400 AMP-CONT				
DE	6009	ODE	8240	
F011631160				

