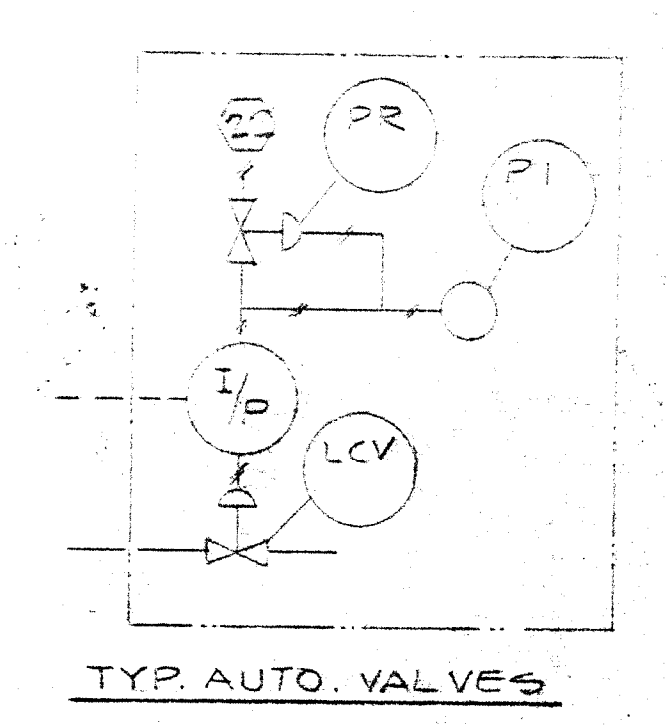


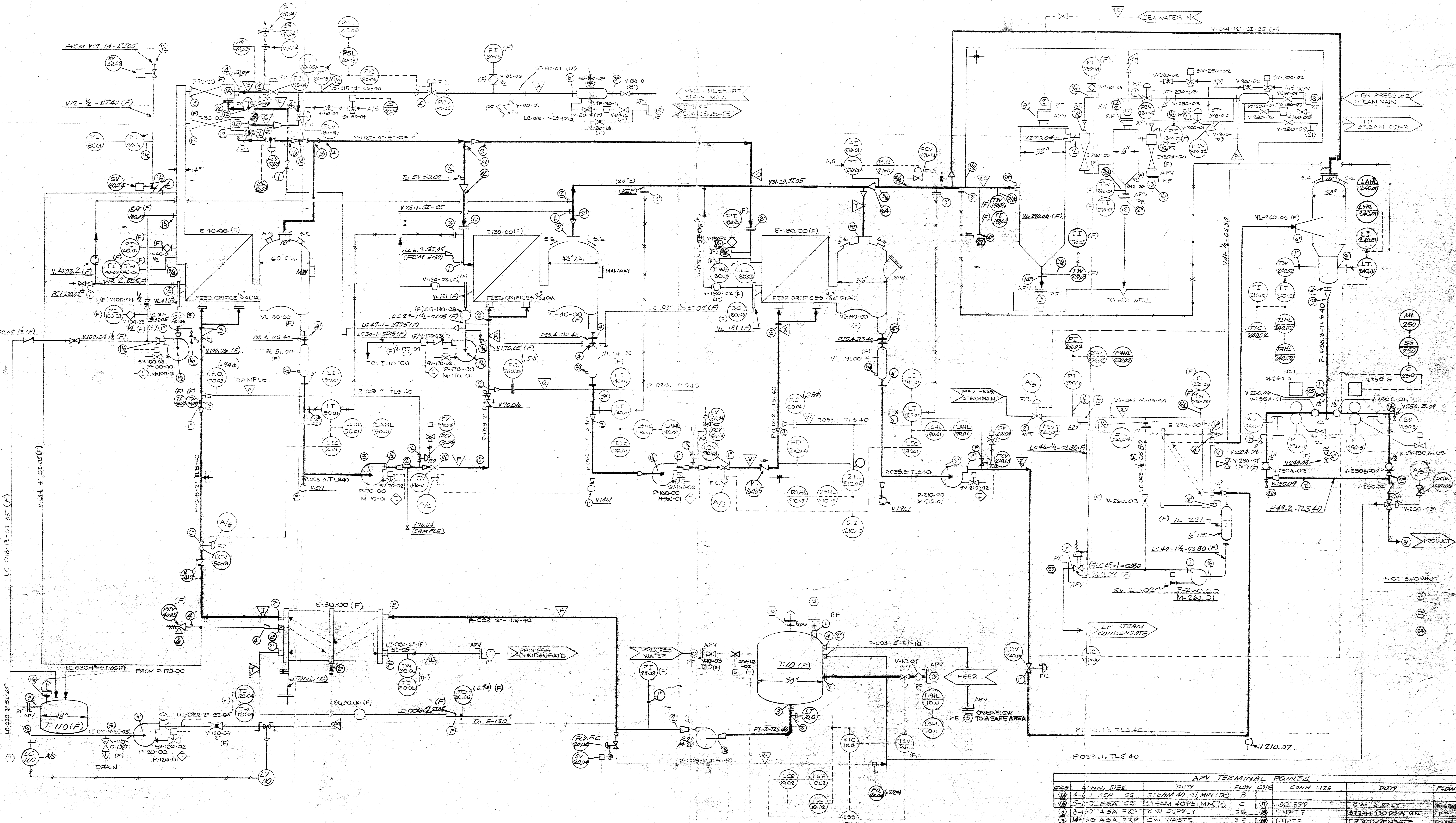
NO.	DATE	DESCRIPTION
1		
2		
3		
4		
5		
6		
7		
8		
9		
10		
11		
12		
13		
14		
15		
16		
17		
18		
19		
20		
21		
22		
23		
24		
25		
26		
27		
28		
29		
30		
31		
32		
33		
34		
35		
36		
37		
38		
39		
40		
41		
42		
43		
44		
45		
46		
47		
48		
49		
50		

THE PUMP/JUNCTION PIPE DEAN VALVES ARE TO BE INSTALLED IN THE PUMP/JUNCTION PIPE DEAN VALVE AS SHOWN IN THE P&ID. THE PUMP/JUNCTION PIPE DEAN VALVE IS TO BE INSTALLED IN THE PUMP/JUNCTION PIPE DEAN VALVE AS SHOWN IN THE P&ID. THE PUMP/JUNCTION PIPE DEAN VALVE IS TO BE INSTALLED IN THE PUMP/JUNCTION PIPE DEAN VALVE AS SHOWN IN THE P&ID.



PIPE MATERIAL SUPPLY TABLE

PIPE APV TAG NO. (3/11/02)	PIPE APV TAG NO. (3/11/02)	PIPE APV TAG NO. (3/11/02)	PIPE APV TAG NO. (3/11/02)	PIPE APV TAG NO. (3/11/02)	PIPE APV TAG NO. (3/11/02)
111	36.22				
112	36.24				
113	36.29				
114	36.29				
115	36.29				
116	36.29				
117	36.29				
118	36.29				
119	36.29				
120	36.29				
121	36.29				
122	36.29				
123	36.29				
124	36.29				
125	36.29				
126	36.29				
127	36.29				
128	36.29				
129	36.29				
130	36.29				
131	36.29				
132	36.29				
133	36.29				
134	36.29				
135	36.29				
136	36.29				
137	36.29				
138	36.29				
139	36.29				
140	36.29				
141	36.29				
142	36.29				
143	36.29				
144	36.29				
145	36.29				
146	36.29				
147	36.29				
148	36.29				
149	36.29				
150	36.29				



ITEM NO.	DESCRIPTION	MANUFACTURER	MODEL	SIZE	MATERIAL
P-20-00	FEED PUMP	APV PARAFLOW	MODEL: HXU6	1 1/2	STEEL
E-20-00	PREHEATER	APV PARAFLOW	MODEL: HXU6	1 1/2	STEEL
E-40-00	1ST EFFECT 24" DIA. CALANDRIA	APV PARAFLOW	MODEL: HXU6	24"	STEEL
VL-50-00	FIRST EFFECT SNAIL SHELL SEPARATOR	APV PARAFLOW	MODEL: HXU6	24"	STEEL
P-10-00	1ST EXTRACT/RIC PUMP	APV PARAFLOW	MODEL: HXU6	1 1/2	STEEL
E-30-00	FINISHER MANIFOLD	APV PARAFLOW	MODEL: HXU6	30"	STEEL
VL-60-00	FINISHER MANIFOLD SEPARATOR	APV PARAFLOW	MODEL: HXU6	30"	STEEL
P-10-00	CONDENSATE RECEIVER TANK	APV PARAFLOW	MODEL: HXU6	10"	STEEL
P-10-00	CONDENSATE MANIFOLD PUMP	APV PARAFLOW	MODEL: HXU6	1 1/2	STEEL
E-180-00	2ND EFFECT 36" DIA. CALANDRIA	APV PARAFLOW	MODEL: HXU6	36"	STEEL
VL-180-00	2ND EFFECT SNAIL SHELL SEPARATOR	APV PARAFLOW	MODEL: HXU6	36"	STEEL
P-10-00	2ND EXTRACT/RIC PUMP	APV PARAFLOW	MODEL: HXU6	1 1/2	STEEL
E-30-00	FINISHER MANIFOLD	APV PARAFLOW	MODEL: HXU6	30"	STEEL
VL-30-00	FINISHER MANIFOLD SEPARATOR	APV PARAFLOW	MODEL: HXU6	30"	STEEL
P-10-00	3RD EXTRACT/RIC PUMP	APV PARAFLOW	MODEL: HXU6	1 1/2	STEEL
E-110-00	3RD EFFECT 48" DIA. CALANDRIA	APV PARAFLOW	MODEL: HXU6	48"	STEEL
VL-110-00	3RD EFFECT SNAIL SHELL SEPARATOR	APV PARAFLOW	MODEL: HXU6	48"	STEEL
P-10-00	3RD EXTRACT/RIC PUMP	APV PARAFLOW	MODEL: HXU6	1 1/2	STEEL
E-110-00	3RD EFFECT 48" DIA. CALANDRIA	APV PARAFLOW	MODEL: HXU6	48"	STEEL
VL-110-00	3RD EFFECT SNAIL SHELL SEPARATOR	APV PARAFLOW	MODEL: HXU6	48"	STEEL
P-10-00	4TH EXTRACT/RIC PUMP	APV PARAFLOW	MODEL: HXU6	1 1/2	STEEL
E-110-00	4TH EFFECT 48" DIA. CALANDRIA	APV PARAFLOW	MODEL: HXU6	48"	STEEL
VL-110-00	4TH EFFECT SNAIL SHELL SEPARATOR	APV PARAFLOW	MODEL: HXU6	48"	STEEL
P-10-00	5TH EXTRACT/RIC PUMP	APV PARAFLOW	MODEL: HXU6	1 1/2	STEEL
E-110-00	5TH EFFECT 48" DIA. CALANDRIA	APV PARAFLOW	MODEL: HXU6	48"	STEEL
VL-110-00	5TH EFFECT SNAIL SHELL SEPARATOR	APV PARAFLOW	MODEL: HXU6	48"	STEEL
P-10-00	6TH EXTRACT/RIC PUMP	APV PARAFLOW	MODEL: HXU6	1 1/2	STEEL
E-110-00	6TH EFFECT 48" DIA. CALANDRIA	APV PARAFLOW	MODEL: HXU6	48"	STEEL
VL-110-00	6TH EFFECT SNAIL SHELL SEPARATOR	APV PARAFLOW	MODEL: HXU6	48"	STEEL

CODE	CONN. SIZE	DUTY	FLOW CODE	CONN. SIZE	DUTY	FLOW
(1)	1/2" ASA CS	STEAM 40 PSI, MIN (TC)	C	(1)	1/2" ERP	STEAM SUPPLY
(2)	1/2" ASA ERP	STEAM 40 PSI, MIN (TC)	CE	(2)	1" NPT F	STEAM 130 PSI, MIN. FEED
(3)	1/2" ASA ERP	CW SUPPLY	EE	(3)	1" NPT F	LP CONDENSATE
(4)	1/2" ASA ERP	STEAM 50 PSI, FINISHER	ED	(4)	1" NPT F	LP CONDENSATE
(5)	1/2" ASA TRIG	OVERFLOW, BALANCE TANK	(H)	(5)	1/2" NPT F	HP CONDENSATE
(6)	1/2" ASA TRIG	STEAM 50 PSI, FINISHER	(A)	(6)	1/2" NPT F	HP CONDENSATE
(7)	1/2" ASA TRIG	STEAM 50 PSI, FINISHER	(G)	(7)	1/2" NPT F	HP CONDENSATE
(8)	1/2" ASA TRIG	FEED	(H)	(8)	1/2" NPT F	HP CONDENSATE
(9)	1/2" ASA TRIG	PRODUCT	(A)	(9)	1/2" NPT F	HP CONDENSATE
(10)	1/2" ASA TRIG	PRODUCT	(A)	(10)	1/2" NPT F	HP CONDENSATE
(11)	1/2" ASA TRIG	PRODUCT	(A)	(11)	1/2" NPT F	HP CONDENSATE
(12)	1/2" ASA TRIG	PRODUCT	(A)	(12)	1/2" NPT F	HP CONDENSATE
(13)	1/2" ASA TRIG	PRODUCT	(A)	(13)	1/2" NPT F	HP CONDENSATE
(14)	1/2" ASA TRIG	PRODUCT	(A)	(14)	1/2" NPT F	HP CONDENSATE
(15)	1/2" ASA TRIG	PRODUCT	(A)	(15)	1/2" NPT F	HP CONDENSATE
(16)	1/2" ASA TRIG	PRODUCT	(A)	(16)	1/2" NPT F	HP CONDENSATE
(17)	1/2" ASA TRIG	PRODUCT	(A)	(17)	1/2" NPT F	HP CONDENSATE
(18)	1/2" ASA TRIG	PRODUCT	(A)	(18)	1/2" NPT F	HP CONDENSATE
(19)	1/2" ASA TRIG	PRODUCT	(A)	(19)	1/2" NPT F	HP CONDENSATE
(20)	1/2" ASA TRIG	PRODUCT	(A)	(20)	1/2" NPT F	HP CONDENSATE

PIPE MAT'L BY OTHERS IF APV B.M. NO. NOT SHOWN. APV P&ID FOR FIELD FABRICATION. ELECTION OF PIPES HAVE SAME NO. AS B.M. NO. EXCEPT W/DOC DUCKS, B.M. SIZES. DIM: PFS, 0000, 02. DIM: SW 30-01 SHOP HUB, FIELD FIT. PIPE STYLE: SW 30-01. P&ID ISSUE MAT'L TO FIELD - MEASURE & CUT IN FIELD.

NOTES:
 1. REVISION (P) NOTE ADDED: CONTROL WAS 24" DIA. (P) WERE WATER PURGED, REV. 37002.
 2. WIRE PIPE VENT.
 3. (P) FURNISHED BY APV STEERING UNIT 24751, RAVENH.
 4. APV TERMINAL POINTS REVISED.

APV COMPANY INC. TORAMANDA INDUSTRIAL PARK, TORAMANDA, N.Y. 14180

DATE: 2023
 DRAWN: [Name]
 CHECKED: [Name]
 REVISED: [Name]